



CHELSEA  
RIVERVIEW

SW6



SMC | PROPERTY

*Commercial Units*

# Welcome to Chelsea Riverview, situated on the banks of The River Thames.

## DEVELOPMENT

ADDRESS: 50 - 52  
William Morris Way,  
SW6

## LOCAL COUNCIL:

London Borough of  
Hammersmith and  
Fulham

## COMPLETION DATE:

- Anticipated completion  
Summer 2024

## BUILDING

INSURANCE:  
12 year warranty

## AVAILABILITY:

Available for sale  
or lease

## Key Information

### USE CLASS

- E

### TENURE:

999 years lease

### BREEM RATING

- Excellent

### EPC RATING

- A

### SERVICE CHARGE

- £2.20 per sq. f (approx)

- Service Charge covers buildings insurance, fire systems, health & safety, security and reserves

### UNIT SIZE

- Unit 1: 468.2 sq. m,  
- Unit 2: 535.64 sq. m

### CEILING HEIGHT

- 3075mm

### BUILDING ACCESS

- Unit 1: Two private entrances,  
- Unit 2: Three private entrances

### FACILITIES

- Shell and core  
- Capped services provided for electricity, heating, cooling (via ASHPs), cold water services, draining and telecoms  
- Dedicated bin store  
- 22 secure cycle spaces, external access





Wandsworth Bridge Road

Stamford Bridge

King's Road

Kensington Gardens

Royal Albert Hall

Imperial College London

Natural History Museum

Hyde Park

The Regent's Park

Imperial Park

Albert Bridge

Sloane Square

Battersea Park

London Eye



*Moments from the river  
and green space with excellent  
connectivity to London and beyond.*

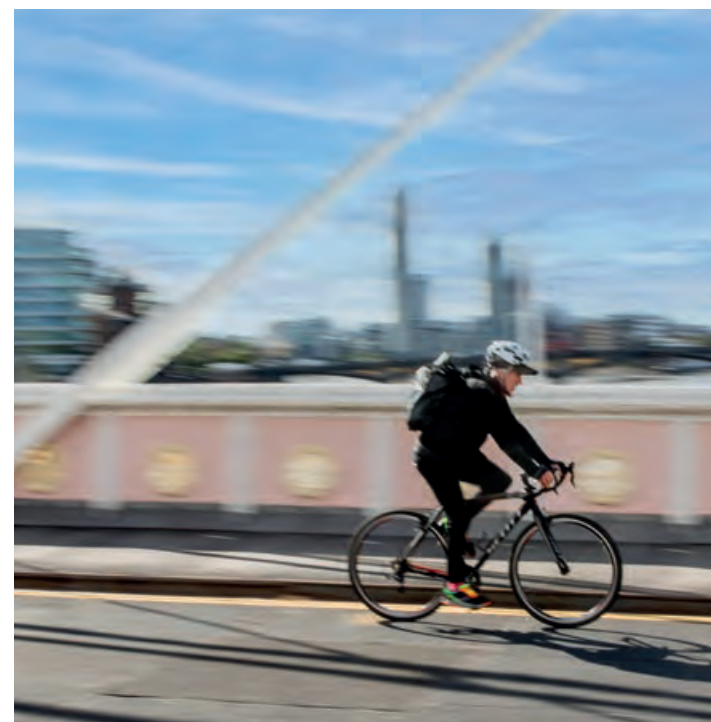


Local Area

*Within a few minutes walk from Chelsea Riverview, there are plenty of places to enjoy lunch and take in the surrounding area.*

- 1 Sainsbury's superstore 6 mins walk
- 2 Tesco Express, 7 mins walk
- 3 Sainsbury's Local, 7 mins
- 4 Imperial Wharf Food Market, 5mins walk
- 5 Imperial Park, 2 mins walk

# Only a 35 minute drive from Chelsea Riverview to Heathrow airport



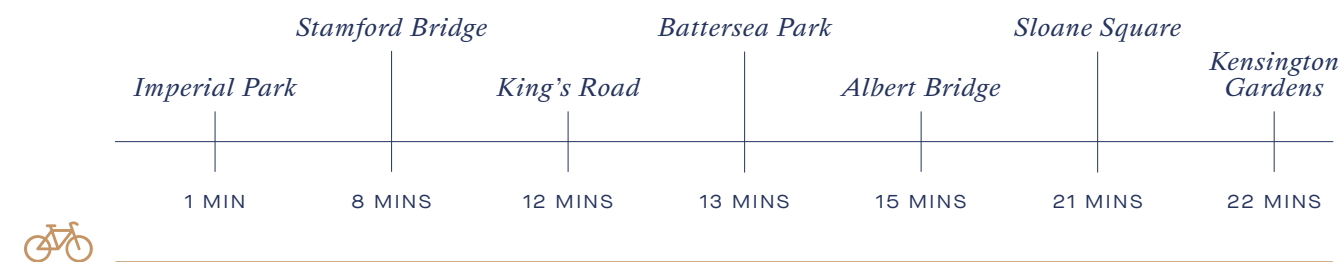
## GETTING AROUND

A short walk from Imperial Wharf Station, Chelsea Riverview is well connected by tube, train or car to get you across London and beyond.

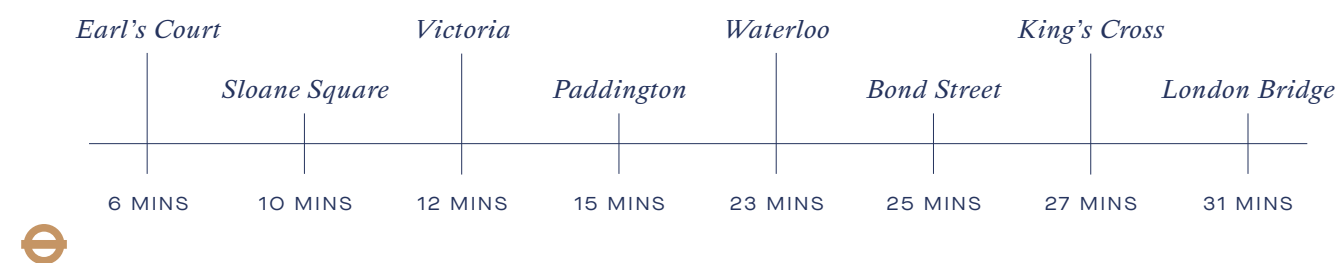
Travel by Uber Boat by Thames Clipper. Services run from Chelsea Harbour landing to Putney, the West End and City & Docklands.



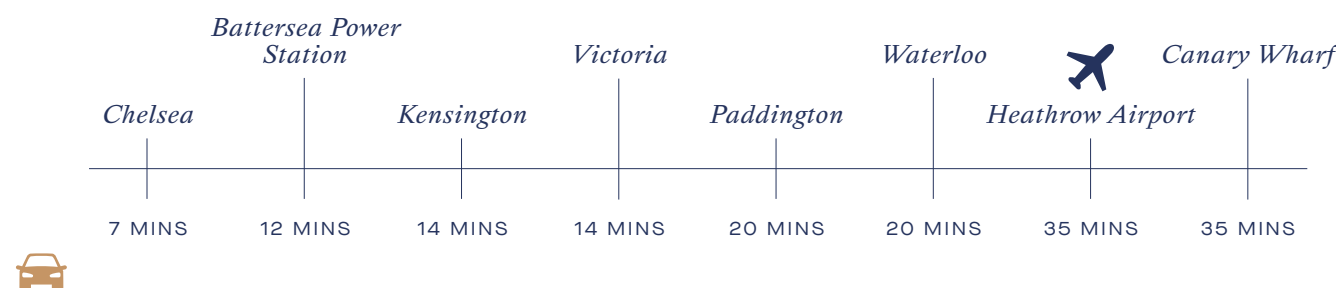
### WALK FROM CHELSEA RIVERVIEW



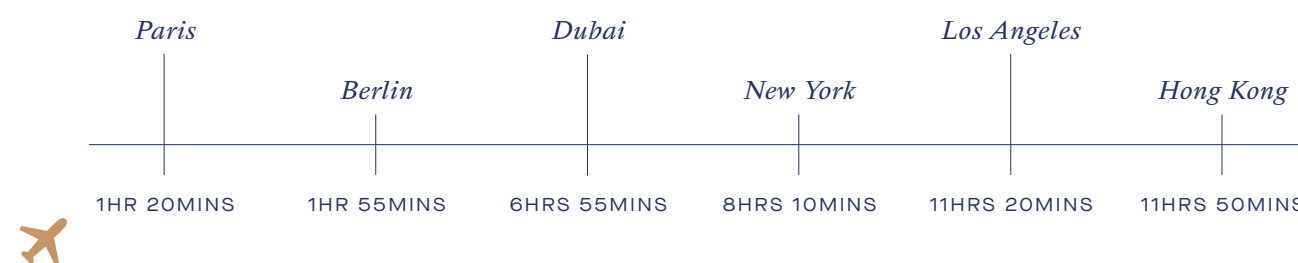
### CYCLE FROM CHELSEA RIVERVIEW



### UNDERGROUND FROM FULHAM BROADWAY STATION

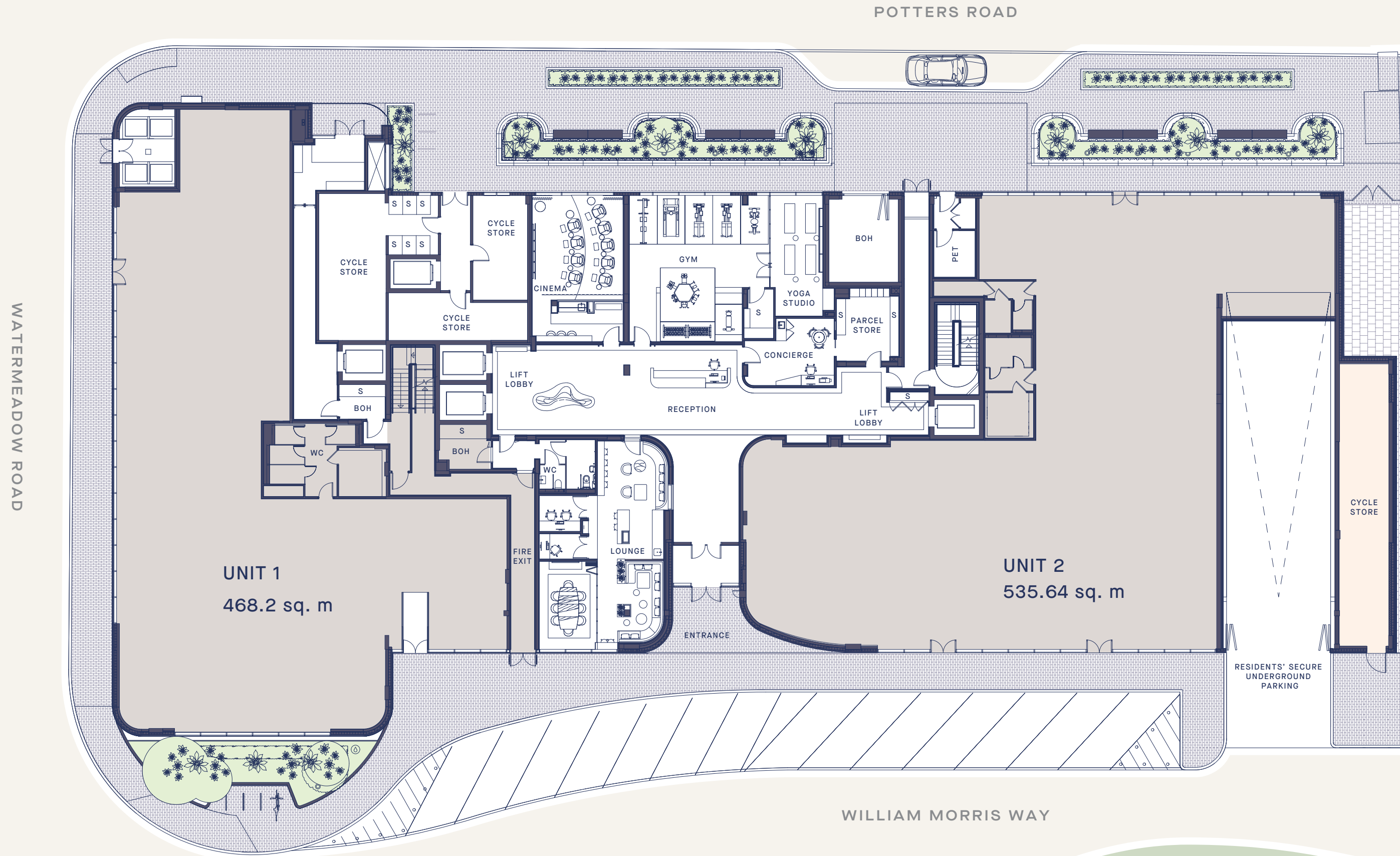


### DRIVE FROM CHELSEA RIVERVIEW



### FLY FROM HEATHROW AIRPORT

RIVERSIDE LOCATION.  
CHELSEA NEIGHBOURHOOD.





*CGIs are indicative only*

## Unit 1 External

*468.2 sq. m/ 5,042 sq. ft*

*Units are provided in shell and core condition.  
They have their own private entrance with  
floor to ceiling glass frontage.*



*CGIs are indicative only*

Unit 1 Internal



*CGIs are indicative only*

## Unit 2 External

*535.64sq. m/ 5,766 sq. ft*

*Units are provided in shell and core condition.  
They have their own private entrance with  
floor to ceiling glass frontage.*



*CGIs are indicative only*

## Unit 2 Internal



## *Get in touch*

Mark Belsham at Eddisons on: 07973 372698 [mark.belsham@eddisons.com](mailto:mark.belsham@eddisons.com)

Or

Darren Best at Savoy Stewart on: 07932 714992 [DB@savoystewart.co.uk](mailto:DB@savoystewart.co.uk)

