

FOR SUBLEASE

±3,600 SF of Industrial Flex Space

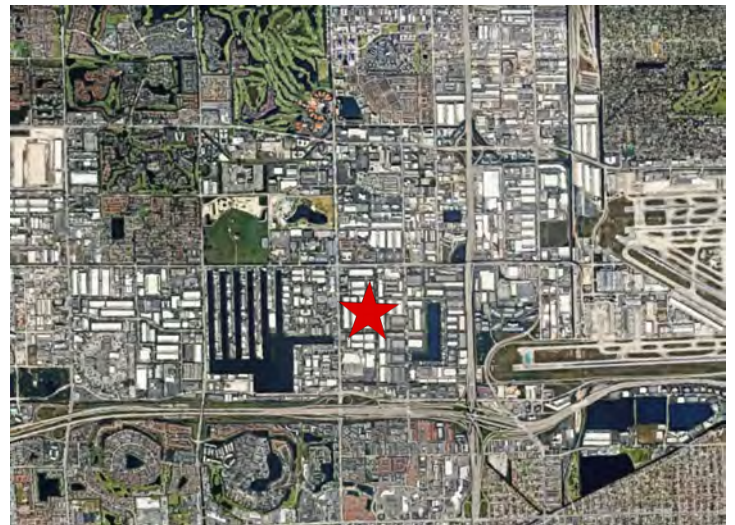
1904 NW 84th Avenue

Doral, FL 33126



PROPERTY HIGHLIGHTS:

- ±3,600 SF Available
- ±500 SF Climate Controlled Warehouse
- 15' Clear Ceiling Height
- One (1) Drive-In Door
- Parking Ratio: 3.92:1,000 SF
- Wet Sprinkler System
- Masonry Construction
- Sublease Term Thru: 7/31/2028
- Pricing: \$20.80/SF NNN



For Leasing Information contact:

Michael Foxwell, Jr.

(305) 495-6685

mfoxwell@theeastongroup.com

Andrew Easton

(305) 812-2646

aeston@theeastongroup.com



Easton & Associates

www.TheEastonGroup.com

10165 NW 19th Street, Doral, FL 33172

PROPERTY PHOTOS

1904 NW 84th Avenue

Doral, FL 33126



For Leasing Information contact:

Michael Foxwell, Jr.

(305) 495-6685

mfoxwell@theeastongroup.com

Andrew Easton

(305) 812-2646

aeston@theeastongroup.com



Easton & Associates

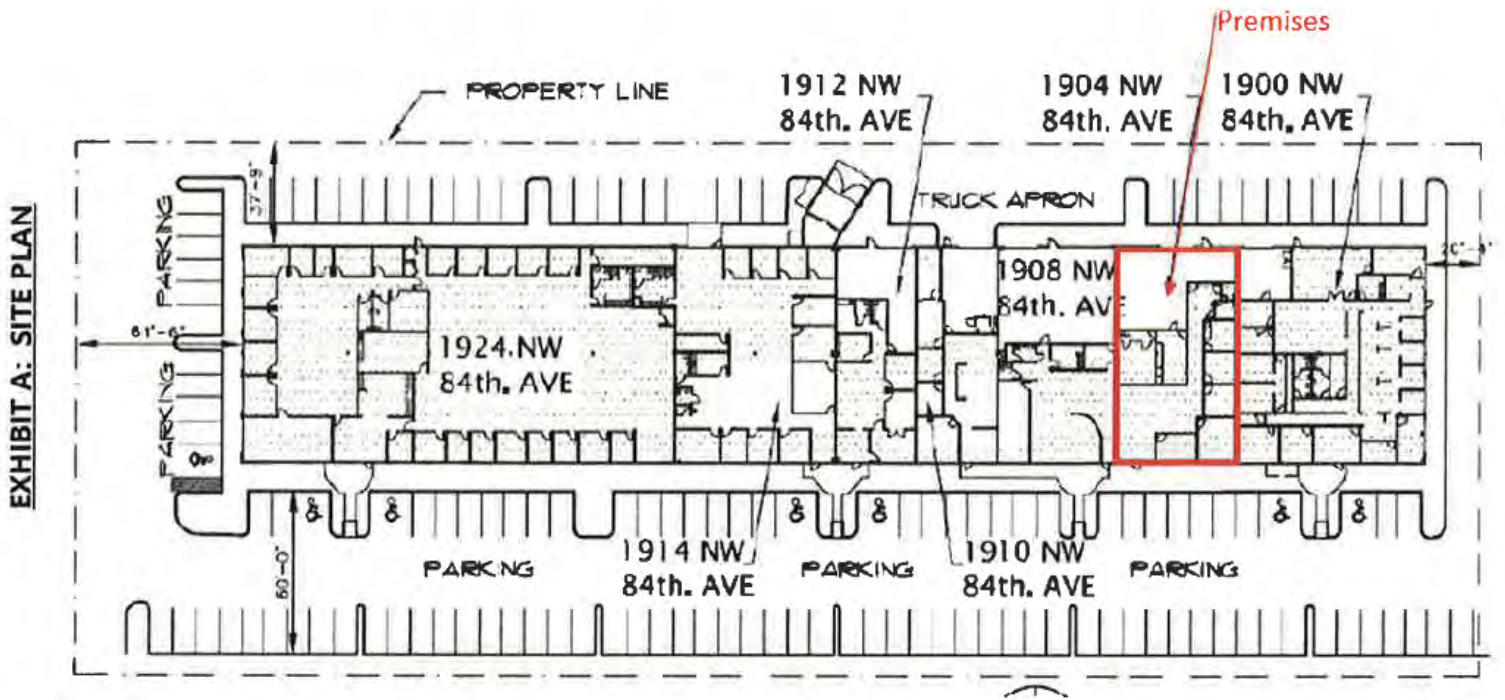
www.TheEastonGroup.com

10165 NW 19th Street, Doral, FL 33172

FLOOR PLAN

1904 NW 84th Avenue

Doral, FL 33126



For Leasing Information contact:

Michael Foxwell, Jr.

(305) 495-6685

mfoxwell@theeastongroup.com

Andrew Easton

(305) 812-2646

aeston@theeastongroup.com



Easton & Associates

www.TheEastonGroup.com

10165 NW 19th Street, Doral, FL 33172