

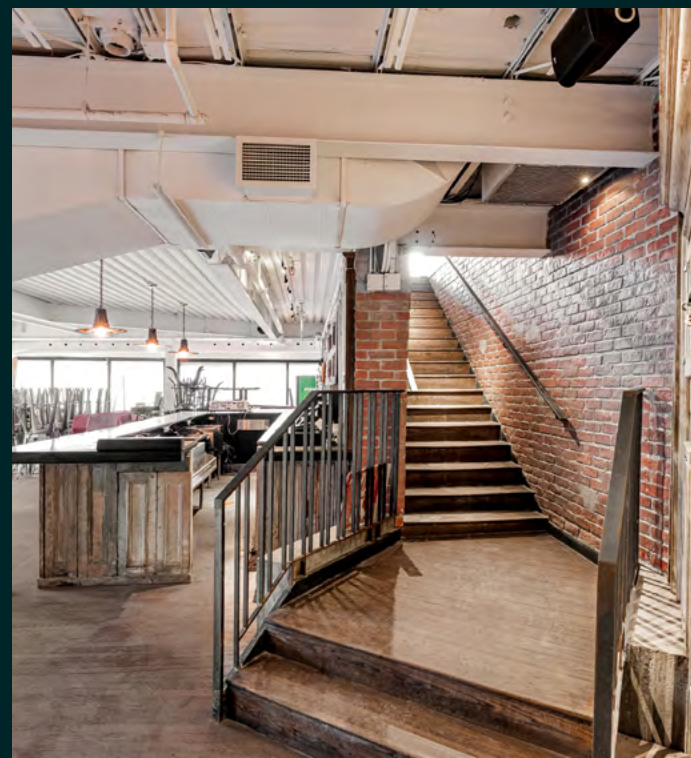


Restaurant Space | For Lease

1471 CRESCENT STREET, MONTRÉAL (QC)

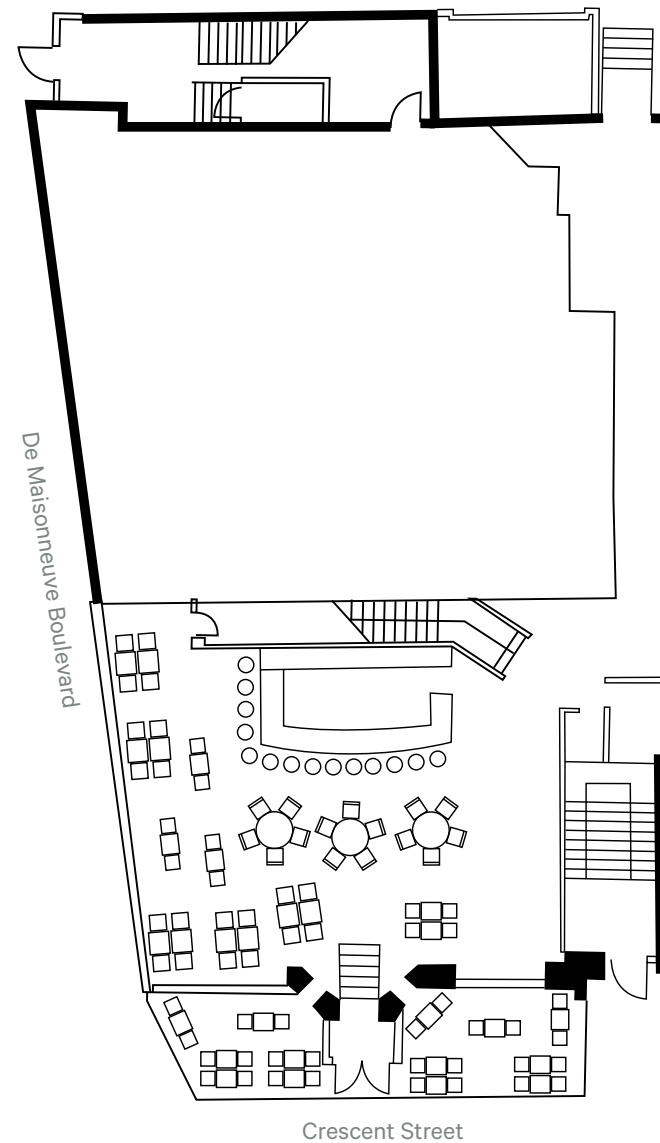
Lease Terms

- + **Term**
5 - 10 years
- + **Net Rent**
\$36.00 per sq. ft.
- + **Additional Rent**
\$16.13 per sq. ft.
- + **Total Area**
8,343 sq. ft.
- + **Hydro**
Metered
- + **Availability**
Immediate

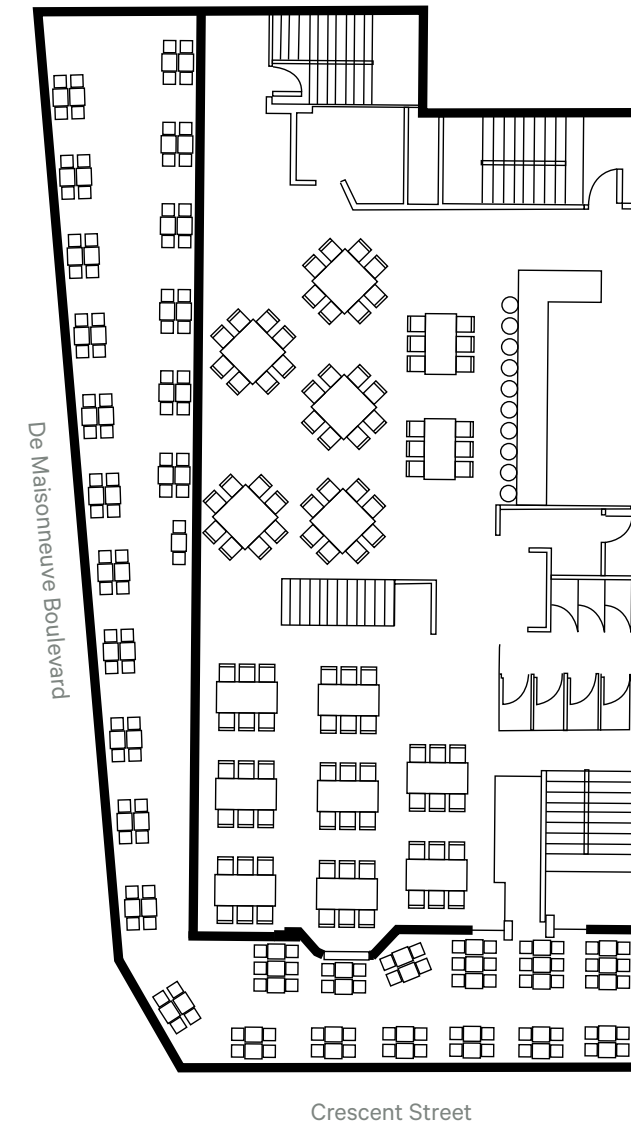


Floor Plans

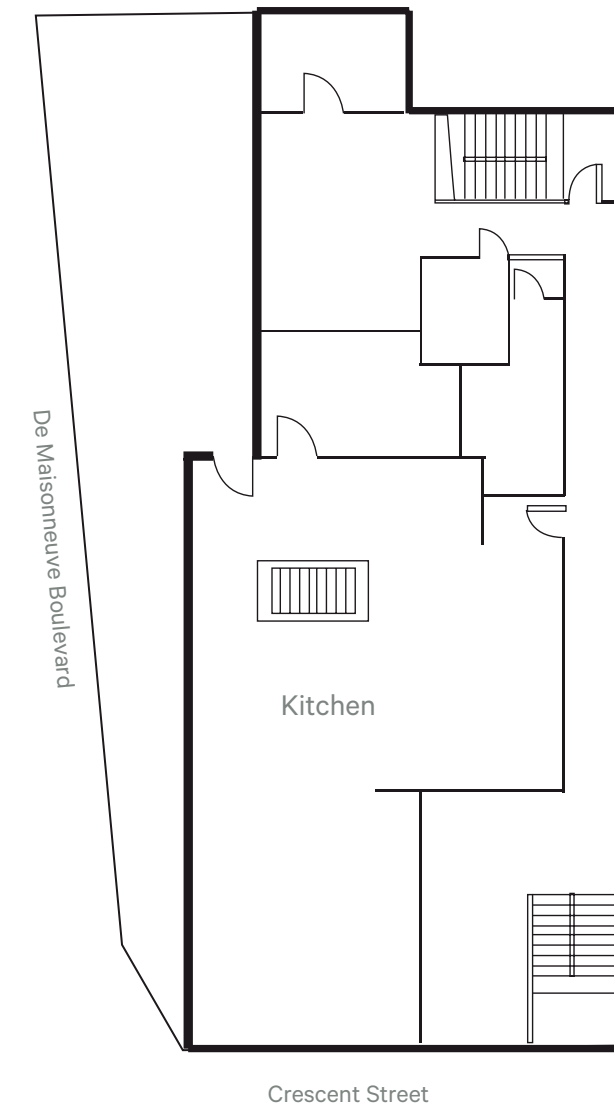
Ground Floor: 2,000 sq. ft.



2nd floor: 4,000 sq. ft.

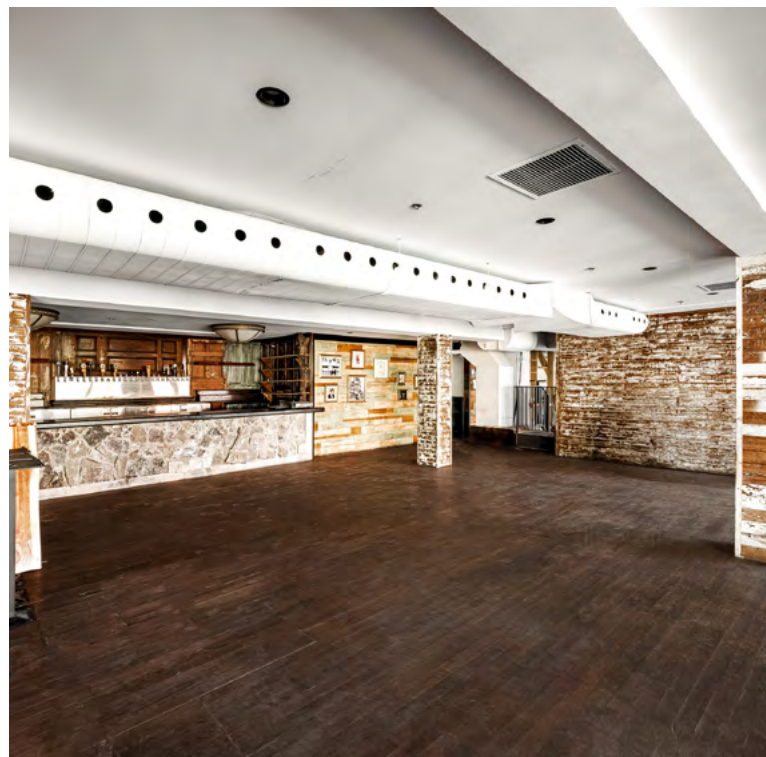


3rd floor: 2,343 sq. ft.



Property Details

- + Located on Crescent Street between De Maisonneuve Blvd. West and Sainte-Catherine Street West
- + In proximity of the Lucien-L'Allier, Guy-Concordia and Peel metro stations
- + Terrace available
- + Building signage opportunity
- + Neighbouring tenants include Burger Bar, Winnie's Bar, Mandy's and many more



Contact Us

Christopher Rundle
 Vice President
 Real Estate Broker
 +1 514 375 0818
 christopher.rundle@cbre.com

Bryan Greenberg
 Associate Vice President
 Commercial Real Estate Broker
 +1 514 375 2507
 bryan.greenberg@cbre.com

Amanda Angela Herbu
 Associate
 Commercial Real Estate Broker
 +1 514 375 0456
 amanda.herbu@cbre.com

CBRE Limited, Real Estate Agency | 1250
 René-Lévesque Blvd West, Suite 2800 |
 Montréal, Québec H3B 4W8 | +1 514 849
 6000 | www.cbre.ca

This disclaimer shall apply to CBRE Limited, Real Estate Agency, and to all other divisions of the Corporation, to include all employees and independent contractors ("CBRE"). The information set out herein, including, without limitation, any projections, images, opinions, assumptions and estimates obtained from third parties (the "Information") has not been verified by CBRE, and CBRE does not represent, warrant or guarantee the accuracy, correctness and completeness of the Information. CBRE does not accept or assume any responsibility or liability, direct or consequential, for the Information or the recipient's reliance upon the Information. The recipient of the Information should take such steps as the recipient may deem necessary to verify the Information prior to placing any reliance upon the Information. The Information may change and any property described in the Information may be withdrawn from the market at any time without notice or obligation to the recipient from CBRE. CBRE and the CBRE logo are the service marks of CBRE Limited and/or its affiliated or related companies in other countries. All other marks displayed on this document are the property of their respective owners. All Rights Reserved. Mapping Sources: Canadian Mapping Services canadamapping@cbre.com; DMTI Spatial, Environics Analytics, Microsoft Bing, Google Earth.

