

FOR LEASE
90 MINT
SOMA
HISTORIC LANDMARK BUILDING



FOR LEASE

90 MINT

SOMA

PROPERTY HIGHLIGHTS

GROUND FLOOR RETAIL +/- 1,723 RSF
MEZZANINE +/- 461 RSF
BASEMENT



Ground Floor Retail + Mezzanine and
Basement
18' Ceilings
Marble Floors
Operable Windows
Full Basement Storage
Vault Area

FOR LEASE

90 MINT

SOMA

PROPERTY PHOTOS

GROUND FLOOR RETAIL +/- 1,723 RSF
MEZZANINE +/- 461 RSF
BASEMENT



All material presented herein is intended for informational purposes only. Information is compiled from sources deemed reliable but is subject to errors, omissions, changes in price, condition, sale, or withdraw without notice. No statement is made as to accuracy of any description. All measurements and square footages are approximate. Exact dimensions can be obtained by retaining the services of an architect or engineer. This is not intended to solicit property already listed.

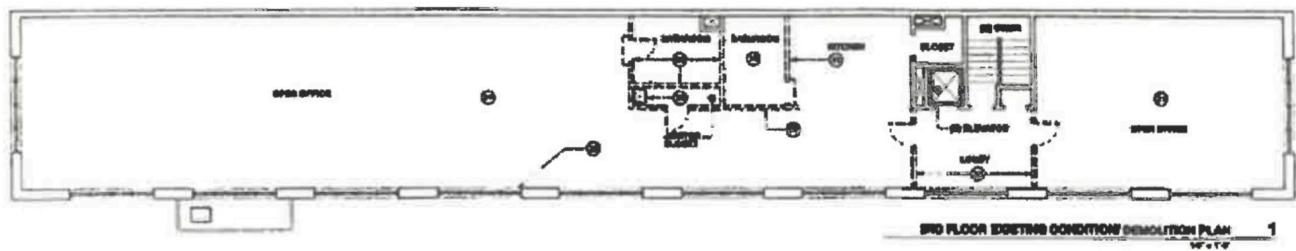
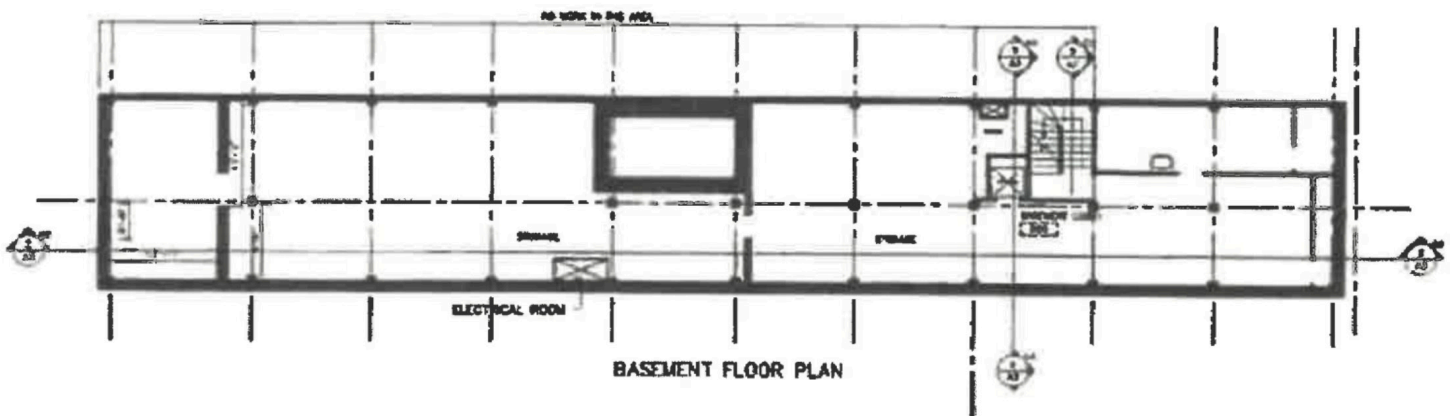
FOR LEASE

FLOOR PLAN

90 MINT

SOMA

GROUND FLOOR RETAIL +/- 1,723 RSF
MEZZANINE +/- 461 RSF
BASEMENT



FOR LEASE

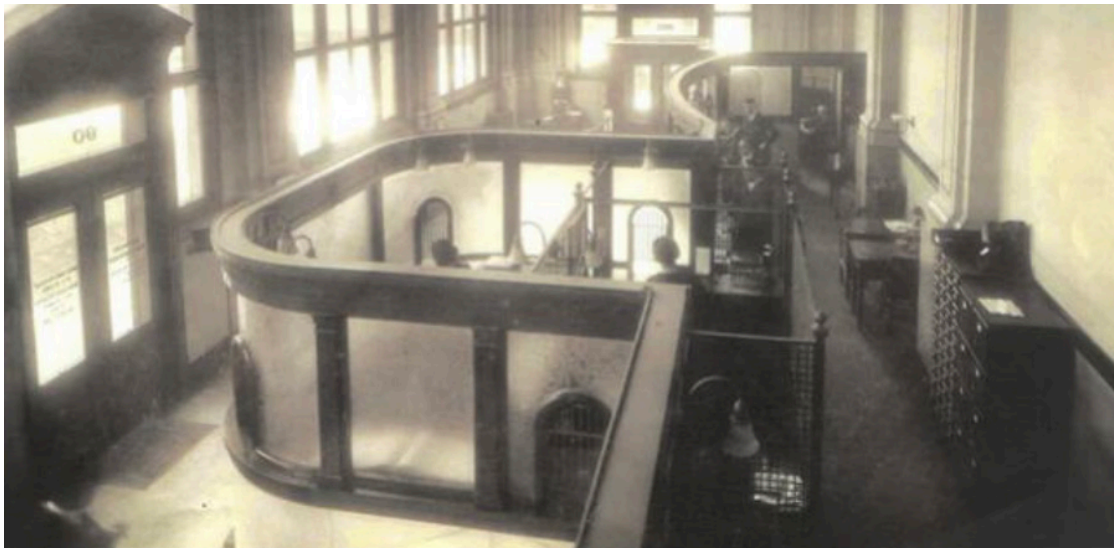
BUILDING HISTORY

90 MINT

SOMA

HISTORIC LANDMARK BUILDING

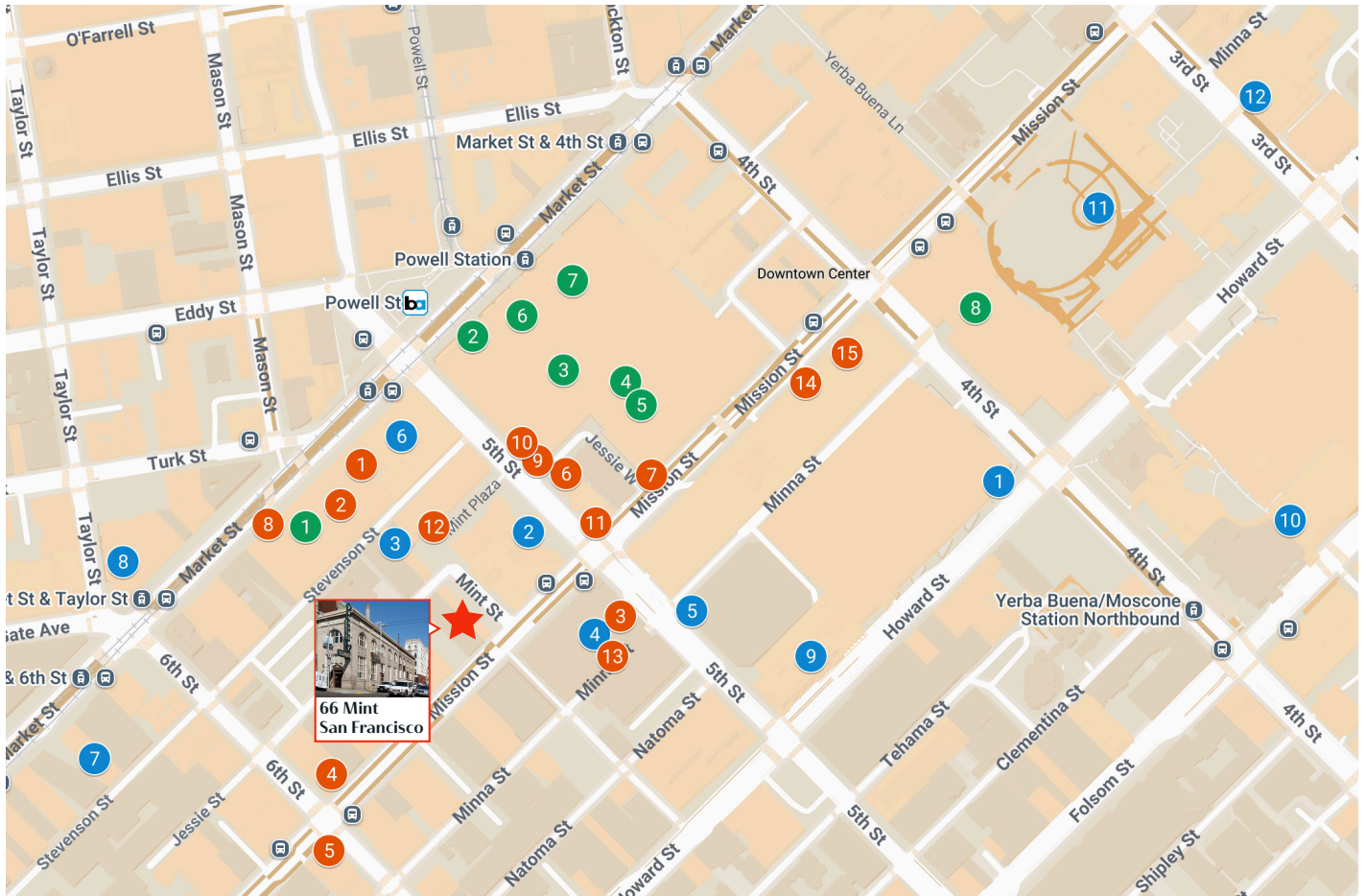
Stretching from 66 Mint to 923 Mission Street has been home of San Francisco Provident since 1914. The historical landmark building and business was founded by such storied San Francisco civic leading families as the Fleishaker's, the Hellman's and the Crocker's, just to name a few. The building sold in 1951 and has been owned and operated by the same family for 4 generations.



All material presented herein is intended for informational purposes only. Information is compiled from sources deemed reliable but is subject to errors, omissions, changes in price, condition, sale, or withdraw without notice. No statement is made as to accuracy of any description. All measurements and square footages are approximate. Exact dimensions can be obtained by retaining the services of an architect or engineer. This is not intended to solicit property already listed.

90 MINT

SOMA



NEARBY:

- 1 Moscone West
- 2 The San Francisco Mint
- 3 Minerva University
- 4 San Francisco Chronicle
- 5 University of Pacific (UOP), San Francisco
- 6 Federal Trade Commission
- 7 International Art Museum of America
- 8 The Warfield
- 9 InterContinental San Francisco
- 10 Yerba Buena Ice Skating & Bowling Center
- 11 Yerba Buena Gardens
- 12 San Francisco Museum of Modern Art

RESTAURANTS & CAFES:

- 1 The Melt
- 2 Casa Borinqueña
- 3 Java Trading Co.
- 4 The Bite
- 5 Miss Saigon
- 6 Zevi Cafe & Bistro
- 7 Executive Order Bar & Lounge
- 8 Snöberg
- 9 The Cavalier
- 10 S&R Lounge
- 11 Soma Restaurant & Bar
- 12 Burma Love
- 13 Off the Grid: 5th & Minna
- 14 Mariposas
- 15 Mel's Drive-In

SHOPPINGS:

- 1 IKEA
- 2 Ray-Ban
- 3 Foot Locker
- 4 H&M
- 5 BOSS Shop - Macy's Shop
- 6 Union Square San Francisco Centre
- 7 Jo Malone London at Bloomingdale's
- 8 Metreon



All material presented herein is intended for informational purposes only. Information is compiled from sources deemed reliable but is subject to errors, omissions, changes in price, condition, sale, or withdraw without notice. No statement is made as to accuracy of any description. All measurements and square footages are approximate. Exact dimensions can be obtained by retaining the services of an architect or engineer. This is not intended to solicit property already listed.

S. F. PROVIDENT LOAN ASSN.

FOR LEASE
90 MINT
SOMA
HISTORIC LANDMARK BUILDING

PLEASE CONTACT EXCLUSIVE BROKERS:

Bradley L. Colton

(415) 834-1600

bcolton@coltoncommercialsf.com

License #: 00805116

Bryan B. Colton

(415) 595-6959

bryancolton@coltoncommercialsf.com

License #: 02111407

Casaldra Andreassen

(631)-478-8343

casaldra@coltoncommercialsf.com

License #: 02028086

Exclusively Represented By:



San Francisco, CA 94103
(415) 834-1600