

8500 EXECUTIVE PARK AVENUE

Fairfax, VA 22031

Office For Lease

1,990 - 2,691 SF



Leasing Information:
703.522.4600

Eamon McCrann **Jack Redmond**
703.284.5861 703.284.5880
emccrann@lpc.com jredmond@lpc.com

Lincoln

1530 Wilson Boulevard
Suite 200
Arlington, VA 22209

www.lpc.com

8500 EXECUTIVE PARK AVENUE

Fairfax, VA 22031

Office For Lease

1,990 - 2,691 SF

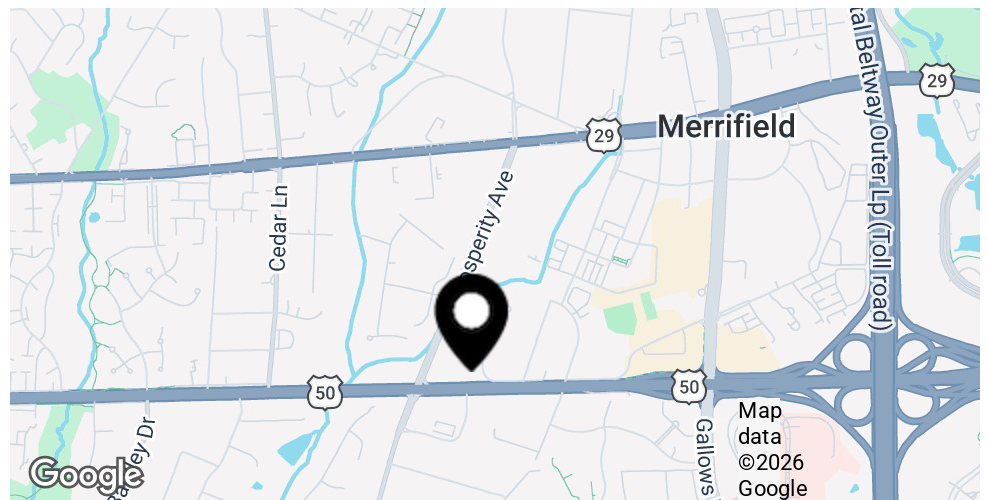


Property Highlights

- Newly renovated building lobby, common area floor finishes, and restrooms
- No operating expense pass throughs
- Extended building hours, ideal for medical tenants
- Parking ratio of 3.6/1,000 SF
- Close proximity to multiple amenities including the Mosaic District, I-66, I-495, Rt.50, and the Dunn Loring Metro Station

Availabilities

Availabilities	SF	Lease Rate	Date Available
Suite 202	2,691 SF	Negotiable	Immediately
Suite 210	1,990 SF	Negotiable	Immediately
Suite 312	2,530 SF	Negotiable	Immediately
Suite 400	2,296 SF	Negotiable	Immediately
Suite 404	2,620 SF	Negotiable	Immediately



Eamon McCrann **Jack Redmond**
703.284.5861 703.284.5880
emccrann@lpc.com jredmond@lpc.com

Lincoln

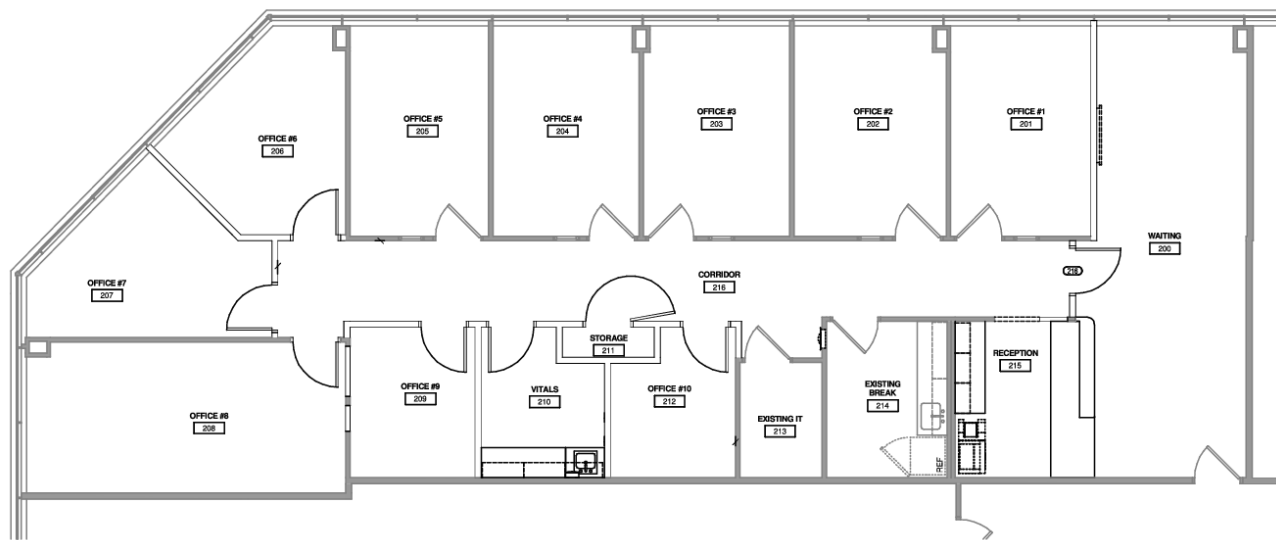
8500 EXECUTIVE PARK AVENUE

Fairfax, VA 22031

Suite 202

2,691 SF

Prosperity Avenue



Suite

Suite 202

Size

2,691 SF

Description

Available immediately

Eamon McCrann Jack Redmond

703.284.5861

703.284.5880

emccrann@lpc.com

jredmond@lpc.com

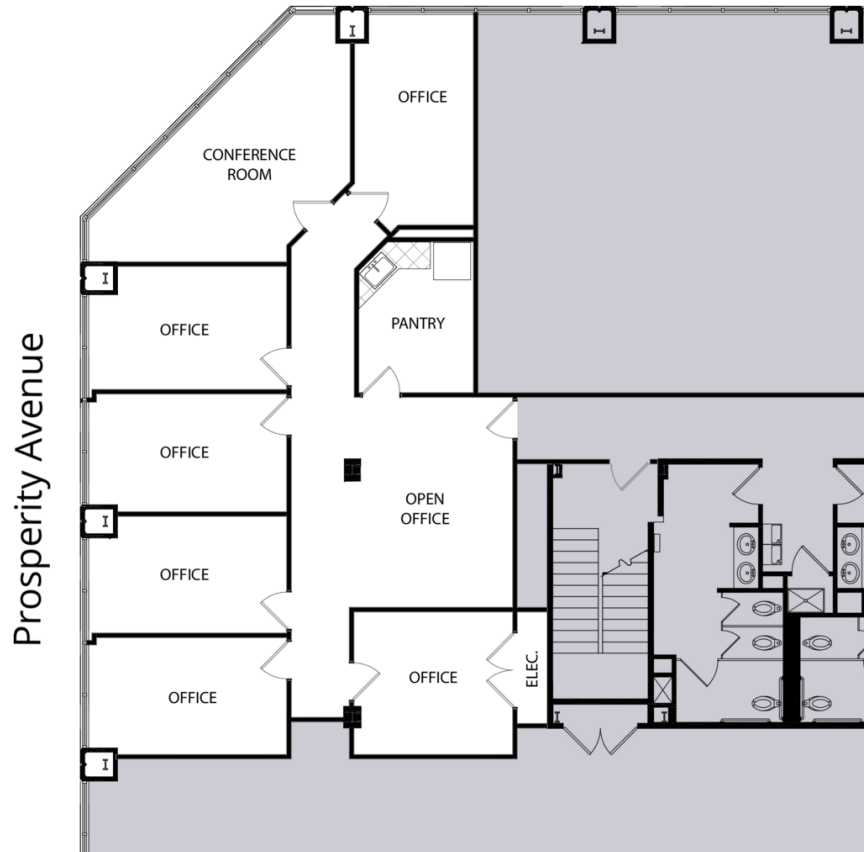
Lincoln

8500 EXECUTIVE PARK AVENUE

Fairfax, VA 22031

Suite 210

1,990 SF



Suite	Size	Description
Suite 210	1,990 SF	Available immediately

Eamon McCrann **Jack Redmond**
703.284.5861 703.284.5880
emccrann@lpc.com jredmond@lpc.com

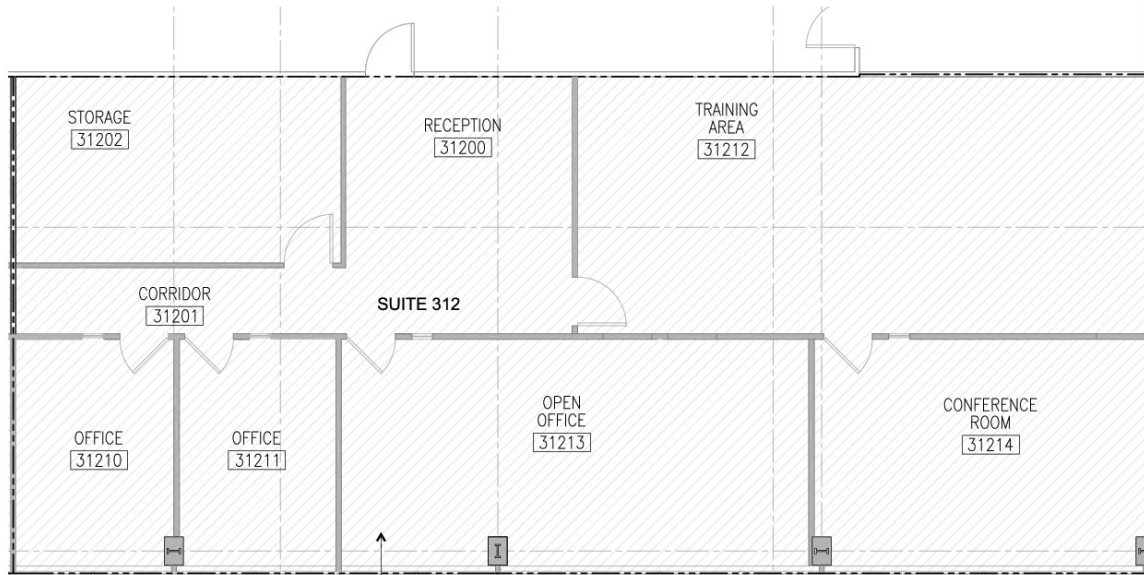
Lincoln

8500 EXECUTIVE PARK AVENUE

Fairfax, VA 22031

Suite 312

2,530 SF



Executive Park Avenue



Suite	Size	Description
■ Suite 312	2,530 SF	Available immediately

Eamon McCrann **Jack Redmond**
703.284.5861 703.284.5880
emccrann@lpc.com jredmond@lpc.com

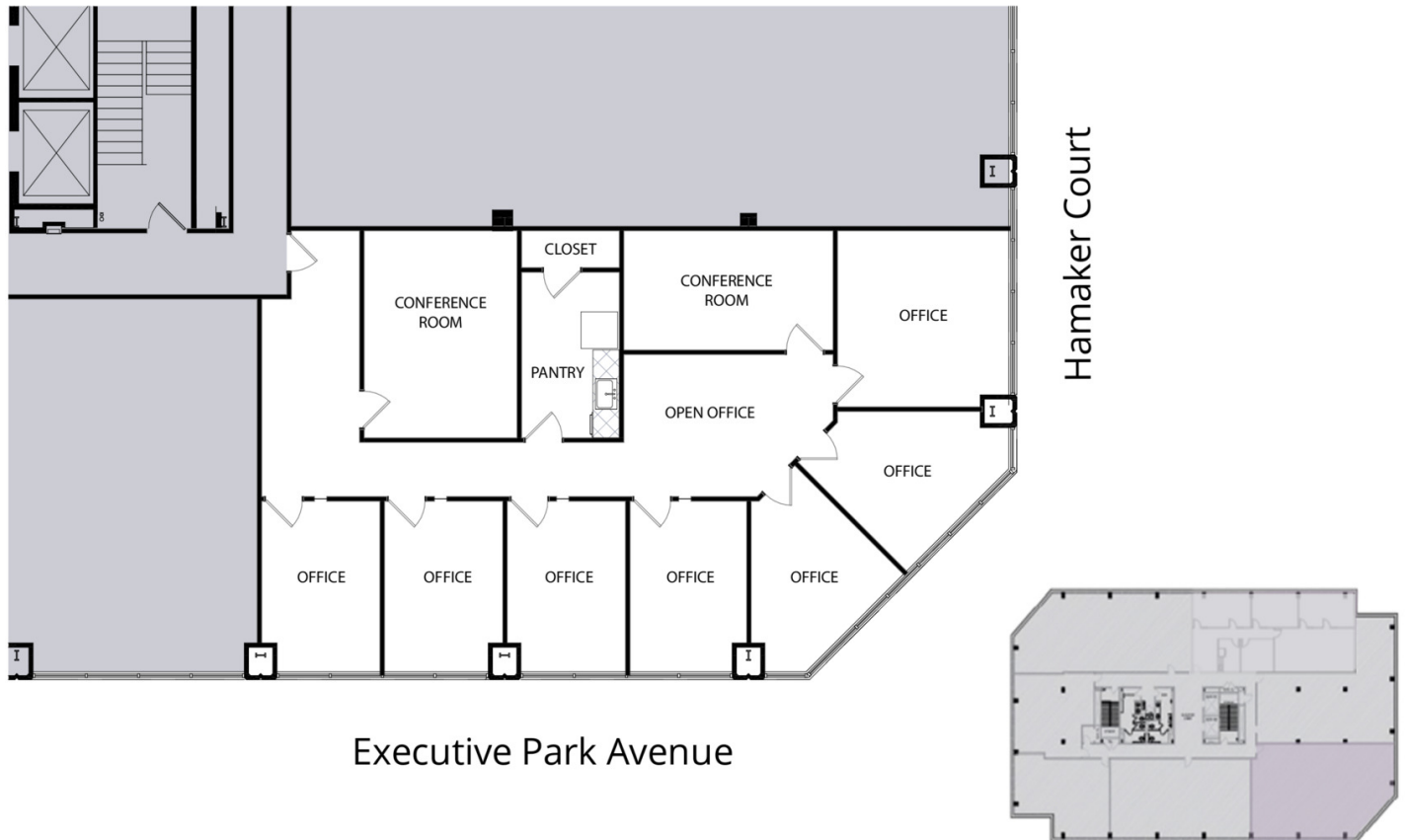
Lincoln

8500 EXECUTIVE PARK AVENUE

Fairfax, VA 22031

Suite 400

2,296 SF



Suite	Size	Description
Suite 400	2,296 SF	Available immediately

Eamon McCrann **Jack Redmond**
703.284.5861 703.284.5880
emccrann@lpc.com jredmond@lpc.com

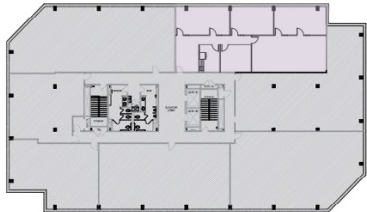
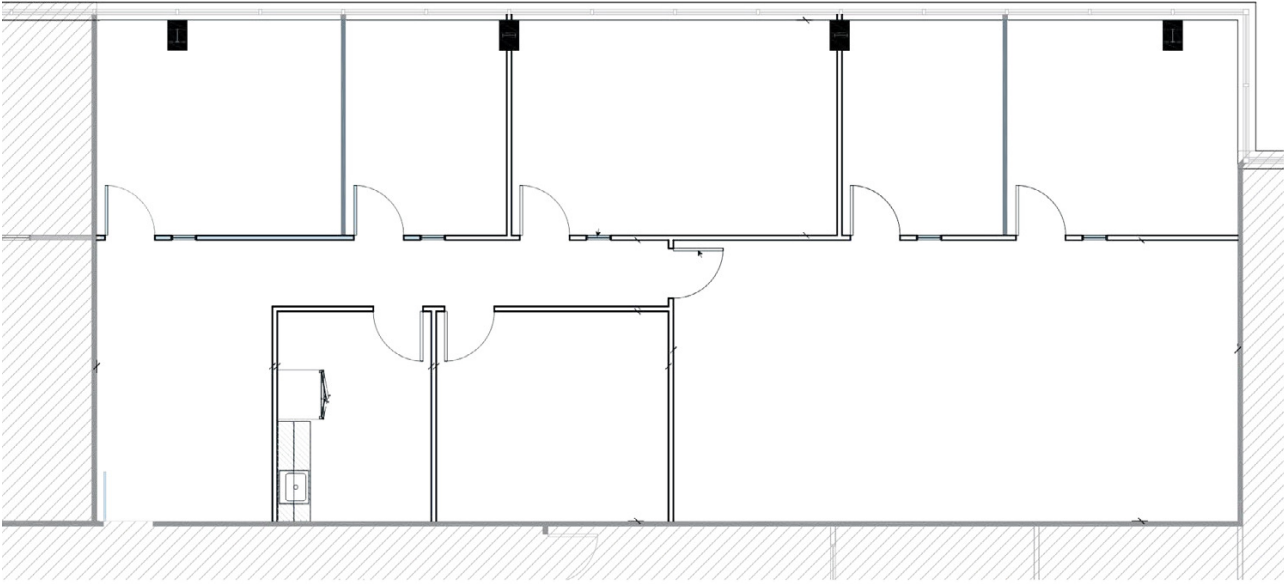
Lincoln

8500 EXECUTIVE PARK AVENUE

Fairfax, VA 22031

Suite 404

2,620 SF



Suite	Size	Description
■ Suite 404	2,620 SF	Available immediately.

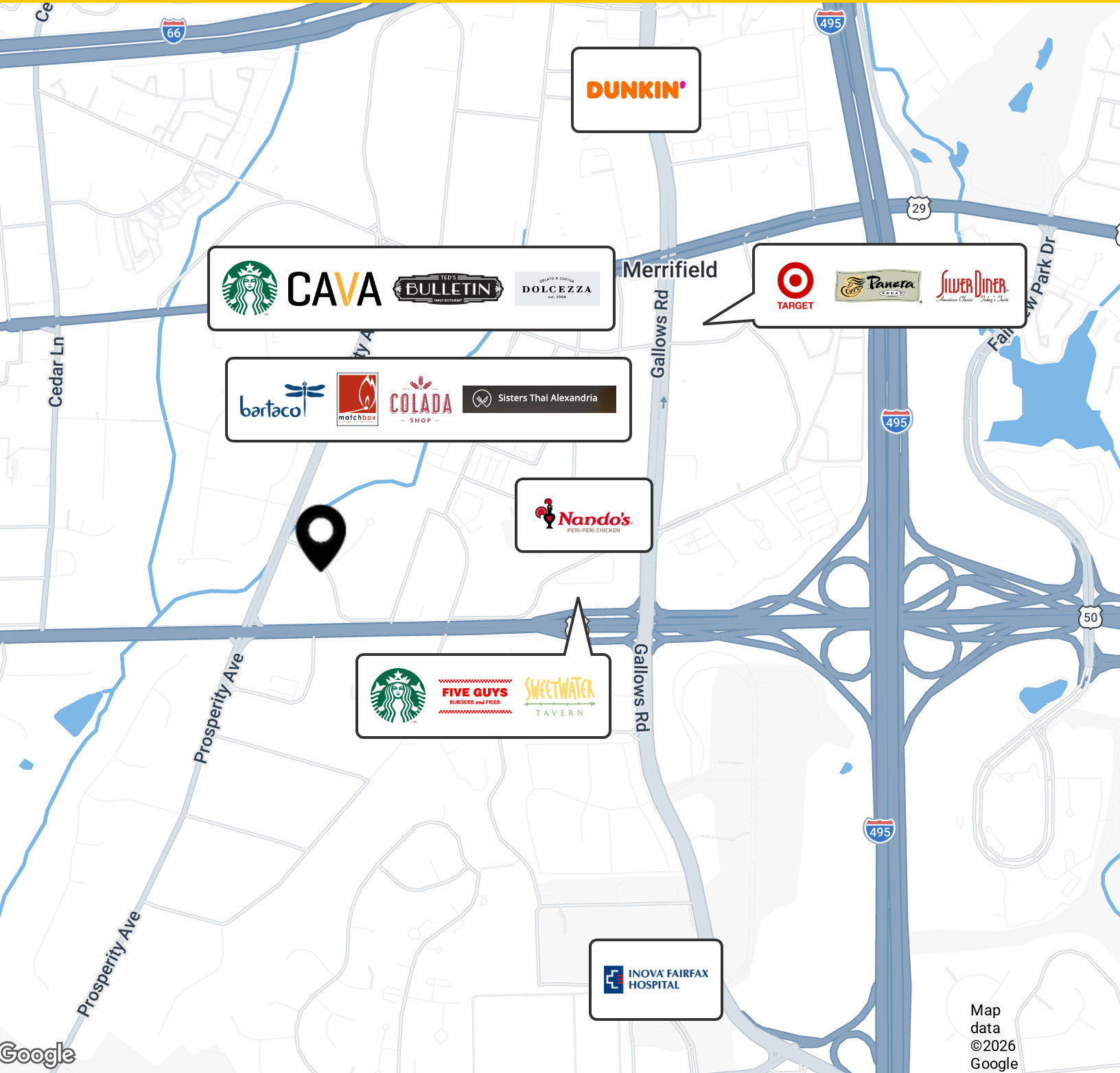
Eamon McCrann **Jack Redmond**
703.284.5861 703.284.5880
emccrann@lpc.com jredmond@lpc.com

Lincoln

8500 EXECUTIVE PARK AVENUE

Fairfax, VA

Fairfax, VA 22031



Eamon McCrann

Jack Redmond

703.284.5861

703.284.5880

emccrann@lpc.com

jredmond@lpc.com

Lincoln



8500 EXECUTIVE PARK AVENUE

Fairfax, VA 22031

Leasing Information:
703.522.4600

Eamon McCrann
703.284.5861
emccrann@lpc.com

Jack Redmond
703.284.5880
jredmond@lpc.com

Lincoln

1530 Wilson Boulevard
Suite 200
Arlington, VA 22209

www.lpc.com