

**CONTRACTOR STORAGE YARD**

**AVAILABLE FOR LEASE**  
1829 E. ELM ST, ONTARIO CA 91761

Yanetech

Image © 2025 Airbus

---

## OFFERING SUMMARY

---

ADDRESS	1829 E. Elm St Ontario CA 91761
LEASE RATE	\$6,500/Month
PRICE PSF	\$0.28
LAND SF	23,305 SF
LAND ACRES	0.535
ZONING TYPE	General Industrial (IG)
# OF PARCELS	1

---

## Property Description

- General Industrial (IG) property in the City of Ontario, CA, ideally located near Ontario International Airport with easy access to the 60 Freeway and I-10.

The site includes a 3-bedroom, 2-bathroom home suitable for residential or office use, plus an additional ±400 SF structure that can be repurposed or removed. The rear features a covered storage area on a concrete pad, previously used as dog kennels, ideal for equipment or vehicle storage.

The property is fully serviced with utilities and operates on a 1,000-gallon septic system. Sewer is available approximately 330 feet east on Vineyard Avenue. Fire hydrant located at the southeast corner.

- Ideal uses include contractor yards (HVAC, landscaping, plumbing, and similar trades), building material storage, tow yard operations, equipment storage, and other industrial outdoor storage uses. For a complete list of permitted uses, please refer to the City of Ontario Municipal Code for the General Industrial (IG) zone.

Please note that the property's previously recognized use was as a dog kennel. Any change in use may require a Conditional Use Permit (CUP) and/or Site Plan Review, subject to City approval. Owner will be leasing the property as-is.

---

## PROPERTY FEATURES

---

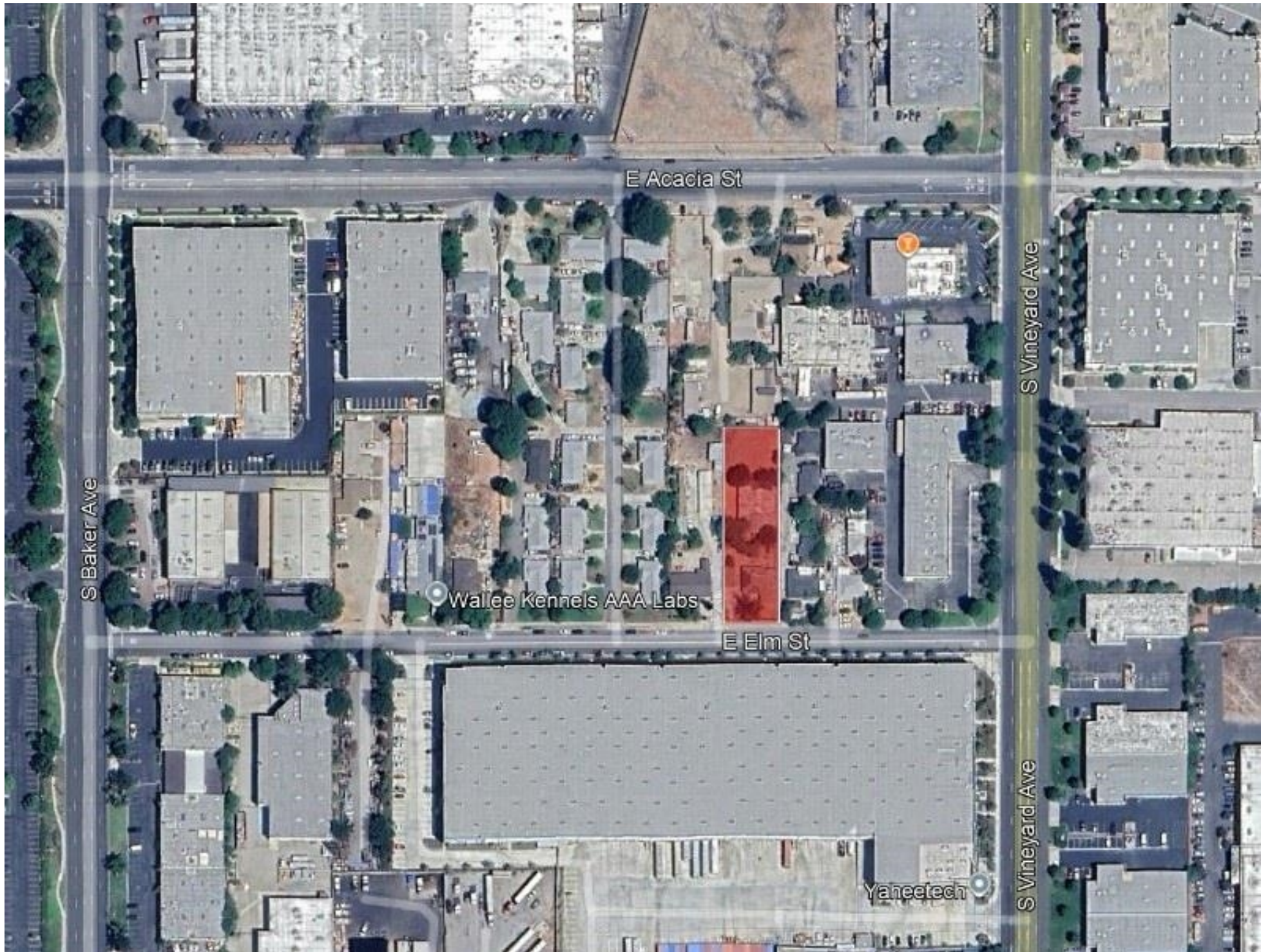
LAND SF	23,305
LAND ACRES	0.535
# OF PARCELS	1
ZONING TYPE	General Industrial (IG)
TOPOGRAPHY	Level
LOT DIMENSION	275' (L) x 79' (W)

---

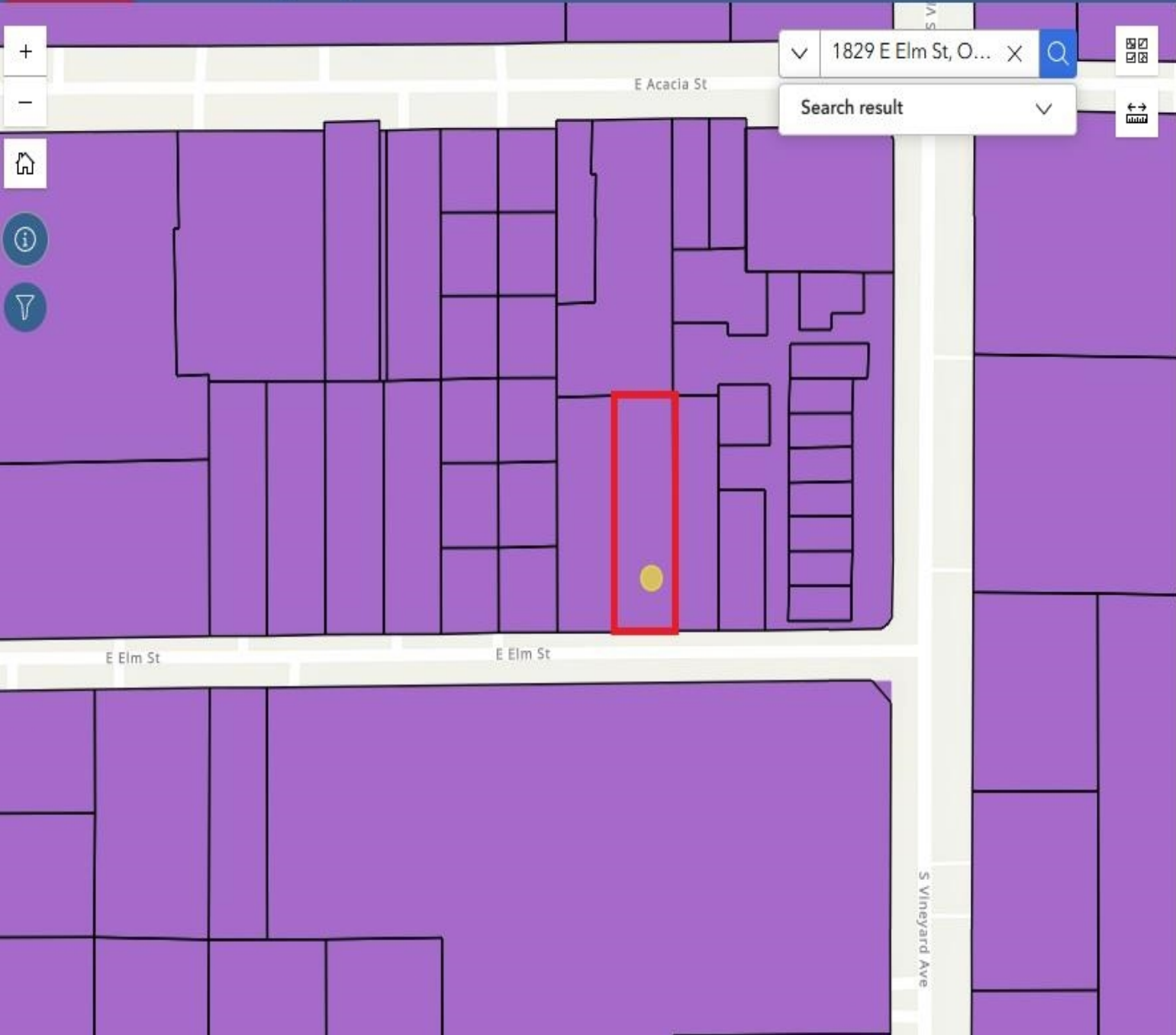
## UTILITIES

---

WATER	Available
ELECTRICITY / POWER	Available
GAS / PROPANE	Available
SEWER/SEPTIC	Septic

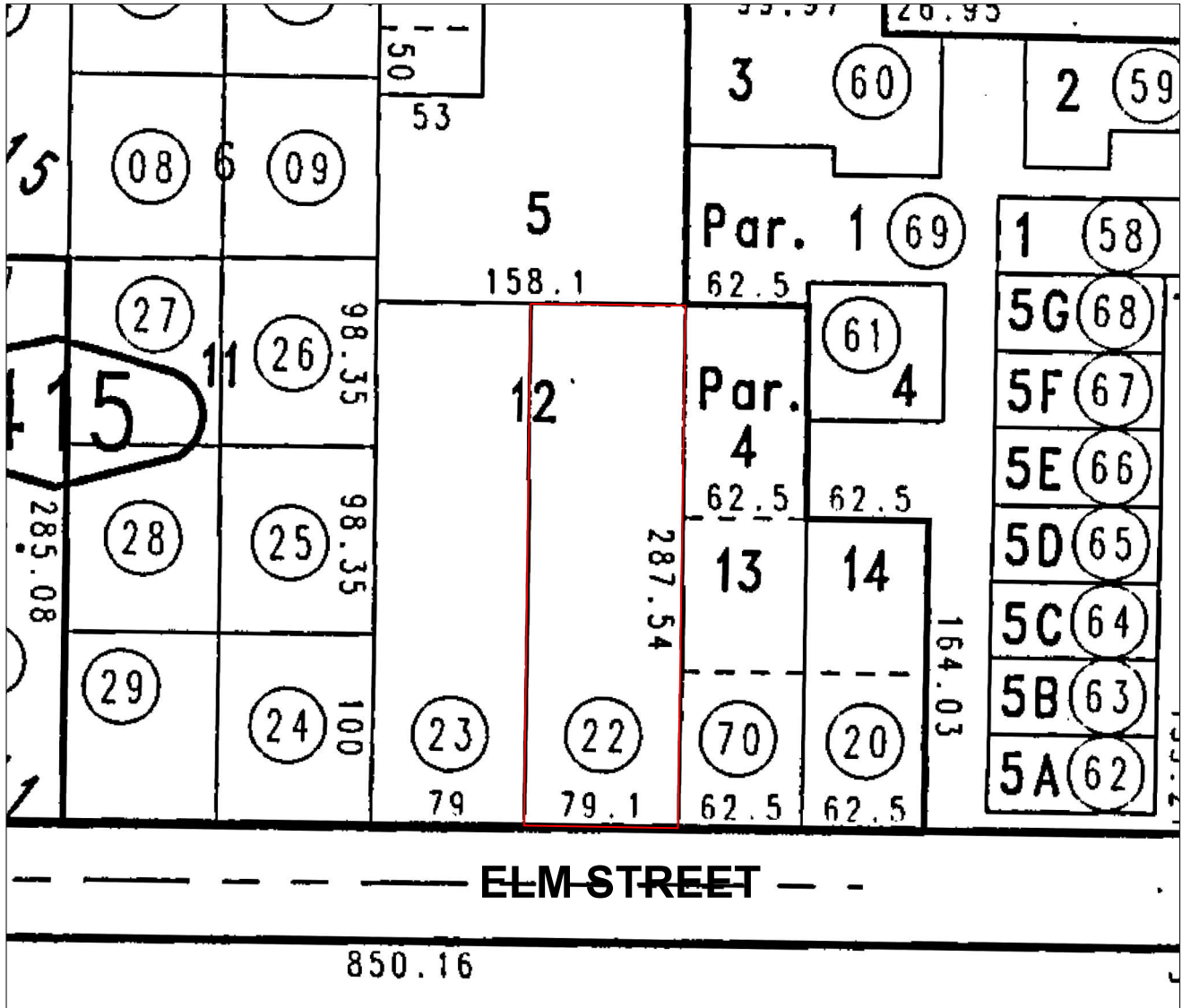






- ### Legend
- CS, Corner Store
  - CN, Neighborhood Commercial
  - CC, Community Commercial
  - CR, Regional Commercial
  - CCS, Convention Center Support Commercial
  - OL, Low Intensity Office
  - OH, High Intensity Office
  - BP, Business Park
  - IP, Industrial Park
  - IL, Light Industrial
  - IG, General Industrial**
  - IH, Heavy Industrial
  - PUD, Planned Unit Development
  - MHP, Mobile Home Park
  - ONT, Ontario International Airport
  - CIV, Civic
  - OS-R, Open Space-Recreation
  - OS-C, Open Space-Cemetery
  - UC, Utilities Corridor
  - RC, Rail Corridor
  - SP, Specific Plan

0 1 2  
Standard Scale 1 : 1



Property In Question - Fee

Item No. 8 - Easement for Public Utilities  
In 09/01/1960 Bk5227 Pg487 of Official Records  
The exact location of said easement cannot be determined and is not plottable

© 2026  
Fidelity National Title Company  
4210 Riverwalk Pkwy, Suite 200  
Riverside, CA 92505

Title Order No. : FBDO-2601120, Preliminary Report dated January 26, 2026

Drawing Date : 02/11/2026 - FNFI

Reference :

Assessor's Parcel No. : 0113-415-22-0-000

Property : 1829 East Elm Street, Ontario, CA 91761

Data :

This map/plat is being furnished as an aid in locating the herein described Land in relation to adjoining streets, natural boundaries and other land, and is not a survey of the land depicted. Except to the extent a policy of title insurance is expressly modified by endorsement, if any, the Company does not insure dimensions, distances, location of easements, acreage or other matters shown thereon.

Plat Showing : THE EAST 1/2 OF LOT 12 OF TRACT NO. 3400, IN THE CITY OF ONTARIO, COUNTY OF SAN BERNARDINO, STATE OF CALIFORNIA, AS PER PLAT RECORDED IN BOOK 45 PAGES 14 AND 15 OF MAPS, IN THE OFFICE OF THE COUNTY RECORDER OF SAID COUNTY.

Sheet  
1 of 1

Archive #