



## Tramway Avenue, London, E15

Prime office space for rent at Tramway Avenue, London, E15. This spacious property offers large workspace areas, two fitted commercial kitchen, meeting rooms and conference facilities, ideal for collaborative work. With key transport links too office, ensuring convenience for employees and clients.

### Features :

Meeting Room and Conference Facilities

Great Size

fully fitted commercial kitchen

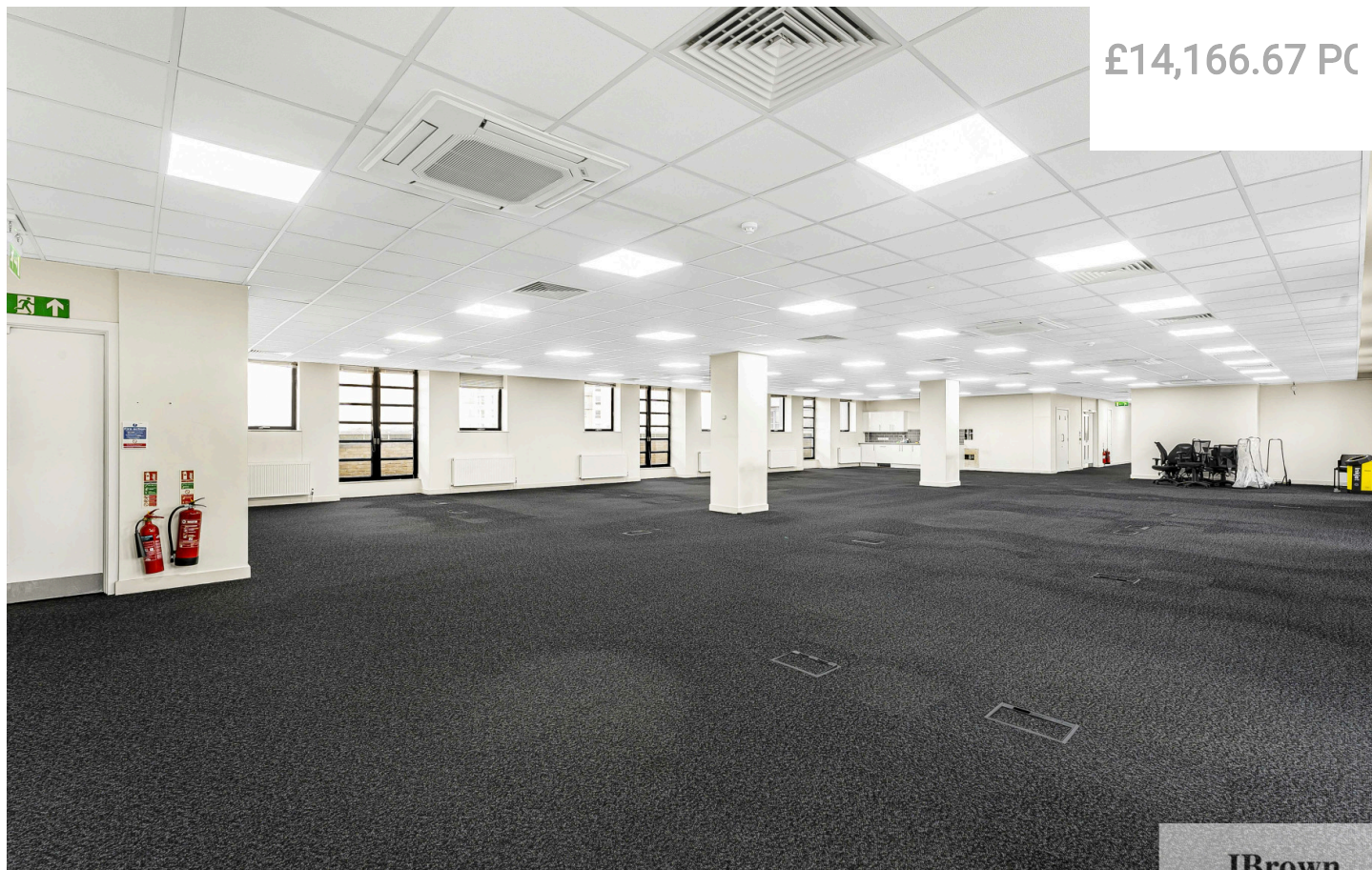
Great transport links into Central London

Prime London Location

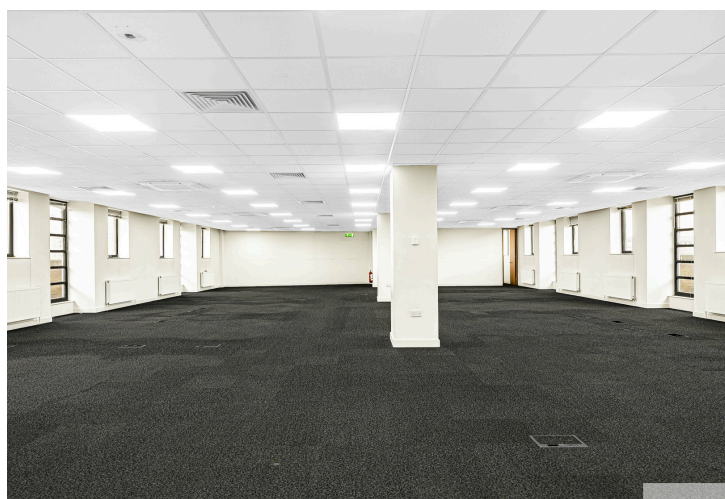
Office Space

# Tramway Avenue, London, E15

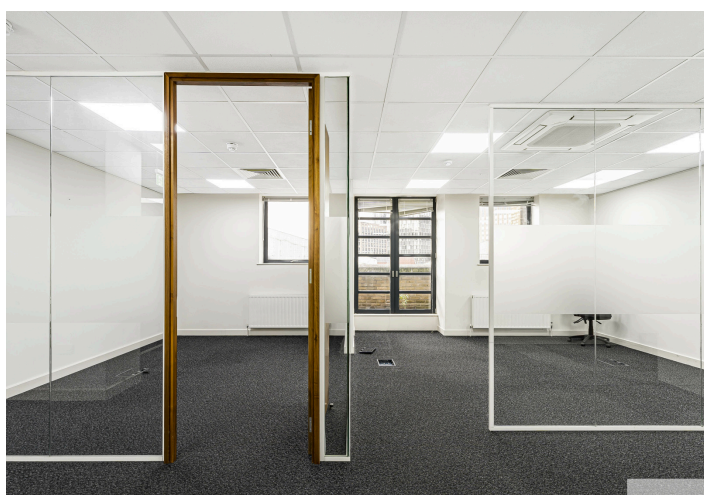
£14,166.67 PC



JBrown



JBrown



# Tramway Avenue, London, E15

Approximate Gross Internal Area 8448 sq ft - 785 sq m



Third Floor



Although Pink Plan Ltd ensures the highest level of accuracy, measurements of doors, windows and rooms are approximate and no responsibility is taken for error, omission or misstatement. These plans are for representation purposes only as defined by RICS code of measuring practise. No guarantee is given on total square footage of the property within this plan. The figure icon is for initial guidance only and should not be relied on as a basis of valuation.



**JBrown**  
international

**JBrown**  
International

Prime office space for rent at Tramway Avenue, London, E15. This spacious property offers large workspace areas, two fitted commercial kitchen, meeting rooms and conference facilities, ideal for collaborative work. With key transport links too office, ensuring convenience for employees and clients.

**JBrown International**

JBrown International