



Unit 5 Spring Road Industrial Estate

Spring Road, Smethwick, B66 1PE

Industrial To Let, Smethwick

11,960 sq ft
(1,111.12 sq m)

- 12,105 sq ft (1,124.54 sq m)
- Single storey office accommodation
- Easy access to J1 of the M5 Motorway
- 24 hour monitored CCTV security

Unit 5 Spring Road Industrial Estate, Spring Road, Smethwick, B66 1PE

Summary

Available Size	11,960 sq ft
Business Rates	N/A
Service Charge	N/A
EPC Rating	Upon enquiry

Description

Spon Lane Industrial Estate is situated on Spring Road, being adjacent to the M5 Motorway and accessed off the A4031 Spon Lane South. This road links with both the A4182 to the north and A457 Oldbury Road to the south and both lead to Junction 1 of the M5 half a mile to the east via the A4252 (Telford Way). West Bromwich town centre and Oldbury town centre are approximately 1.9 miles and 2 miles distant respectively.

Spon Lane Industrial Estate comprises thirteen units in three terraces and one detached building.

The unit is of single storey steel portal frame construction beneath a lined sheeted roof, with profile clad and blockwork elevations.

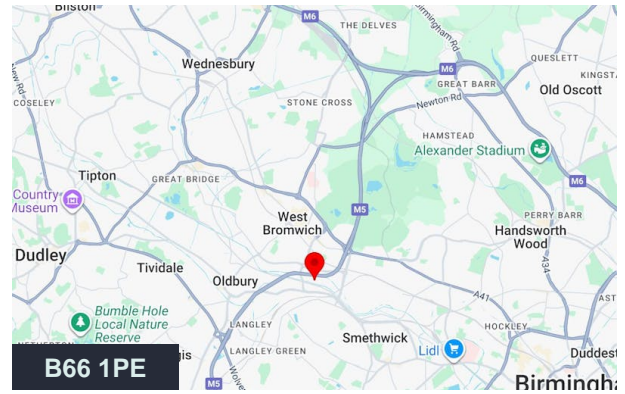
Access into the main warehouse area is via a single roller shutter door to the front of the unit, off a small forecourt providing vehicular access and parking. The unit has a clear working height of approximately 4.6 metres.

The single storey office accommodation is located to the front of the unit. The unit has lighting throughout, double glazed windows and male and female toilet facilities.

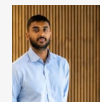
Unit 5 fronts the main estate road. The estate benefits from 24 hour monitored CCTV security.

Terms

£42,400 per annum exclusive of VAT.



Viewing & Further Information



Arjun Delay

01215617884 | 07966 469240

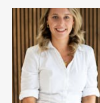
arjun.delay@fishergerman.co.uk



Mike Price

0121 561 7888 | 07909 596 051

mike.price@fishergerman.co.uk



Ellie Fletcher

01213 891507 | 07974 431243

ellie.fletcher@fishergerman.co.uk