

Guenther Mill

69 King Street, Dover, NJ

Renovated Historic 218,000sf Building Available for Flex Space, Warehousing & Light Manufacturing

NOW LEASING

1,000 - 25,000 SF

AVAILABLE UNITS

9,026 SF	\$8.00 PSF*	Unit A080
11,888 SF	\$9.25 PSF*	Unit A410
2,551 SF	\$9.25 PSF*	Unit A445

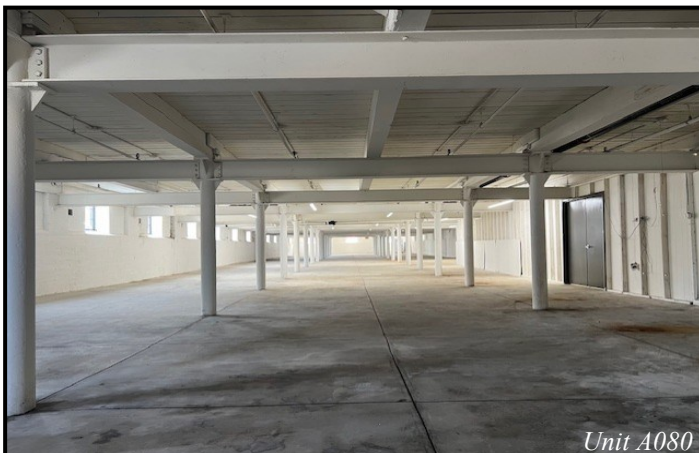
*(+\$2.28 PSF Taxes/CAM)

Property Features

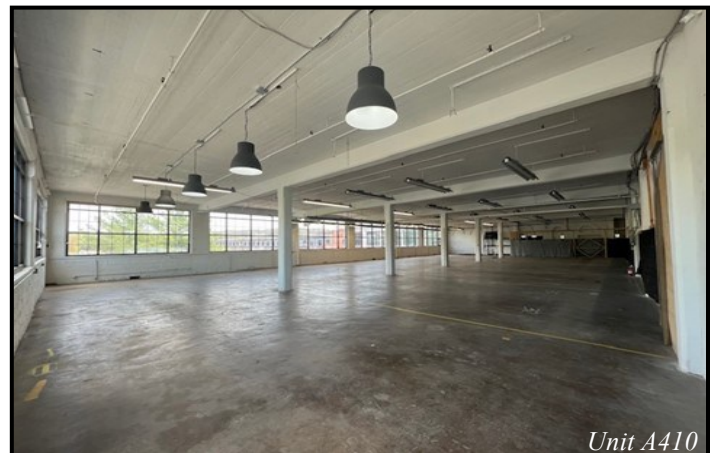
- Spacious open floor plans
- Three 5,000lb capacity elevators
- 7 loading docks
- 3-Phase electric & public sewer
- 24/7 Surveillance & access control system
- On-site property management
- On-site moving services
- Excellent proximity to skilled labor
- 212 Parking spaces
- Delivery of turn-key office space available



Unit A445



Unit A080



Unit A410

info@guenthermill.com

(201) 400-0122

www.guenthermill.com