



**817 Linslade Street #B
Gaithersburg, MD 20878**

EXCLUSIVE OFFERING

**Rare Live/Work
Office Space
FOR LEASE**



EXECUTIVE SUMMARY

- ◆ Main level commercial office suite in a detached Live/Work home on prominent corner lot in sought after Lakelands community.
- ◆ Plenty of on-street parking on two sides of a corner lot.
- ◆ Efficiently-designed office layout features reception area; open office/conference room area with fireplace and walls of windows; copier/file/storage area; private restroom; covered front porch seating area across from pocket park; and additional rear entrance.
- ◆ Excellent high-profile location accessible to major roadways such as Route I-270, I-370, and the ICC; Ride-on bus services
- ◆ One year+ lease being offered (lease expiration May 31, 2027)
- ◆ FURNISHED with all utilities included.

For More Information

Michael P. Rose

mprose57@aol.com

cell: 301-814-3200

Chris Nagel

chris@coakleyrealty.com

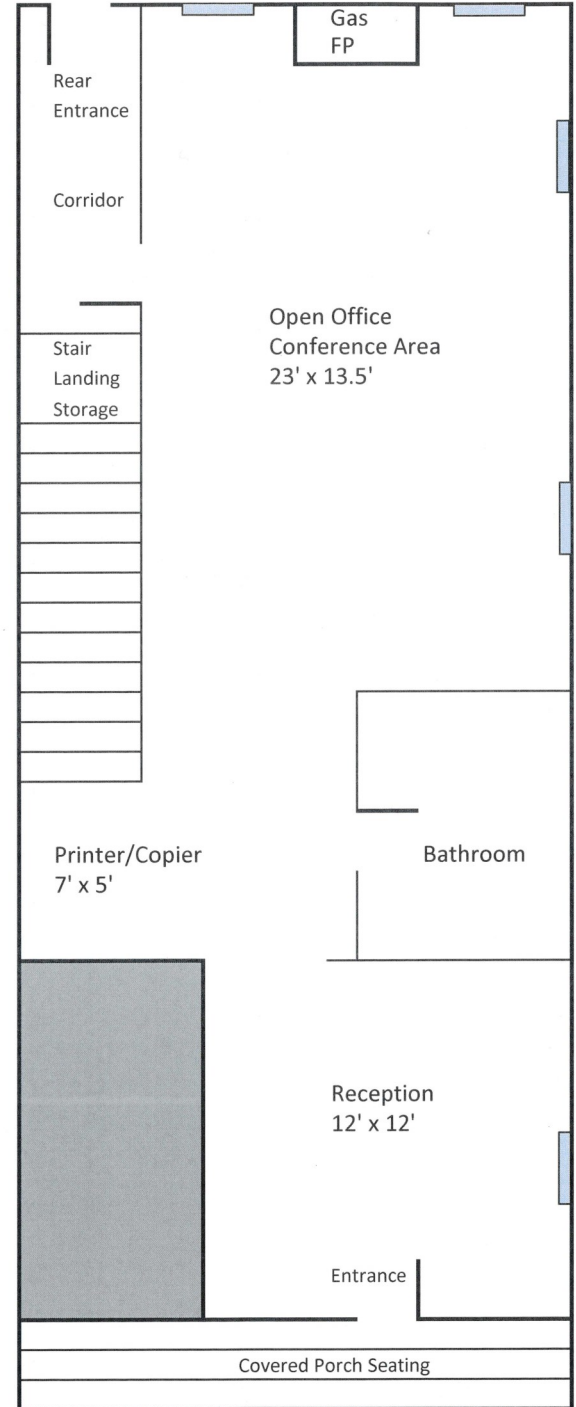
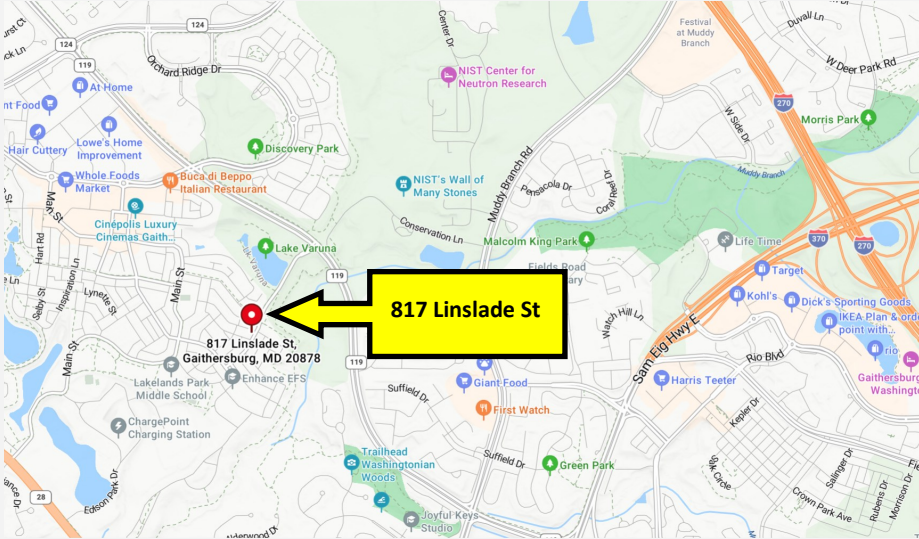
cell: 301-787-8001

Lease Rate: \$1,750/month



**817 Linslade Street #B
Gaithersburg, MD 20878**

**EXCLUSIVE OFFERING
Rare Live/Work
Office Space
FOR LEASE**



All information is deemed reliable, however no express representation is made nor is to be implied as to the accuracy thereof.

Rory S. Coakley Realty, Inc. | 20 Courthouse Square #107 | Rockville, MD 20850

(301) 340-8700 | www.coakleyrealty.com