



# GATEWAY

LOGISTICS CENTER



20,000 SF – 120,000 SF  
Available For Lease

Gandy Blvd. &  
Interstate 275



GREYSTAR®



VIEW WEBSITE

# Site Plan



**Gateway Logistics Center** is strategically located at the corner of I-275 and Gandy Blvd., one of the best sites in the heart of the Gateway submarket. The location provides **immediate access to the Howard Frankland and Gandy Bridges**. In addition to an excellent labor force, the location also benefits from proximity to:



3 separate I-275 interchanges within 3 miles



1 mile to U.S. Highway 19 N.



10 minutes to St. Pete/Clearwater Airport and only 20 minutes to TIA



6 miles to Downtown St. Petersburg

# Building Specs



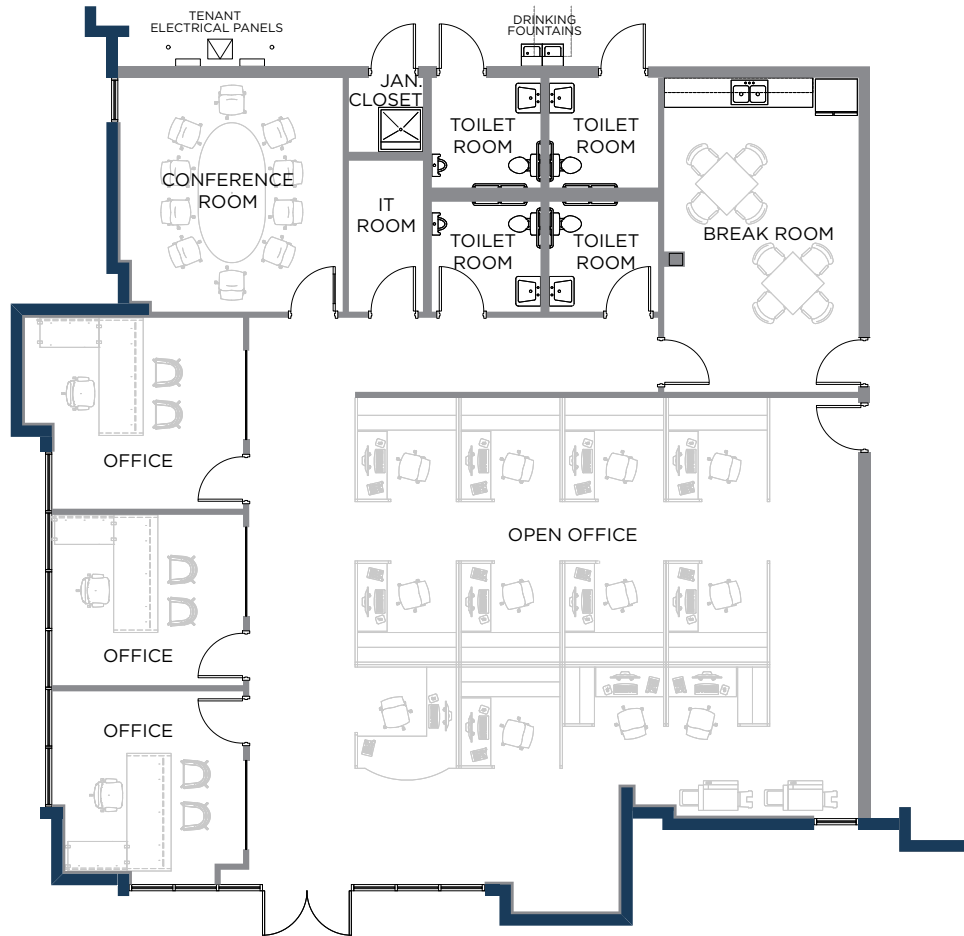
Building H	
Square Footage Available	20,000-117,175
Office Square Footage Available	2,918 Avail Now or Build-To-Suit
Clear Height	32'
Building Dimensions	810'x180'
Loading	Rear-load
Truck Court Depth	130'
Parking Ratio	2.55
Dock Doors	40
Drive-in Doors	1 Remaining, Ability to Add More
Construction	Tilt-wall
Roof System/Age	New, R19
Sprinkler System	ESFR
Power	3 phase 1600 amps w/ ability to accommodate 3200 amps
Column Spacing	54' x 40'
Slab Thickness	6"
Delivery	Available Now

Building C	
Square Footage Available	20,000 - 98,007
Office Square Footage Available	2,918 Avail Now or Build-To-Suit
Clear Height	32'
Building Dimensions	594' x 200'
Loading	Rear-load
Truck Court Depth	180' Shared
Parking Ratio	1.45
Dock Doors	31
Drive-in Doors	1
Construction	Tilt-wall
Roof System/Age	New, R19
Sprinkler System	ESFR
Power	3 phase 1600 amps w/ ability to accommodate 3200 amps
Column Spacing	54' x 46'-8"
Slab Thickness	6"
Delivery	Available Now

Building B	
Square Footage Available	20,000 - 92,841
Office Square Footage Available	2,918 Avail Now or Build-To-Suit
Clear Height	32'
Building Dimensions	512' x 180'
Loading	Rear-load
Truck Court Depth	180' Shared
Parking Ratio	1.43
Dock Doors	31
Drive-in Doors	2
Construction	Tilt-wall
Roof System/Age	New, R19
Sprinkler System	ESFR
Power	3 phase 1600 amps w/ ability to accommodate 3200 amps
Column Spacing	54' x 40'
Slab Thickness	6"
Delivery	Available Now

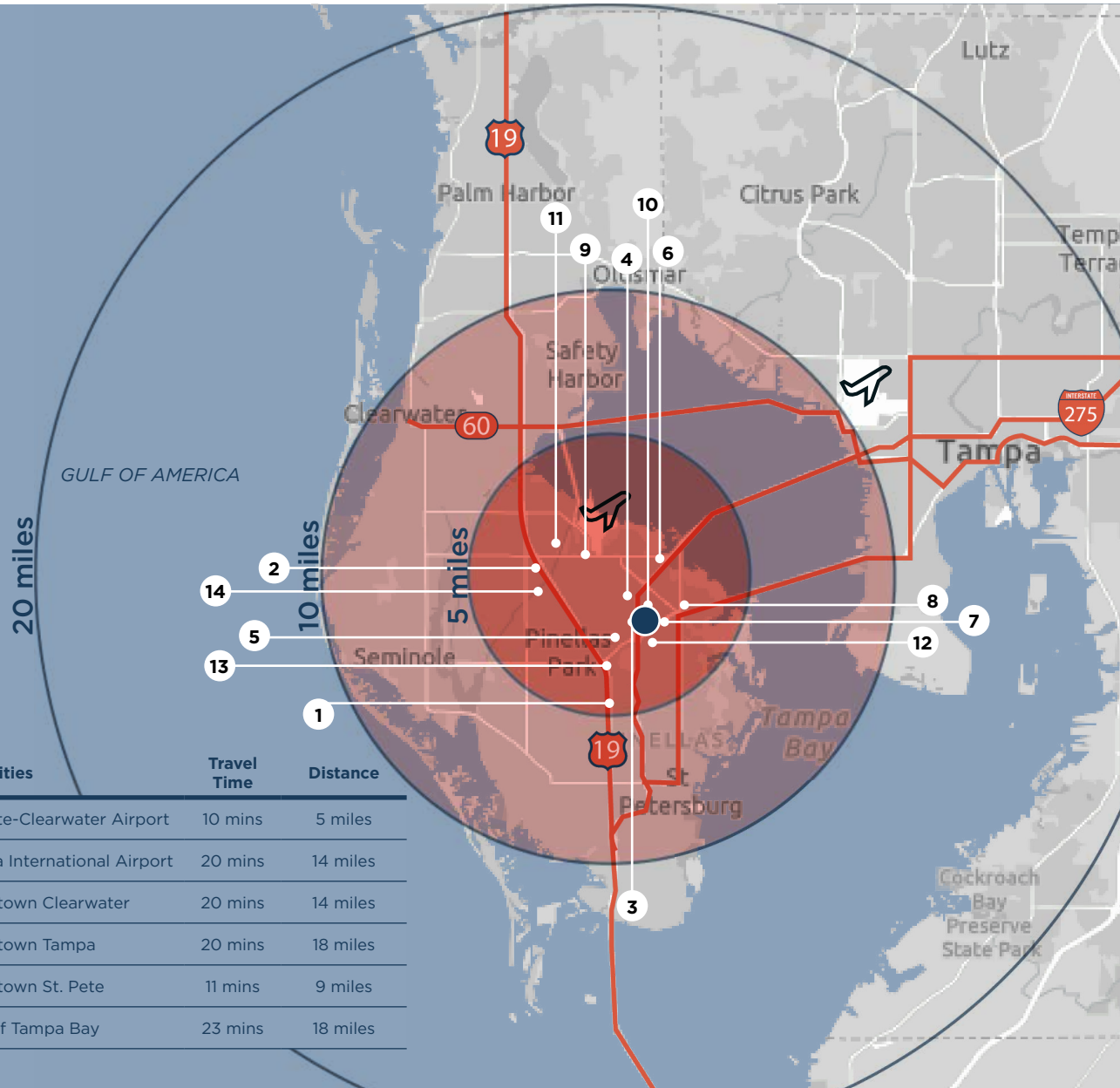
Building D	
Square Footage Available	20,000 - 119,481
Office Square Footage Available	2,918 Avail Now or Build-To-Suit
Clear Height	32'
Building Dimensions	594' x 200'
Loading	Rear-load
Truck Court Depth	180' Shared
Parking Ratio	1.41
Dock Doors	37
Drive-in Doors	2
Construction	Tilt-wall
Roof System/Age	New, R19
Sprinkler System	ESFR
Power	3 phase 1600 amps w/ ability to accommodate 3200 amps
Column Spacing	54' x 46'-8"
Slab Thickness	6"
Delivery	Available Now

# Office FloorPlan & Front Entrance



**Spec Office 2,918 SF**

# Location Overview



Amenities	Travel Time	Distance
St. Pete-Clearwater Airport	10 mins	5 miles
Tampa International Airport	20 mins	14 miles
Downtown Clearwater	20 mins	14 miles
Downtown Tampa	20 mins	18 miles
Downtown St. Pete	11 mins	9 miles
Port of Tampa Bay	23 mins	18 miles

## Corporate Neighbors

- 1** Tesla
- 2** Home Depot
- 3** Great Bay Distributors
- 4** Valpak
- 5** Power Design
- 6** Raymond James
- 7** Lockheed Martin
- 8** Jabil
- 9** UPS
- 10** Omnicell
- 11** Daiken
- 12** FedEx
- 13** Amazon
- 14** Honeywell



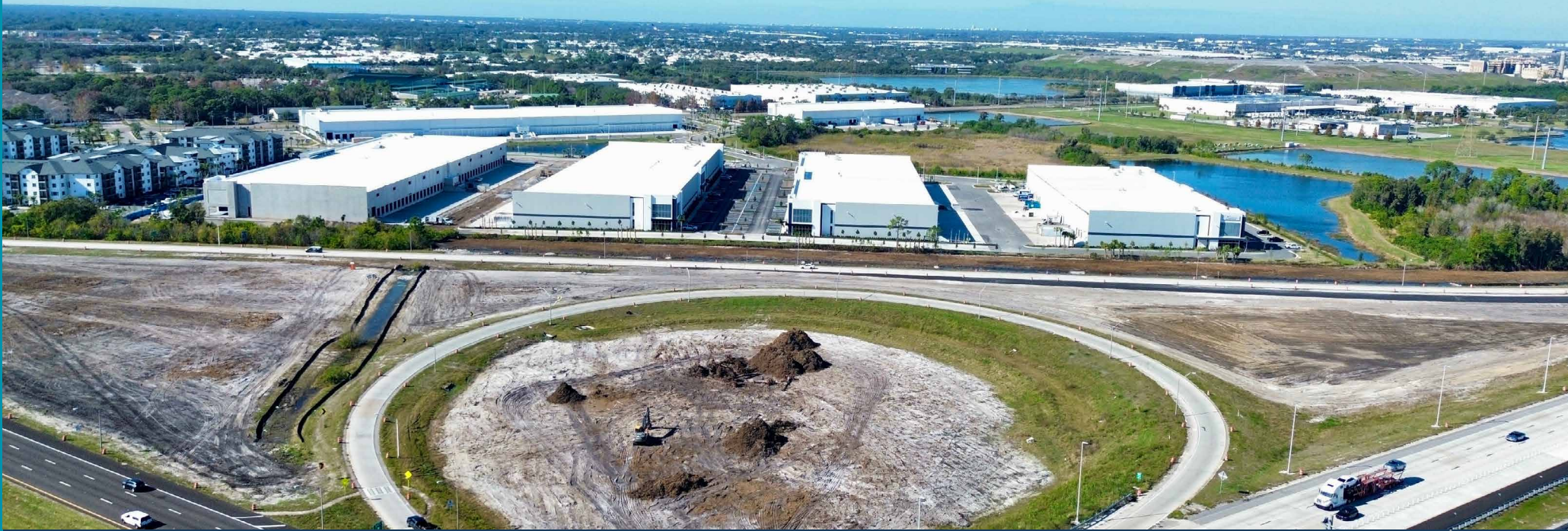
### Total Population

5 miles	243,359
10 miles	683,635
20 miles	1,655,382



### Workforce

5 miles	206,808
10 miles	586,122
20 miles	1,392,346



**GIVE US A CALL TO LEARN MORE ABOUT**

**GATEWAY LOGISTICS CENTER**



VIEW WEBSITE

**JT FAIRCLOTH, SIOR**  
SENIOR DIRECTOR  
813 833 3242  
[JT.FAIRCLOTH@CUSHWAKE.COM](mailto:JT.FAIRCLOTH@CUSHWAKE.COM)

**JOHN JACKSON, CCIM, SIOR**  
EXECUTIVE DIRECTOR  
727 643 7316  
[JOHN.JACKSON@CUSHWAKE.COM](mailto:JOHN.JACKSON@CUSHWAKE.COM)

**CASEY PERRY**  
DIRECTOR  
813 233 6564  
[CASEY.G.PERRY@CUSHWAKE.COM](mailto:CASEY.G.PERRY@CUSHWAKE.COM)



©2026 Cushman & Wakefield. All rights reserved. The information contained in this communication is strictly confidential. This information has been obtained from sources believed to be reliable but has not been verified. NO WARRANTY OR REPRESENTATION, EXPRESS OR IMPLIED, IS MADE AS TO THE CONDITION OF THE PROPERTY (OR PROPERTIES) REFERENCED HEREIN OR AS TO THE ACCURACY OR COMPLETENESS OF THE INFORMATION CONTAINED HEREIN, AND SAME IS SUBMITTED SUBJECT TO ERRORS, OMISSIONS, CHANGE OF PRICE, RENTAL OR OTHER CONDITIONS, WITHDRAWAL WITHOUT NOTICE, AND TO ANY SPECIAL LISTING CONDITIONS IMPOSED BY THE PROPERTY OWNER(S). ANY PROJECTIONS, OPINIONS OR ESTIMATES ARE SUBJECT TO UNCERTAINTY AND DO NOT SIGNIFY CURRENT OR FUTURE PROPERTY PERFORMANCE. COE-PM-CENTRAL- 06/01/26