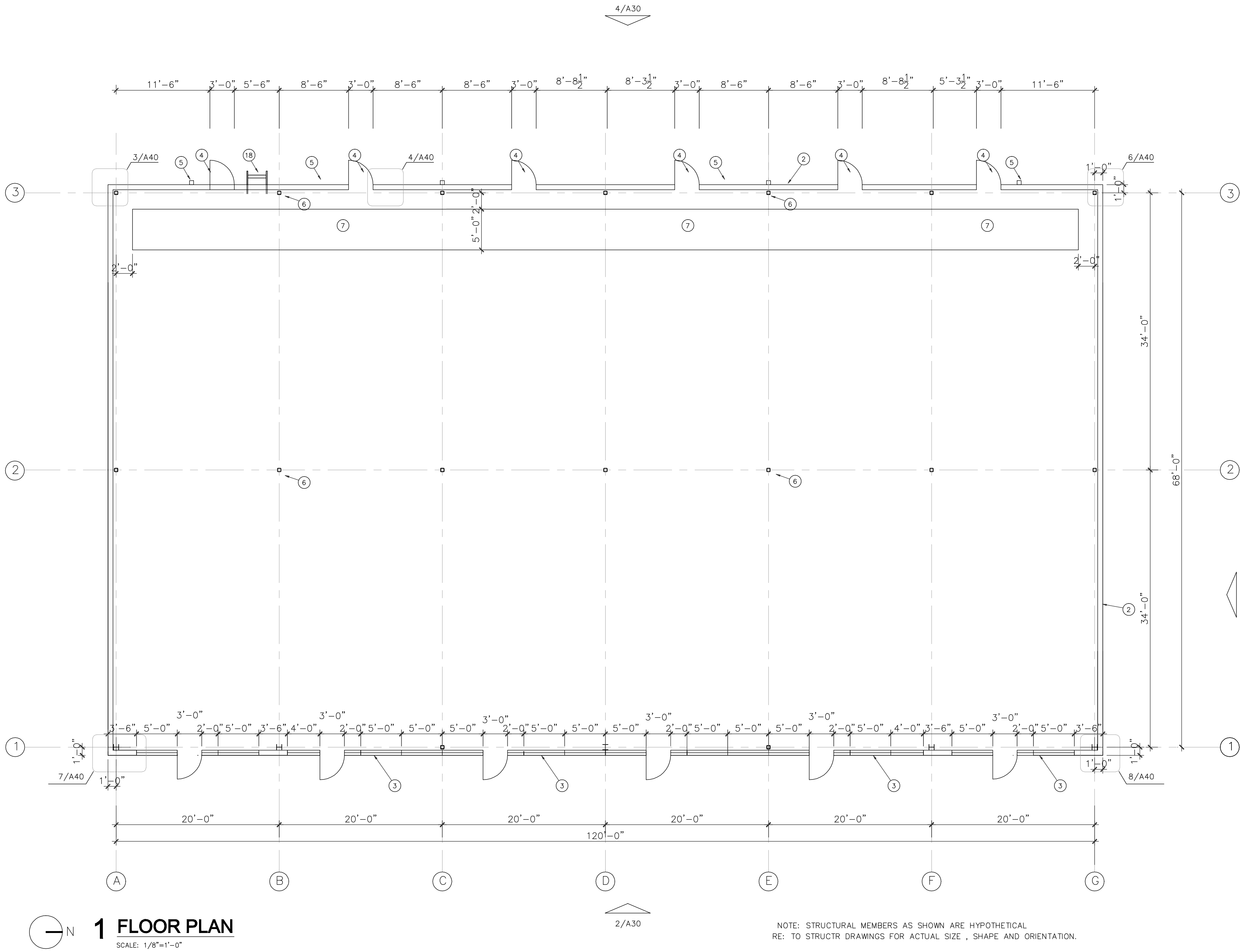


- 1 RIGID INSULATION SEE ENERGY FORM FOR THICKNESS
2 STUCCO PAINTED
3 STOREFRONT
4 HOLLOW METAL DOOR
5 DOWN SPOUT
6 STRUCTURAL MEMEBRS, SEE STRUCTURAL DRAWINGS
7 CONCRETE SLAB BLOCK OUT FOR UTILITY LINES
8 SUSPENDED CANOPY
9 CANOPY LIGHT (SURFACE MOUNT UNDERNEATH), SEE ELLECTRICAL
10 WALL PACK, SEE ELECTRICAL
11 WALL ON ROOF
12 CONTINUOUS GUTTER
13 60MIL, TPO ROOFING , MECH. FASTENED
ON PROTECTION BOARD ON ROOF DECK
14 30"x30" WALK PAD (HEAVY DUTY EPDM APPROX. .375 INCHES THICK)
15 CONCRETE SPLASH PAD
16 WELDED ALUM. PANEL
17 'FRY REGLET' (OR EQUAL) ALUM. REVEAL-1/2" V SHAPE @ 12" O.C. -PAINTED
DEATIL NOT ALL SHOWN , SEE BUILDING ELEVATION FOR LOCATIONS
18 GALV. STEEL LADDER WITH LOCABLE CAGE AND
CROSS OVER SAFETY RAILING



REVISIONS AND ISSUANCE		
NO.	DATE	DESCRIPTION
1	xx	ISSUE FOR PERMIT

SHOPPING CENTER OF STONE OAK
24272 Wilderness Oak (Shopping Center)
24278 Wilderness Oak (Child Care Center)
San Antonio, Texas 78258

this design / drawing are the property of JCC Architect, LLC. It is unlawful to copy or extract in any form unless it is authorized by JCC Architect, LLC.

Developer
AZEIA Holdings, LLC
shehmir9@gmail.com
fmo@Epicmedicalbilling.com

Civil Engineer
KLove Engineering LLC
klove@kloveengineering.com

Landscape Architect
EVERGREEN Design Group
Rodney@evergreendesigngroup.com

Structural Engineer
Mission Engineering, Inc.
dzhuang@missioneng.com

MEP Engineers
chihai.keng@gmail.com

REGISTERED ARCHITECT
JANICE HUNTER
2305
STATE OF TEXAS

JCC ARCHITECT, LLC
TX Reg. Arch No. 09305
jc@jccarch.com

DRAWN BY	CHECKED BY
JC	JC
DATE	JOB NO.
08012022	stoneoak-1

DRAWING TITLE

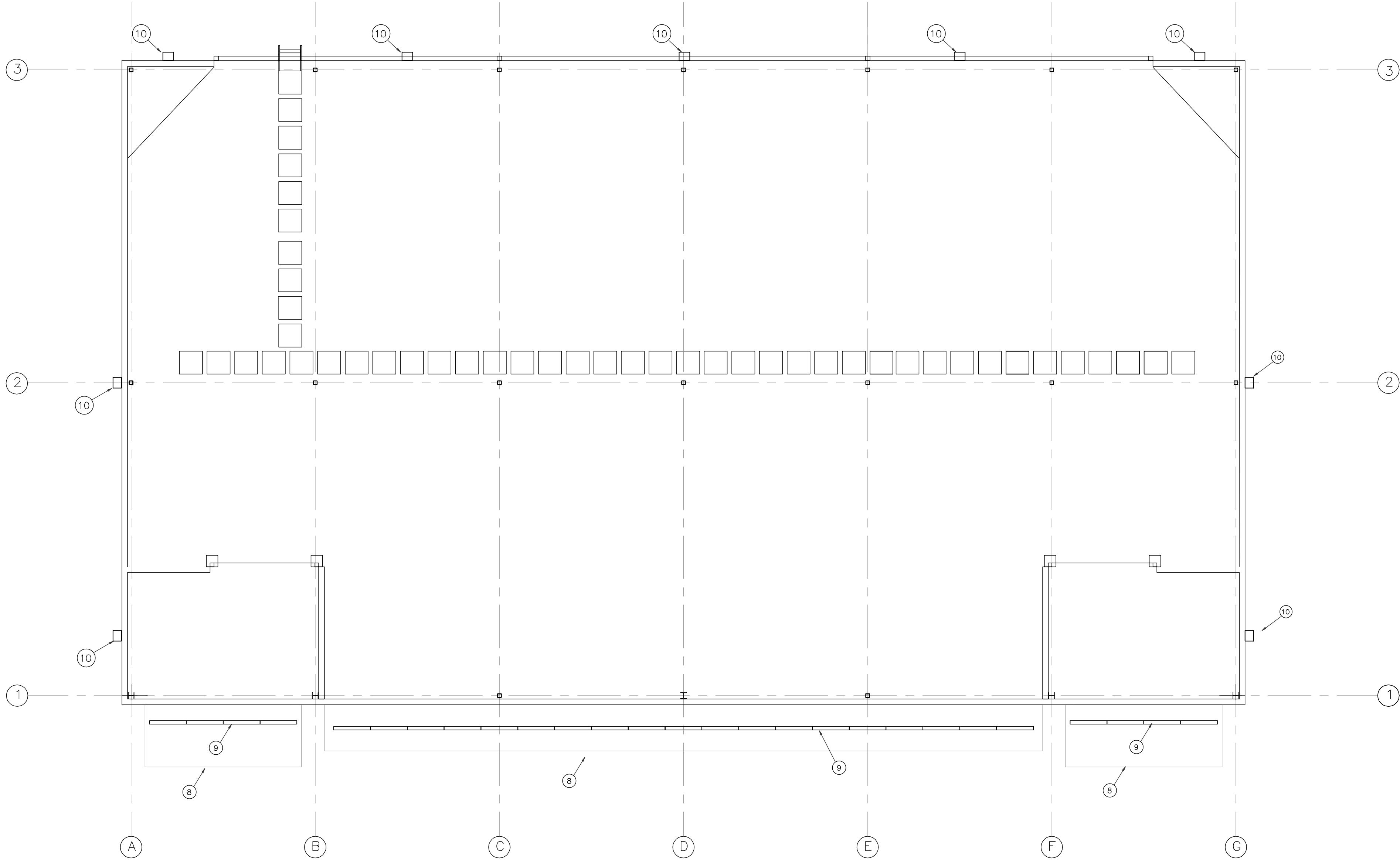
FLOOR PLAN

DRAWING NO.

A-20

C:\Users\JC\Dropbox\A-master\20 -San antonio\CD2\A20_21_50.dwg, 10/19/2022 11:01:49 AM, DWG to PDF.pc3

- 1 RIGID INSULATION SEE ENERGY FORM FOR THICKNESS
- 2 STUCCO PAINTED
- 3 STOREFRONT
- 4 HOLLOW METAL DOOR
- 5 DOWN SPOUT
- 6 STRUCTURAL MEMEBRS, SEE STRUCTURAL DRAWINGS
- 7 CONCRETE SLAB BLOCK OUT FOR UTILITY LINES
- 8 SUSPENDED CANOPY
- 9 CANOPY LIGHT (SURFACE MOUNT UNDERNEATH), SEE ELLECTRICAL
- 10 WALL PACK, SEE ELECTRICAL
- 11 WALL ON ROOF
- 12 CONTINUOUS GUTTER
- 13 60MIL, TPO ROOFING , MECH. FASTENED ON PROTECTION BOARD ON ROOF DECK
- 14 30"x30" WALK PAD (HEAVY DUTY EPDM APPROX. .375 INCHES THICK)
- 15 CONCRETE SPLASH PAD
- 16 WELDED ALUM. PANEL
- 17 'FRY REGLET' (OR EQUAL) ALUM. REVEAL-1/2" V SHAPE @ 12" O.C. --PAINTED DEATIL NOT ALL SHOWN , SEE BUILDING ELEVATION FOR LOCATIONS
- 18 GALV. STEEL LADDER WITH LOCABLE CAGE AND CROSS OVER SAFETY RAILING



N
1
2 REFLECTED CEILING PLAN
SCALE: 1/8"=1'-0"

REVISIONS AND ISSUANCE		
NO.	DATE	DESCRIPTION
1	xx	ISSUE FOR PERMIT

SHOPPING CENTER OF STONE OAK
24272 Wilderness Oak (Shopping Center)
24278 Wilderness Oak (Child Care Center)
San Antonio, Texas 78258

this design / drawing are the property of JCC Architect, LLC. It is unlawful to copy or extract in any form unless it is authorized by JCC Architect, LLC.

Developer
AZEIA Holdings, LLC
shehmir9@gmail.com
fma@Epicmedicalbilling.com

Civil Engineer
KLove Engineering LLC
klove@kloveengineering.com

Landscape Architect
EVERGREEN Design Group
Rodney@evergreendesigngroup.com

Structural Engineer
Mission Engineering, Inc.
dzhuang@missioneng.com

MEP Engineers
chihai.keng@gmail.com


JCC ARCHITECT, L.L.C.
TX Reg. Arch No. 09305
jc@jccarch.com

DRAWN BY	CHECKED BY
JC	JC
DATE	JOB NO.
08012022	stoneoak-1

DRAWING TITLE
REF. CLG PLAN
DRAWING NO.
A-21

- 1

RIGID INSULATION SEE ENERGY FORM FOR THICKNESS
- 2

STUCCO PAINTED
- 3

STOREFRONT
- 4

HOLLOW METAL DOOR
- 5

DOWN SPOUT
- 6

STRUCTURAL MEMEBRS, SEE STRUCTURAL DRAWINGS
- 7

CONCRETE SLAB BLOCK OUT FOR UTILITY LINES
- 8

SUSPENDE CANOPY
- 9

CANOPY LIGHT (SURFACE MOUNT UNDERNEATH), SEE ELLECTRICAL
- 10

WALL PACK, SEE ELECTRICAL
- 11

WALL ON ROOF
- 12

CONTINUOUS GUTTER
- 13

60MIL, TPO ROOFING , MECH. FASTENED
ON PROTECTION BOARD ON ROOF DECK
- 14

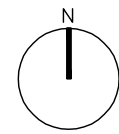
30"x30" WALK PAD (HEAVY DUTY EPDM APPROX. .375 INCHES THICK)
- 15

CONCRETE SPLASH PAD
- 16

WELDED ALUM. PANEL
- 17

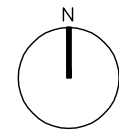
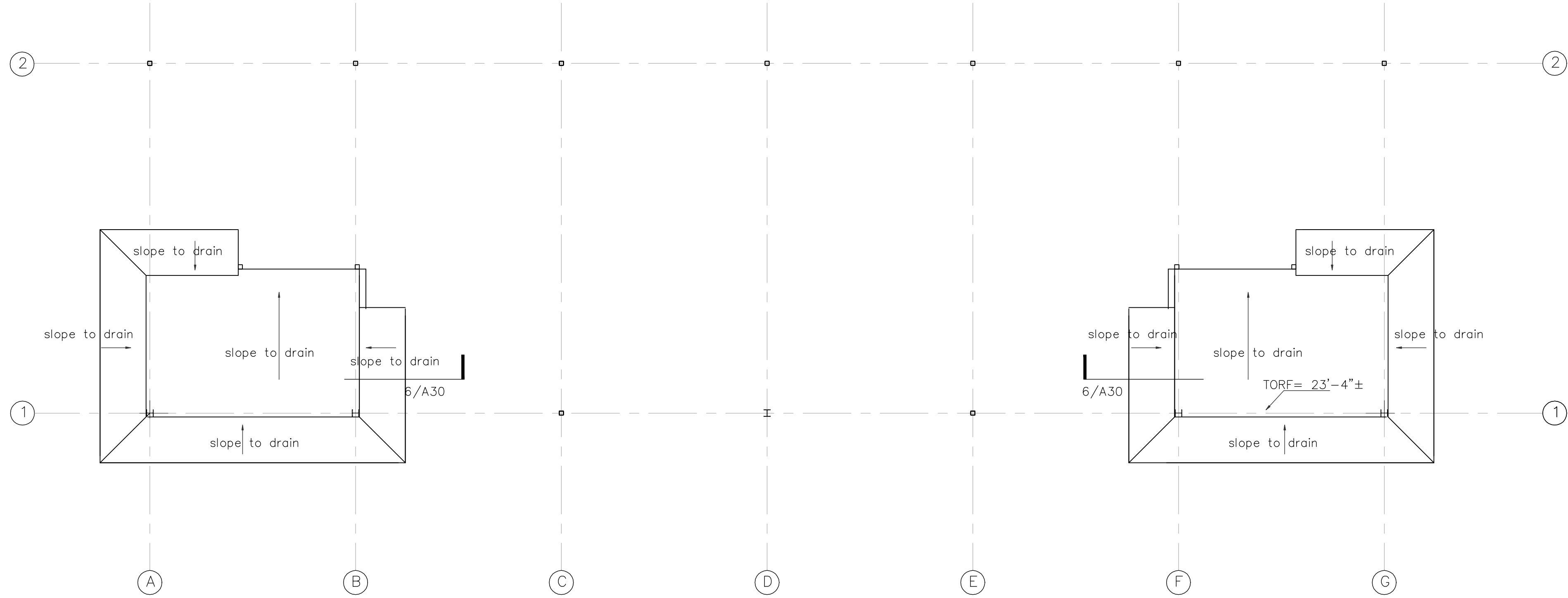
"FRY REGLET" (OR EQUAL) ALUM. REVEAL-1/2" V SHAPE @ 12" O.C. -PAINTED
DEATIL NOT ALL SHOWN , SEE BUILDING ELEVATION FOR LOCATIONS
- 18

GALV. STEEL LADDER WITH LOCABLE CAGE AND
CROSS OVER SAFETY RAILING



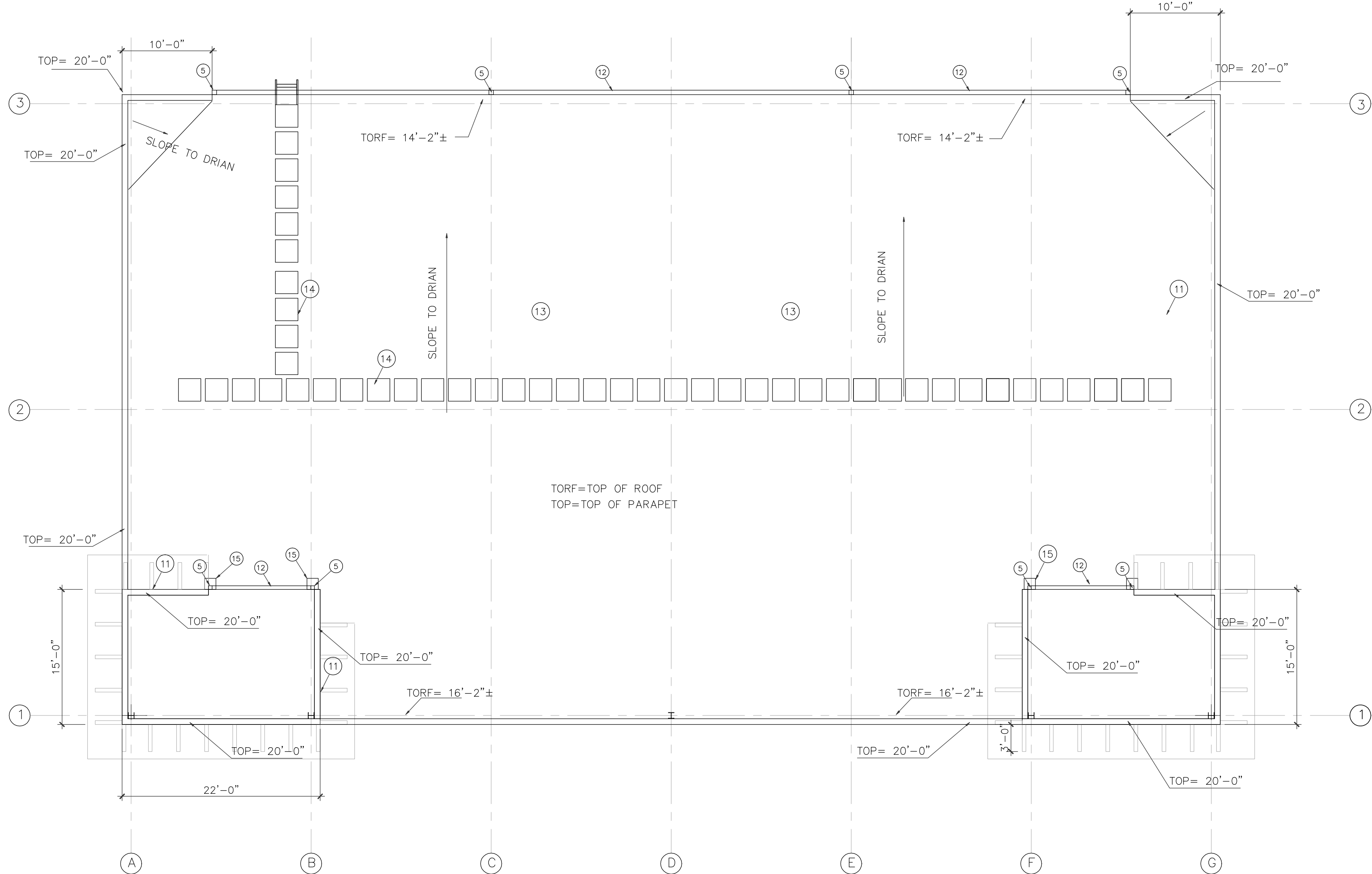
1 TOWER ROOF

SCALE: 1/8"=1'-0"



1 ROOF PLAN

SCALE: 1/8"=1'-0"



REVISIONS AND ISSUANCE		
NO.	DATE	DESCRIPTION
1	xx	ISSUE FOR PERMIT

SHOPPING CENTER OF STONE OAK
24272 Wilderness Oak (Shopping Center)
24278 Wilderness Oak (Child Care Center)
San Antonio, Texas 78258

this design / drawing are the property of JCC Architect, LLC. It is unlawful to copy or extract in any form unless it is authorized by JCC Architect, LLC.

Developer
AZEIA Holdings, LLC
shehmir9@gmail.com
fmo@Epicmedicalbilling.com

Civil Engineer
KLove Engineering LLC
klove@kloveengineering.com

Landscape Architect
EVERGREEN Design Group
Rodney@evergreendesigngroup.com

Structural Engineer
Mission Engineering, Inc.
dzhuang@missioneng.com

MEP Engineers
chihai.keng@gmail.com


JCC ARCHITECT, LLC
TX Reg. Arch No. 09305
jc@jccarch.com

DRAWN BY JC
CHECKED BY JC

DATE 08012022
JOB NO. stoneoak-1

DRAWING TITLE

**HIGH AND LOW
ROOF PLANS**

DRAWING NO.

A-22

REVISIONS AND ISSUANCE		
NO.	DATE	DESCRIPTION
1	xx	ISSUE FOR PERMIT

SHOPPING CENTER OF STONE OAK
24272 Wilderness Oak (Shopping Center)
24278 Wilderness Oak (Child Care Center)
San Antonio, Texas 78258

this design / drawing are the property of JCC Architect, LLC. It is unlawful to copy or extract in any form unless it is authorized by JCC Architect, LLC.

Developer
AZEIA Holdings, LLC
shehmir9@gmail.com
fmo@epiomedicalbilling.com

Civil Engineer
KLove Engineering LLC
klove@kloveengineering.com

Landscape Architect
EVERGREEN Design Group
Rodney@evergreendesigngroup.com

Structural Engineer
Mission Engineering, Inc.
dzhuang@missioneng.com

MEP Engineers
chihai.keng@gmail.com

REGISTERED ARCHITECT
JANICE HUNTER
#3305
STATE OF TEXAS

JCC ARCHITECT, LLC
TX Reg. Arch No. 09305
jc@jccarch.com

DRAWN BY JC

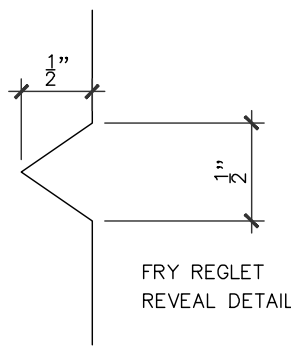
DATE 08012022
JOB NO. stoneoak-1

DRAWING TITLE

ELEVATIONS AND SECTIONS

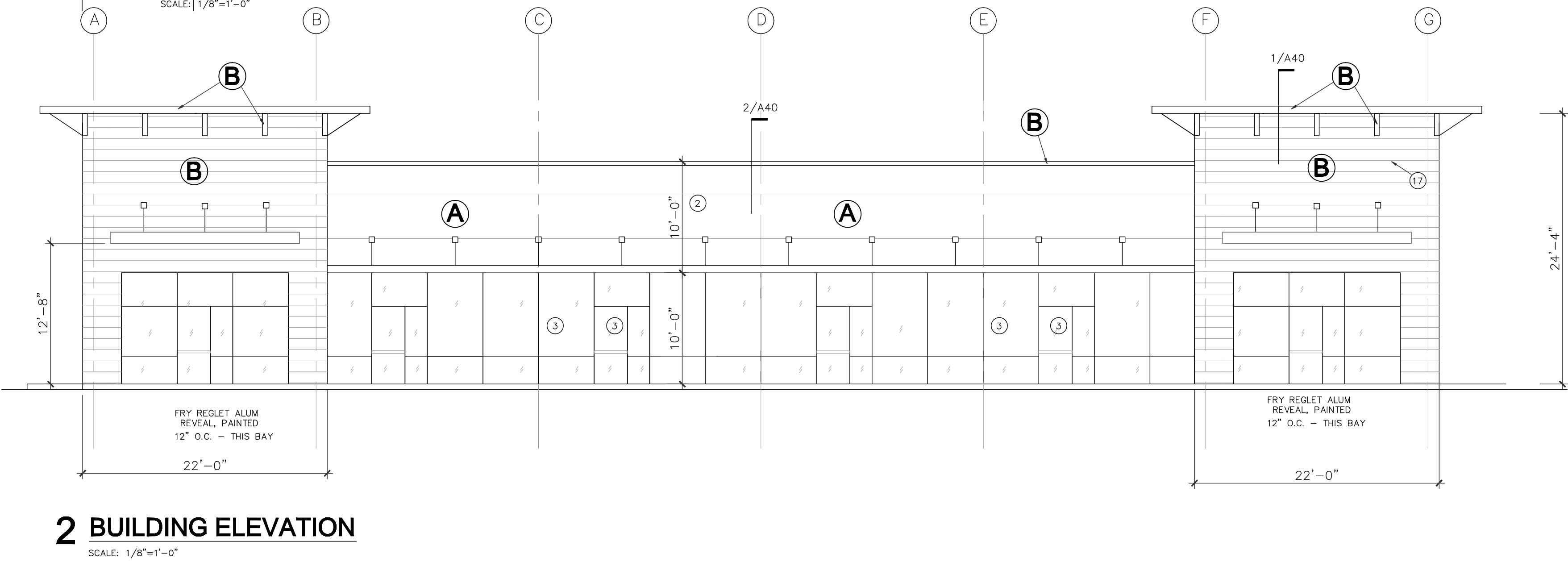
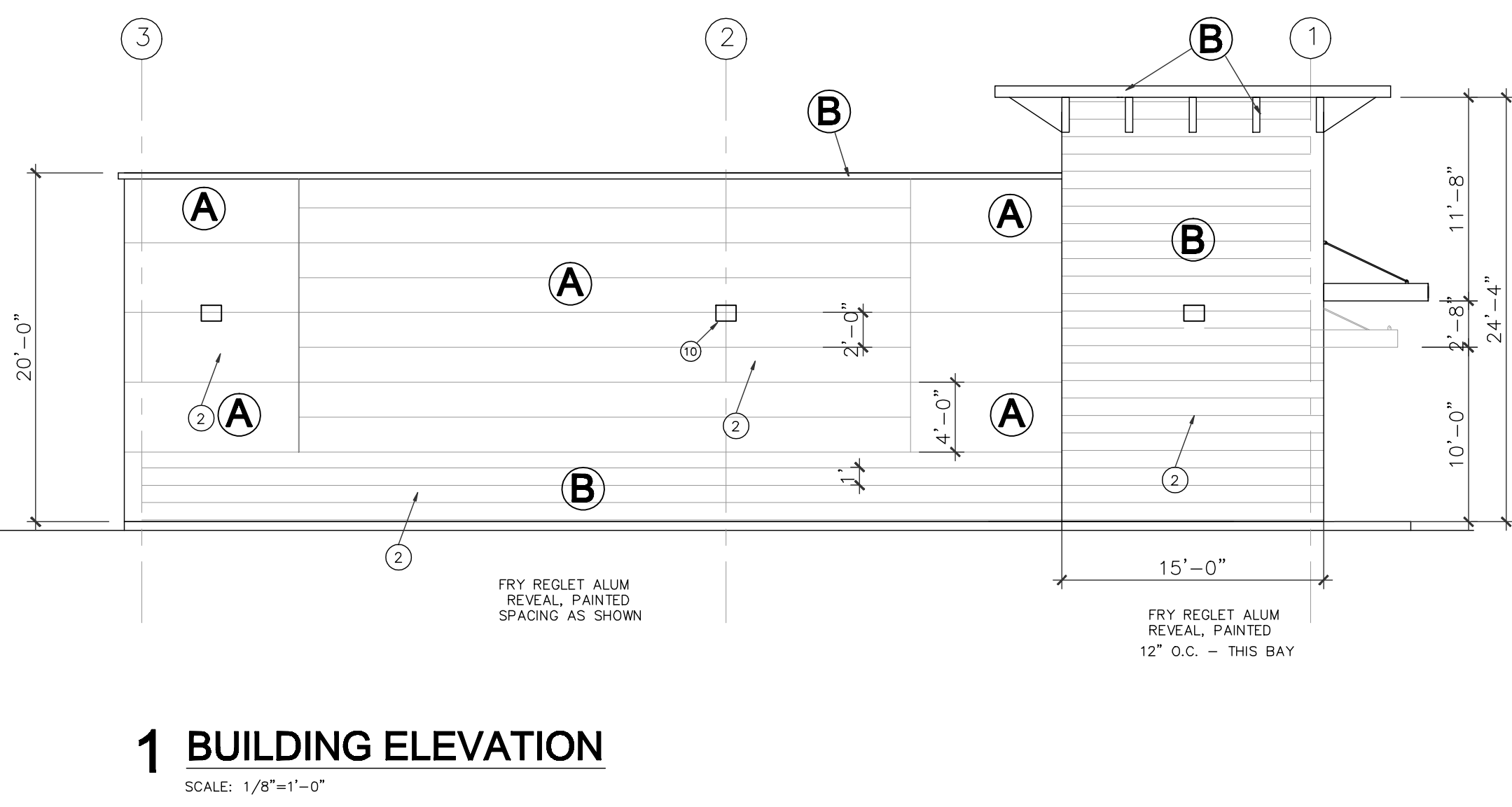
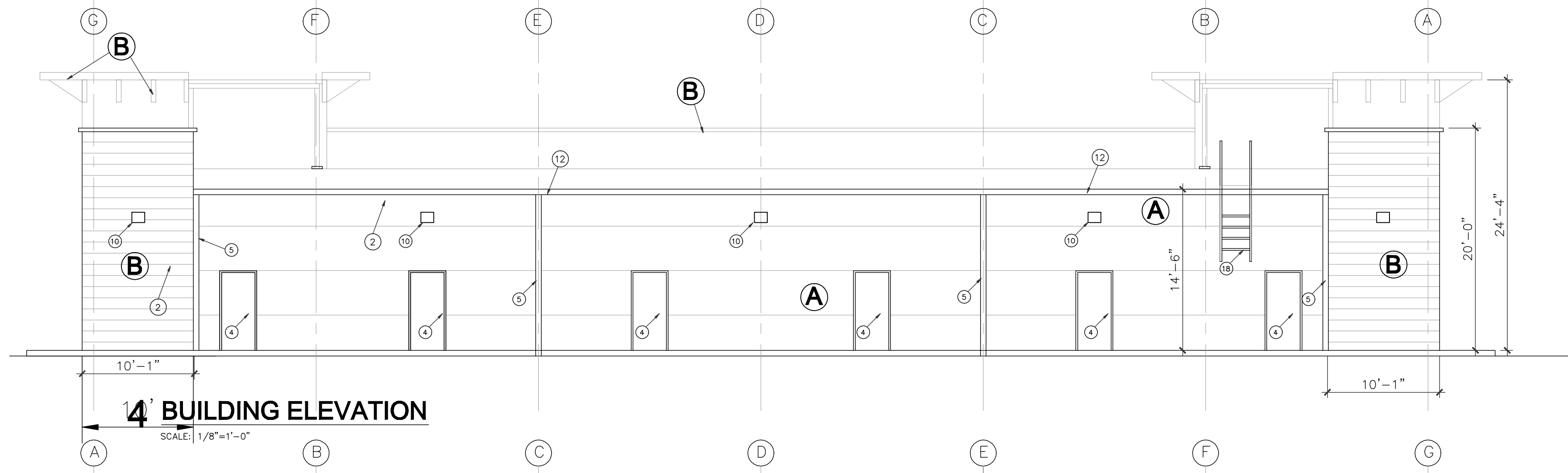
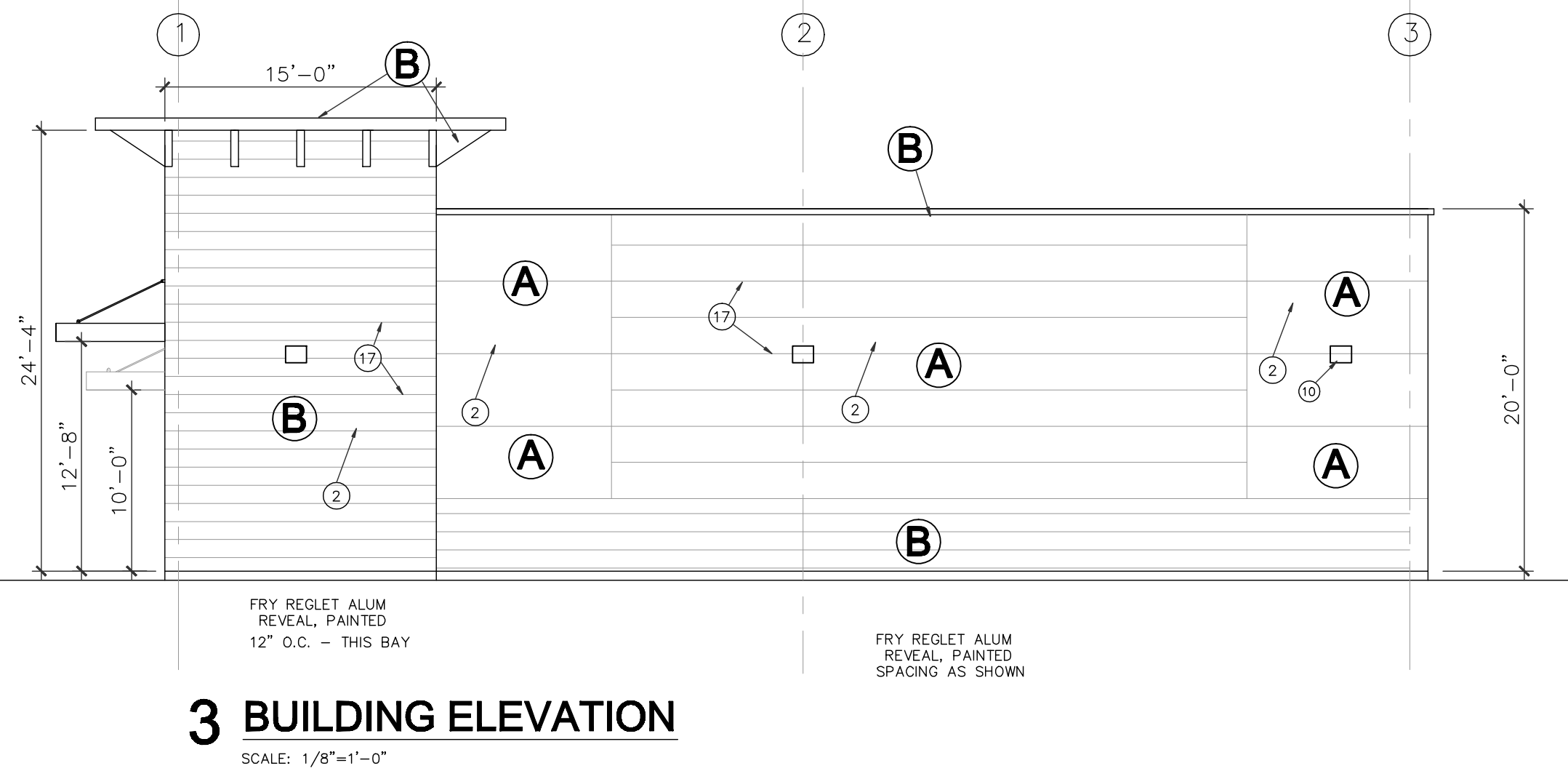
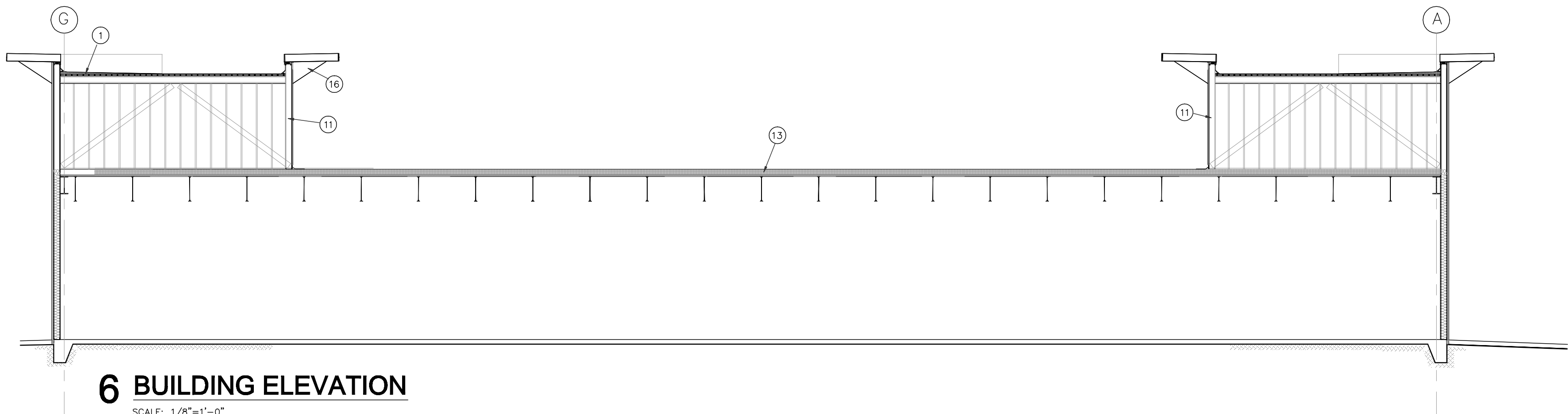
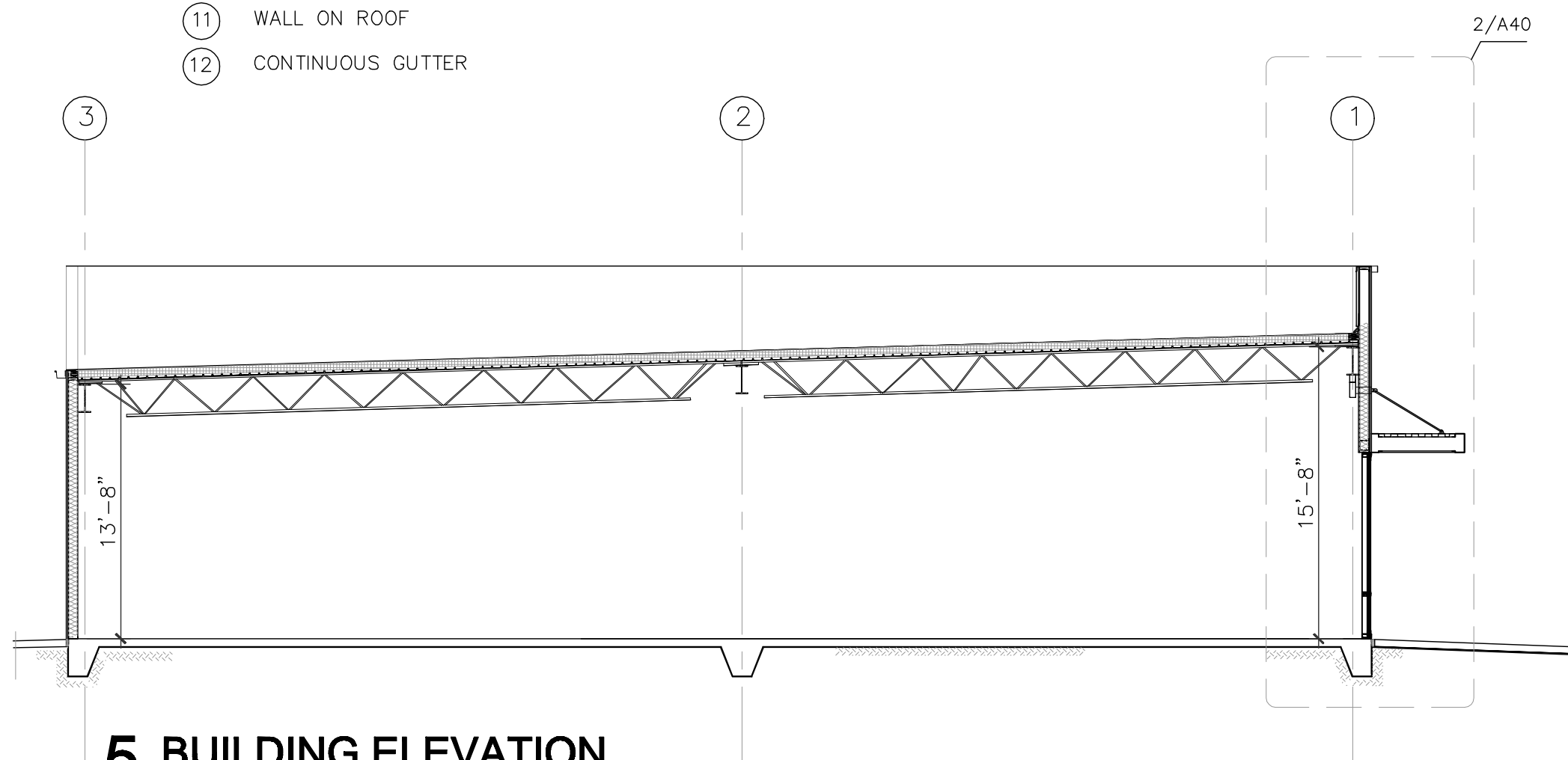
DRAWING NO.

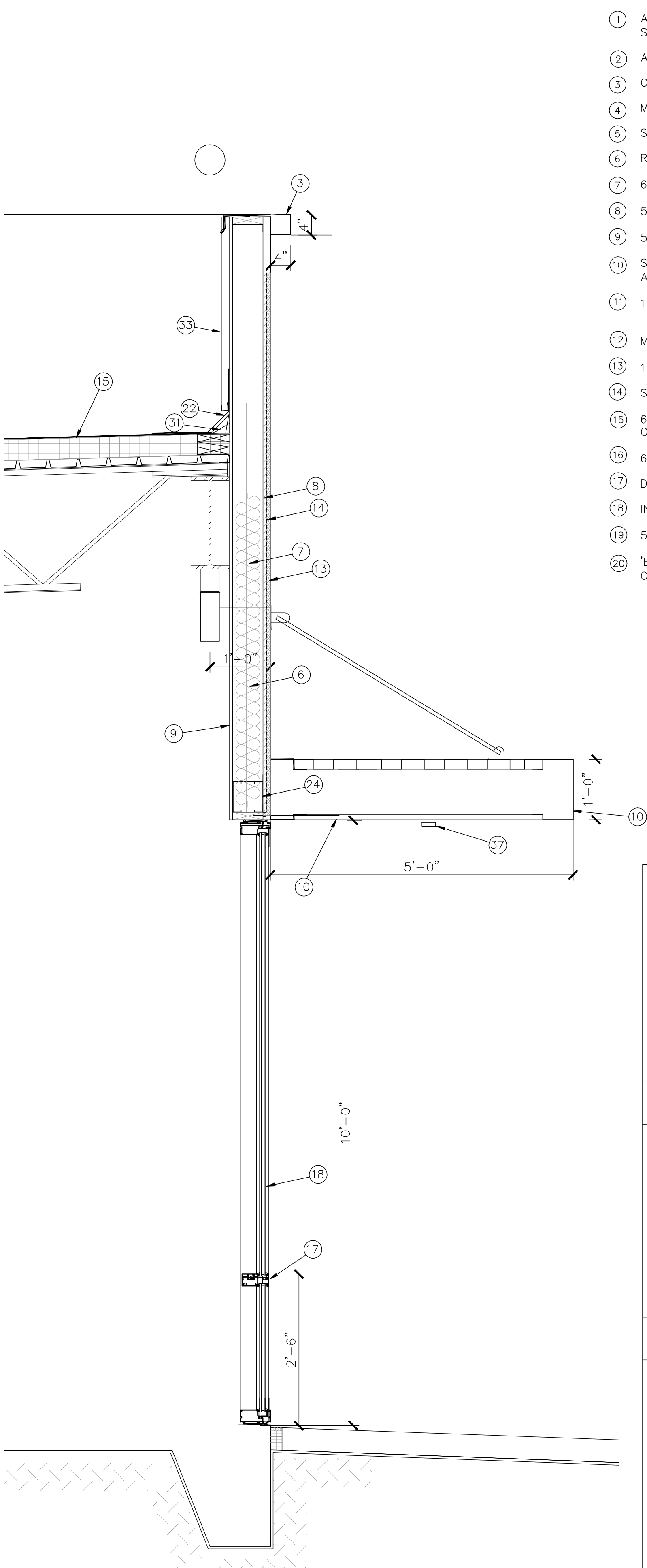
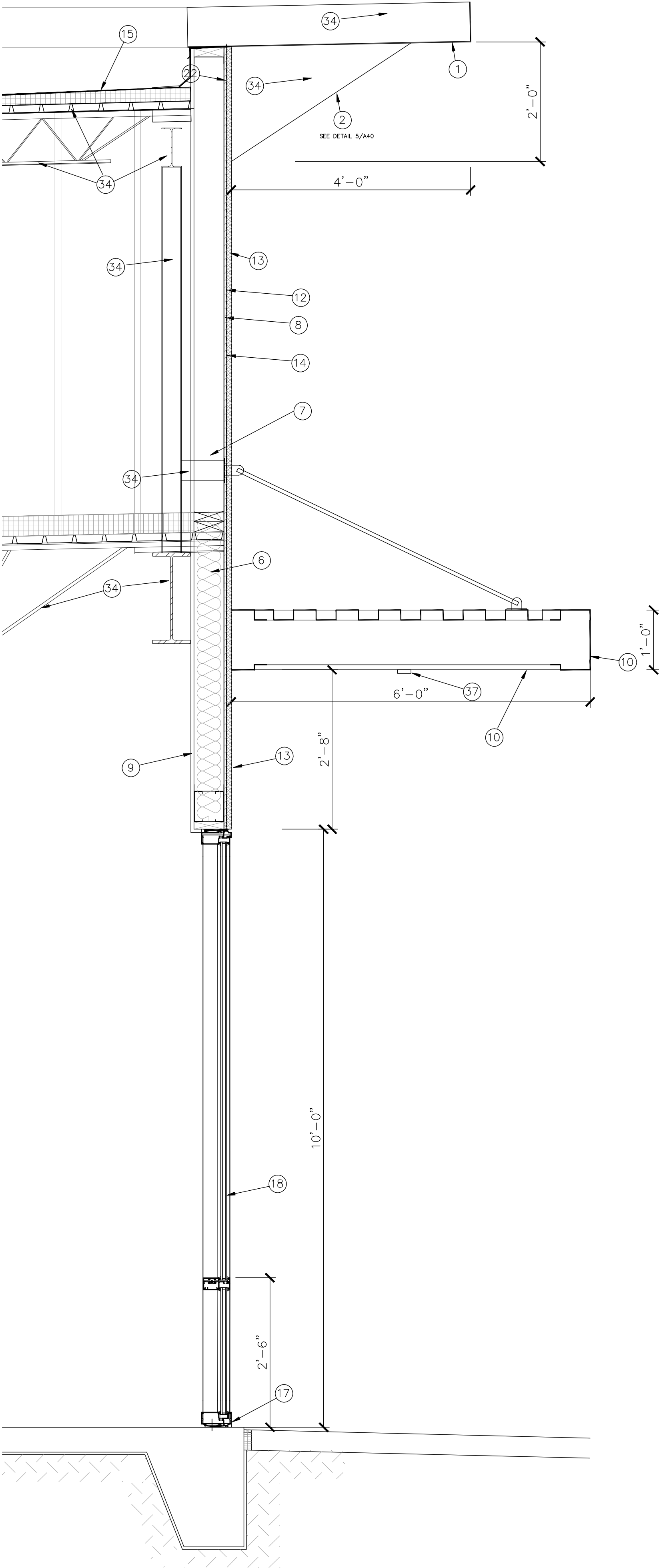
A-30



- A : COLOR 1 SHERWIN WILLIAMS SW 6147-PANDA WHITE
B : COLOR 2 SHERWIN WILLIAMS SW 7514- FOOHILLS

- 1 RIGID INSULATION SEE ENERGY FORM FOR THICKNESS
2 STUCCO PAINTED
3 STOREFRONT
4 HOLLOW METAL DOOR
5 DOWN SPOUT
6 STRUCTURAL MEMEBRS, SEE STRUCTURAL DRAWINGS
7 CONCRETE SLAB BLOCK OUT FOR UTILITY LINES
8 SUSPENDED CANOPY
9 CANOPY LIGHT (SURFACE MOUNT UNDERNEATH), SEE ELLECTRICAL
10 WALL PACK, SEE ELECTRICAL
11 WALL ON ROOF
12 CONTINUOUS GUTTER
13 60MIL, TPO ROOFING , MECH. FASTENED ON PROTECTION BOARD ON ROOF DECK
14 30"x30" WALK PAD (HEAVY DUTY EPDM APPROX. .375 INCHES THICK)
15 CONCRETE SPLASH PAD
16 WELDED ALUM. PANEL
17 'FRY REGLET' (OR EQUAL) ALUM. REVEAL-1/2" V SHAPE @ 12" O.C. -PAINTED DEATIL NOT ALL SHOWN , SEE BUILDING ELEVATION FOR LOCATIONS
18 GALV. STEEL LADDER WITH LOCABLE CAGE AND CROSS OVER SAFETY RAILING





- 1

ALUM. WELDED PANEL –PAINTED, MIN. WALL THICKNESS OF SIDES AND BOTTOM SHALL BE .125",
- 2

ALUM. BRACKET, ATTACHED TO METAL STUD FRAME, SEE DETAIL FOR DIMENSIONS
- 3

CONTINUOUS ALUM. CAP,
- 4

MEMBRANE WATER PROOFING ON ROOF DECK, SLOPE TO DRAIN
- 5

STRUCTURAL MEMBERS, RE: STRUCT. DRAWINGS
- 6

R=19 BATT INSULATION,
- 7

6" METAL STUDS , RE: STRUCT. DRAWINGS FOR GA. AND SPACING
- 8

5/8" SHEATHING APPLY MOISTURE BARRIER THROUGH OUT ('TYVEK')
- 9

5/8" 'X' TYPE GYP. BD, (BY BUILDING SHELL)
- 10

SUSPENDED ALUM. CANOPY, MANUFACTURED BY PERFECTION ARCHITECTURAL SYSTEMS, INC. OR EQUAL (FLAT PANEL AT SIDES AND BOTTOM)
- 11

1/2"x1/2" FRY REGLET ALUM. 1/2"x1/2" RAIN DRIP – PAINTED
- 12

MORTAR ON FURRING METAL LATH
- 13

1" THICK NOMINAL, THREE STEP STUCCO
- 14

SELF FURRING METAL LATH
- 15

60 MIL. TPO ROOFING ON RIGID INSULATION (R=20) ON ROOF DECK ON STRUCTURAL FRAME
- 16

6" METAL STUDS BUILT-UP HEADER BOX,
- 17

DARK BRONZE ANODIZED ALUM. FRAME FIXED WITH GLASS
- 18

INSULATING GLAZING , U= .50 SHGC = .50
- 19

5/8" 'X' TYPE GYP. BD, (BY TENANT)
- 20

'ENDURA' OUT SWING ADA ALUM. DOOR SHRESHOLD, COMMERCIAL GRADE, (OR EQUAL)
- 21

PROVIDE WEATHER SEAL AND DOOR SWEEP, SET THRESHOLD ON FULL BED OF SEALANT
- 22

CONTINUOUS FLASHING
- 23

'PEMKO' AIUM. DOOR TOP RAIN DRIP, 8" PASS EA. OF OPENING, TYP.
- 24

NOT USED
- 25

3'X7' HOLLOW METAL DOOR AND FRAME – PAINTED
- 26

CONCRETE SLAB ON GRADE, SEE STRUCT.
- 27

EXPANDABLE JOINT FILLER
- 28

CONTINUOUS VAPOR BARRIER ON COMPACTED DIRT , SEE STRUCTURAL DRAWINGS
- 29

REINF. CMU WALL SEE STRUCT.
- 30

TREATED 2X WOOD BLOCKING
- 31

CANT STRIP
- 32

CONTINUOUS GALV. METAL GUTTER CONNECTED TO 8"x8" DOWN SPOUT, THEN CONNECTED TO UNDER GROUND DRAINAGE SYSTEM
- 33

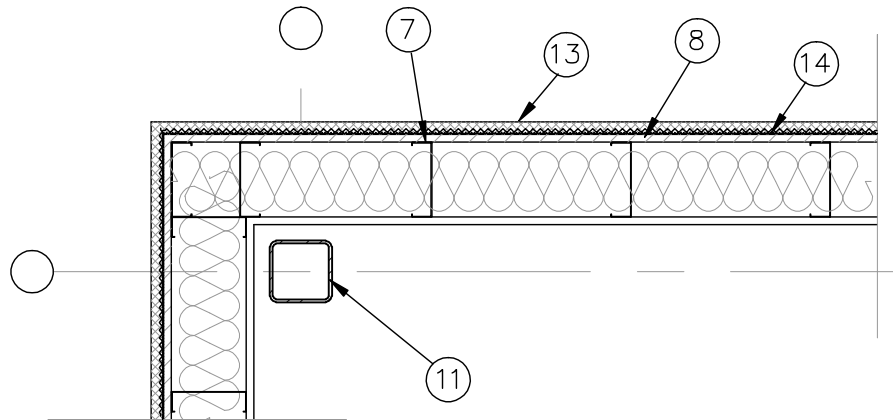
PREFINISHED 'R' PANEL ON SHEATHING
- 34

METAL STUD FRAME / BRACING TO FORM TOWER, RE: STRUCTURAL DRAWINGS
- 35

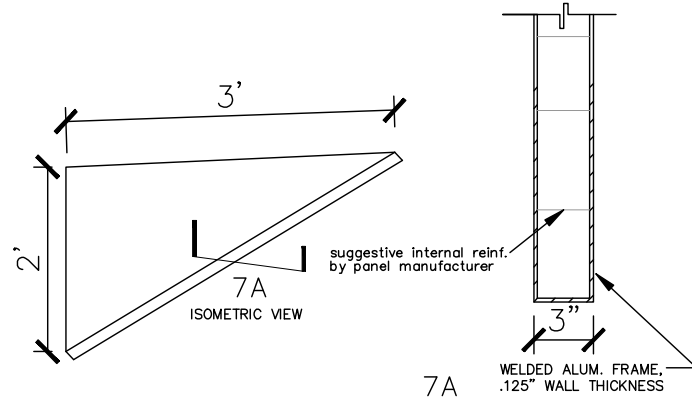
CONTINUOUS SEALANT (AND BACKER ROD WHEN SHOWN)
- 36

STOREFRONT DOOR
- 37

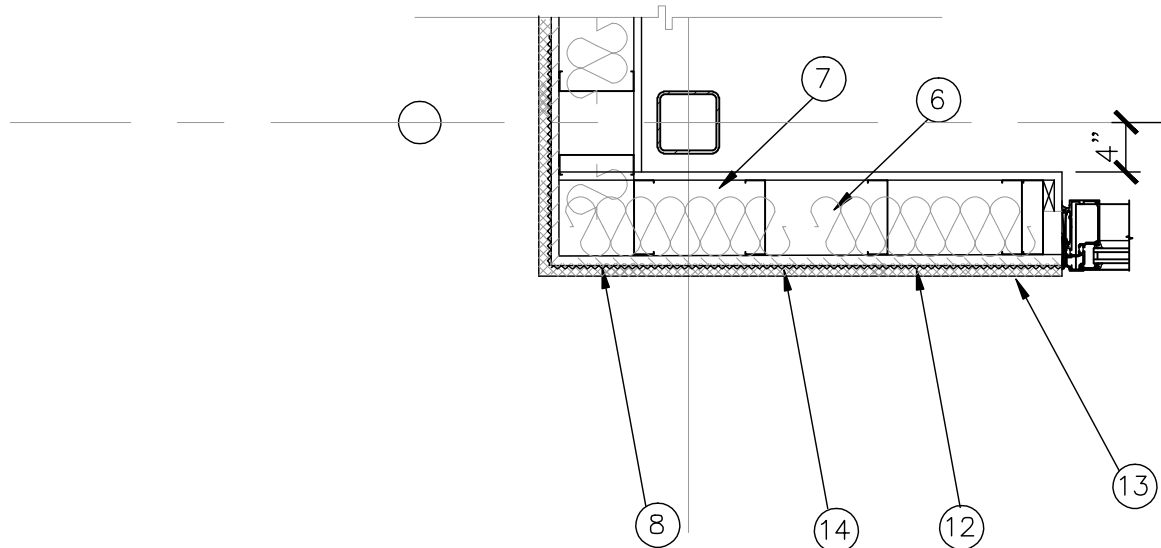
SURFACE MOUNT CONTINUOS STRIP LIGHT SEE ELECTRICAL



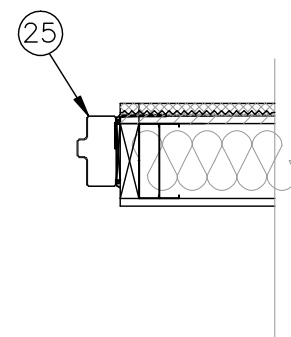
3 PLAN DETAIL
SCALE: 3/4"=1'-0"



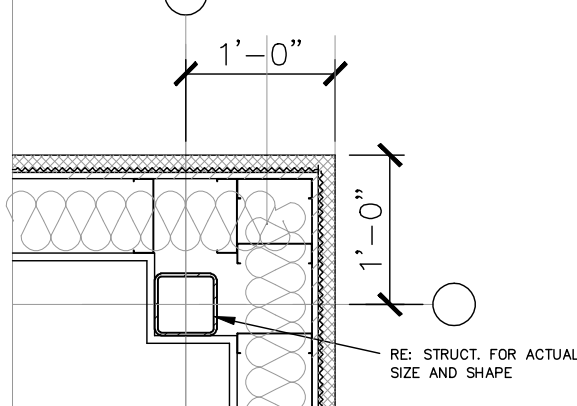
5 DETAIL
SCALE: NA



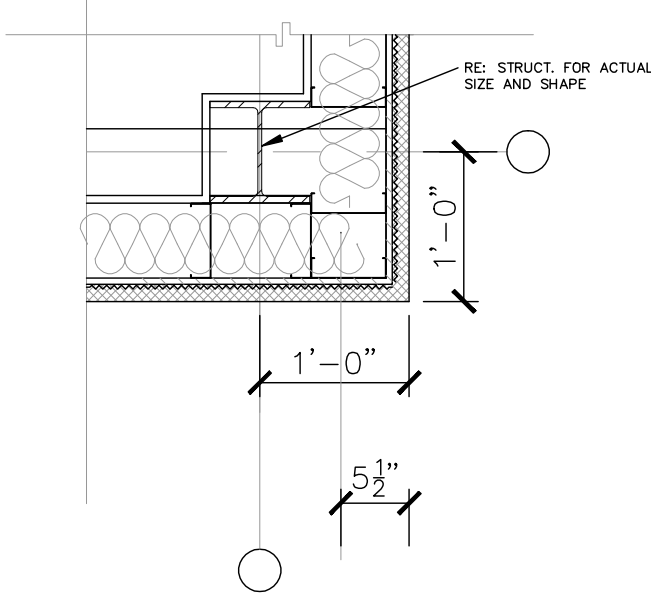
7 PLAN DETAIL
SCALE: 3/4"=1'-0"



4 PLAN DETAIL
SCALE: 3/4"=1'-0"



6 PLAN DETAIL
SCALE: 3/4"=1'-0"



8 PLAN DETAIL
SCALE: 3/4"=1'-0"

REVISIONS AND ISSUANCE		
NO.	DATE	DESCRIPTION
1	xx	ISSUE FOR PERMIT

SHOPPING CENTER OF STONE OAK
24272 Wilderness Oak (Shopping Center)
24278 Wilderness Oak (Child Care Center)
San Antonio, Texas 78258

this design / drawing are the property of JCC Architect, LLC. It is unlawful to copy or extract in any form unless it is authorized by JCC Architect, LLC.

Developer
AZEA Holdings, LLC
shehmir9@gmail.com
fmo@Epicmedicalbilling.com

Civil Engineer
KLove Engineering LLC
klove@kloveengineering.com

Landscape Architect
EVERGREEN Design Group
Rodney@evergreendesigngroup.com

Structural Engineer
Mission Engineering, Inc.
dzhuang@missioneng.com

MEP Engineers
chihntai.keng@gmail.com



JCC ARCHITECT, L.L.C.
TX Reg. Arch No. 09305
jc@jccarch.com

DRAWN BY JC

DATE 08012022

DRAWING TITLE

DETAILS

DRAWING NO.

A40

REVISIONS AND ISSUANCE		
NO.	DATE	DESCRIPTION
1	10/28/2022	ISSUE FOR PERMIT

SHOPPING CENTER OF STONE OAK
24272 Wilderness Oak (Shopping Center)
24278 Wilderness Oak (Child Care Center)
San Antonio, Texas 78258

This design / drawing are the property of JCC Architects, LLC. It is unlawful to copy or extract in any form unless it is authorized by JCC Architects, LLC.

Developer
AZEIA Holdings, LLC
shehmir9@gmail.com
fma@Epicmedicalbilling.com

Civil Engineer
Klove Engineering LLC
klove@kloveengineering.com

Landscape Architect
EVERGREEN Design Group
Rodney@evergreendesigngroup.com

Structural Engineer
Mission Engineering, Inc.
dzhuang@missioneng.com

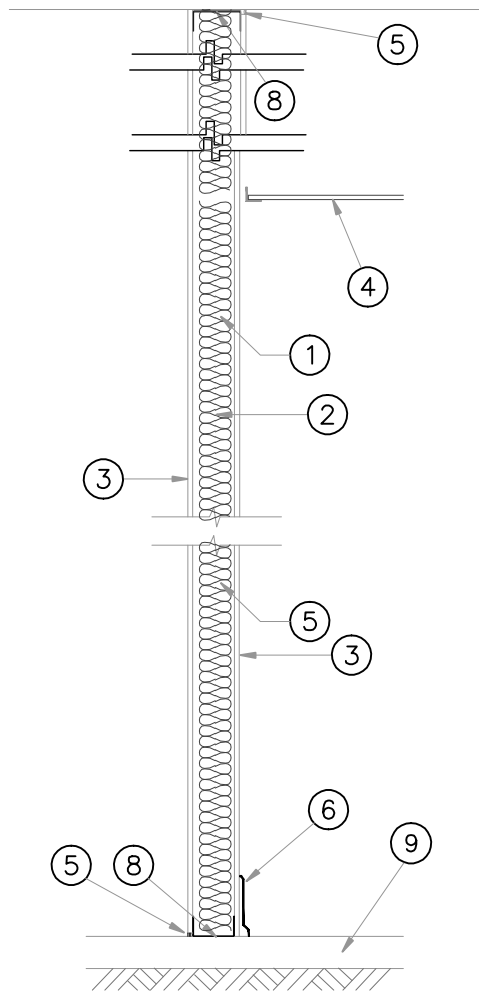
MEP Engineers
chihai.keng@gmail.com



JCC ARCHITECT,
TX Reg. Arch No. 93305
jc@jccarch.com

DRAWN BY	CHECKED BY
JC	JC
DATE	JOB NO.
08012022	stoneoak-1

DRAWING TITLE
SCHEDULES
DRAWING NO.
A50

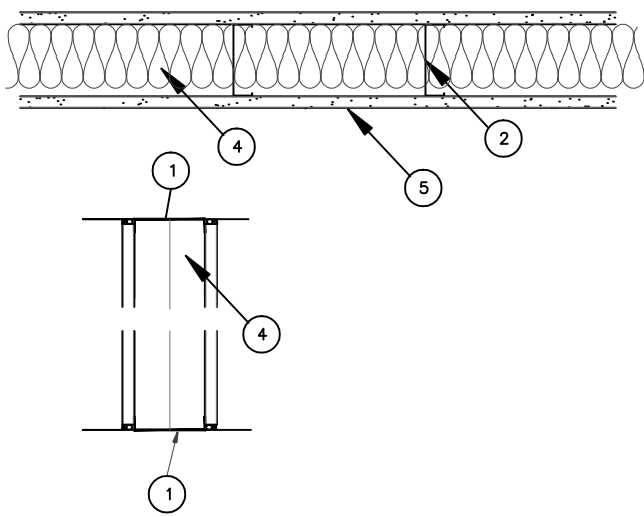


NOTES TO DRAWING:

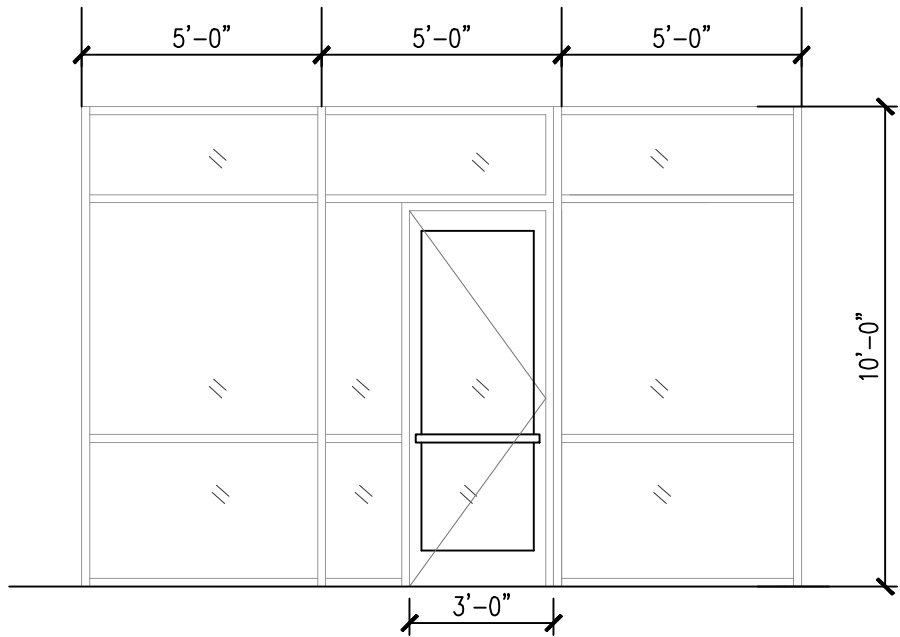
- 6" STUD @ 16" OC.
- BATT INSULATION BY FUTURE TENANT
- 5/8" TYPE "X" GYPSUM BOARD, USE WATER RESISTIVE (GREEN) BOARDS WHEN FACING PLUMBING, TYP. PAINTED OF OFFICE TAPE AND FLOAT ON FUTURE TENANT SIDE
- "ARMSTRONG" 2'x2' LAY IN ACOUSTICAL CEILING PANEL
- CONTINUOUS SEALANT
- 6" VINYL COVE BASE
- 6" METAL TRACK RUNNER SECURED AT CONC. FLOOR
- 6" METAL TRACK SECURED AT FLOOR DECK
- FLOOR SLAB

RESISTANCE RATINGS ANSI/UL263 (BXUV)- Continued
Design No. UA10
Nonbearing Wall Rating-1 HR.

1 FLOOR AND CEILING TRACK ~2-1/2 IN. WIDE BY 1 IN. DEEP CHANNEL, 25 MSG GALV STEEL WITH 5/16 BY 1/8 IN. FASTENERS SPACED 18 IN. OC.
2 AS AN ALTERNATE TO ITEM 1 CEILING RUNNER~25 MSG MIN GALV STEEL, WIDTH TO ACCOMMODATE STUD, WITH SUBR 4 IN. LEGS OFFSET AT MIDPOINT TO ACCOMMODATE WALL CLADDING THICKNESS. ATTACHED TO CEILING WITH FASTENERS SPACED 24 IN. OC. THE WALL CLADDING SHALL OVERLAP WALLBOARD 1-1/4 IN. MIN.
FIRE TREX CORP.
2. STEEL STUDS-2-1/2 IN. WIDE WITH 1-3/8 IN. LEGS, 1/4 IN. FOLDED BACK RETURN FLANGE IN LEGS. STUDS SPACED 24 IN. OC. 25 MSG GALV STEEL WITH 2 BY 1-1/2 IN. RECTANGULAR CONDUIT CUTOUTS SPACED NOT LESS THAN 6 IN. OC. STUDS 3/4 IN. LESS IN LENGTH THAN ASSEMBLY HEIGHT.
3. WALLBOARD GYPSUM-1/4 IN. THICK, 4 FT WIDE, ATTACHED TO STEEL STUDS AND FLOOR AND CEILING TRACKS WITH 0.116 IN. DIA. 1 IN. LONG SELF-DRILLING, SELF-TAPPING STEEL SCREWS, SPACED 12 IN. OC. JOINTS CENTERED OVER STUDS AND STAGGERED ON OPPOSITE SIDES OF WALL.
CELOTEX CORP.-TYPE SES OR D.
DOMTAR GYPSUM-TYPE 7.
GEORGA-PACIFIC CORP., GYPSUM DV.-TYPE GPFS5 OR GPFS-C.
PABCO GYPSUM-TYPE 3.
REPUBLIC GYPSUM CO.-TYPE RG-5.
STANDARD GYPSUM CORP.-TYPE SG-C.
TEMPLE-INLAND FOREST PRODUCTS CORP.-TYPE -4. UNITED STATES GYPSUM CO.-TYPE SOX
4. LAMINATION COMPOUND-USED TO BOND OUTER LAYER WALLBOARD (ITEM 5) TO INNER LAYER WALLBOARD (ITEM 3). CASEIN BASE, POWDER TYPE MIXED WITH WATER IN ACCORDANCE WITH INSTRUCTIONS SHOWN ON BAG. APPLIED TO THE BACK SURFACE OF THE OUTER LAYER OF WALLBOARD WITH CAULKING GUN OR APPLICATOR PRODUCING CONTINUOUS BEADS OF CEMENT ABOUT 3/4 IN. WIDE AND 1/2 IN. HIGH, SPACED 12 IN. O.C. AND 2 IN. FROM EDGES OF BOARDS.
5. WALLBOARD GYPSUM-1/2 IN. THICK, PLAIN OR VINYL FACED, 4 FT WIDE, ATTACHED TO INNER LAYER OF WALLBOARD WITH LAMINATING COMPOUND. JOINTS STAGGERED 24 IN. FROM INNER LAYER JOINTS. AFTER APPLYING ENDS OF BOARDS ATTACHED TO FLOOR AND CEILING TRACKS WITH 1-3/8 IN. LONG, 0.116 IN. DIA. SELF-DRILLING, SELF-TAPPING STEEL SCREWS SPACED HORIZONTALLY 8 IN. OC. AS AN OPTION, NOM 3/32 IN. THICK GYPSUM VENEER PLASTER MAY BE APPLIED TO THE ENTIRE SURFACE OF CLASSIFIED VENEER BASEBOARD. JOINTS REINFORCED.
BORAL GYPSUM INC.-TYPE BG-C OR DDDG3. CELOTEX CORP.-TYPE FRP OR SFP3.
CONTINENTAL GYPSUM COMPANY-TYPE CG-3 OR CG-C. DOMTAR GYPSUM-TYPE 5 OR C.
EAGLE-GYPSUM PRODUCTS-TYPE EGX-6 OR EG-C.
GEORGA-PACIFIC CORP., GYPSUM DV.-TYPE GPFS3 OR GPFS-C.
NATIONAL GYPSUM COCHARLOTTE, NG-TYPE FSK-1, FSK-G, FSW-1 OR FSW-G.
JAMES HARDIE GYPSUM-TYPES 111, V.
PABCO GYPSUM CO.-TYPES PG-3, PG-C.
REPUBLIC GYPSUM CO.-TYPE RG-3 OR RG-C.
STANDARD GYPSUM CORP.-TYPE SGC-1, SG-C OR SDC-G.
TEMPLE-INLAND FOREST PRODUCTS CORP.-TYPE 1, VPB-TYPE T OR TP-5.
BEARING THE UL CLASSIFICATION MARKING



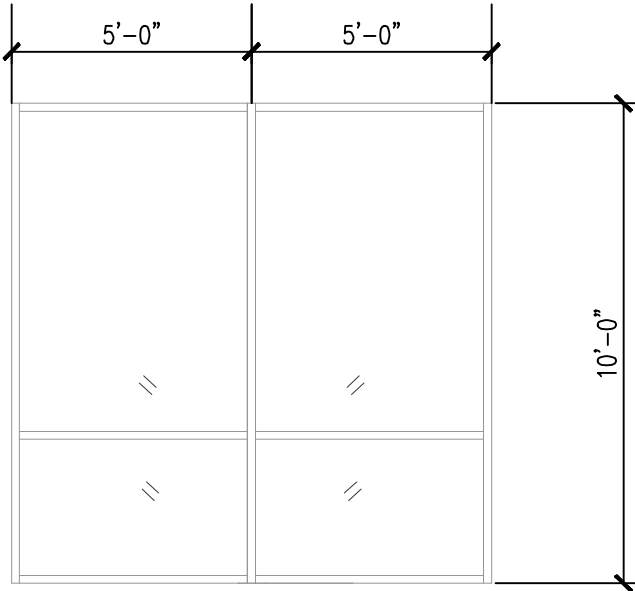
1 I HR PARTITON - P1
NTS



TYP. STOREFRONT

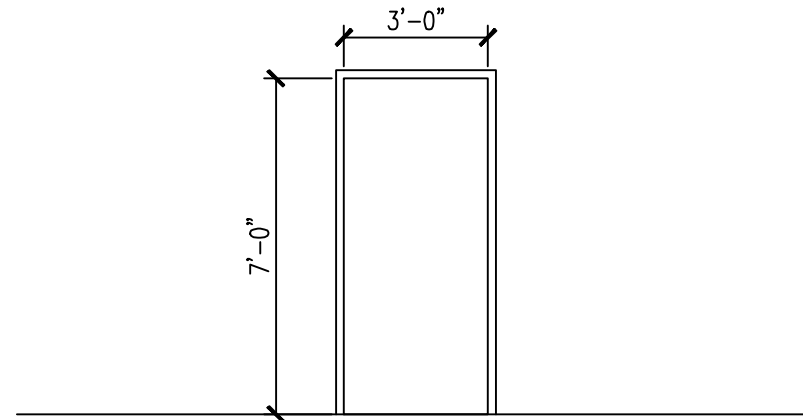
see plan and elevation
for applicable locations

ALL GLASS IN THIS PROJECT ARE TEMPERED, TYP.



TYP. STOREFRONT

see plan and elevation
for applicable locations



TYP. HOLLOW METAL DOOR AND
FRAME — PAINTED

2 DOOR AND HARDWARE
NTS

DOOR HARDWARE SCHEDULE (OR APPROVED EQUAL)

FOR ALL STOREFRONT DOOR

- 1EA PIVOT
- 1EA INT PIVOT
- 1EA EXIT DEVICE
- 1EA IC RIM CYLINDER
- 1EA OFFSET PULL
- 1EA CLOSER
- 1EA DROP PLATE
- 1EA THRESHOLD
- 1EA SWEEP

FOR ALL EXTERIOR HM DOOR

- 3EA HINGES
- 1EA EXIT DEVICE
- 1EA CLOSER
- 1EA THRESHOLD
- 1EA SWEEP

FOR EXTERIOR HM DOOR LABELED AS D1

- 3EA HINGES
- 1EA STORAGE LOCK
- 1EA CLOSER
- 1EA THRESHOLD
- 1EA SWEEP

FOR INTERIOR DOOR (REST ROOM IN THE
OFFICE, DOOR D2)

- 3EA HINGE
- 1EA PRIVACY
- 1EA CLOSER
- 1EA FLOOR STOP

3 DOOR AND HARDWARE
NTS