

ALL PROPERTIES ARE OWNER MANAGED AND STRATEGICALLY LOCATED MINUTES FROM A MAJOR INTERSTATE IN THE EAST BAY AND CENTRAL VALLEY.

**Right Space. Best Place.**

[www.cranbrookgroup.com](http://www.cranbrookgroup.com)

# ADAMS BUSINESS CENTER

[1965-1987 Adams Avenue & 428-538 McCormick Street, San Leandro, CA 94577](#)

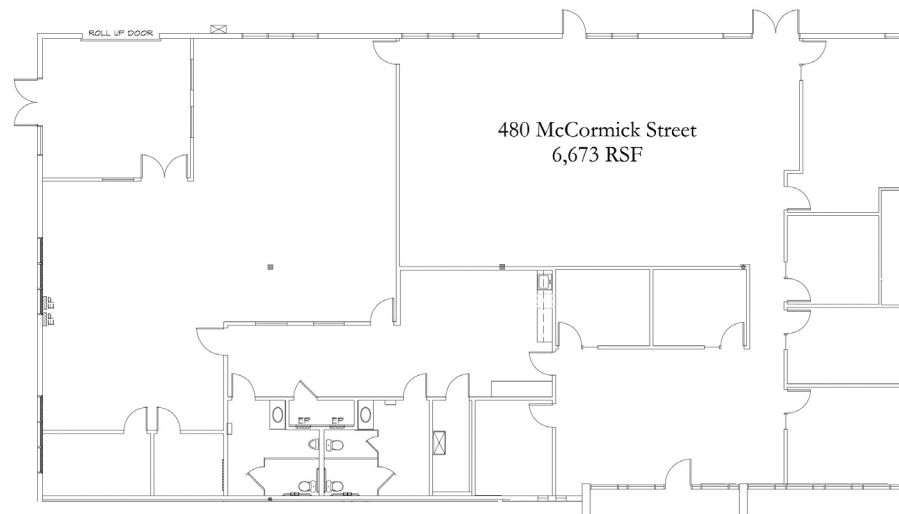


**SEE & LEARN MORE ...**

Go to [cranbrookgroup.com](http://cranbrookgroup.com) to view more photos and get more information about Adams Business Center and our company!

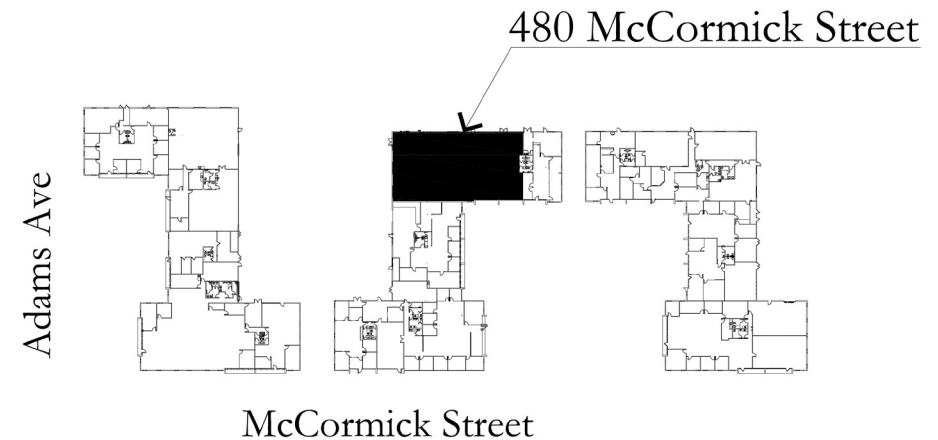
## SUITE 480 McCORMICK STREET

± 6,673 RENTABLE SQUARE FEET



## BUILDING KEY PLAN

AVAILABLE SUITE IN BLACK BELOW



*The information contained herein is based on reliable data, measurements and calculations. We have no reason to doubt its accuracy, but we do not guarantee it. All information should be verified prior to purchase or lease.*

For more information, please contact:

**NEWMARK**

**Zachary Smith**

Managing Director, Newmark  
(510) 300-0210 | [zachary.smith@nrmk.com](mailto:zachary.smith@nrmk.com)  
DRE #01860469



**Chris Wight**

Director of Leasing & Brokerage  
O: (209) 549-4960 x 117 | C: (209) 495-1383  
[cwight@cranbrookgroup.com](mailto:cwight@cranbrookgroup.com) | DRE #00935049