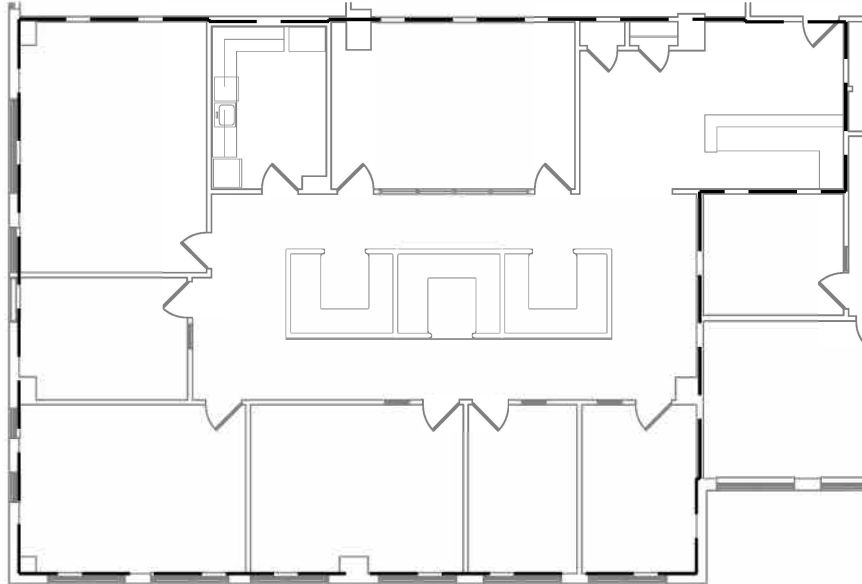


# Suite 320

Scale:  $\frac{1}{16}'' = 1'-0''$

Rentable Area = 3,801 sf



**MORFORD & DODDS** *realty*  
COMMERCIAL REAL ESTATE ADVISORS

**FORD3**  
ARCHITECTS, LLC  
32 Nassau Street | Princeton, New Jersey 08542  
609.924.0043 office | 609.924.2380 fax | office@ford3.com

**Note:**  
This drawing is for reference only. This drawing represents conditions at the time of the drawing date, and may not reflect subsequent tenant modifications.

Ford 3 Architects is not responsible for any subsequent modifications to these documents.

47 Hulfish Street  
Palmer Square Management  
Princeton, NJ

Drawn By
Checked By
Date 5/17/2016
Revisions
Project No PSM
Drawing Title
File Name 47 Hulfish - 3rd Floor.dwg

**320**