

# For Lease

14820 Carmenita Rd, Unit A  
Norwalk, CA 90650

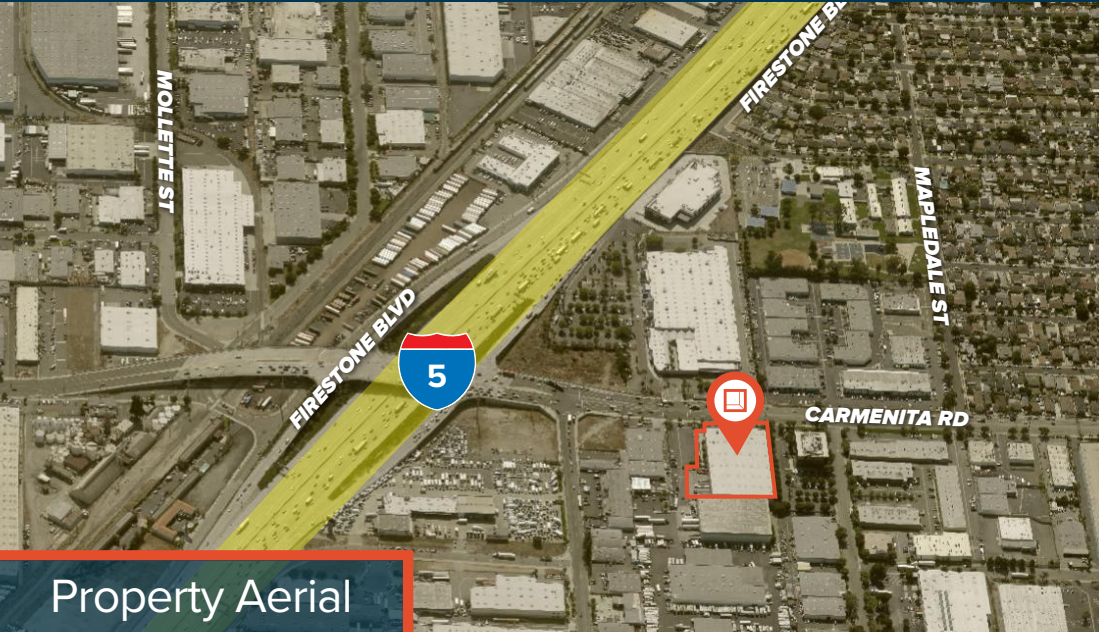


±64,036 SF

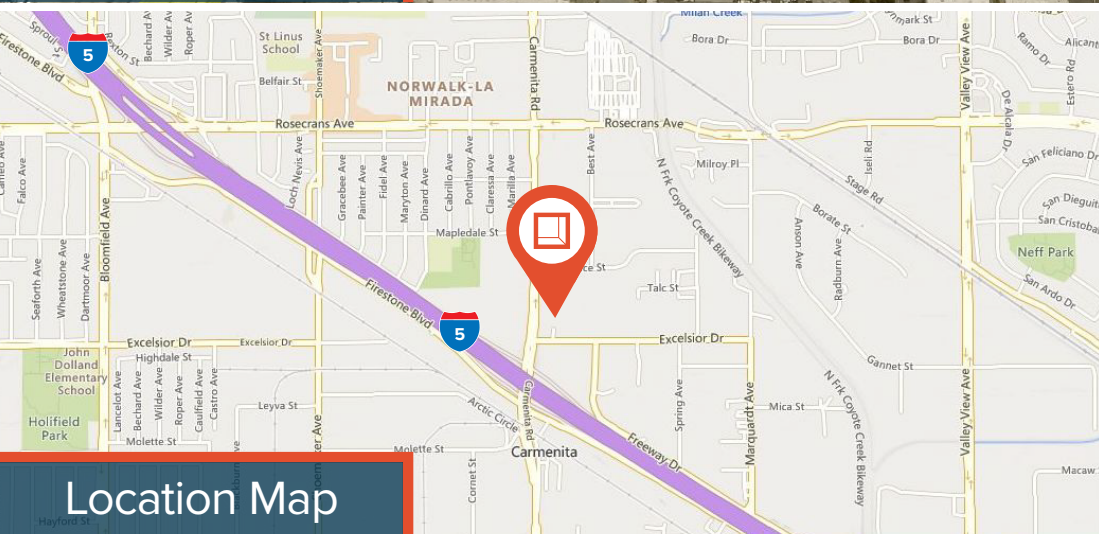
**TIM CRONIN, SIOR**  
Senior Vice President | LIC ID 00916418  
tcronin@lee-associates.com  
323.767.2088

**JAKE ARELLANO, GLS**  
Senior Vice President | LIC ID 02113094  
jarellano@lee-associates.com  
562.568.2088





Property Aerial



Location Map

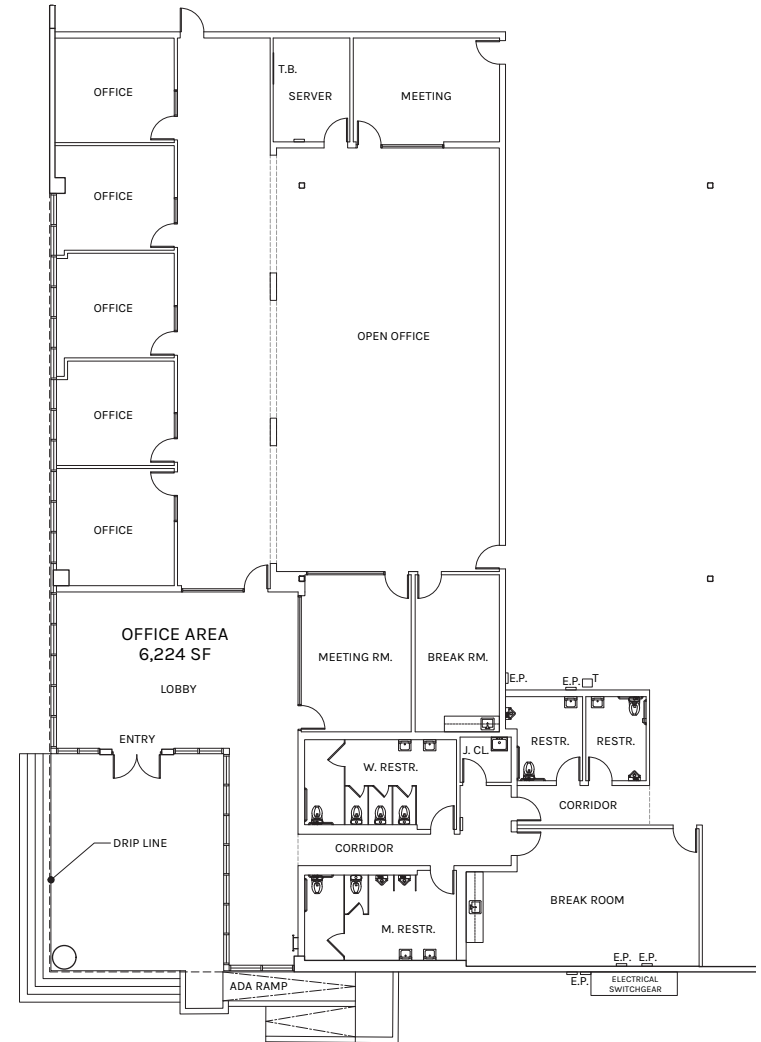
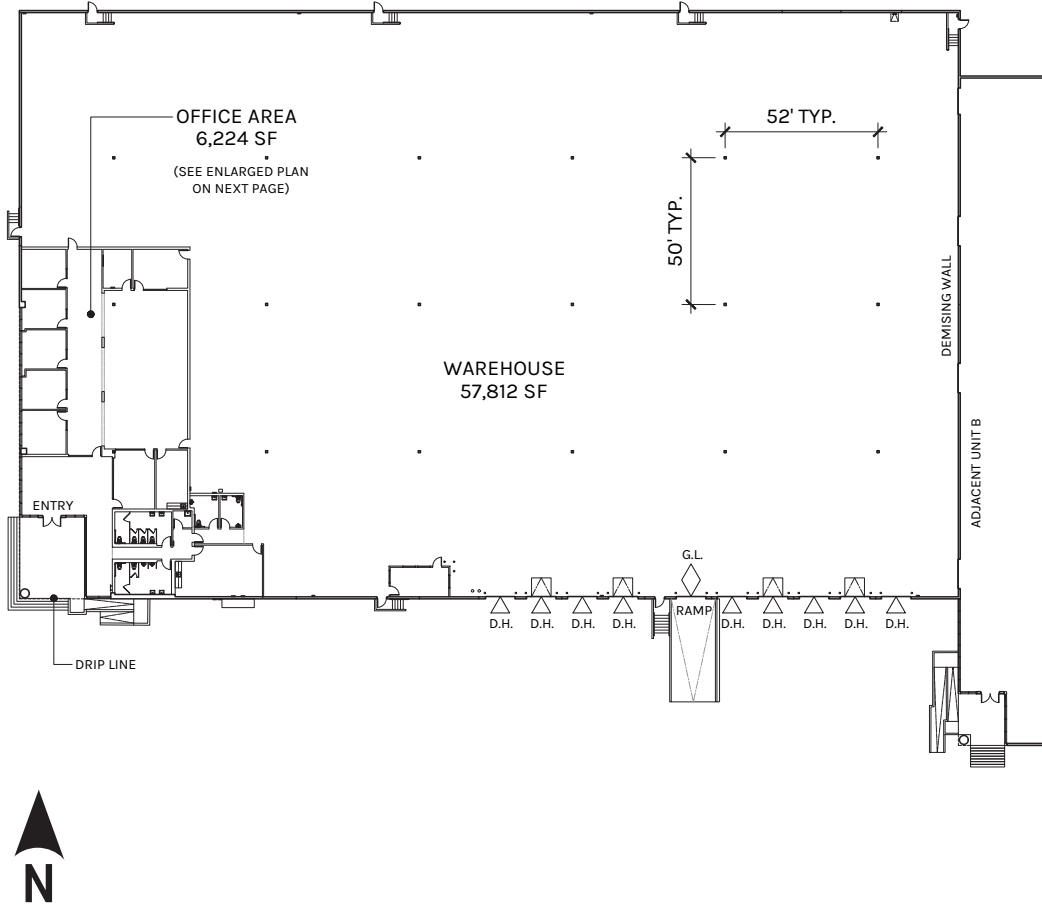
## Property Highlights

<b>Property Size</b>	±64,036 SF
<b>Office Size</b>	±6,224 SF
<b>Clear Height</b>	30'
<b>Docks / GL Ramp</b>	9 Docks 1 GL Ramp
<b>Freeway Access</b>	Immediate 5 Fwy Access
<b>Power</b>	Up to 600 Amps (Tenant to Verify)
<b>Sprinkler</b>	0.45/3000 (ESFR Upgrade Possible)

**TIM CRONIN, SIOR**  
Senior Vice President | LIC ID 00916418  
tcronin@lee-associates.com  
323.767.2088

**JAKE ARELLANO, GLS**  
Senior Vice President | LIC ID 02113094  
jarellano@lee-associates.com  
562.568.2088

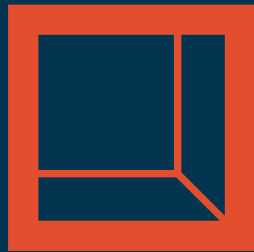




**TIM CRONIN, SIOR**  
Senior Vice President | LIC ID 00916418  
tcronin@lee-associates.com  
323.767.2088

**JAKE ARELLANO, GLS**  
Senior Vice President | LIC ID 02113094  
jarellano@lee-associates.com  
562.568.2088





**Rexford  
Industrial**

## Leasing Contacts

**TIM CRONIN**, SIOR  
Senior Vice President | LIC ID 00916418  
tcronin@lee-associates.com  
323.767.2088

**JAKE ARELLANO**, GLS  
Senior Vice President | LIC ID 02113094  
jarellano@lee-associates.com  
562.568.2088



Lee & Associates®- Industry, Inc.  
13181 Crossroads Pkwy, North, Suite 300  
City of Industry, CA 91746

P (562) 699-7500  
F (562) 695-3133

The information contained herein is obtained from sources believed to be reliable. However, we have not verified it and make no guarantees, warranties or representations as to the completeness or accuracy thereof. The presentation of this property is used for example and is submitted subject to errors, omissions, change of price or conditions, and is subject to prior sale, lease or withdrawal without notice.