

TREENA P L A Z A

10620 TREENA STREET / SAN DIEGO / CA 92131



Jones Lang LaSalle Brokerage, Inc. RE license #01856260

SCRIPPS RANCH'S PREMIER BUSINESS ADDRESS

Treena Plaza is a premier Class A office building in the heart of Scripps Ranch. This modern, three-story property offers exceptional visibility from the I-15 freeway, and features a host of on-site amenities, including a fitness center, conference facility, and unique outdoor recreational spaces. With its combination of professional environment and lifestyle perks, Treena Plaza provides an unparalleled business setting.



93,536 Square Feet



Newest Class A Office Building in Scripps Ranch (Constructed in 2008)



Premium I-15 Freeway Visibility



Building Top & Monument Signage Opportunities



Free Covered & Surface Parking Ratio of 4.0/1,000 SF



CONFERENCE CENTER

AMENITIES



On-site Gym with Showers and Lockers



Half-Court Basketball Court



Conference Center



Horseshoe Pit



Outdoor Dining Area

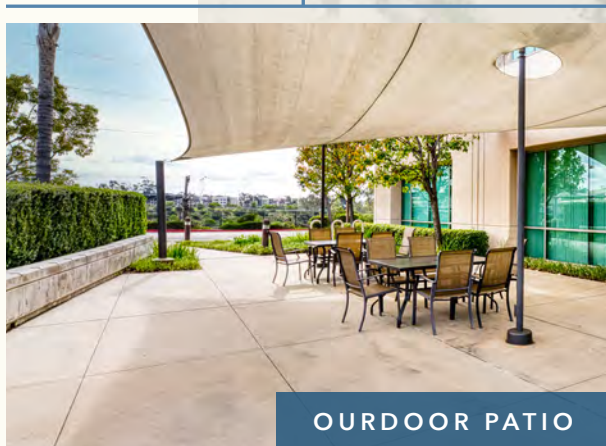


Putting Green



ON-SITE GYM

SITE PLAN



Suite 110

5,516 RSF

Prominent Double
Door Entry

Reception

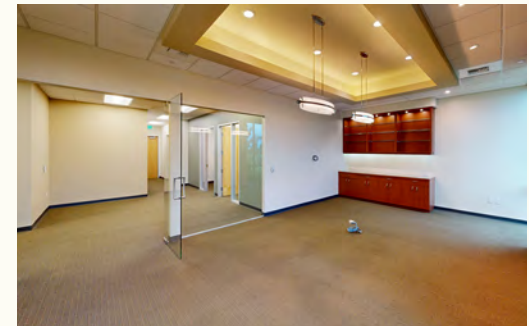
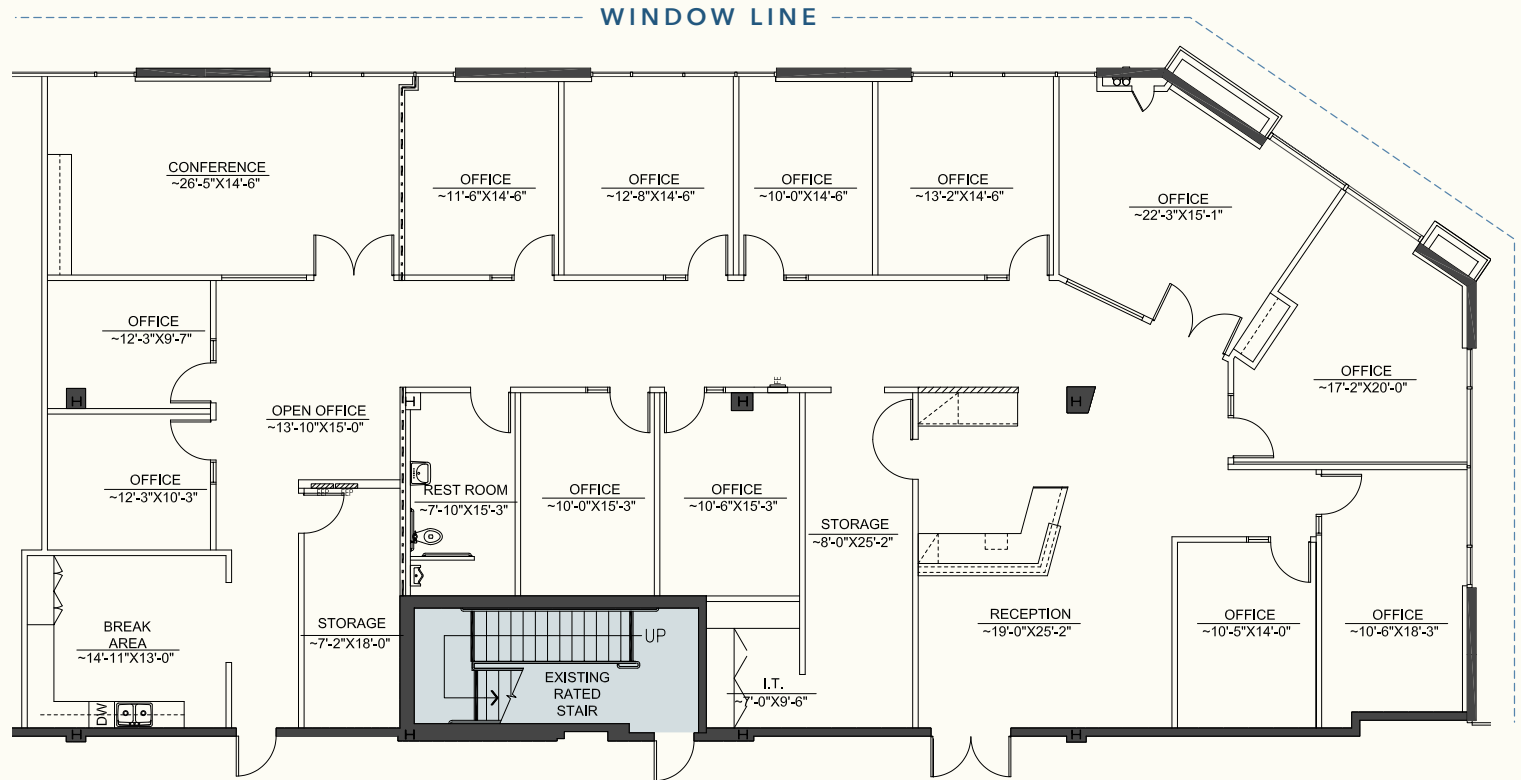
12 Private Offices

Conference Room

Break Room

2 Storage/IT Closets

Private In-Suite
Bathroom

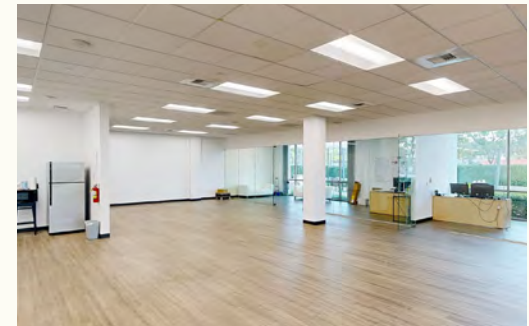
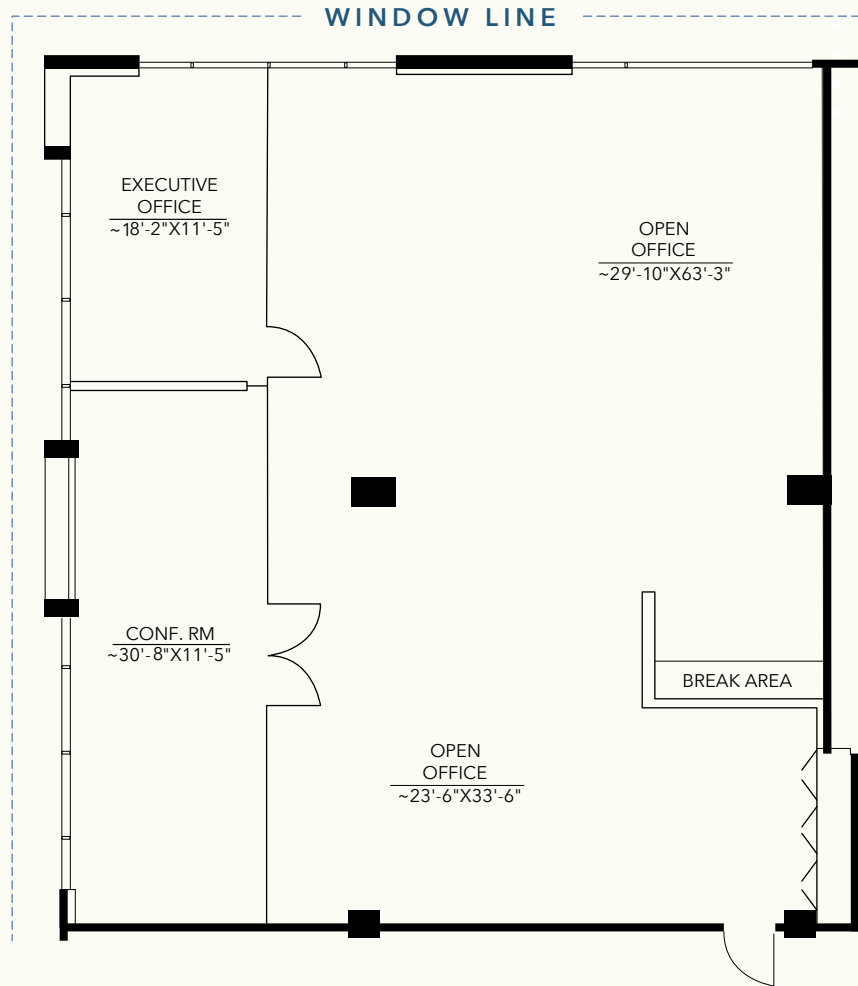


Suite

170

2,483 RSF

- 1 Large Conference Room
- 1 Executive Office
- Open Office Area
- Break Area



AREA AMENITIES

MIRA MESA

MIRA MESA BOULEVARD

BANK OF AMERICA

CVS *Jersey Mike's*
Smart & Final

Starbucks *PLAYERS TOP CHICKEN*
PNC *rubio's*

ROSS **OLD NAVY**
DRESS FOR LESS

Junction *Deccan Bites* *Starbucks*
BAR & GRILL

LITTLE INDIA

MIRAMAR ROAD

ON THE BORDER *Panera*
MEXICAN GRILL CANTINA BREAD
BARNES & NOBLE

TREENA ST



TREENA
PLAZA

H

JUNESHINE

SHABU-WORKS ALL YOU CAN EAT
Board & Brew
Sharetea *POKE HOUSE* *TRADER JOE'S*
KAPPA SUSHI *RUMBLE* **CYCLEBAR**

everbowl *BREAKFAST REPUBLIC*
CRAFT SUPERFOOD CALIFORNIA
Himalayan Grill Restaurant

LAKE MIRAMAR

SCRIPPS LAKE DRIVE

SCRIPPS MIRAMAR RANCH

POPPY BANK **VONS**
CHASE **WELLS FARGO**



TREENA P L A Z A

TIM OLSON

+1 858 410 1253
tim.olson@jll.com
RE License #01364117

GREG MOORE

+1 858 410 6367
greg.moore@jll.com
RE License #02068852

CARLY ROSS

+1 858 352 2911
carly.ross@jll.com
RE License #02157346

Although information has been obtained from sources deemed reliable, neither Owner nor JLL makes any guarantees, warranties or representations, express or implied, as to the completeness or accuracy as to the information contained herein. Any projections, opinions, assumptions or estimates used are for example only. There may be differences between projected and actual results, and those differences may be material. The Property may be withdrawn without notice. Neither Owner nor JLL accepts any liability for any loss or damage suffered by any party resulting from reliance on this information. If the recipient of this information has signed a confidentiality agreement regarding this matter, this information is subject to the terms of that agreement. ©2025 Jones Lang LaSalle IP, Inc. All rights reserved.

