

For Lease

Move-In Ready Office Space

1,575 - 3,528 SF | Contact Broker for Lease Rates



1404-1436 North Ronald Reagan Blvd

Longwood, Florida 32750

Property Highlights

- Single story, four building office park with strong curb appeal
- Frontage and visibility on Ronald Reagan Blvd / SR 427
- Flexible office layouts with move in ready options
- Ideal for medical and professional office users
- Convenient access to SR 434, US Hwy 17-92, I-4, Lake Mary, Longwood, and Altamonte Springs
- Dense surrounding residential and daytime population
- Parking ratio of approximately 4/1,000 SF
- Professionally managed and locally owned
- Monument and building signage available

AVAILABLE SPACES

Space	Lease Rate	Size (SF)
1404 N Ronald Reagan	Contact Broker	3,528
1414 N Ronald Reagan, Ste 1220	Contact Broker	1,575
1424 N Ronald Reagan, Ste 1320	Contact Broker	1,575



For more information

Stian Funk

O: 407 949 0747
sfunk@realvest.com

Property Photos



1404-1436 North Ronald Reagan Blvd



1404 North Ronald Reagan Blvd



1414 North Ronald Reagan Blvd



1424 North Ronald Reagan Blvd



1436 North Ronald Reagan Blvd

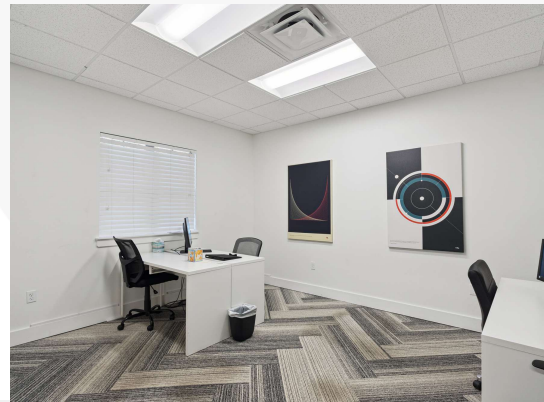
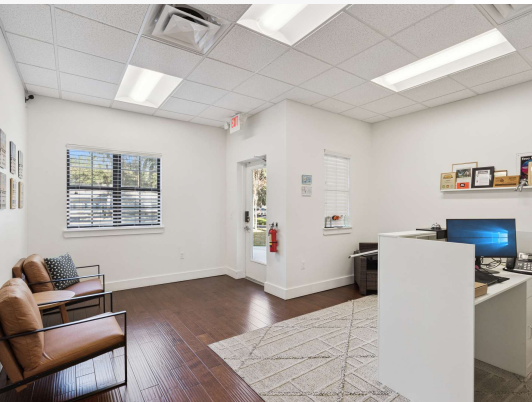
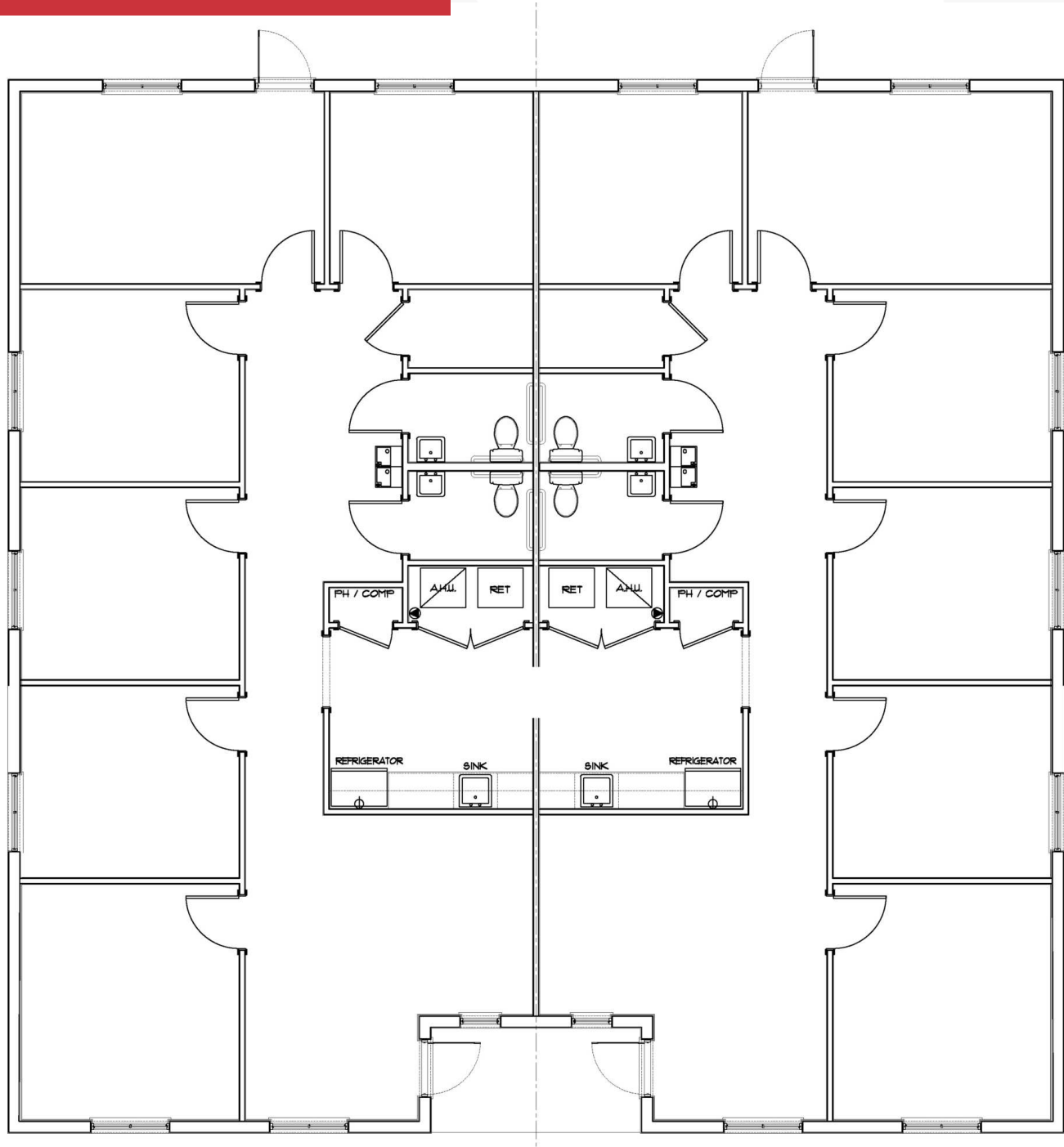
Available Spaces



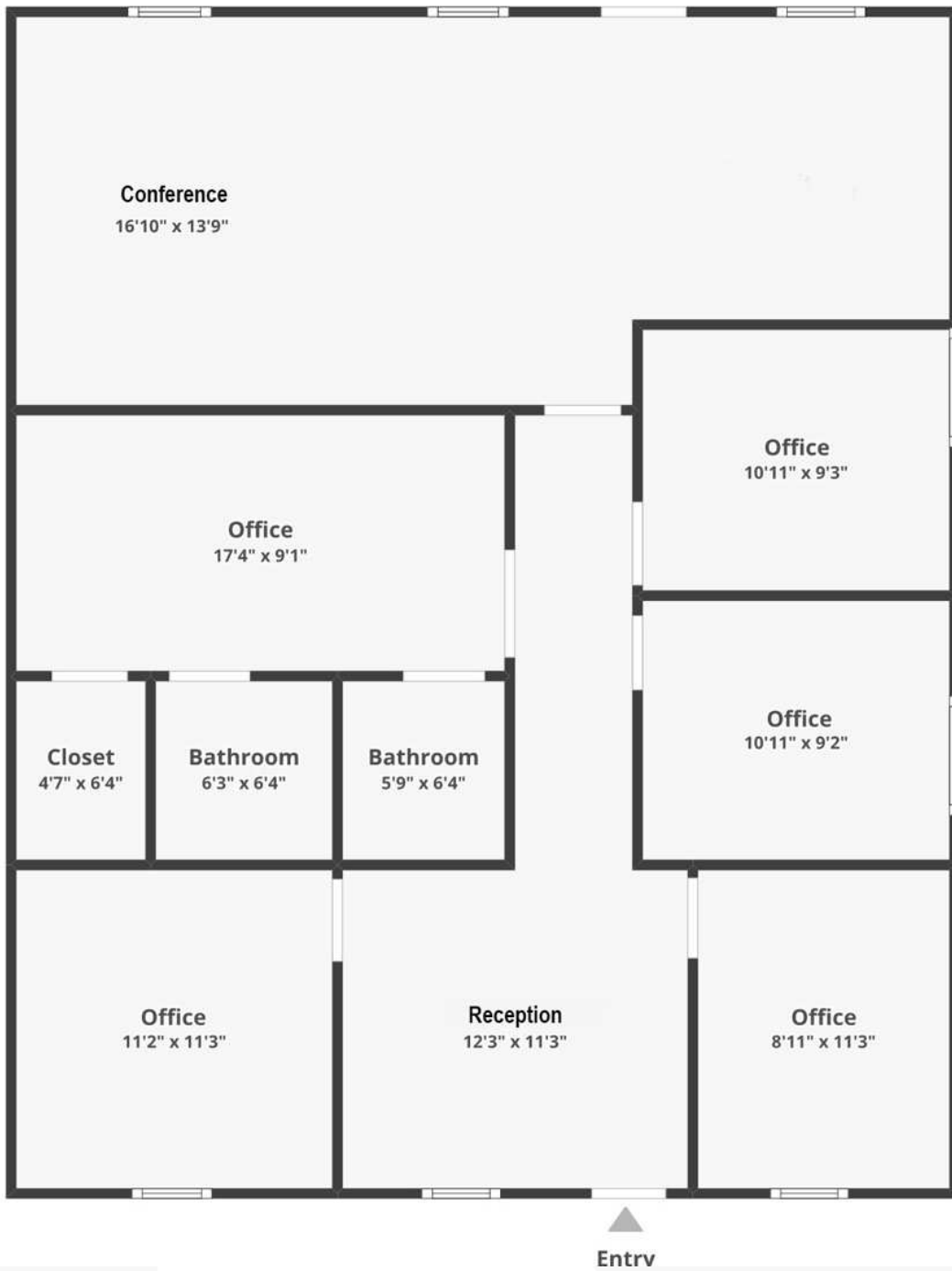
AVAILABLE SPACES

SUITE	SIZE (SF)	LEASE TYPE	LEASE RATE	DESCRIPTION
1404 North Ronald Reagan Blvd	3,528 SF	NNN	Contact Broker	Available Now
1414 North Ronald Reagan Blvd, Ste 1220	1,575 SF	NNN	Contact Broker	Available Now
1424 North Ronald Reagan Blvd, Ste 1320	1,575 SF	NNN	Contact Broker	Available Now

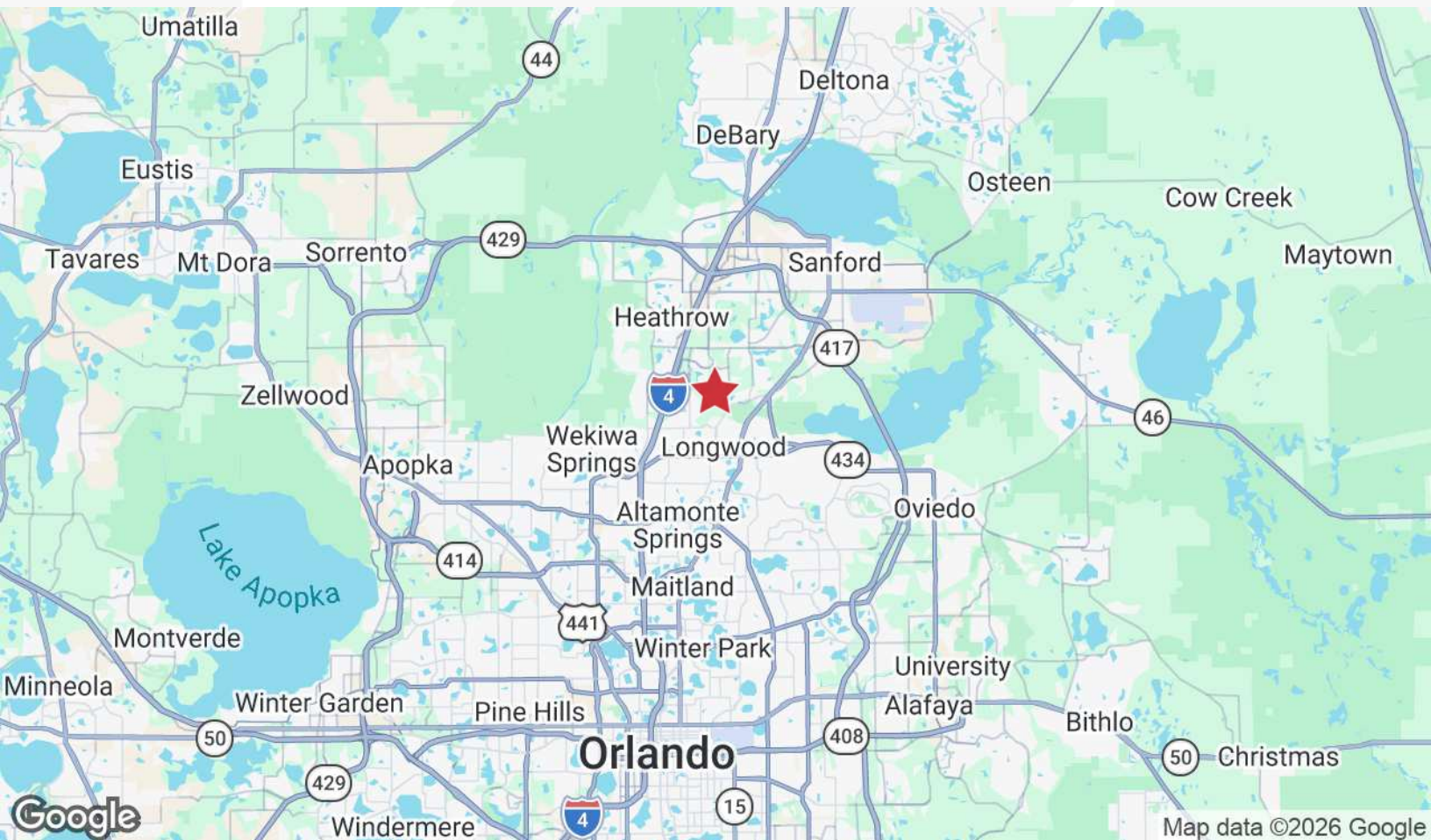
1404 N Ronald Reagan Blvd -
3,528± SF



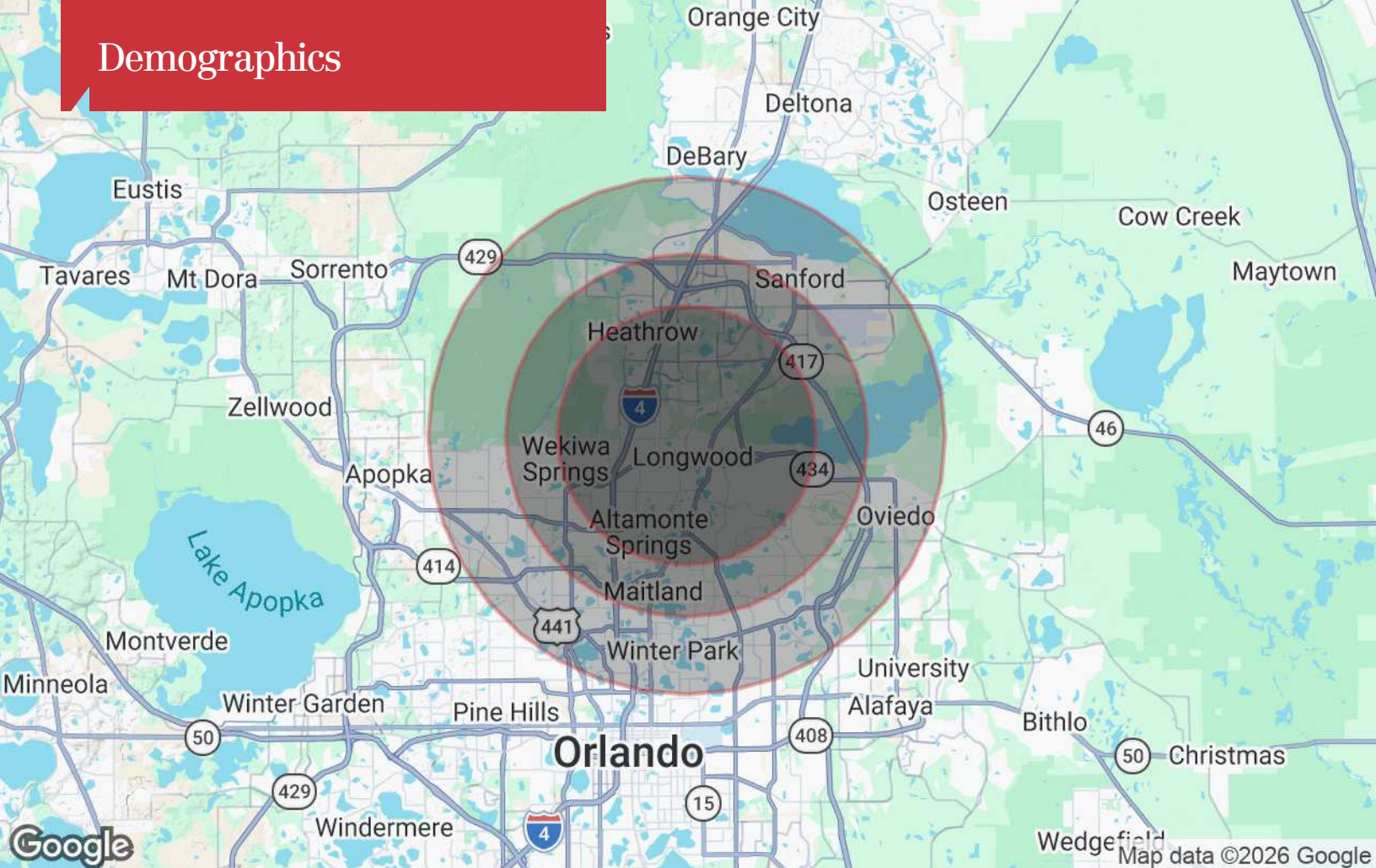
1424 N Ronald Reagan Blvd -
Ste 1320 - 1,575± SF



Location Maps



Demographics



	5 Miles	7 Miles	10 Miles
Population			
TOTAL POPULATION	186,229	346,773	607,817
MEDIAN AGE	41.5	41.1	40.2
MEDIAN AGE (MALE)	40.6	40.1	39.0
MEDIAN AGE (FEMALE)	42.4	42.1	41.3
Households & Income			
TOTAL HOUSEHOLDS	76,394	141,752	241,903
# OF PERSONS PER HH	2.4	2.4	2.5
AVERAGE HH INCOME	\$103,982	\$109,882	\$110,619
AVERAGE HOUSE VALUE	\$370,224	\$391,784	\$410,205

* Demographic data derived from 2020 ACS - US Census