

2617

HALEY ST.

BAKERSFIELD, CA

**FOR LEASE
OR SALE**

AMANDA BROCK
abrock@lee-associates.com
D 661.747.7467
CalDRE: #01517492

CHRIS MCKENZIE
cmckenzie@lee-re.com
D 818.933.0337
CalDRE: #01984899

 **LEE &
ASSOCIATES**
COMMERCIAL REAL ESTATE SERVICES
CENTRAL CALIFORNIA

All information furnished regarding property for sale, rental or financing is from sources deemed reliable, but no warranty or representation is made to the accuracy thereof and same is submitted to errors, omissions, change of price, rental or other conditions prior to sale, lease or financing or withdrawal without notice. No liability of any kind is to be imposed on the broker herein.

PROPERTY OVERVIEW

2617 Haley Street is a 1-story 3,275 square foot freestanding restaurant building on approximately .73 acres, formerly occupied by Farmer Boys Restaurant. The property features a drive-thru and outdoor eating area. The subject is easily accessed by Highway 178 via Haley Street.

OFFERING PRICE:	Contact Listing Agent
LEASE RATE:	Negotiable
LEASE TERM:	Negotiable
AVAILABLE:	Now
BLDG SIZE:	+/-3,275 SF
LOT SIZE:	+/-31,799 SF
PARKING:	46 stalls
ZONING:	C-2
APN:	126-020-60



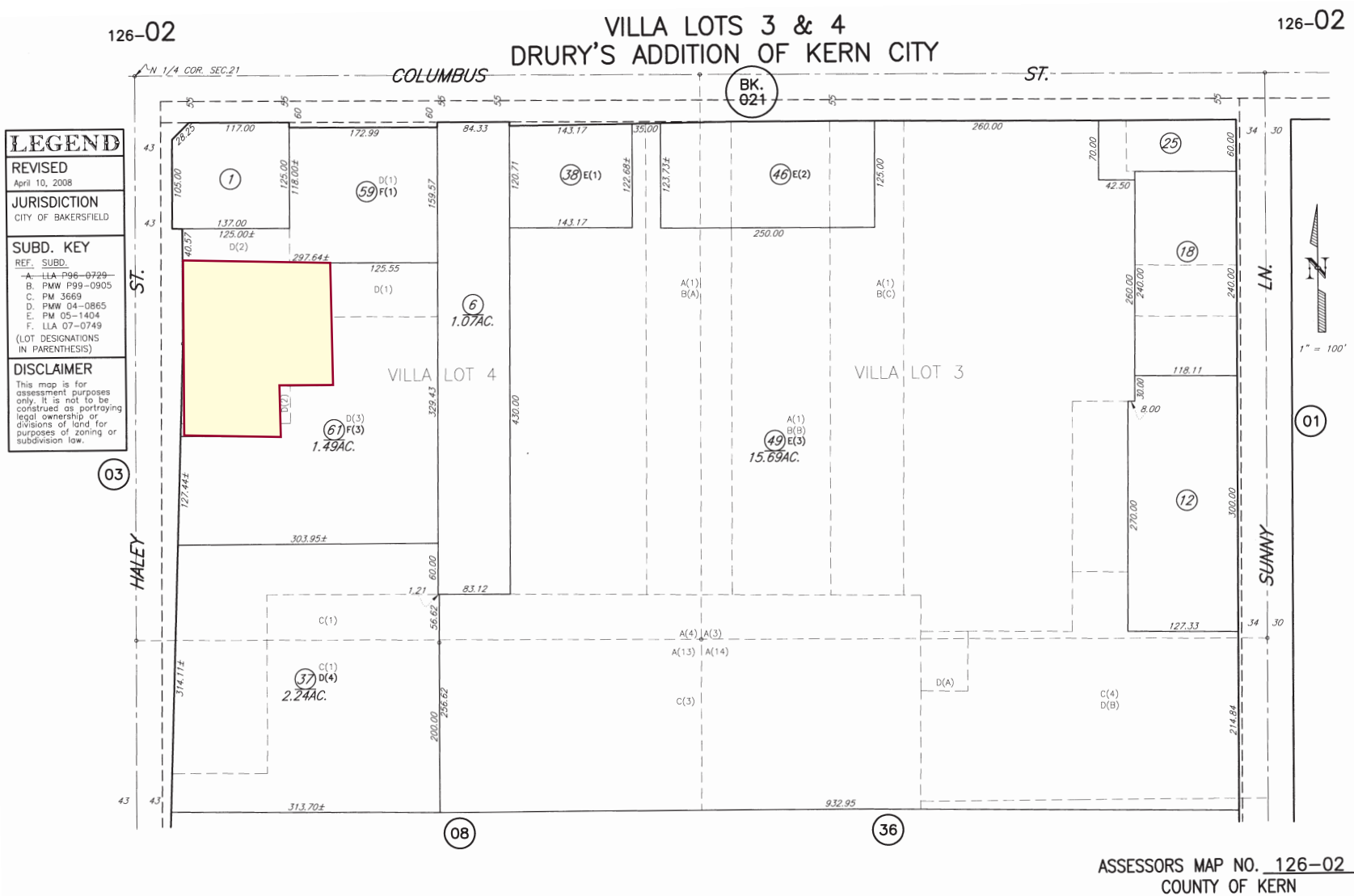
AMANDA BROCK
abrock@lee-associates.com
D 661.747.7467
CalDRE: #01517492

CHRIS MCKENZIE
cmckenzie@lee-re.com
D 818.933.0337
CalDRE: #01984899

LEE & ASSOCIATES
COMMERCIAL REAL ESTATE SERVICES
CENTRAL CALIFORNIA

All information furnished regarding property for sale, rental or financing is from sources deemed reliable, but no warranty or representation is made to the accuracy thereof and same is submitted to errors, omissions, change of price, rental or other conditions prior to sale, lease or financing or withdrawal without notice. No liability of any kind is to be imposed on the broker herein.

TAX MAP



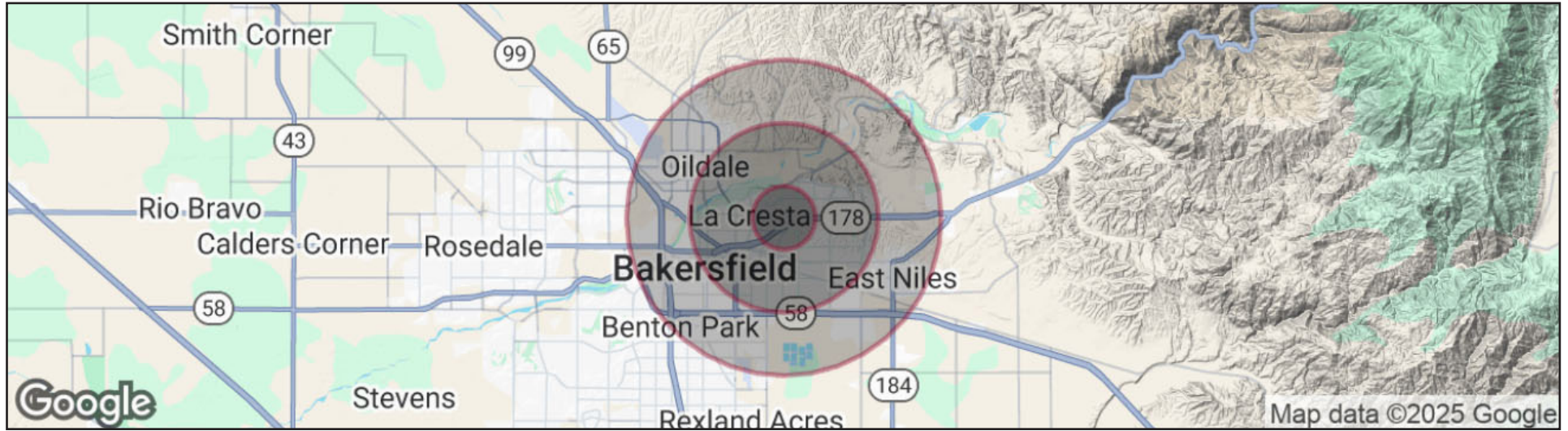
All information furnished regarding property for sale, rental or financing is from sources deemed reliable, but no warranty or representation is made to the accuracy thereof and same is submitted to errors, omissions, change of price, rental or other conditions prior to sale, lease or financing or withdrawal without notice. No liability of any kind is to be imposed on the broker herein.

RETAIL MAP



All information furnished regarding property for sale, rental or financing is from sources deemed reliable, but no warranty or representation is made to the accuracy thereof and same is submitted to errors, omissions, change of price, rental or other conditions prior to sale, lease or financing or withdrawal without notice. No liability of any kind is to be imposed on the broker herein.

DEMOGRAPHICS



RADIUS DEMOGRAPHICS	1 MILE	3 MILES	5 MILES
POPULATION			
Total Population	22,559	116,898	240,053
Average Age	34	34	34
Average Age (Male)	33	33	33
Average Age (Female)	35	35	35
HOUSEHOLDS & INCOME			
Total Households	6,731	36,177	75,634
# of Persons per HH	3.4	3.2	3.2
Average HH Income	\$64,748	\$64,438	\$64,814
Average Hosue Value	\$386,001	\$305,083	\$290,215

Demographics data derived from AlphaMap

All information furnished regarding property for sale, rental or financing is from sources deemed reliable, but no warranty or representation is made to the accuracy thereof and same is submitted to errors, omissions, change of price, rental or other conditions prior to sale, lease or financing or withdrawal without notice. No liability of any kind is to be imposed on the broker herein.



COMMERCIAL REAL ESTATE SERVICES

LOCAL EXPERTISE. INTERNATIONAL REACH. WORLD CLASS.

Lee & Associates, the largest broker-owned firm in North America, has been providing seamless, consistent execution and value-driven market-to-market services for our clients since 1979.

Our real estate services are tailored to exceed the needs of our local, national, and international clients by combining the latest technology, resources, and market intelligence with over 40 years of expertise to optimize results.

AMANDA BROCK

661.747.7467

abrock@lee-associates.com

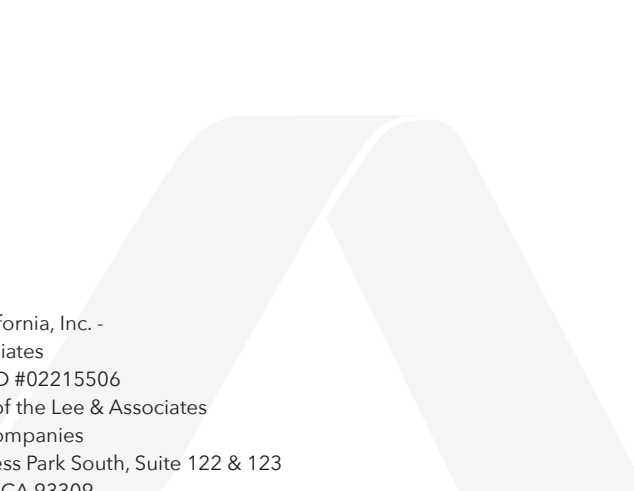
License ID# 01517492

CHRIS MCKENZIE

818.933.0337

cmckenzie@lee-re.com

License ID# 01984899



Central California, Inc. -
Lee & Associates
Corporate ID #02215506
A Member of the Lee & Associates
Group of Companies
5401 Business Park South, Suite 122 & 123
Bakersfield, CA 93309

All information furnished regarding property for sale, rental or financing is from sources deemed reliable, but no warranty or representation is made to the accuracy thereof and same is submitted to errors, omissions, change of price, rental or other conditions prior to sale, lease or financing or withdrawal without notice. No liability of any kind is to be imposed on the broker herein.

