

220 CLAY AVENUE
LYNDHURST, NJ

40,800 SQ. FT.
DIVISIBLE TO 28,800 SQ. FT.



LONG OR SHORT
TERM SUBLEASE

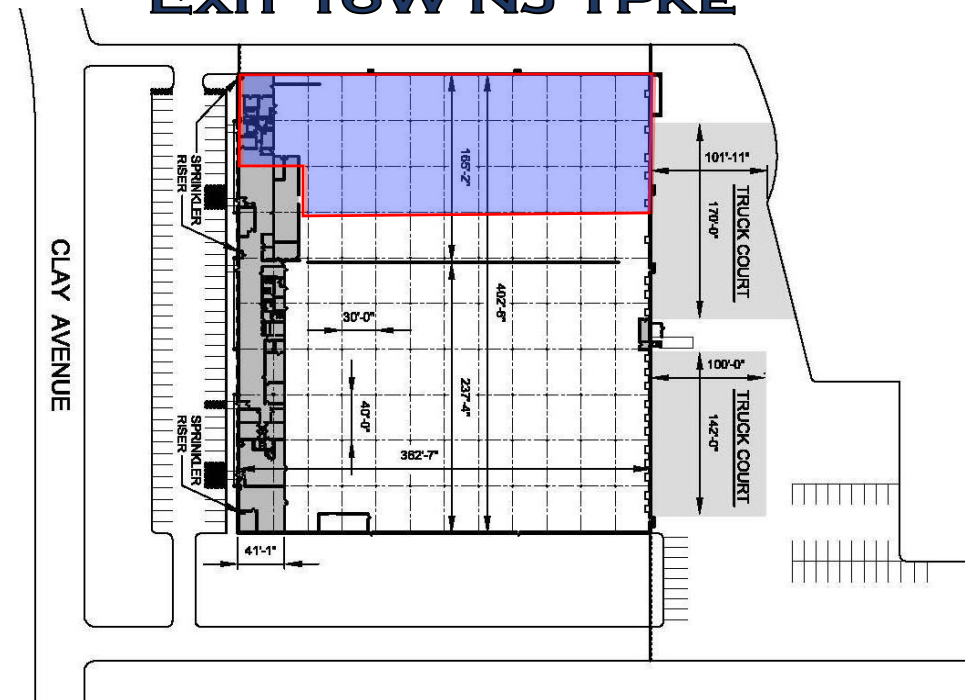
PUBLIC TRANSPORTATION AT DOOR

UNITED
REALTY ADVISORS, LLC
LICENSED REAL ESTATE BROKERS

JOHN FRIEDLAND **MARK TANNEN**
201 - 981 - 2745 **201 - 913 - 2075**
JOHN@URA-NJ.COM **MARK@URA-NJ.COM**

- ◆ UP TO 3,200 SQ. FT. OFFICES
- ◆ 20' CEILING HEIGHT
- ◆ 5 TAILBOARD LOADING DOCKS
- ◆ 30' X 40' COLUMN SPAN

**10 MINUTES TO LINCOLN TUNNEL
AT ROUTES 17, 3 AND
EXIT 16W NJ TPKE**



No warranty or representation, express or implied is made as to the accuracy of the information, including zoning, environmental, structural and sprinkler matters, and same is submitted subject to errors, omissions, change of price, rental or other conditions, withdrawal without notice, and to any special listing conditions imposed by the principal. Prospective purchasers/tenants are urged to conduct whatever investigation they, their attorneys and advisors deem necessary about the property, including but not limited to the above items.

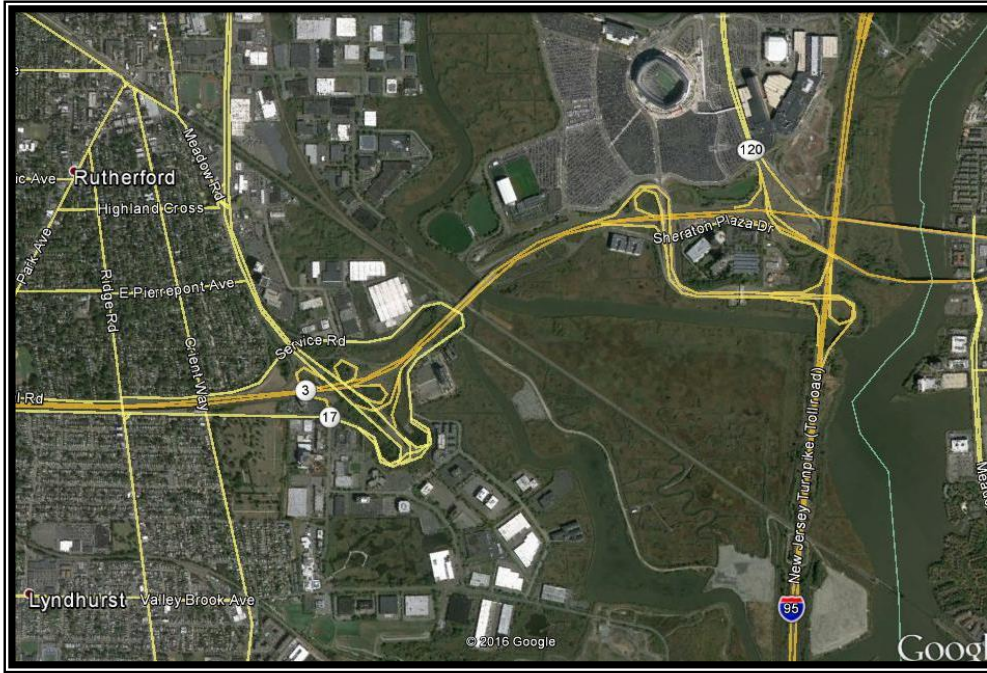
UNITED
REALTY ADVISORS, LLC
LICENSED REAL ESTATE BROKERS

220 CLAY AVENUE

LYNDHURST, NJ

40,800 SQ. FT.

DIVISIBLE TO 28,800 SQ. FT.



LONG OR SHORT TERM SUBLEASE

- ◆ UP TO 3,200 SQ. FT. OFFICES
- ◆ 20' CEILING HEIGHT
- ◆ 5 TAILBOARD LOADING DOCKS
- ◆ 30' X 40' COLUMN SPAN

PUBLIC TRANSPORTION AT DOOR

**10 MINUTES TO LINCOLN TUNNEL
AT ROUTES 3, 17 AND NJ TPKE**

UNITED
REALTY ADVISORS, LLC
LICENSED REAL ESTATE BROKERS

JOHN FRIEDLAND
201 - 981 - 2745
JOHN@URA-NJ.COM

MARK TANNEN
201 - 913 - 2075
MARK@URA-NJ.COM

No warranty or representation, express or implied is made as to the accuracy of the information, including zoning, environmental, structural and sprinkler matters, and same is submitted subject to errors, omissions, change of price, rental or other conditions, withdrawal without notice, and to any special listing conditions imposed by the principal. Prospective purchasers/tenants are urged to conduct whatever investigation they, their attorneys and advisors deem necessary about the property, including but not limited to the above items.

UNITED
REALTY ADVISORS, LLC
LICENSED REAL ESTATE BROKERS