

Compton

For Rent
**22-24 Cowper Street
Shoreditch EC2**



Exceptional, newly refurbished
Grade A office space in the heart of
Shoreditch

For Rent

22-24 Cowper Street
Shoreditch EC2A

Size

1,615 - 5,241 Ft²

Rent

£52.50 - £72.50 per sq ft

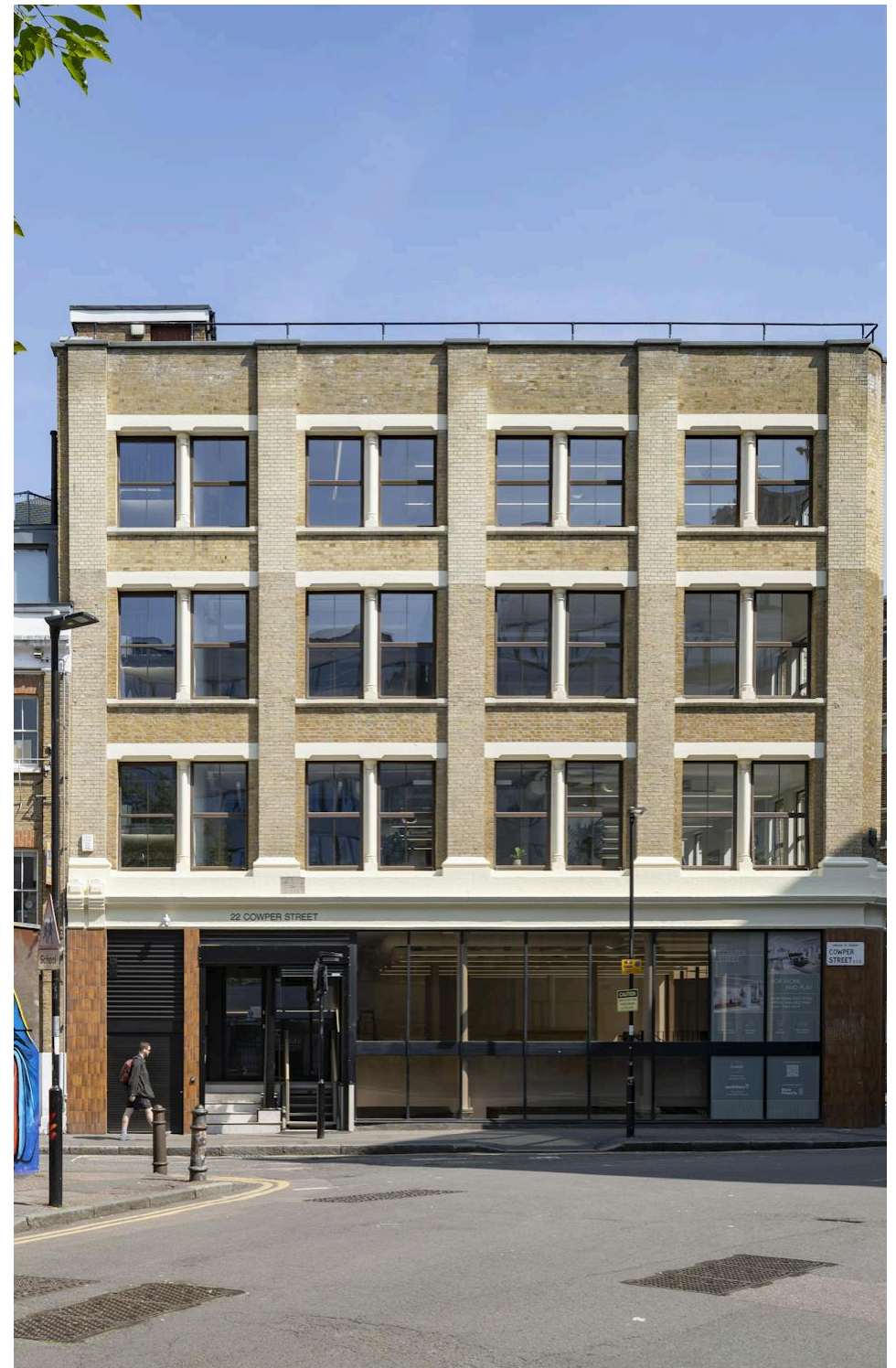
Fitout

Fitted. Both CAT A+ or CAT A floors

Description

22 Cowper Street has undergone a comprehensive refurbishment and offers premium Grade A office space in the heart of Shoreditch. The building offers CAT A and fully fitted office space on traditional or fully managed lease terms.

A blend of contemporary style and high-quality finishes creating an inspiring new workplace. The comprehensive refurbishment features a new reception and best-in-class end-of-trip facilities.



For Rent

22-24 Cowper Street
Shoreditch EC2A

[Click to Play](#)



For Rent

22-24 Cowper Street
Shoreditch EC2A

[Click to Play](#)



For Rent

22-24 Cowper Street
Shoreditch EC2A

Meeting Room

Size

1,615 - 5,241 Ft²

Rent

£52.50 - £72.50 per sq ft

Fitout

Fitted. Both CAT A+ or CAT A
floors

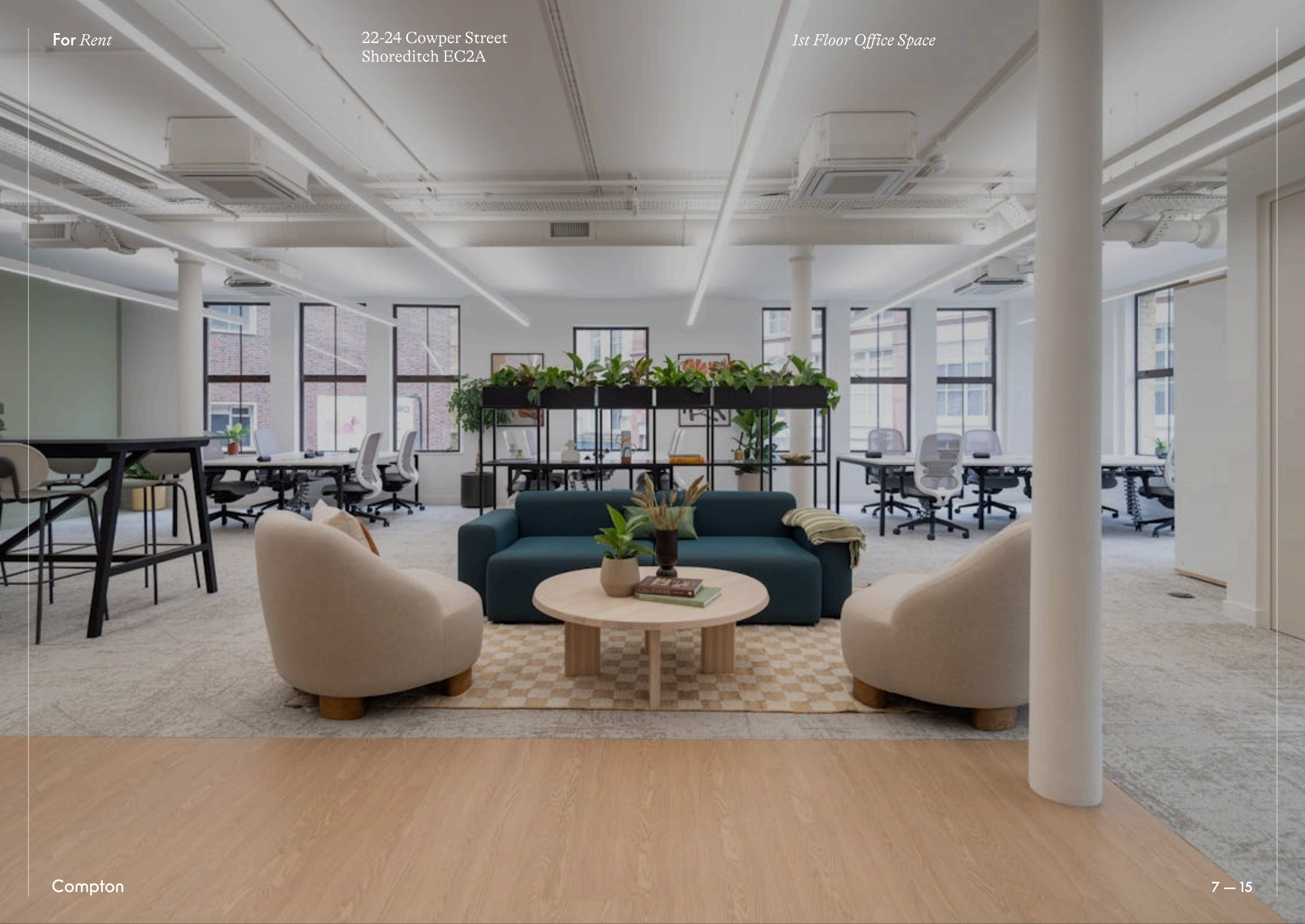


Compton

For Rent

22-24 Cowper Street
Shoreditch EC2A

1st Floor Office Space



For Rent

22-24 Cowper Street
Shoreditch EC2A

1st Floor Office Space



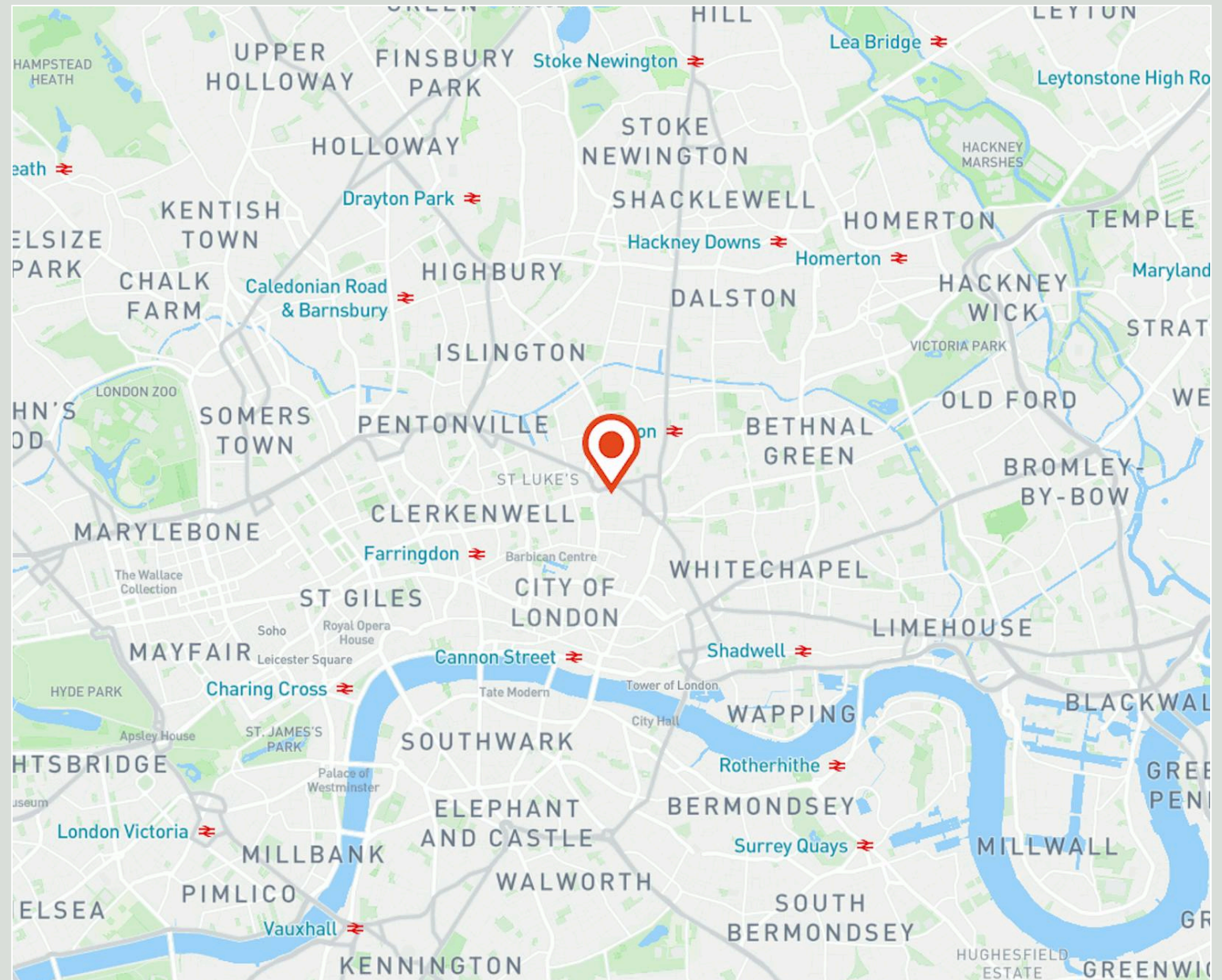
1st Floor Office Space

For Rent

22-24 Cowper Street
Shoreditch EC2A

Location

Perfectly located for easy access to the City's transport network, just a one-minute walk from Old Street Station. The convenient location attracts global companies including tech giants, advertising and creative agencies, and more making for a bustling business destination.



Compton

For Rent

22-24 Cowper Street
Shoreditch EC2A

1st Floor Office Space

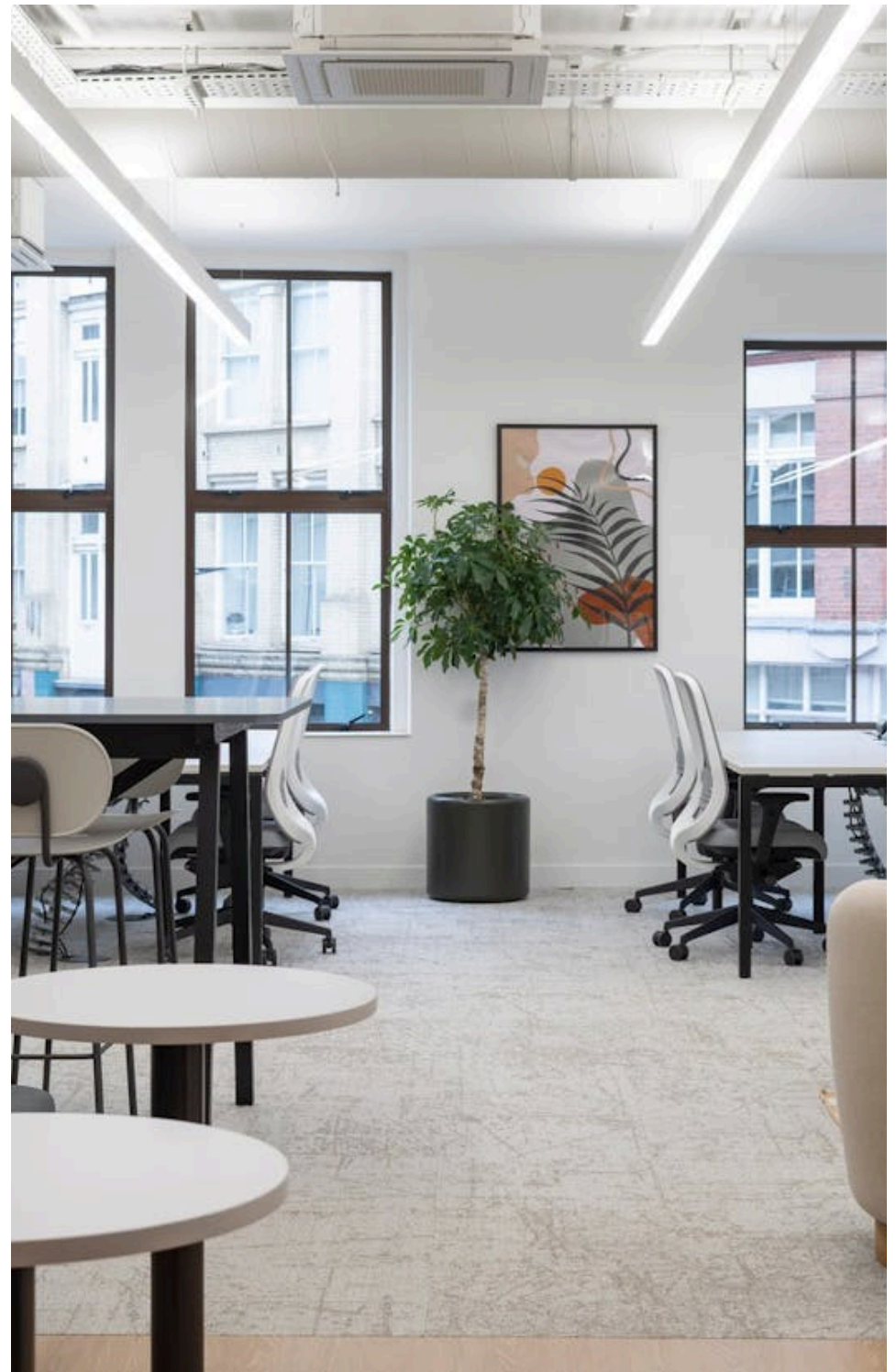


For Rent

22-24 Cowper Street
Shoreditch EC2A

Amenities

- Brand newly refurbished
- Reimagined entrance
- CAT A & fully fitted options available
- Managed options available
- Fibre enabled
- Excellent natural daylight
- Demised WC's
- Towel service
- Showers
- Bicycle storage
- Pet friendly
- EPC A

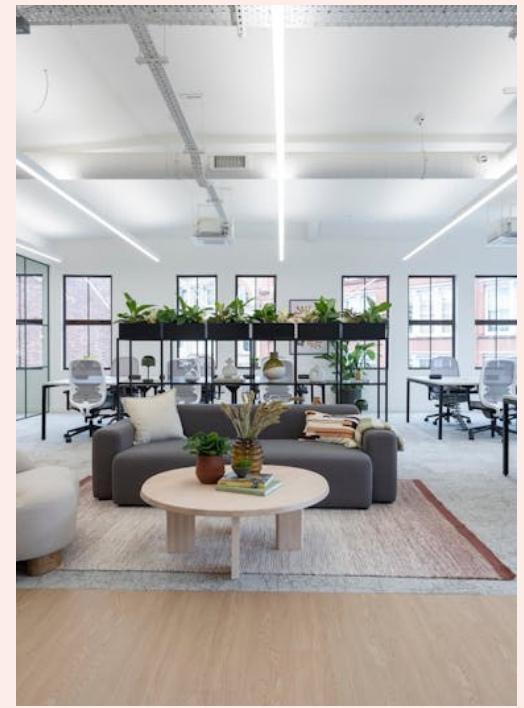


Compton

For Rent

22-24 Cowper Street
Shoreditch EC2A

3rd Floor Office Space



3rd Floor Office Space

Name	Sq Ft	Rent (Sq Ft)	Rates Payable (Sq Ft)	Service Charge (Sq Ft)	Total Month	Total Year	Availability
3rd - Fully Fitted	1,583	£72.50	£25	£13.04	£14,582.07	£174,984.82	Let
2nd - Fully Fitted	1,548	£69.50	£25	£13.04	£13,872.66	£166,471.92	Available
1st - Fully Fitted	1,559	-	On Application	On Application	-	-	Let
Unit - Ground & Lower Ground	2,110	£52.50	£25	£13.04	£15,919.95	£191,039.40	Available
Total	6,800	£64.83	£25	£13.04	£44,374.68	£532,496.14	

For Rent

22-24 Cowper Street
Shoreditch EC2A

Tenure

New Lease

Availability

Available Immediately

Compton Concierge

Want your workspace *managed*?

Find out more

compton.london/concierge

Content

Watch the Film
(click button)



Contact Us

[compton.london](https://www.compton.london)

020 7101 2020

enquiries@compton.london

All appointments to view must be arranged via sole agents, Compton, through:



Emma Higgins

eh@compton.london

0207 101 2020 | 07769 605 295



Elliott Stern

es@compton.london

0207 101 2020 | 07834 918700



Dylan Kessel

dk@compton.london

0207 101 2020 | 07734374594