

GODDARD CORPORATE PARK

7515 Mission Dr | Seabrook, MD 20706



Leasing Information:
301.304.8300

Paul "Rocky" Kern **Richard Coppola**
301.304.8399 301.304.8405
pkern@lpc.com rcoppola@lpc.com

Lincoln

1101 Wootton Pkwy
Suite 410
Rockville, MD 20854

www.lpc.com

GODDARD CORPORATE PARK

7515 Mission Dr | Seabrook, MD 20706

Available Space Summary

2,992 - 41,480 SF



Availabilities	SF	Date Available
7515 - 1st Floor	2,992 SF	Immediately
7515 - 2nd Floor*	41,480 SF	Immediately
7515 - 3rd Floor*	41,480 SF	Immediately

*2nd & 3rd floors - Contiguous 82,960 SF

Property Highlights

- 114,700 Total SF, Class B Office Building
- Close proximity to NASA, restaurants, and shopping
- Convenient access to Capital Beltway, I-95, and BWI Airport
- Abundant, free surface parking
- Beautifully landscaped with pond, running and biking trails, and picnic areas

Paul "Rocky" Kern

301.304.8399
pkern@lpc.com

Richard Coppola

301.304.8405
rcoppola@lpc.com

Lincoln

GODDARD CORPORATE PARK

7515 Mission Dr | Seabrook, MD 20706

Nearby Retail

2,992 - 41,480 SF



Paul "Rocky" Kern

301.304.8399
pkern@lpc.com

Richard Coppola

301.304.8405
rcoppola@lpc.com

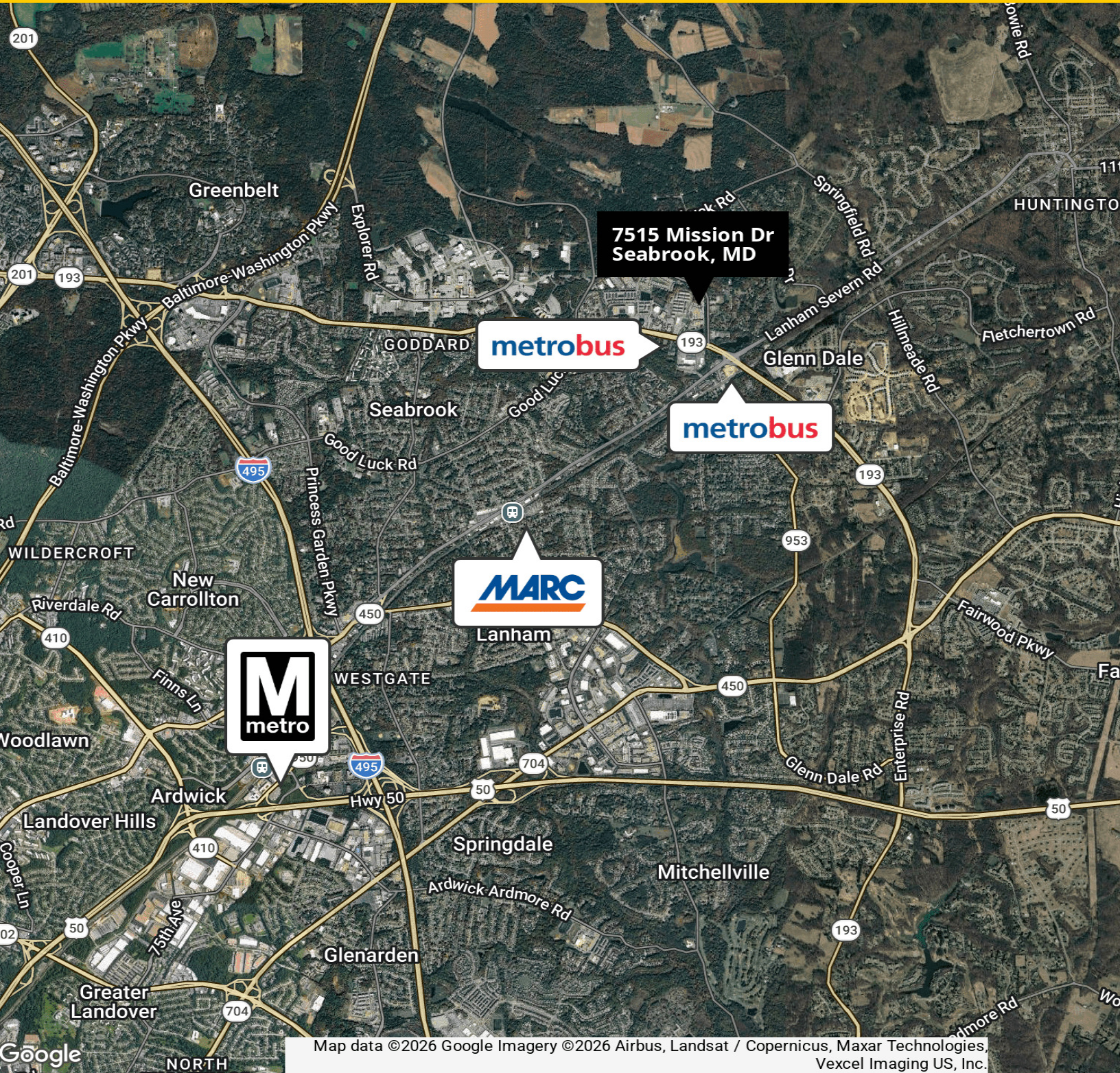
Lincoln

GODDARD CORPORATE PARK

7515 Mission Dr | Seabrook, MD 20706

Public Transportation

2,992 - 41,480 SF



Map data ©2026 Google Imagery ©2026 Airbus, Landsat / Copernicus, Maxar Technologies, Vexcel Imaging US, Inc.

Paul "Rocky" Kern

301.304.8399
pkern@lpc.com

Richard Coppola

301.304.8405
rcoppola@lpc.com

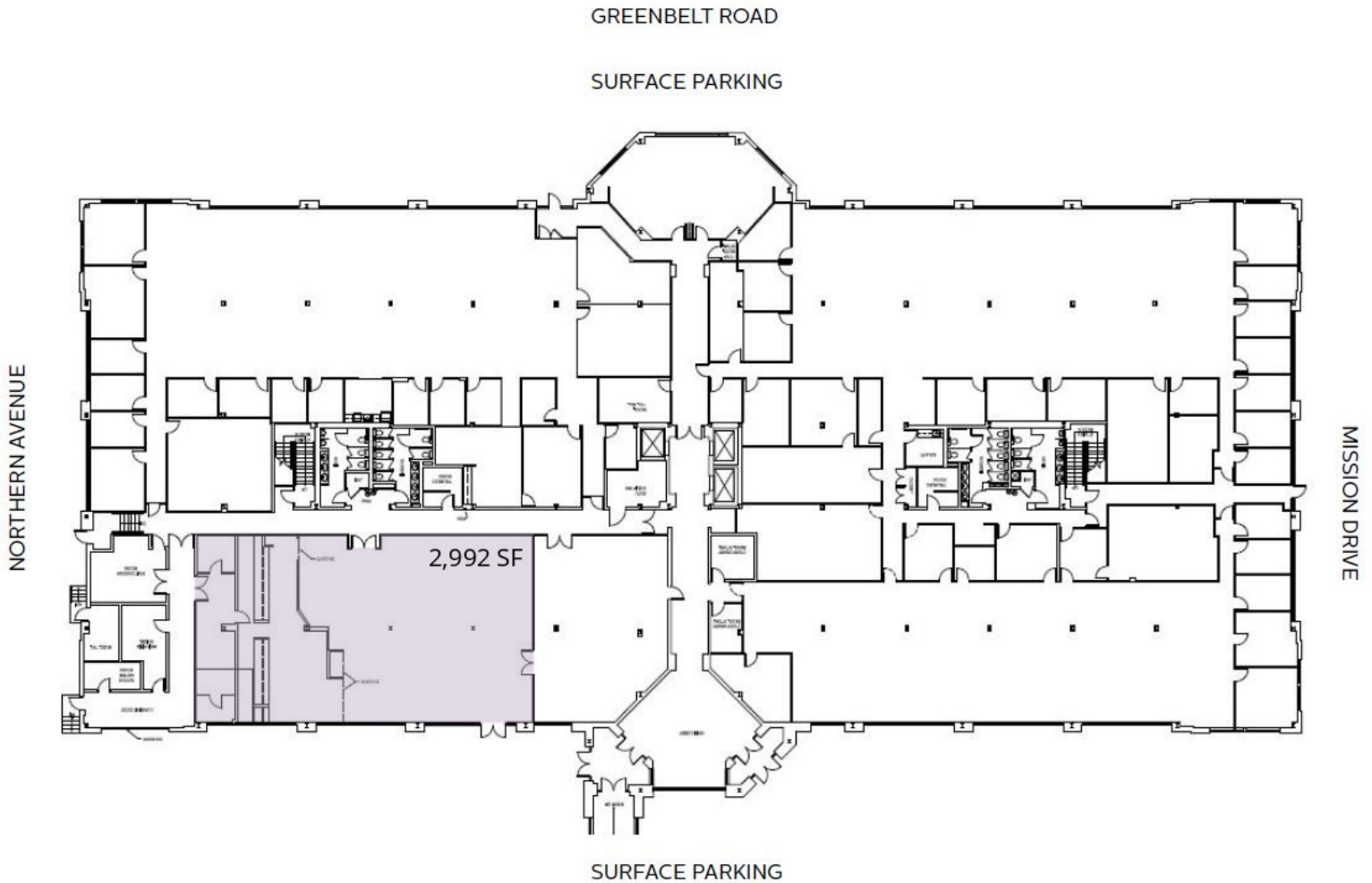
Lincoln

GODDARD CORPORATE PARK

7515 Mission Dr | Seabrook, MD 20706

7515 Mission - 1st Floor

2,992 SF



Suite	Size	Description
■ 7515 - 1st Floor	2,992 SF	Available Immediately Cafeteria / Kitchen Space

Paul "Rocky" Kern Richard Coppola

301.304.8399
pkern@lpc.com

301.304.8405
rcoppola@lpc.com

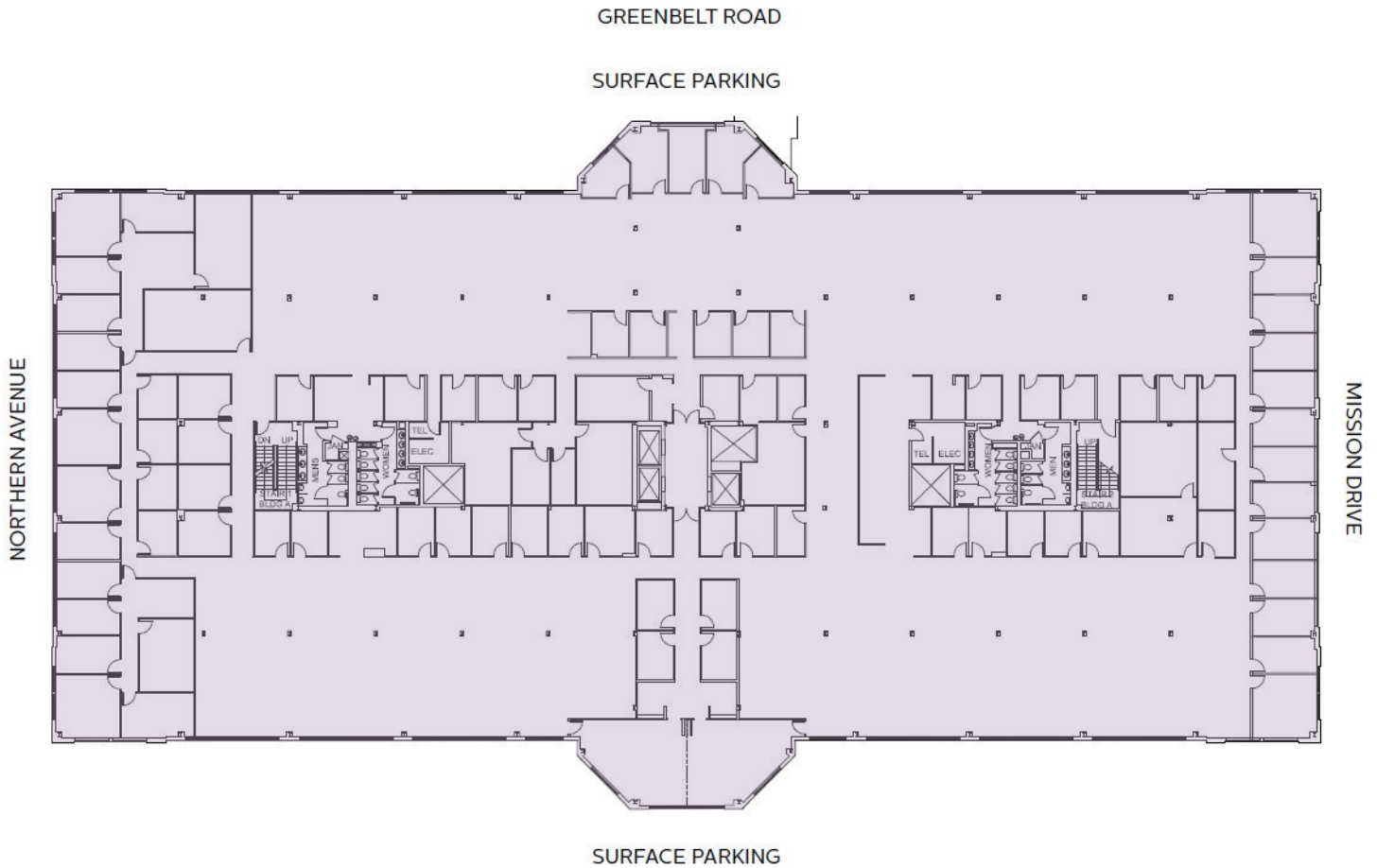
Lincoln

GODDARD CORPORATE PARK

7515 Mission Dr | Seabrook, MD 20706

7515 Mission - 2nd Floor

41,480 SF



Suite	Size	Description
■ 7515 - 2nd Floor*	41,480 SF	Available Immediately Full Floor Opportunity

Paul "Rocky" Kern Richard Coppola

301.304.8399
pkern@lpc.com

301.304.8405
rcoppola@lpc.com

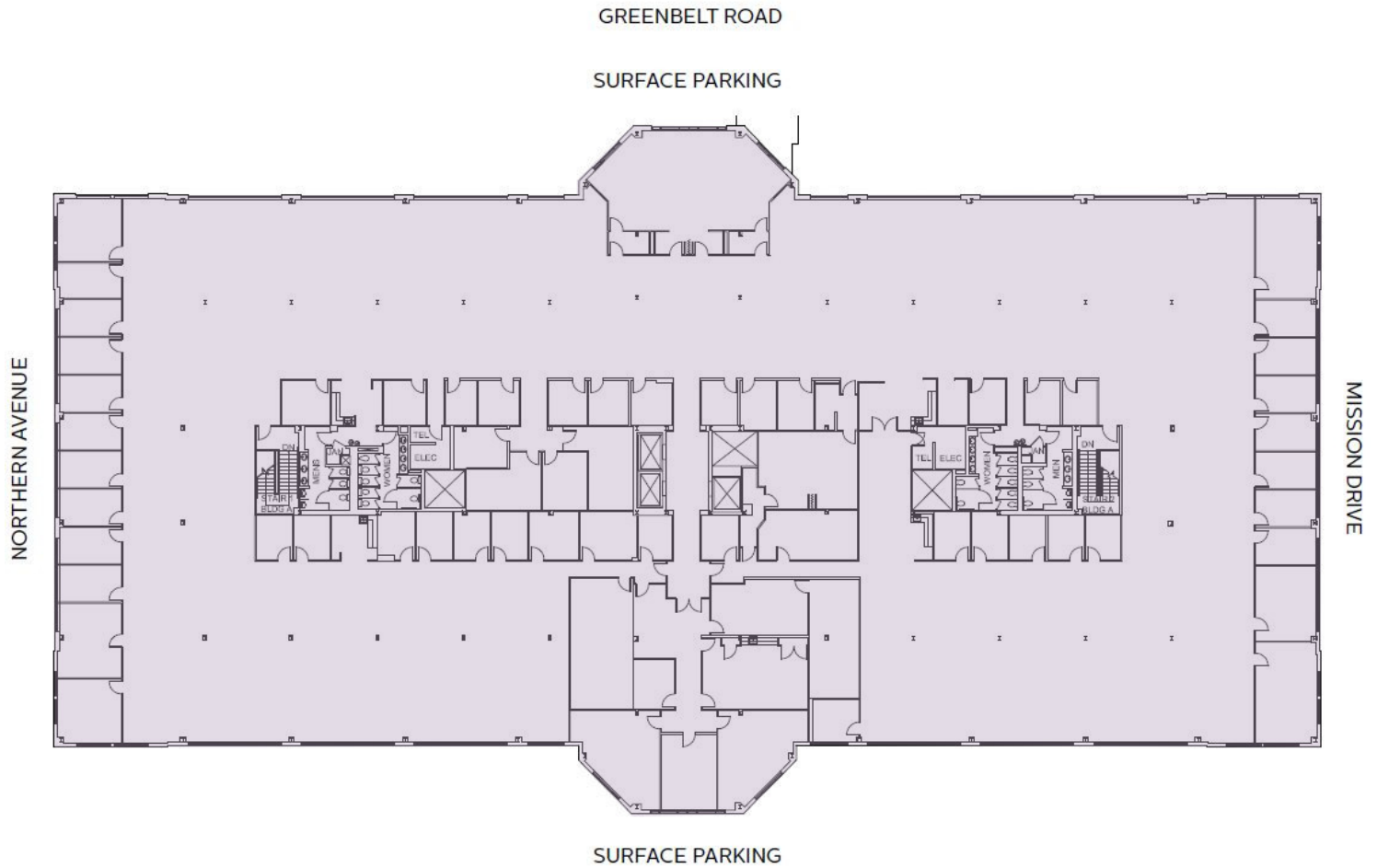
Lincoln

GODDARD CORPORATE PARK

7515 Mission Dr | Seabrook, MD 20706

7515 Mission - 3rd Floor

41,480 SF



Suite	Size	Description
■ 7515 - 3rd Floor*	41,480 SF	Available Immediately Full Floor Opportunity

Paul "Rocky" Kern Richard Coppola

301.304.8399
pkern@lpc.com

301.304.8405
rcoppola@lpc.com

Lincoln



GODDARD CORPORATE PARK



7515 Mission Dr | Seabrook, MD 20706

Leasing Information:
301.304.8300

Paul "Rocky" Kern
301.304.8399
pkern@lpc.com

Richard Coppola
301.304.8405
rcoppola@lpc.com

Lincoln

1101 Wootton Pkwy
Suite 410
Rockville, MD 20854

www.lpc.com