



Keegan & Coppin
COMPANY, INC.

FOR LEASE

182 FARMERS LANE, SUITE 100A
SANTA ROSA, CA

PROFESSIONAL EAST SIDE
OFFICE SPACE AVAILABLE

182

LAW OFFICES OF MICHAEL A. FIUMARA	
RENEE VALENTINO, P.T. CENTER FOR ORTHODONTIC HEALING	PHYSICAL THERAPY & PILATES C.H.R. PERRY, DPT
GARY HOENIG, JD, PhD ATTORNEY AT LAW	ADVANCED BENEFITS GROUP
GRUND CHIROPRACTIC HEALTH CENTER	

Go beyond broker.

PRESENTED BY:

JOEL JAMAN, PARTNER
LIC # 00857563 (707) 528-1400, EXT 233
JJAMAN@KEEGANCOPPIN.COM



PROPERTY DETAILS



182 FARMERS LANE
SUITE 102
SANTA ROSA, CA

**PROFESSIONAL EAST
SIDE OFFICE SPACE
FOR LEASE**

PROPERTY INFORMATION

HIGHLIGHTS

- 1,941+/- sf Ground Floor Office Space
- 4:1,000 sf Parking, Plus Street
- Central East side Location
- Good Glassline
- Front Office and 4 Privates

Total Building SF

10,300+/- sf

Parking

On-site; 4:1,000 & Street

Zoning

Office

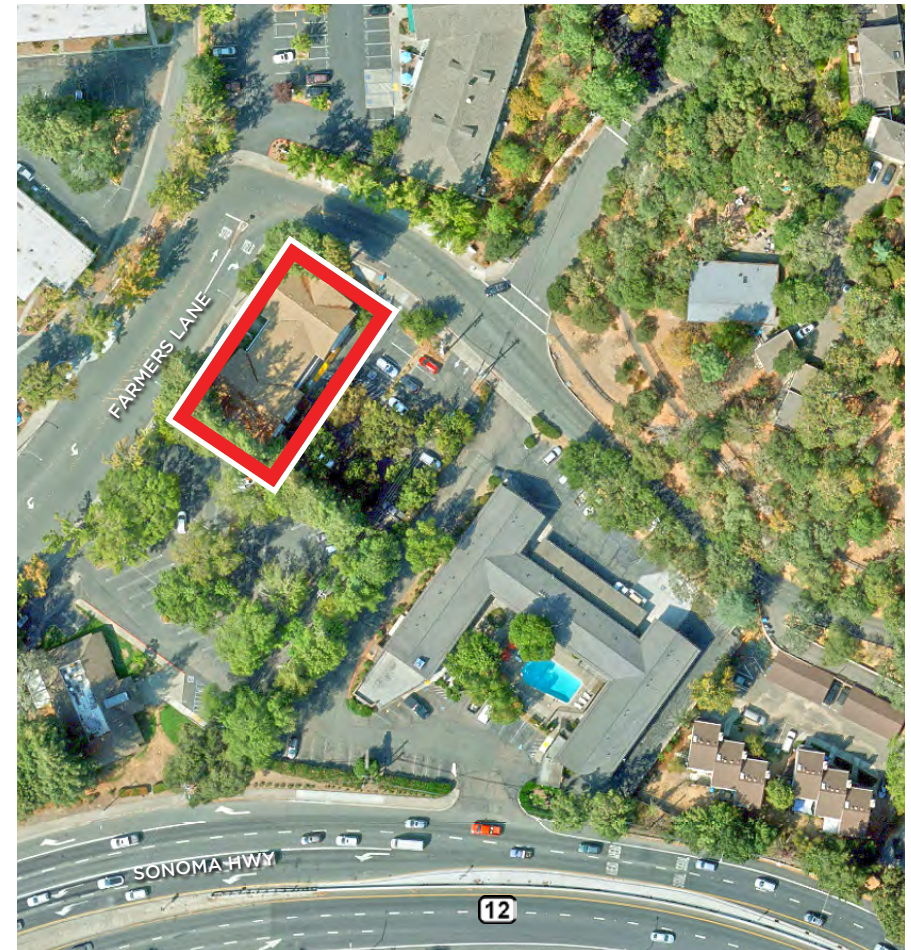
DESCRIPTION OF PREMISES

Professional office building with 1,941+/- sf on the ground floor on the east side of the building. Four private offices with windows plus the front office/reception. See attached floor plan.

LEASE TERMS

Rate

\$4,500/Month Full Service



PRESENTED BY:

JOEL JAMAN, PARTNER
KEEGAN & COPPIN CO., INC.
LIC # 00857563 (707) 528-1400, EXT 233
JJAMAN@KEEGANCOPPIN.COM



AREA DESCRIPTION



182 FARMERS LANE
SUITE 102
SANTA ROSA, CA

**PROFESSIONAL EAST
SIDE OFFICE SPACE
FOR LEASE**

DESCRIPTION OF AREA

Central east side location across the street from the Flamingo Hotel with business services and restaurants such as Safeway, banking, CVS Pharmacy, all within walking distance.

NEARBY AMENITIES

- Restaurants
- Retail shops
- Flamingo Resort and Spa

TRANSPORTATION ACCESS

- Easy access to Highway 12
- Public transportation



PRESENTED BY:

JOEL JAMAN, PARTNER
KEEGAN & COPPIN CO., INC.
LIC # 00857563 (707) 528-1400, EXT 233
JJAMAN@KEEGANCOPPIN.COM

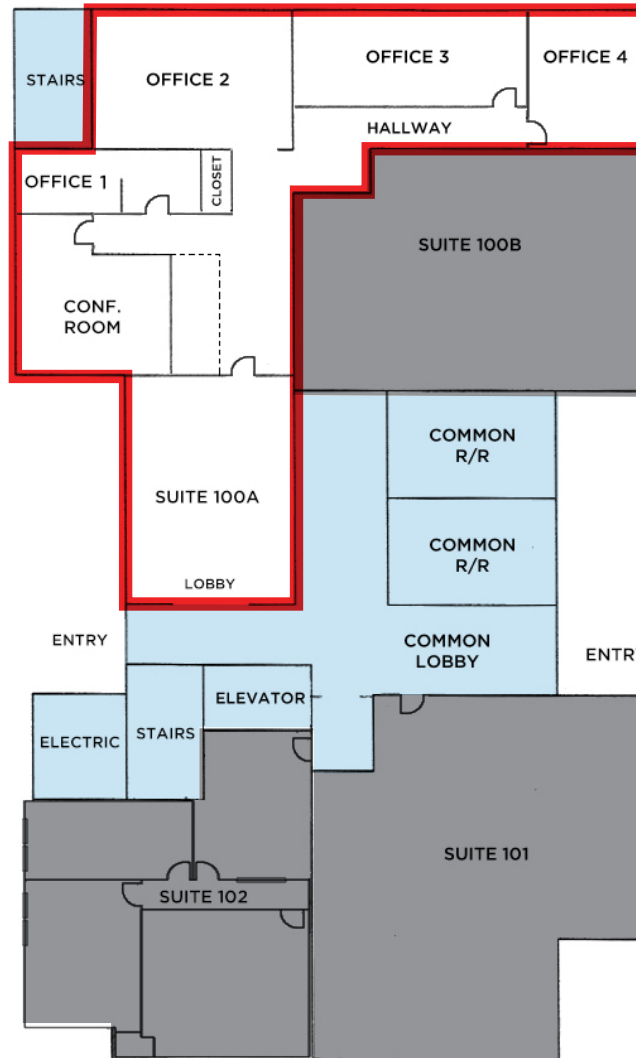


FLOOR PLAN



182 FARMERS LANE
SUITE 102
SANTA ROSA, CA

**PROFESSIONAL EAST
SIDE OFFICE SPACE
FOR LEASE**



- AVAILABLE
- COMMON AREA
- NOT AVAILABLE
- UNAFFIXED WALL

PRESENTED BY:

**JOEL JAMAN, PARTNER
KEEGAN & COPPIN CO., INC.
LIC # 00857563 (707) 528-1400, EXT 233
JJAMAN@KEEGANCOPPIN.COM**



PROPERTY PHOTOS



182 FARMERS LANE
SUITE 102
SANTA ROSA, CA

**PROFESSIONAL EAST
SIDE OFFICE SPACE
FOR LEASE**



PRESENTED BY:

**JOEL JAMAN, PARTNER
KEEGAN & COPPIN CO., INC.
LIC # 00857563 (707) 528-1400, EXT 233
JJAMAN@KEEGANCOPPIN.COM**

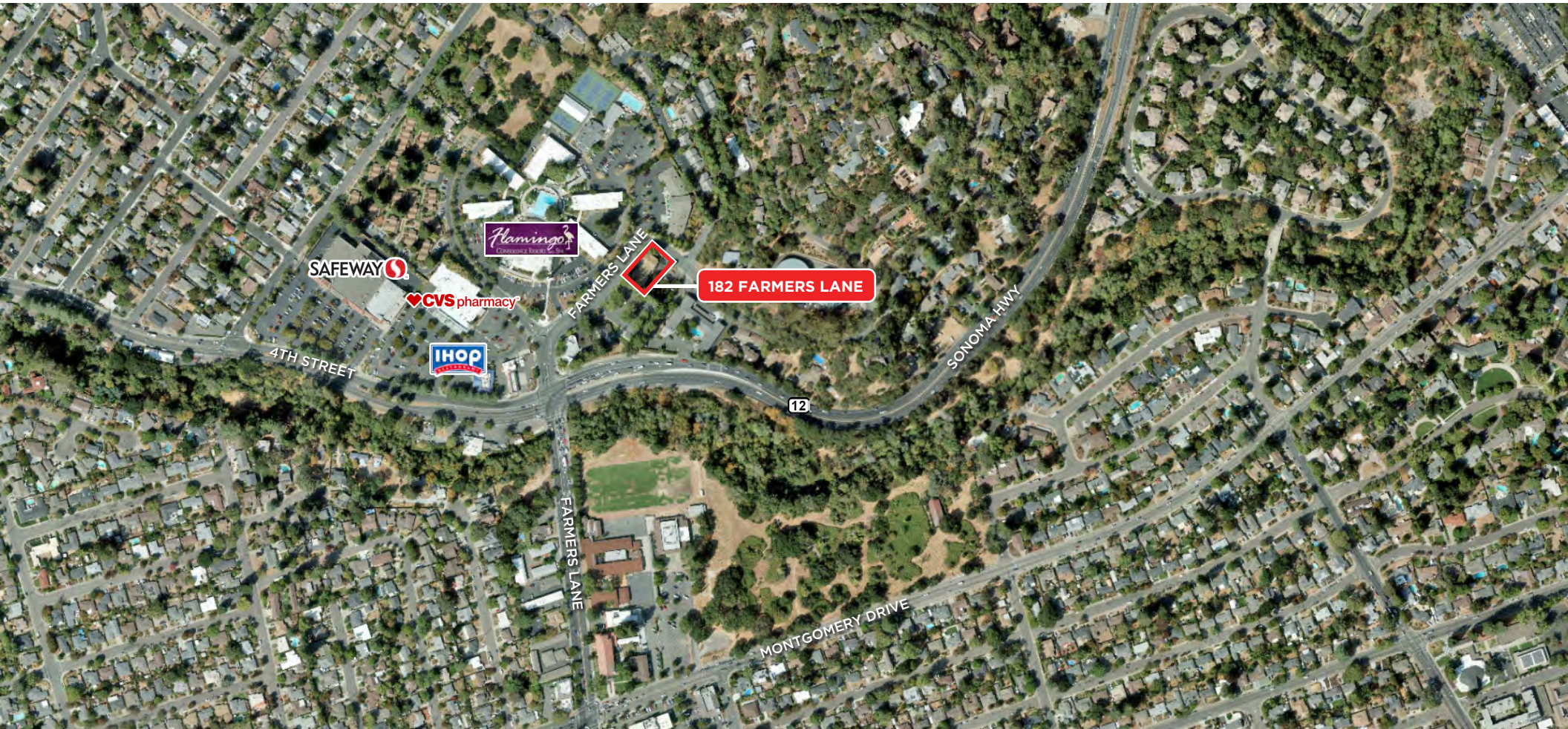


LOCATION MAP



182 FARMERS LANE
SUITE 102
SANTA ROSA, CA

**PROFESSIONAL EAST
SIDE OFFICE SPACE
FOR LEASE**



Keegan & Coppin Co., Inc.
1355 North Dutton Avenue
Santa Rosa, CA 95401
www.keegancoppin.com
(707) 528-1400

The above information, while not guaranteed, has been secured from sources we believe to be reliable. Submitted subject to error, change or withdrawal. An interested party should verify the status of the property and the information herein.

REPRESENTED BY:

JOEL JAMAN, PARTNER
LIC # 00857563 (707) 528-1400, EXT 233
JJAMAN@KEEGANCOPPIN.COM