

# Workbar Arlington

PRIVATE SUITE FOR 40  
AVAILABLE IMMEDIATELY

1167 MASSACHUSETTS AVENUE  
ARLINGTON, MA

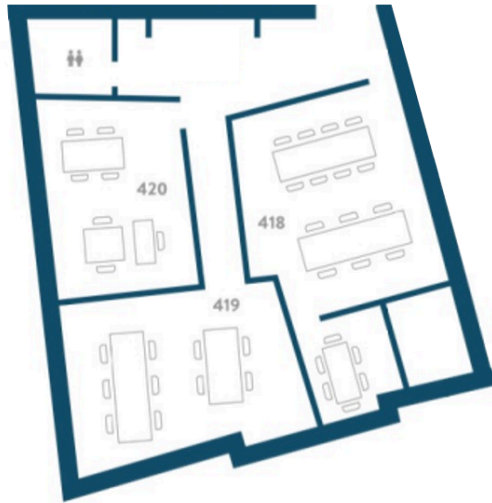
## Building Specifications

Building Size	10,000 SF
Year Renovated	2020
Floors	2
Parking	Onsite Garage, Free
Elevators	One passenger elevator

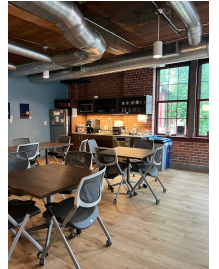
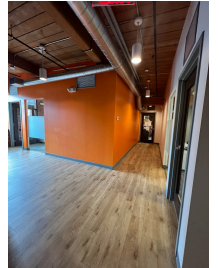
## Building Amenities

Location	Route 2 and I-95
Proximity	3 miles from Alewife 10 miles from Boston
Commute	Minuteman Bikeway Steps from MBTA

The 5.5 square miles northwest of Boston that is now Arlington was originally a section of Cambridge known as Menotomy. **Just ten miles from Downtown Boston and five miles from Harvard Square, public transportation and major highway access afford Arlington residents easy commutes and travels.** Past occupants of this space include former Cambridge (Alewife) headquartered, VC funded companies that were in their post seed funding rounds. This space was even the headquarters of a robotics company that just raised its Series A2.



Space Description: Private entrance with 3 suites and its own facilities, including restrooms. The space can accommodate up to 40 people. Attached to a coworking space with all of Workbar's signature amenities.



## Workbar Signature Amenities



WiFi



Whiteboards



IT Support



Mother's Room



Coffee & Tea



Event Space



Phone Booths



Video  
Equipment



Telepresence Room



No Noise Area



Computer Monitors



Meeting Rooms



Members Only Network



Custom Events & Programming

## Shopping

Stop and Shop  
The Burlington Mall  
Arlington Center

Fresh Pond Seafood  
Trader Joe's  
Arsenal Yards

Whole Foods  
Assembly Row  
Porter Sq Shopping Center

## Restaurants

Jimmy's Steer House  
Donut Villa  
Menotomy Grille

The Heights Pub  
Kickstand Cafe  
AOTTO

Acitron Cocina Mexicana  
La Victoria  
Scoop & Scootery

## Public Transportation

Alewife Station RL  
Minuteman Bikeway

Arlington Heights  
Busway

W. Medford Station