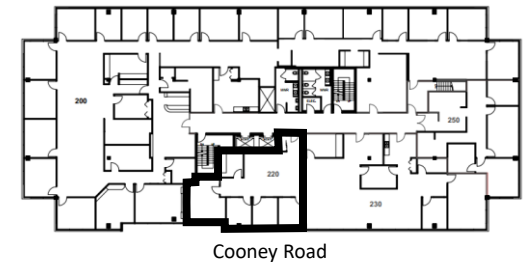
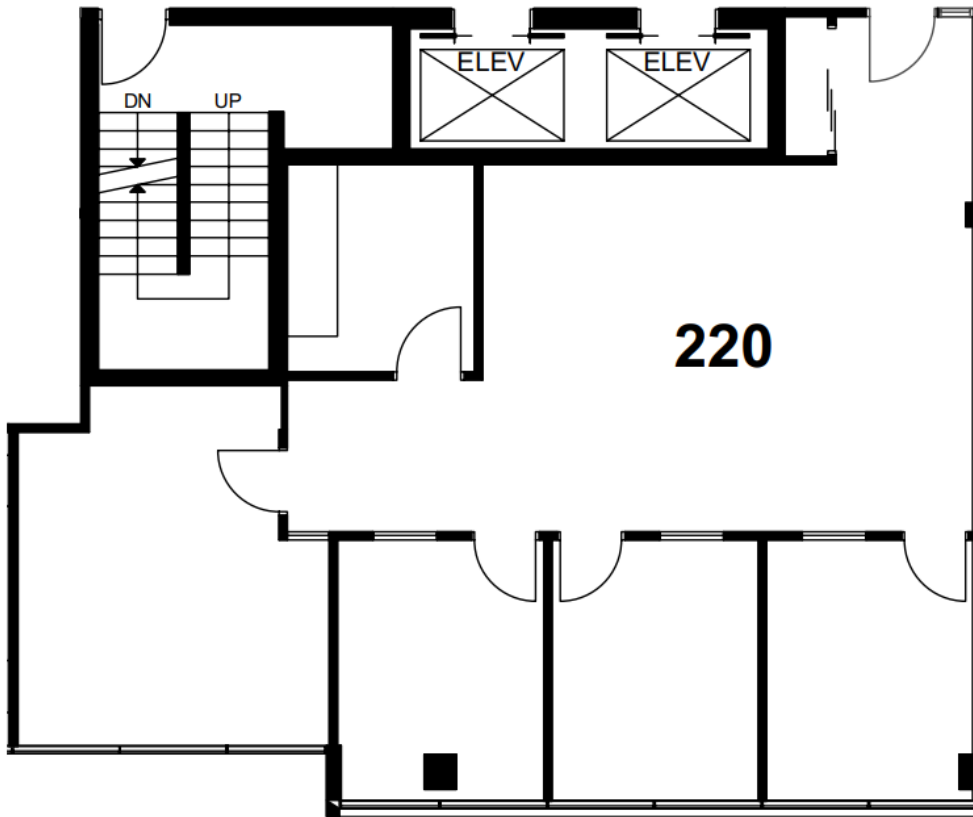
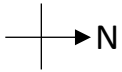


5611 Cooney Road, Richmond, BC



Suite 220
1,376 square feet

Description: East-facing suite improved with four perimeter offices, storage room, and reception area.

This is a representation for marketing purposes only and should not be used for measurements of any kind.
This drawing is not to scale.

TPMG CAPITAL

Real Estate Acquisition
Management
Leasing