

For lease

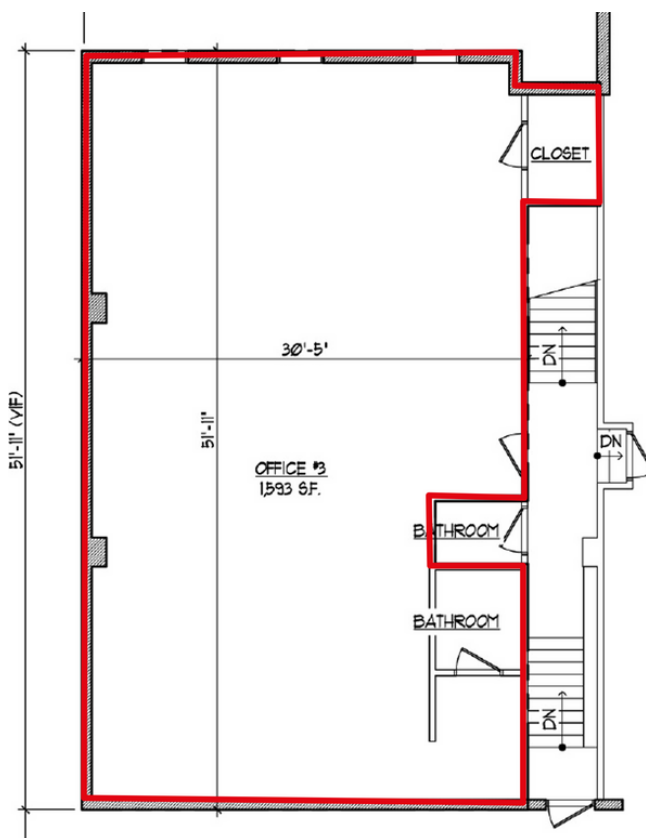
40 Main St, Madison NJ

Downtown location with parking



Property Overview

This property is located in the middle of downtown Madison, with an employee parking lot directly behind the building. Walk to shops and restaurants about town.



A few notes:

Strong local ownership, 4 min walk to the Madison train station, 19' frontage on Main Street, and high ceilings.

Location	2nd floor
Size	1,593 sf
Available	Dec. 1, 2024
Asking Rent	\$30.00/sf + tenant electric



Please contact us with any inquiries or for more information.

Inside the space



Location map

