



OFFICE TO LET

THE EDMOLIA LEWIS BUILDING

Hammersmith, Hammersmith, W6 9JU

LANDMARK DEVELOPMENT Q2 2024 - CIVIC CAMPUS, KING STREET,
HAMMERSMITH.

5,939 TO 65,945 SQ FT (551.75 TO 6,126.49 SQ M)



**BNP PARIBAS
REAL ESTATE**

www.realestate.bnpparibas.co.uk

THE EDMOLIA LEWIS BUILDING

Hammersmith, Hammersmith, W6

TO REQUEST A VIEWING CALL US 0207 629 7282



**BNP PARIBAS
REAL ESTATE**

www.realestate.bnpparibas.co.uk

DETAILS



DESCRIPTION

A new 65,000 sq. ft development located in the heart of Hammersmith. Providing flexible floors of circa 10,000 sq. ft with floor to ceiling glazing, exposed surfaces and terrace space on the 7th floors. Alongside the new office development the town hall will be transformed to include a new community art and event space with new restaurants and roof top bars. The scheme will rejuvenate the western end of King Street to create a new Hammersmith Neighbourhood. The office scheme is due to PC in Q2 2024

ACCOMMODATION

The accommodation comprises of the following areas available via a new lease direct from the landlord.

Name	sq ft	sq m	Availability
Ground	70	6.50	Available
1st	10,136	941.67	Available
2nd	10,038	932.56	Available
3rd	10,038	932.56	Available
4th	9,908	920.48	Available
5th	9,908	920.48	Available
6th	9,908	920.48	Available
7th	5,939	551.75	Available
Total	65,945	6,126.48	

KEY FEATURES

OUTGOINGS

THE EDMOLIA LEWIS BUILDING

Hammersmith, Hammersmith, W6

TO REQUEST A VIEWING CALL US 0207 629 7282



www.realestate.bnpparibas.co.uk

LOCATION



Located on the western end of King Street in Hammersmith the Civic Campus is situated in the heart of the town centre with local amenities on your door step.

Only a 10 minute walk (0.5 miles) from Hammersmith Station providing strong links into the west end in 20 minutes. The M4 and A4 motorway is also located minutes away providing strong connectivity via roads with close proximity to Heathrow Airport.

Local occupiers in Hammersmith include Disney, Virgin Media, Phillip Morris & Fox International Channels.

CONTACT US

Ed Smith
020 73185136
edward.smith@realestate.bnpparibas

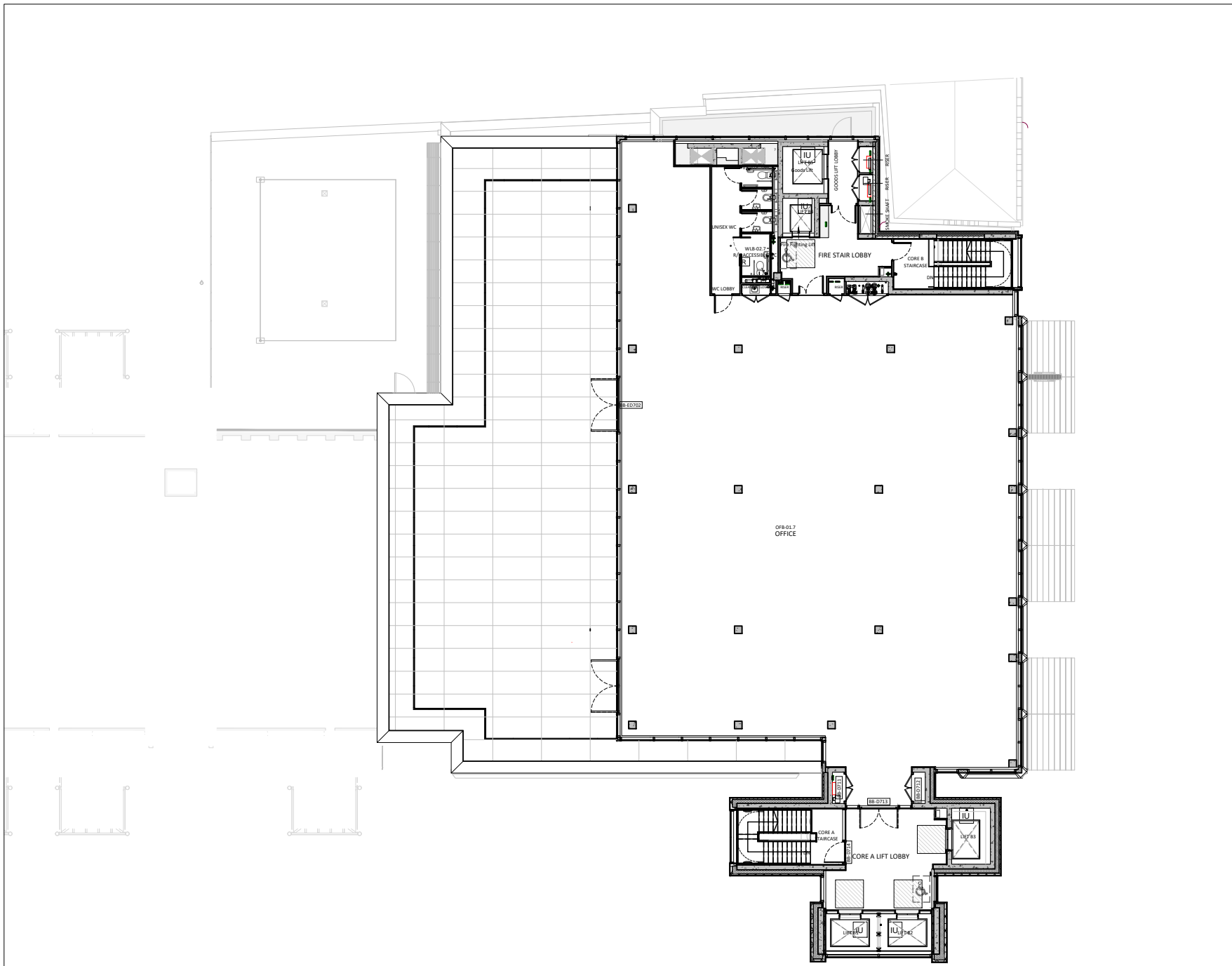
Robert Rooney
07469 403 225
robert.rooney@realestate.bnpparibas

Rebecca Hewitt
rebecca.hewitt@realestate.bnpparibas

BNP Paribas Real Estate (National Office Agency)
24 Savile Row, London, W1S 2ES

www.realestate.bnpparibas.co.uk
0207 629 7282
realestate.enquiries@bnpparibas.com
[linkedin.com/company/bnp-paribas-real-estate/@BNPPRE_UK](https://www.linkedin.com/company/bnp-paribas-real-estate/@BNPPRE_UK)

Misrepresentation Act 1967: BNP Paribas Real Estate Advisory & Property Management UK Limited for themselves and for the vendor(s) or lessor(s) of this property whose agents they are, give notice that: 1. These particulars do not constitute, nor constitute any part of, an offer or contract. 2. None of the statements contained in these particulars as to the property are to be relied on as statements or representations of fact. 3. Any intending purchaser or lessee must satisfy himself by inspection or otherwise as to the correctness of each of the statements contained in these particulars. 4. The vendor(s) or lessor(s) do not make or give and neither BNP Paribas Real Estate Advisory & Property Management UK Limited nor any person in their employment has any authority to make or give, any representation or warranty whatever in relation to this property. Finance Act 2013: Unless otherwise stated all prices and rents are quote exclusive of VAT. The Business Protection from Misleading Marketing Regulations 2008: These details are believed to be correct at the time of compilation but may be subject to subsequent amendment. Generated by Agentsinsight / Generated on 28/12/2023

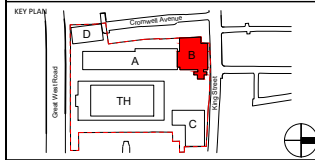


1 FP07 BLOCK B (WD 100)
1 : 100

Responsibility is not accepted for errors made by others in scaling from this drawing.
All construction information should be taken from figured dimensions only.



Rev.	DESCRIPTION	Status	DRW.	APP.	DATE
D	Dry Risers Inlets/Outlets locations updated	A	PK/RS		28.01.22
C	Updated facade setting out & external door ref.	A	PK/RS		17.01.22
B	Updated Copings at Roof Levels	A	PK/HD		06.01.22
A	First Issue for construction	A	PK/MB		25.06.21
P8	Updated door types/schedules	S3	PK/MB		08.06.21
P7	Door tags/ doors updated to suit latest proposals	S3	MB/TG		19.03.21
P6	Core-A lobby door updated	S3	PK/MB		25.02.21
P5	General Updates	S0	PK/HD		18.12.20
P4	Revised Core-A staircase	S0	PK/HD		24.09.20
P3	S56 Updates	S0	PK/HD		21.09.20
P2	Revised Grids	S0	PK/HD		15.06.20
P1	For Information	S0	PK/HD		02.06.20



ORIGINATOR	Architecture	Offices
24 Church St. West, Woking, Surrey, GU24 8ET 01483 494 350 info@prc-group.com www.prc-group.com	Planning Master Planning Urban Design Interiors Landscape	Woking London Milton Keynes Warraw

PROJECT
WEST KING STREET RENEWAL
PROJECT CODE **11204**

DRAWING TITLE
BLOCK B - 07 SEVENTH FLOOR PLAN

BIM FILE NAME
WKS-PRC-BB-XX-M3-A-200000

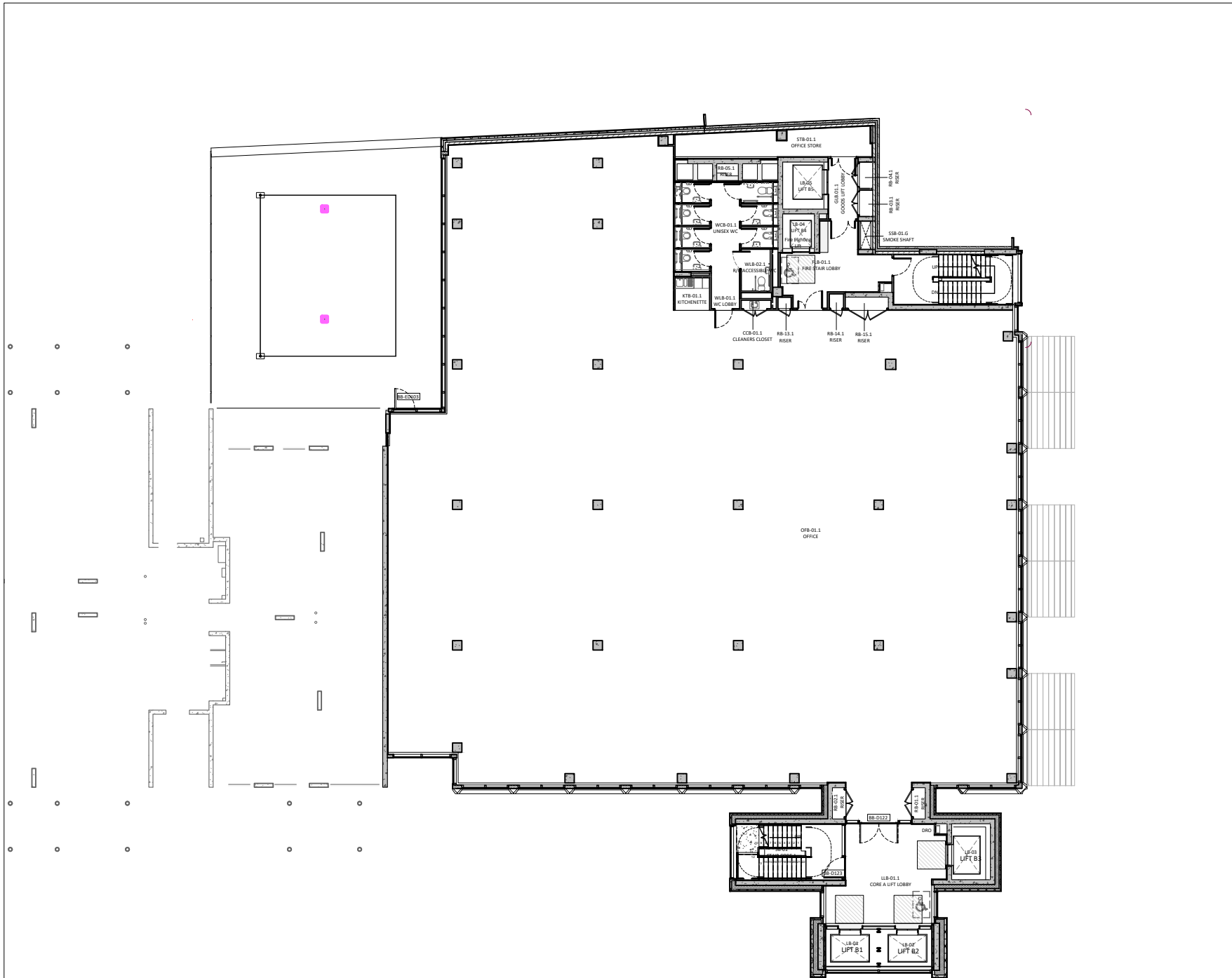
PROJECT STAGE
STAGE 05

FIRST ISSUE DATE
02/06/20

STATUS CODE
A : CONSTRUCTION ISSUE

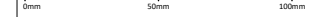
SCALE
1 : 100 @ A1

PROJECT	ORIGINATOR	ZONE	LEVEL	TYPE	ROLE	NUMBER	REV
WKS	PRC	BB	07	DR	A	201309	D

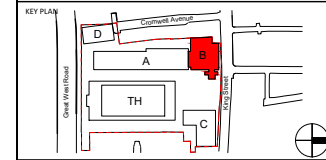


1 FP01 BLOCK B (WD 100)
1 : 100

Responsibility is not accepted for errors made by others in scaling from this drawing.
All construction information should be taken from figured dimensions only.



E	Dry Risers Inlets/Outlets locations updated	A	PK/RS	28.01.22	
D	Updated facade setting out & external door ref.	A	PK/RS	17.01.22	
C	Updated boundary wall build-up. Accessible toilets handing amended.	A	PK/MB	13.09.21	
B	West boundary wall cladding revised	A	PK/HD	21.07.21	
A	First issue for construction	A	PK/MB	25.06.21	
PA	Updated door types/schedules	S3	PK/MB	08.06.21	
PR	Door tags/doors updated to suit latest proposals	S3	M/TC	13.03.21	
P7	Core-A lobby door updated	S3	PK/MB	25.02.21	
P6	Area of soft floor updated	S3	MB/HD	21.01.21	
P5	General Updates	S0	PK/HD	18.12.20	
P4	Revised Core-A staircase	S0	PK/HD	24.09.20	
P3	S56 Updates	S0	PK/HD	21.09.20	
P2	Revised Grids	S0	PK/HD	15.06.20	
P1	For Information	S0	PK/HD	02.06.20	
Rev.	DESCRIPTION	Status	DRW	APP	DATE



ORIGINATOR		
24 Church St. West, Woking, Surrey, GU24 8ET 01483 404 350 info@prc-group.com www.prc-group.com	Architecture Planning Master Planning Urban Design Interiors Landscape	Offices Woking London Milton Keynes Warwick

PROJECT
WEST KING STREET RENEWAL
PROJECT CODE **11204**

DRAWING TITLE
BLOCK B - 01 FIRST FLOOR PLAN

BIM FILE NAME
WKS-PRC-BB-XX-M3-A-200000

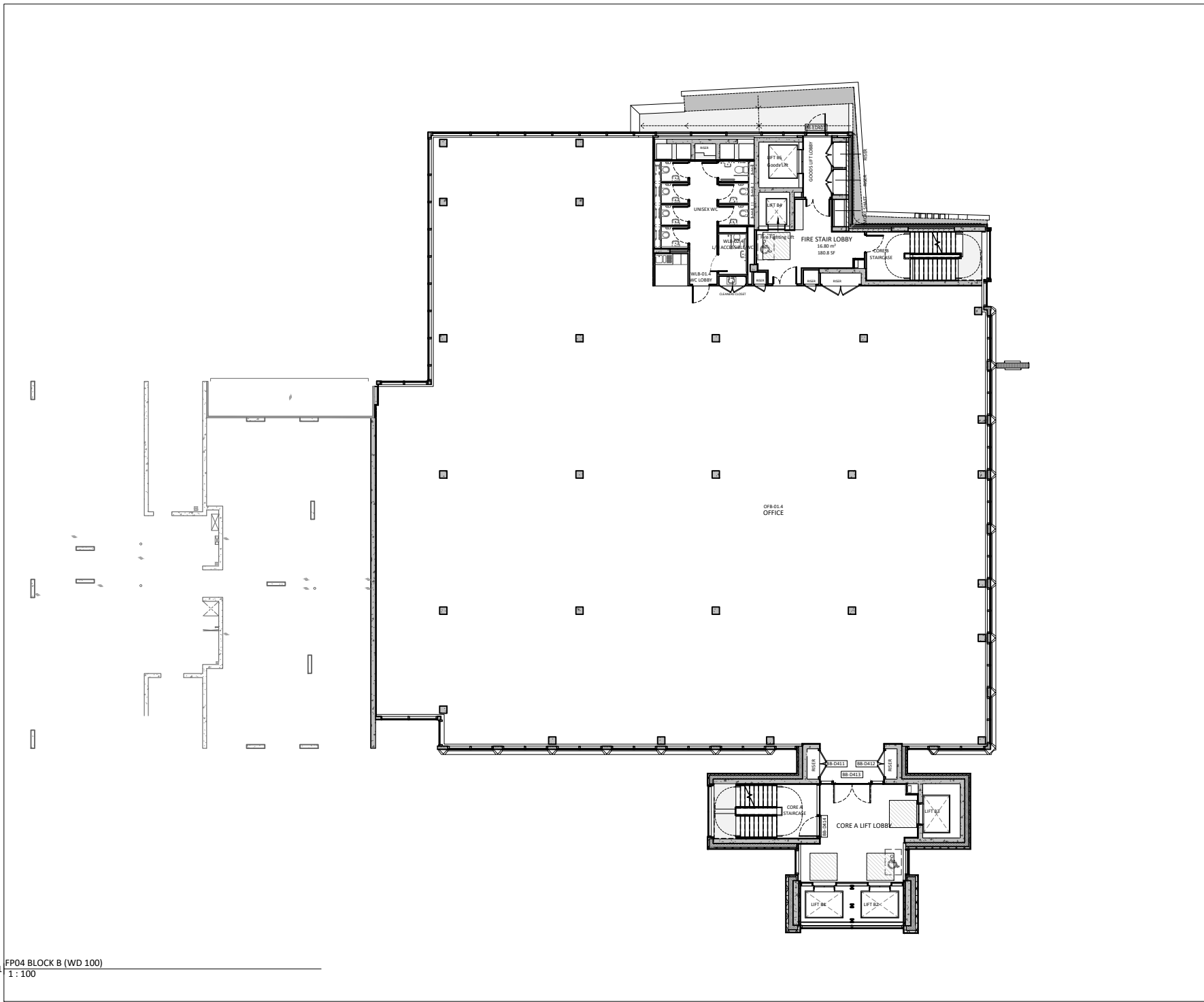
PROJECT STAGE
STAGE 05

FIRST ISSUE DATE
02/06/20

STATUS CODE
A : CONSTRUCTION ISSUE

SCALE
1 : 100 @ A1

PROJECT	ORIGINATOR	ZONE	LEVEL	TYPE	RDZ	NUMBER	REV
WKS	PRC	BB	01	DR	A	201303	E

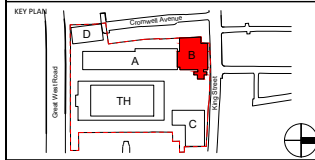


FP04 BLOCK B (WD 100)
1 : 100

Responsibility is not accepted for errors made by others in scaling from this drawing.
All construction information should be taken from figured dimensions only.



D	Dry Risers Inlets/Outlets locations updated	A	PK/RS	28.01.22	
C	Updated facade setting out & external door ref.	A	PK/RS	17.01.22	
B	Updated boundary wall build-up. Accessible toilets handing amended.	A	PK/MB	13.09.21	
A	First issue for construction	A	PK/MB	25.06.21	
P9	Updated door types/schedules	S3	PK/MB	08.06.21	
P8	Door tags/doors updated to suit latest proposals	S3	MB/TC	19.03.21	
P7	Core-A lobby door updated	S3	PK/MB	25.02.21	
P6	Area of soft floor updated	S3	MB/HD	21.01.21	
P5	General Updates	S0	PK/HD	18.12.20	
P4	Revised Core-A staircase	S0	PK/HD	24.09.20	
P3	S56 Updates	S0	PK/HD	21.09.20	
P2	Revised Grids	S0	PK/HD	15.06.20	
P1	For Information	S0	PK/HD	02.06.20	
Rev.	DESCRIPTION	Status	DRW	APP	DATE



ORIGINATOR

24 Church St. West, Woking, Surrey, GU24 8ET 01483 494 350 info@prc-group.com www.prc-group.com	Architecture Planning Master Planning Urban Design Interiors Landscape	Offices Woking London Milton Keynes Warrrow
--	--	--

PROJECT
WEST KING STREET RENEWAL
PROJECT CODE **11204**

DRAWING TITLE
BLOCK B - 04 FOURTH FLOOR PLAN

BIM FILE NAME
WKS-PRC-BB-XX-M3-A-200000

PROJECT STAGE
STAGE 05

FIRST ISSUE DATE
02/06/20

STATUS CODE
A : CONSTRUCTION ISSUE

SCALE
1 : 100 @ A1

PROJECT	ORIGINATOR	ZONE	LEVEL	TYPE	ROLE	NUMBER	REV
WKS	PRC	BB	04	DR	A	201306	D