



COMMERCIAL

Office Space Available for Lease



HIGHLIGHTS

- Lease Price: \$8,847
- SQFT: 7,078
- SQFT Lot: 84,942
- Year Built: 2006
- Zoning: CC
- Property Type: Office Space
- Listing ID: SN24163150
- Parcel #: 006150126000
- County: Butte



**132 Mission Ranch Blvd
Chico, CA, 95926**

www.selectcommercialgroup.com

**CENTURY 21
COMMERCIAL**
Select Real Estate

The award-winning Select Group of Real Estate Companies provide exceptional customer service at the local, regional, national, and international level, our experienced commercial real estate agents are here to discuss your real estate growth.

©2024 Century 21 Real Estate LLC. CENTURY 21® and CENTURY 21 Commercial® are registered trademarks owned by Century 21 Real Estate LLC. Each office is independently owned and operated.



COMMERCIAL®

132 Mission Ranch Blvd



This upscale building is versatile for many businesses. The building includes nine private offices, breakroom, large open work areas, conference room, three restrooms, two 'clean rooms' and a large storage area with oversized access door. Could be used for Medical or general office. Located in Central Chico off the Esplanade and surrounded by other professional offices, this building encompasses a professional surrounding that is inviting for your business and clients alike.

www.selectcommercialgroup.com

CENTURY 21
COMMERCIAL®

Select Real Estate

The award-winning Select Group of Real Estate Companies provide exceptional customer service at the local, regional, national, and international level, our experienced commercial real estate agents are here to discuss your real estate growth.

©2024 Century 21 Real Estate LLC. CENTURY 21® and CENTURY 21 Commercial® are registered trademarks owned by Century 21 Real Estate LLC. Each office is independently owned and operated.



COMMERCIAL®

Interior Photos



www.selectcommercialgroup.com

**CENTURY 21
COMMERCIAL®**

Select Real Estate

The award-winning Select Group of Real Estate Companies provide exceptional customer service at the local, regional, national, and international level, our experienced commercial real estate agents are here to discuss your real estate growth.

©2024 Century 21 Real Estate LLC. CENTURY 21® and CENTURY 21 Commercial® are registered trademarks owned by Century 21 Real Estate LLC. Each office is independently owned and operated.



COMMERCIAL[®]

Interior Photos



www.selectcommercialgroup.com

**CENTURY 21
COMMERCIAL[®]**

Select Real Estate

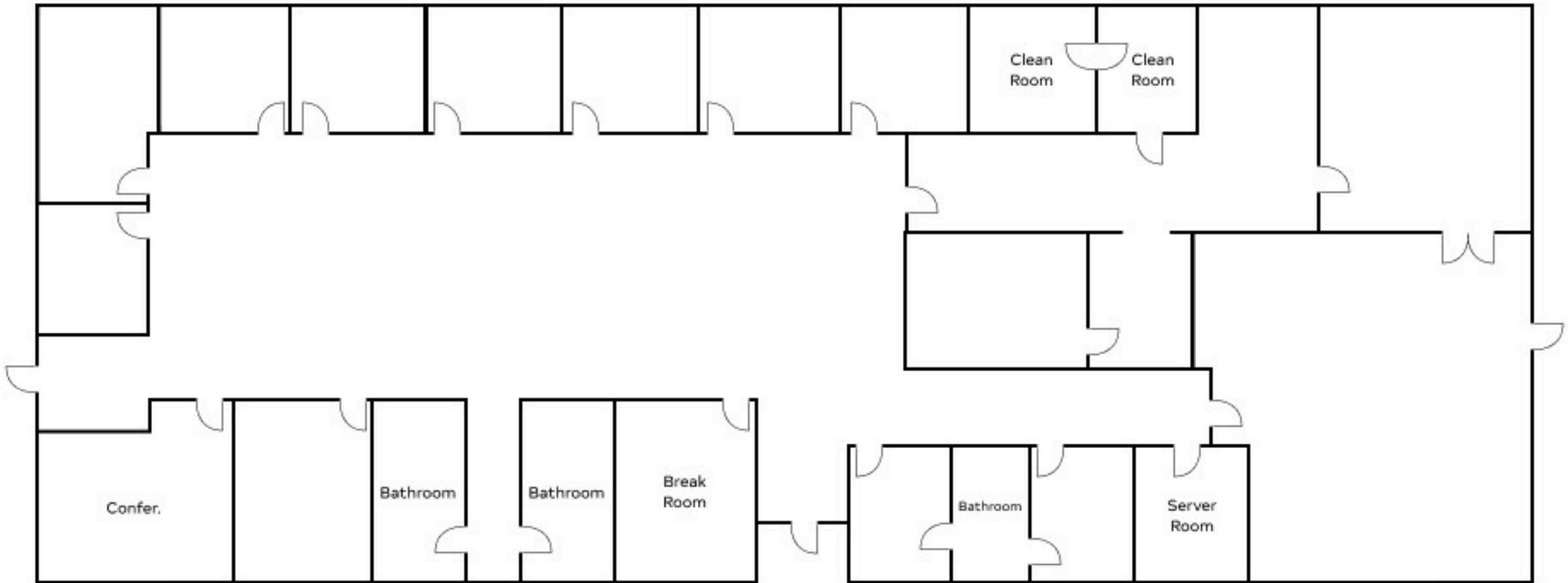
The award-winning Select Group of Real Estate Companies provide exceptional customer service at the local, regional, national, and international level, our experienced commercial real estate agents are here to discuss your real estate growth.

©2024 Century 21 Real Estate LLC. CENTURY 21[®] and CENTURY 21 Commercial[®] are registered trademarks owned by Century 21 Real Estate LLC. Each office is independently owned and operated.



COMMERCIAL

Floorplan



132 Mission Ranch Blvd, Chico, CA 95926
7078 +/- SqFt

www.selectcommercialgroup.com

CENTURY 21
COMMERCIAL
Select Real Estate

The award-winning Select Group of Real Estate Companies provide exceptional customer service at the local, regional, national, and international level, our experienced commercial real estate agents are here to discuss your real estate growth.

©2024 Century 21 Real Estate LLC. CENTURY 21® and CENTURY 21 Commercial® are registered trademarks owned by Century 21 Real Estate LLC. Each office is independently owned and operated.



COMMERCIAL

City Overview

City of Chico

Chico is home to a thriving local economy with a strong emphasis on community, making it an attractive place for businesses. The city boasts a diverse range of industries, including healthcare, education, and technology, with a steady flow of talent from California State University, providing a skilled workforce. For business owners, the city's central location within Northern California, business-friendly atmosphere, affordable housing, and vibrant cultural scene make it an attractive destination.

Chico is also known for its beautiful natural landscapes, including Bidwell Park—one of the largest municipal parks in the country—Chico offers ample opportunities for outdoor recreation, from hiking and biking to picnicking and swimming, creating an ideal work-life balance.



www.selectcommercialgroup.com

**CENTURY 21
COMMERCIAL**

Select Real Estate

The award-winning Select Group of Real Estate Companies provide exceptional customer service at the local, regional, national, and international level, our experienced commercial real estate agents are here to discuss your real estate growth.

©2024 Century 21 Real Estate LLC. CENTURY 21® and CENTURY 21 Commercial® are registered trademarks owned by Century 21 Real Estate LLC. Each office is independently owned and operated.



COMMERCIAL[®]

For More Information
Contact Me:



Kimberly Shaffer

DRE # 01415693

530-680-7685

Kimsellschico@gmail.com

1101 El Monte Ave, Chico CA 95928

www.selectcommercialgroup.com

**CENTURY 21
COMMERCIAL[®]**

Select Real Estate

The award-winning Select Group of Real Estate Companies provide exceptional customer service at the local, regional, national, and international level, our experienced commercial real estate agents are here to discuss your real estate growth.

©2024 Century 21 Real Estate LLC. CENTURY 21[®] and CENTURY 21 Commercial[®] are registered trademarks owned by Century 21 Real Estate LLC. Each office is independently owned and operated.