

41

BROMFIELD ST

FULL BUILDING
OPPORTUNITY
AVAILABLE FOR LEASE

DOWNTOWN CROSSING

 **Atlantic**
URBAN | RETAIL™



PROPOSED RENDERING

THE OPPORTUNITY

- 1,137 SF street level + 4 Floors (1,137 SF) + Basement
- Located on Bromfield Street, between busy Tremont and Washington Streets in Downtown Crossing

DEMOGRAPHICS	.25 MILES	.5 MILES	1 MILE
Daytime Population	57,581	162,492	308,069
Population	4,427	22,010	65,599
Median HH Income	\$135,818	\$135,015	\$134,529



DOWNTOWN CROSSING

- This neighborhood is home to some of the highest pedestrian counts in the City
- The Washington Street corridor provides an ideal confluence of daily workers, shoppers, residents, foodies, students, theatre goers, and tourists
- High-end residential and mixed-use projects over the past decade have completely transformed Downtown Crossing into a popular seven-day-a-week destination
- The food scene serves the entire community with new fine dining concepts, modern quick-serve, and local street vendors

DTX BY THE NUMBERS



500+
SHOPS & RESTAURANTS



14,000
STUDENTS



4M
FREEDOM TRAIL
VISITORS ANNUALLY



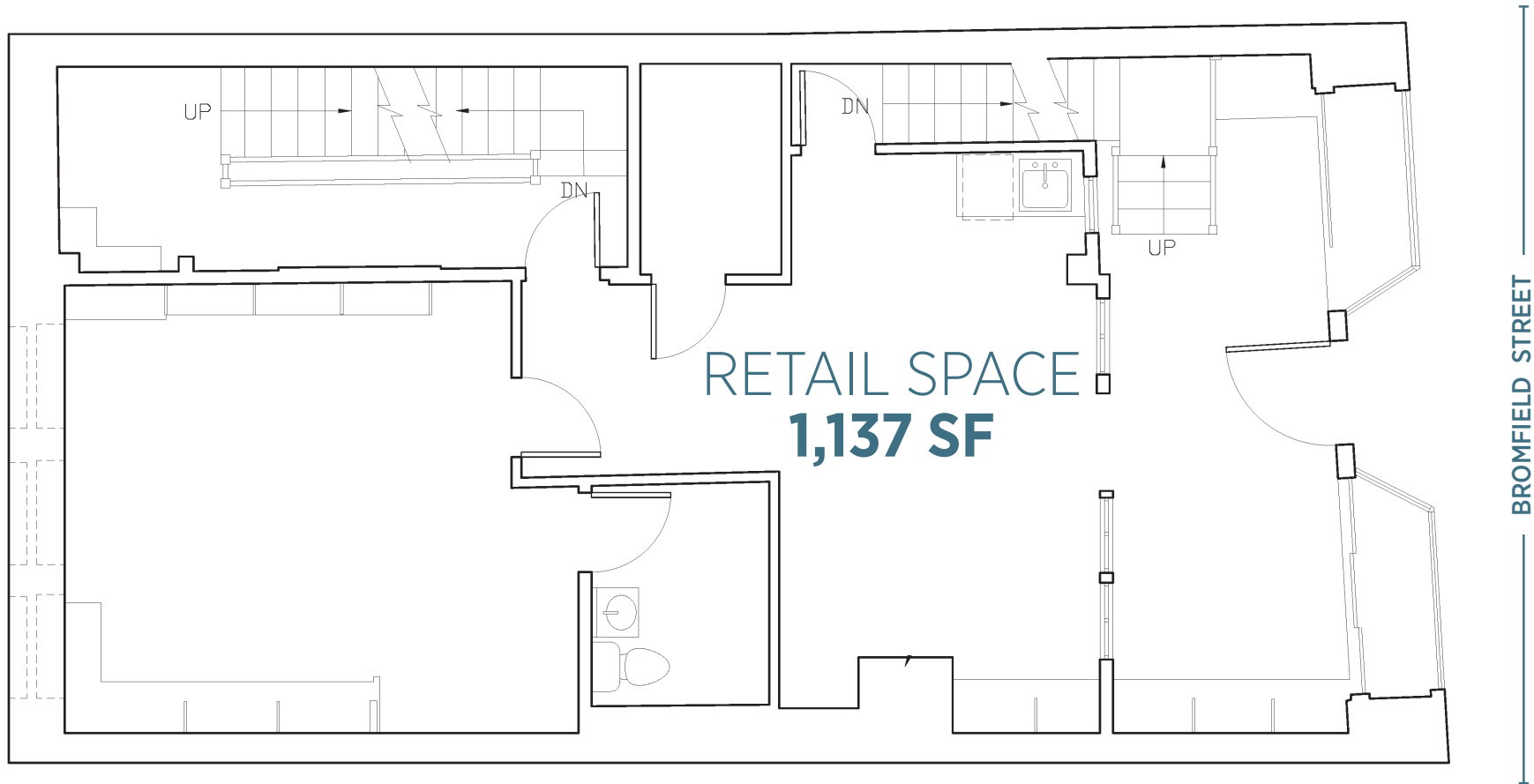
43M SF
OF OFFICE SPACE IN
DOWNTOWN BOSTON



162,492 DAYTIME POPULATION
(WITHIN 1/2 MILE)

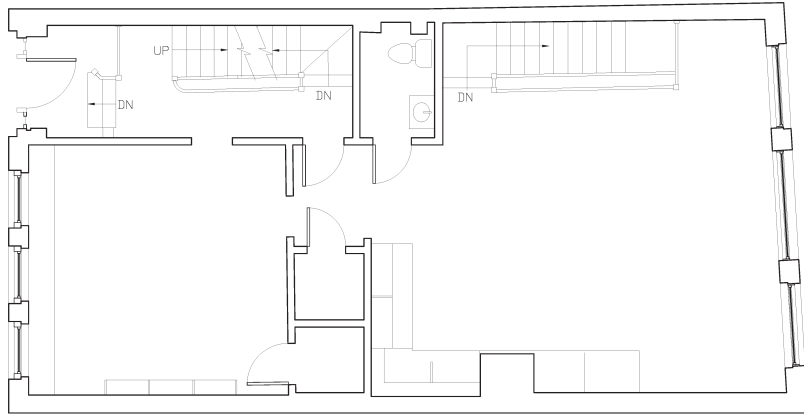


FLOOR PLAN



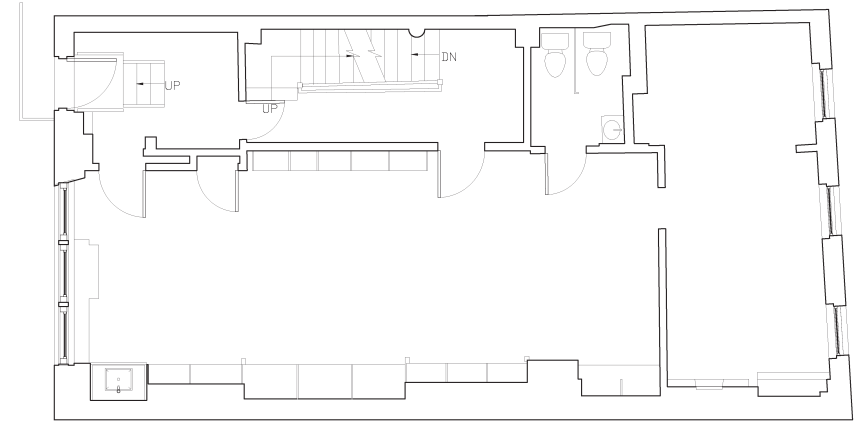
1ST FLOOR

FLOOR PLAN



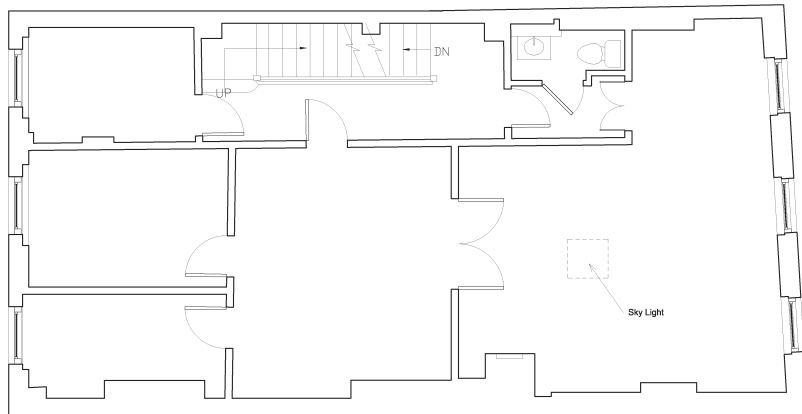
2ND FLOOR
1,137 SF

BROMFIELD STREET



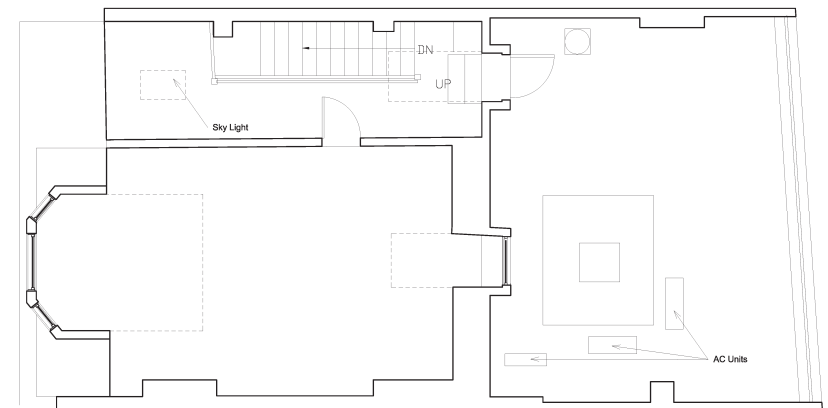
3RD FLOOR
1,137 SF

BROMFIELD STREET



4TH FLOOR
1,137 SF

BROMFIELD STREET



5TH FLOOR
1,137 SF

BROMFIELD STREET

THE NEIGHBORHOOD

Tatte

sweetgreen



snipes

PRIMARK

Marshalls



DIG

verizon

CVS

TJ-maxx

HomeGoods

GRECO
TRULY GREEK

CHIPOTLE
MEXICAN GRILL

Atlantic
URBAN RETAIL





LINDSEY SANDELL
617.369.5936
lsandell@atlanticretail.com

SOPHIE MORRILL
617.369.5926
smorrill@atlanticretail.com