

For Lease

Liberties Walk
1022-1030 N 2nd St.,
Philadelphia, PA 19123

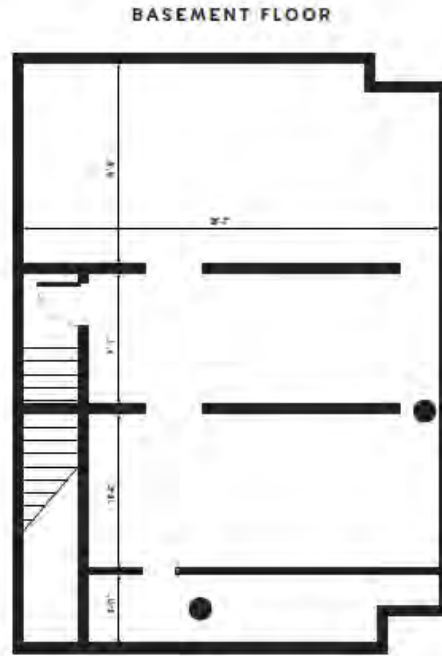
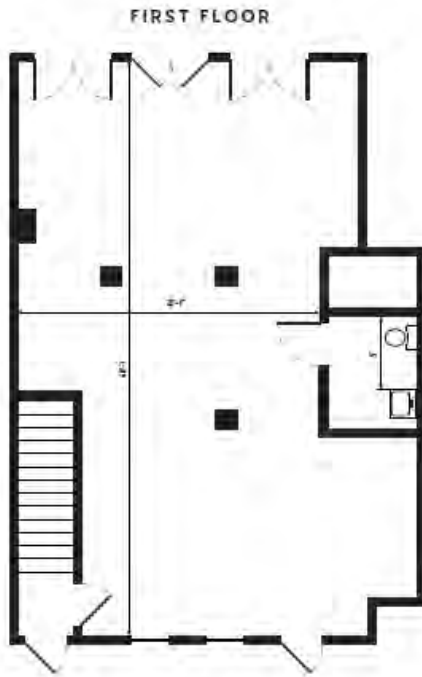


Turnkey Office/Retail Availabilities : 800-1,200sf

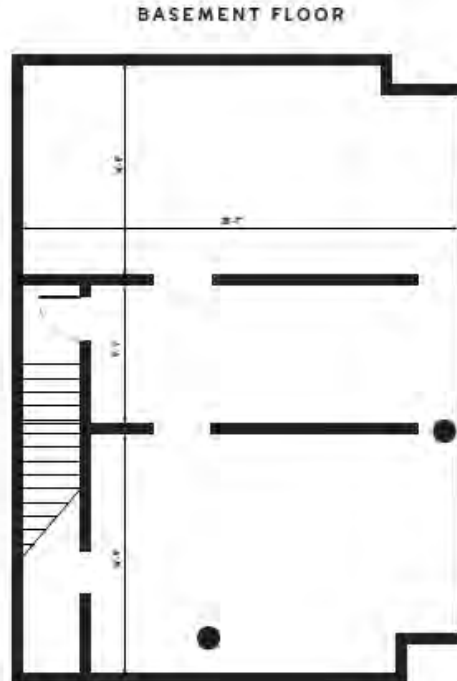
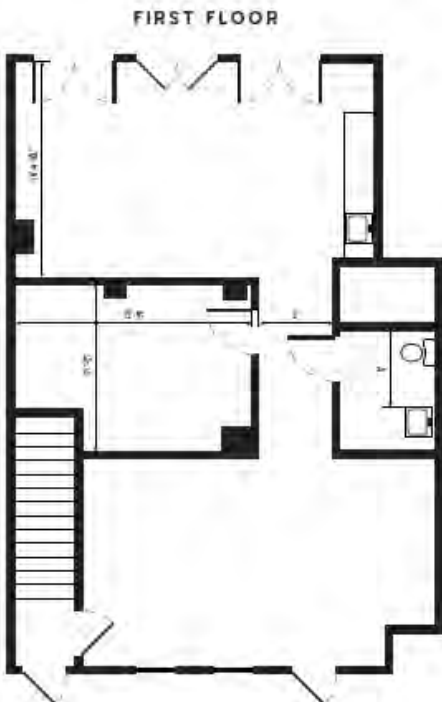
- Ideal small footprints for start-ups, tech companies and entrepreneurs
- Premier signage options along the highly-trafficked Liberties Walk corridor
- Unmatched neighborhoods amenities and location
- Flexible lease terms available

Floorplan Examples

1,019 SF Available



846 SF Available



Location



 Septa Subway

 Septa Bus

 Septa Trolley

Foods/Restaurants

- | | | |
|-------------------|-------------------|----------------------|
| 1. Anejo | 7. Gertie | 13. Set No Libs |
| 2. Apricot Stone | 8. Hikari Sushi | 14. SIN Philadelphia |
| 3. Bagels & Co. | 9. Hudson Table | 15. Urban Village |
| 4. D'Olivia Pizza | 10. Jerry's Bar | 16. Starbucks |
| 5. El Camino | 11. One Shot Cafe | |
| 6. Figo Italian | 12. Pera | |

Shopping/Services

- | | |
|---|--------------------------|
| 1. Acme | 6. Operators Club |
| 2. CVS | 7. Orange Theory Fitness |
| 3. Dollar General | 8. Solidcore |
| 4. Heirloom Market | |
| 5. Northern Liberties Business Improvement District | |

Interior photos



Exterior photos



Liberties Walk

Located in the heart of Philadelphia's most coveted neighborhood

Northern Liberties is nothing short of a remarkable fusion of history, of culture, of art and commerce seamlessly woven into the fabric of Philadelphia. Having established itself over recent years as a major hub of year-round activities, festivals, concerts, and events, NoLibs has evolved into an enclave of working professionals, academics, artists, and designers. In addition, the area boasts a diverse array of popular attractions, from microbreweries, pizzerias and cantinas to sushi bars, farmers markets, and fashionable boutiques.



For leasing information, contact:

Eric Berkowitz
Senior Associate
Eric.Berkowitz@jll.com
+1 610 416 2226

Alex Breitmayer
Managing Director
Alex.Breitmayer@jll.com
+1 267 303 6755

Mitch Marcus
Senior Managing Director
Mitch.Marcus@jll.com
+1 215 429 3275

Jake Marcus
Associate
Jake.Marcus@jll.com
+1 856 905 0454