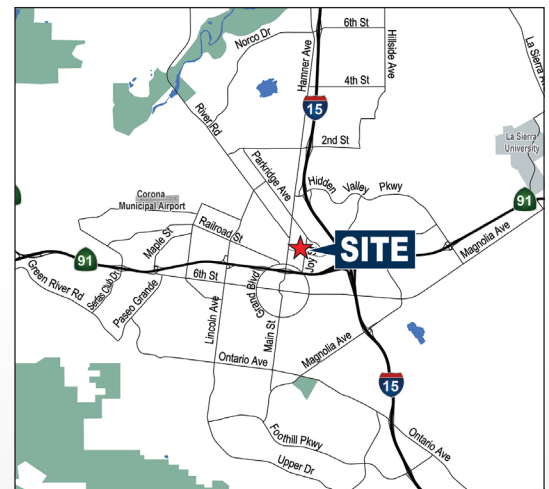




FOR SUBLEASE

- ±2,250 SF Industrial Unit
- 2 Ground Level Doors
- 16' Clear Height (Verify)
- 1 Large Conference Room
- 2 Private Offices
- 2 Restrooms
- Fire Sprinklers: 0.21 GPM /1500 (verify)
- Power: 200 A, 120/208 V (verify)



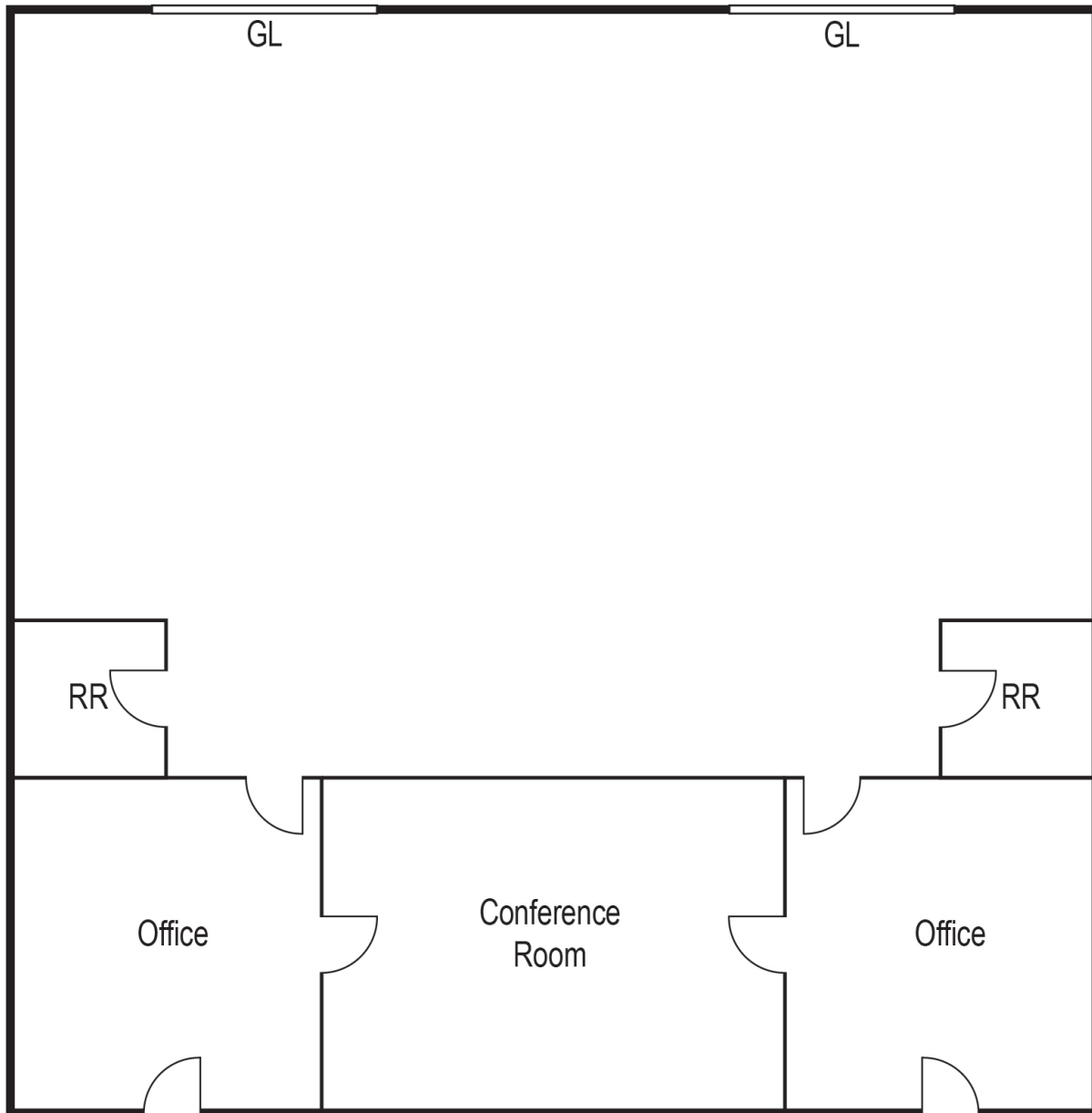
GARRET GILLILAND
Vice President
714.267.0051
GGilliand@voitco.com
Lic#02104669

RYAN MOORE
Executive Vice President
909.545.8011
RMoore@voitco.com
Lic#01821438

Voit
REAL ESTATE SERVICES

FOR SUBLEASE - ±2,250 SF

490 PRINCELAND CT, UNIT 6-7, CORONA, CA



* Site Plan Not To Scale

GARRET GILLILAND

Vice President

714.267.0051

GGilliand@voitco.com

Lic#02104669

RYAN MOORE

Executive Vice President

909.545.8011

RMoore@voitco.com

Lic#01821438