

MARLTON EXECUTIVE PARK

Marlton, NJ

Owned &
Managed By



PROMINENT OFFICE SUITES FOR LEASE

1 Executive Drive

Suites from 2,064 SF up to 35,000 SF

PROPERTY FEATURES

- Owned & managed by reputable Nessel Development
- Immediately available
- Negotiable rental rate
- Fresh lobby upgrades
- Covered parking with solar array
- Common area bathroom upgrades underway
- Building equipped with Fiber Internet - available for tenant use
- Training rooms are available for tenants to rent
- Gym amenity available
- Located off Route 73
- Easy access to Route 70, I-295, NJ Turnpike and AC Expressway
- Access to high-end retail, entertainment and dining



PROPERTY PHOTOS

UPDATED LOBBY AREA



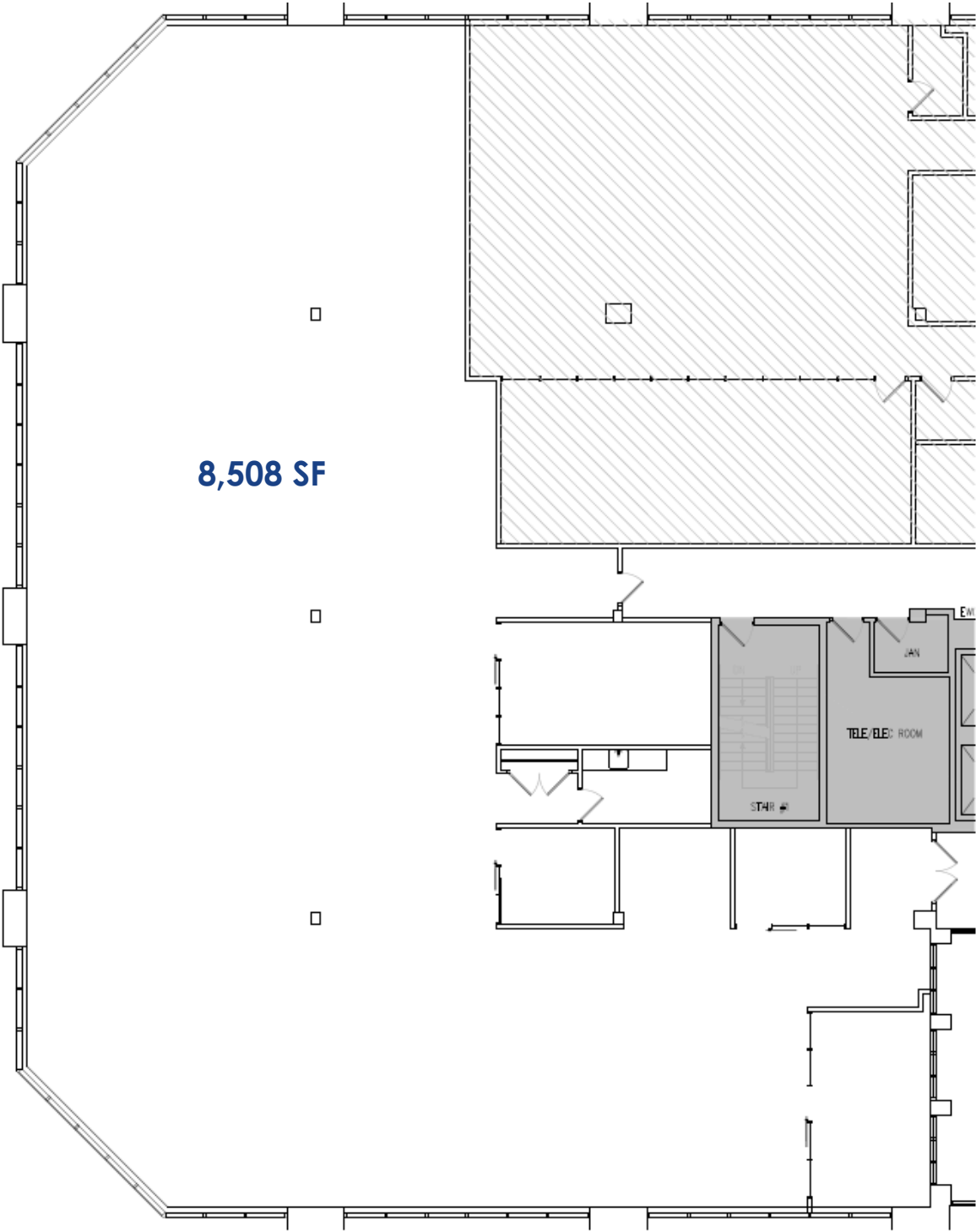
GYM AREA



TRAINING ROOM



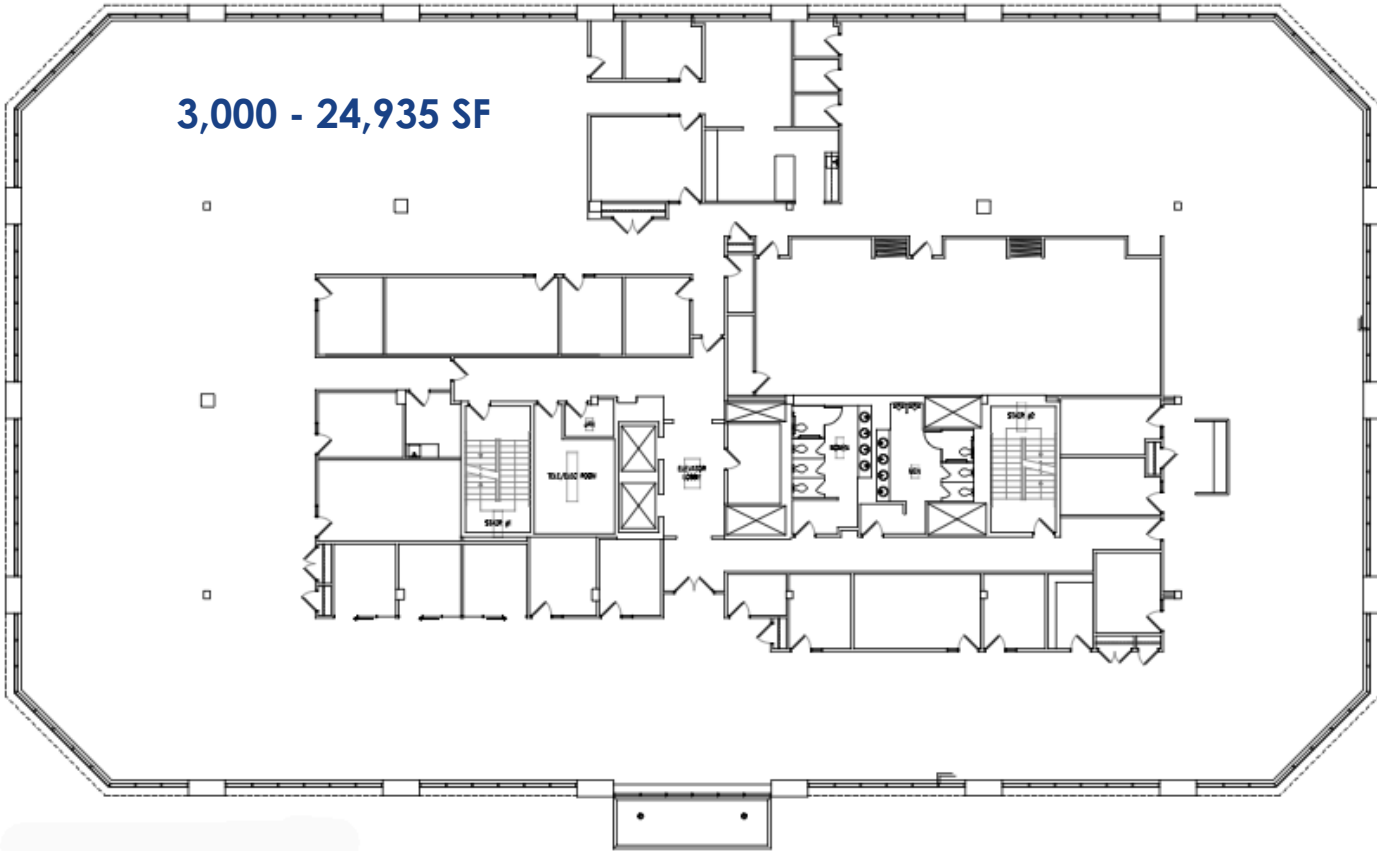
FLOOR PLAN | 1 EXECUTIVE DRIVE | SUITE 200



www.WolfCRE.com

NEW JERSEY | PENNSYLVANIA | NEW YORK

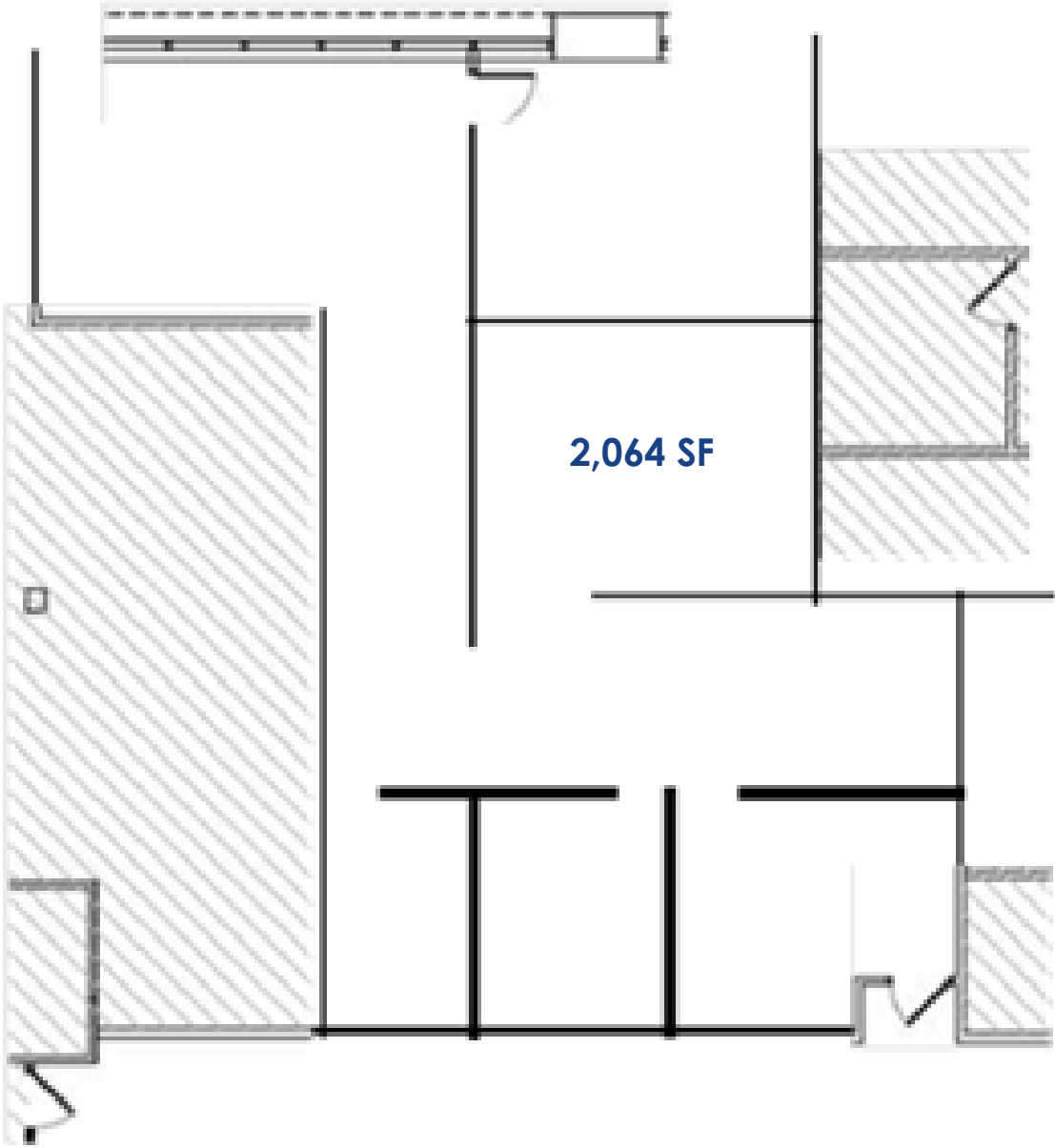
FLOOR PLAN | 1 EXECUTIVE DRIVE | SUITE 300



www.WolfCRE.com

NEW JERSEY | PENNSYLVANIA | NEW YORK

FLOOR PLAN | 1 EXECUTIVE DRIVE | SUITE 440



www.WolfCRE.com

NEW JERSEY | PENNSYLVANIA | NEW YORK

