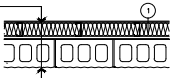
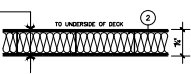


BUILDING 2 FLOOR PLAN

- 1/2" GYP. BOARD
- 6 MIL VAPOR BARRIER
- 6" 20 GA METAL STUDS @ 16" O/C
- R-20 BATT INSULATION
- 5" FRACTURED CMU



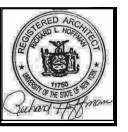
- (1) LAYER 1/2" TYPE X GMB TAPED & FINISHED
- 20 GA x 6" METAL STUDS @ 16" O/C
- CHANNEL BRACING 56" @ 6"
- R-20 BATT INSULATION
- (1) LAYER 1/2" TYPE X GMB TAPED & FINISHED
- SET TRACK IN BED OF CAULK



- 1/2" GMB TAPED & FINISHED
- 20 GA x 3 1/2" METAL STUDS @ 16" O/C
- R-13 BATT INSULATION
- 1/2" GMB TAPED & FINISHED



NOTE:
PROVIDE MOISTURE RESISTANT
GMB BOARD IN TOILET ROOMS



DATE	JAN 10, 2023
SCALE	1/8" = 1'-0"
JOB NO.	19-11-02
REVISED	JULY 12, 2023 AUG 15, 2023

8/15/23 - CHANGED PARTITION AROUND UTILITY ROOM TO FIRE BARRIER
7/12/23 - MODIFIED OPENING LOCATIONS, ADDED KNIX BOX LOCATION