



555 CALIFORNIA STREET

[WATCH THE VIDEO](#)

VORNADO
REALTY TRUST



555 CALIFORNIA STREET

THE MOST ICONIC BUSINESS ADDRESS IN SAN FRANCISCO

A WORLD RENOWNED ADDRESS FOR PREMIER INSTITUTIONS AND AN ICONIC SKYSCRAPER, 555 CALIFORNIA STREET FEATURES 52 FLOORS OF COLUMN FREE FLOORPLATES AND AN ALL ACCESS PASS TO THE BEST SAN FRANCISCO VIEWS.

| | |
|------------------------|--|
| LOCATION | CALIFORNIA STREET BETWEEN MONTGOMERY & KEARNY STREETS |
| BUILDING SIZE | 1.5 MILLION RSF |
| BUILT | 1969 |
| FLOORS | 52 |
| CEILING HEIGHT | 13' SLAB-TO-SLAB |
| NOTABLE TENANTS | ALLIANCE BERNSTEIN BANK OF AMERICA CENTERVIEW PARTNERS DODGE & COX GOLDMAN SACHS KKR KIRKLAND & ELLIS MICROSOFT MCKINSEY & COMPANY MORGAN STANLEY UBS WELLS FARGO |





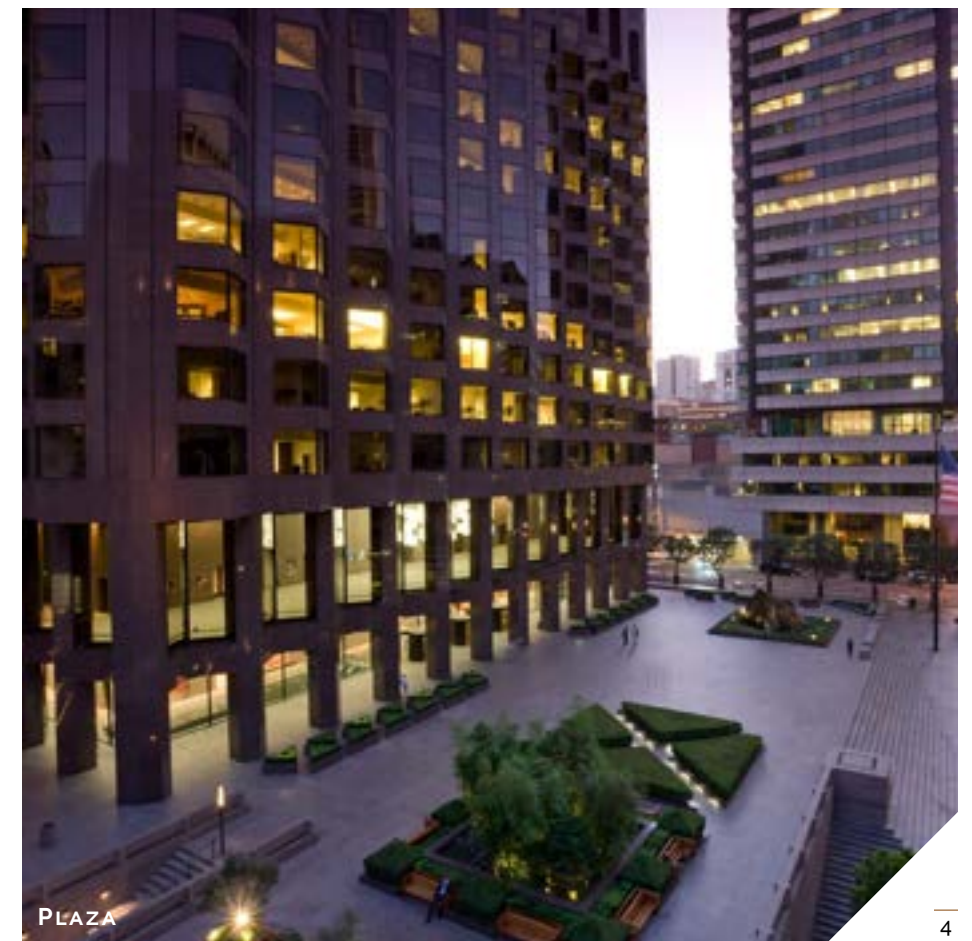
555 CALIFORNIA STREET



SKYLINE



CONCOURSE ENTRANCE



PLAZA



IN THE CENTER OF IT ALL

THE CENTRAL PLACEMENT OF THE 555 CALIFORNIA STREET CAMPUS - ON THE CABLE CAR LINE, BLOCKS FROM UNION SQUARE, SOMA, THE EMBARCADERO, AND THE BART/MUNI - OFFERS AN UNRIVALED LOCATION FOR EMPLOYEES. WITH ON-SITE PARKING AND EASY ACCESSIBILITY FROM THE HIGHWAY, THE CAMPUS TRULY HAS IT ALL.

HOTELS

- 1 HOTEL
- CLIFT HOTEL
- FAIRMONT
- FOUR SEASONS
- HYATT REGENCY
- OMNI HOTEL
- PALACE HOTEL
- RITZ CARLTON

COFFEE SHOPS

- BLUE BOTTLE
- COFFEE BAR KEARNEY
- PEETS COFFEE
- PHILZ COFFEE
- LAUNCH PAD

GYMS

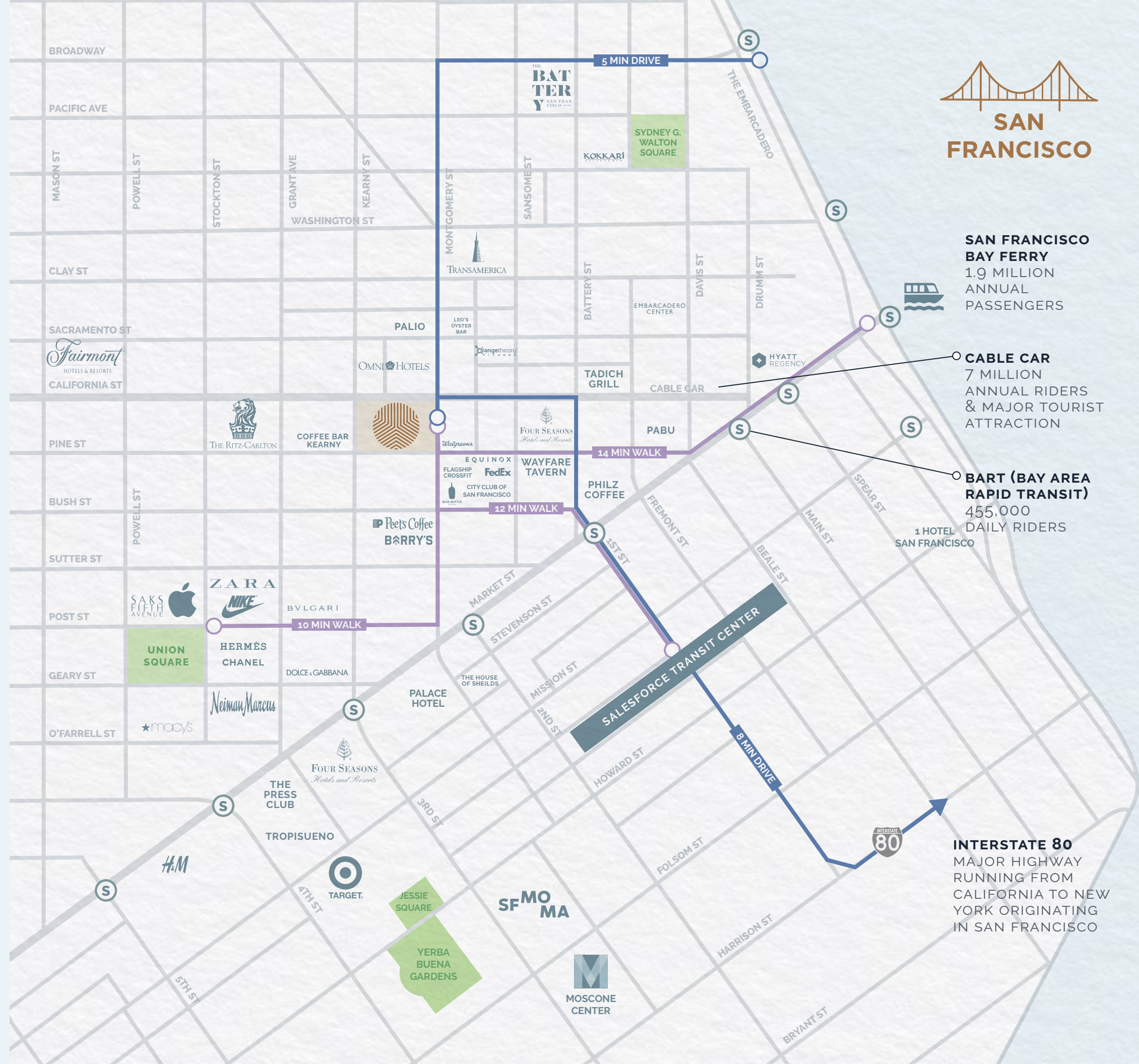
- BARRY'S FIDI
- BAY CLUB
- EQUINOX
- FLAGSHIP CROSSFIT
- ORANGETHEORY FITNESS

RESTAURANTS

- BATTERY
- HOUSE OF SHIELDS
- KOKKARI ESTIATORIO
- LEO'S OYSTER BAR
- PABU
- PALIO D'ASTI
- PRESS CLUB
- TADICH GRILL
- VAULT GARDEN
- VAULT STEAKHOUSE
- TROPISUENO
- WAYFARE TAVERN

CONVENIENCE

- A SHOE SHINE
- FED EX
- POKE BAR
- PROPER FOOD
- WALGREENS





315 555 345

SAN FRANCISCO'S PREMIER OFFICE COMPLEX

FULL 3 1.8
CITY BLOCK BUILDINGS MILLION SF

315 MONTGOMERY STREET

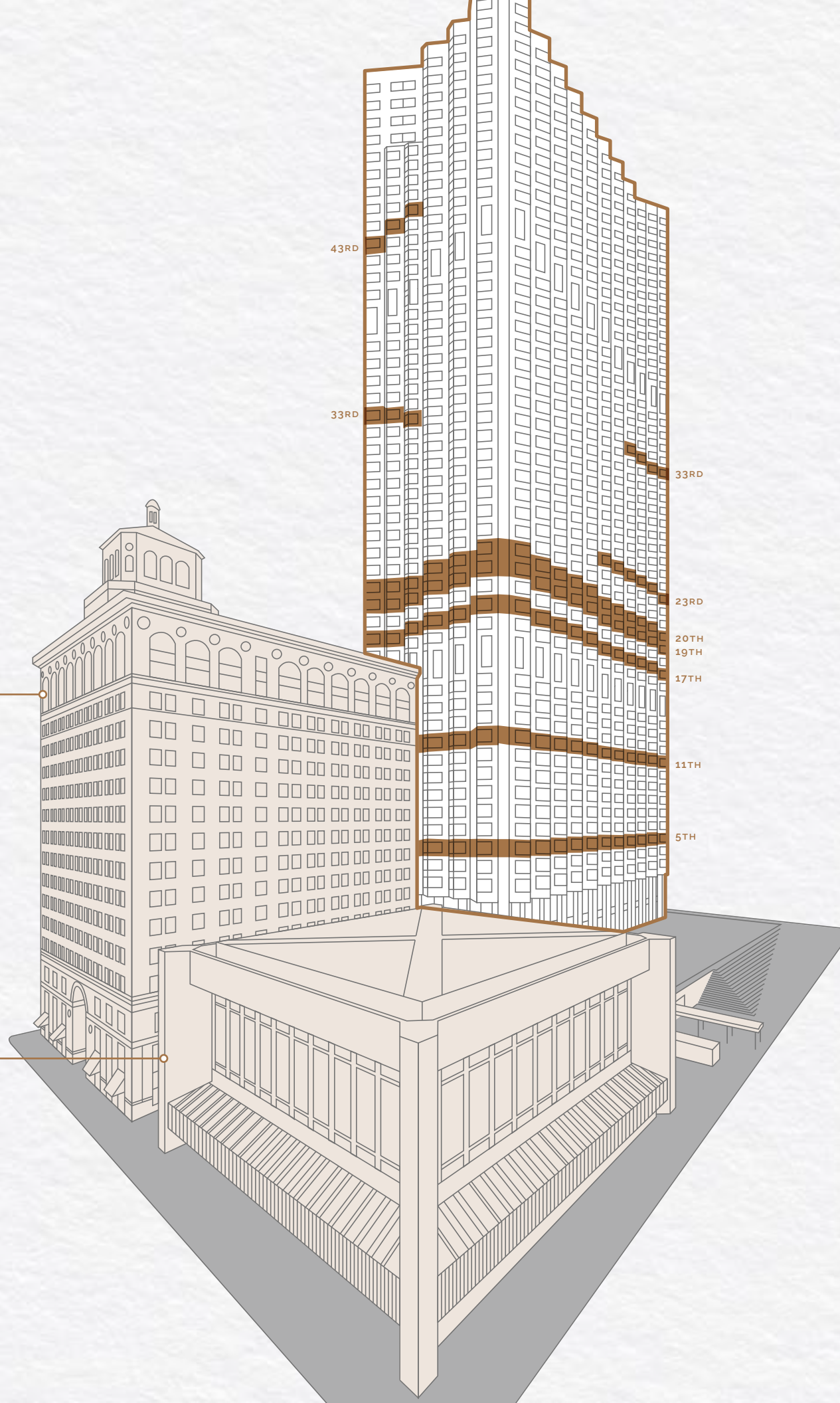
A TIMELESS 1920'S FACADE FEATURING OPEN FLOORPLATES FRAMED BY ELEGANT ARCHED WINDOWS AND EXPOSED BRICK WALLS, IDEAL FOR TODAY'S TENANTS SEEKING CLASSIC YET MODERN OFFICES.

THE CONCOURSE

LINKED ABOVE AND BELOW GROUND, THE NEWLY MODERNIZED INTERCONNECTION OF 555, 315 AND 345 PROVIDES PRIME ACCESS TO RETAIL AND BAY CLUB FITNESS CENTER, OVER 700 PARKING SPACES, PRIVATE TOWN HALL, AND OUTDOOR SPACE ON THE PUBLIC PLAZA.

345 MONTGOMERY STREET

ANCHORED BY A DRAMATIC FIVE-STORY ATRIUM, THIS HISTORIC BUILDING IS FULLY LEASED TO THE WHARTON SCHOOL OF BUSINESS, UNITING TIMELESS DESIGN WITH AN INNOVATIVE ACADEMIC ENVIRONMENT.

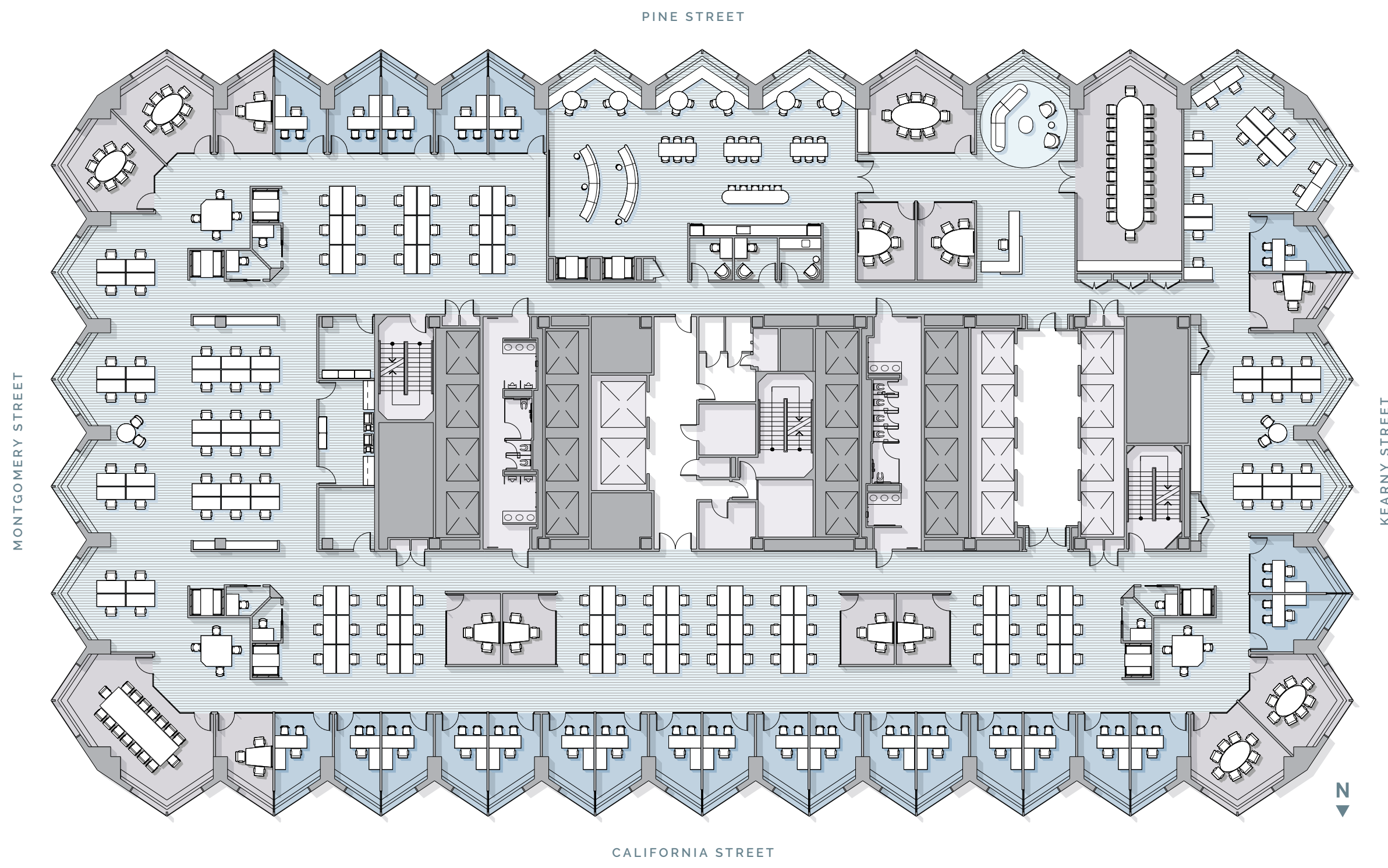


555 CALIFORNIA STREET

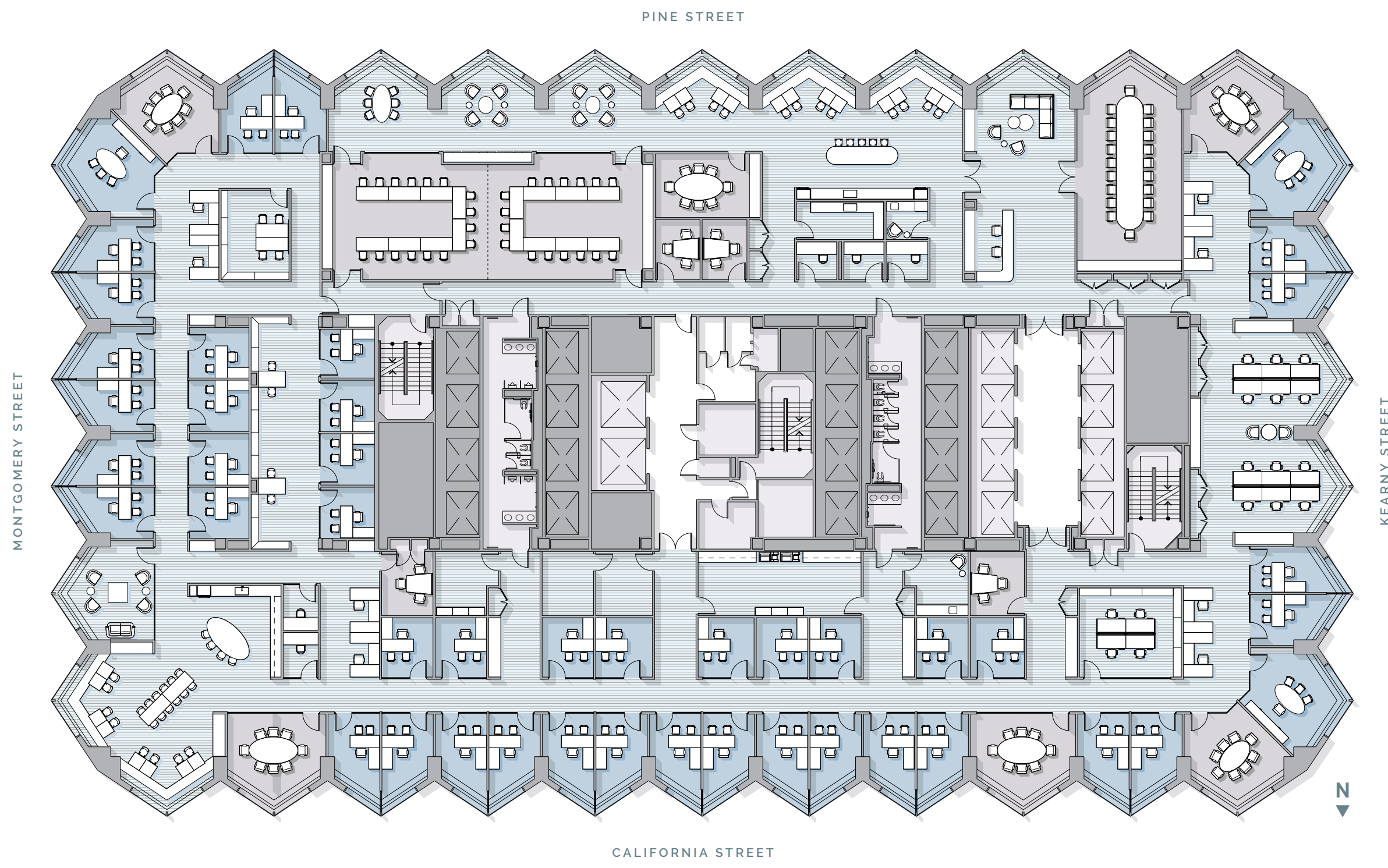
AVAILABILITIES

| FLOOR | RSF | AVAILABILITY DATE |
|------------|--|-------------------|
| 43RD FLOOR | 4,460 (PREBUILD) | Q3 2026 |
| 33RD FLOOR | 2,565 (PREBUILD) 2,618 (PREBUILD) | Q3 2026 |
| 23RD FLOOR | 7,623 (PREBUILD) | Q3 2026 |
| 20TH FLOOR | 30,928 | Q3 2026 |
| 19TH FLOOR | 30,934 | Q3 2026 |
| 17TH FLOOR | 6,246 (PREBUILD) 6,982 (PREBUILD) 17,751 | Q3 2026 |
| 11TH FLOOR | 30,069 | Q3 2026 |
| 5TH FLOOR | 27,180 | Now |

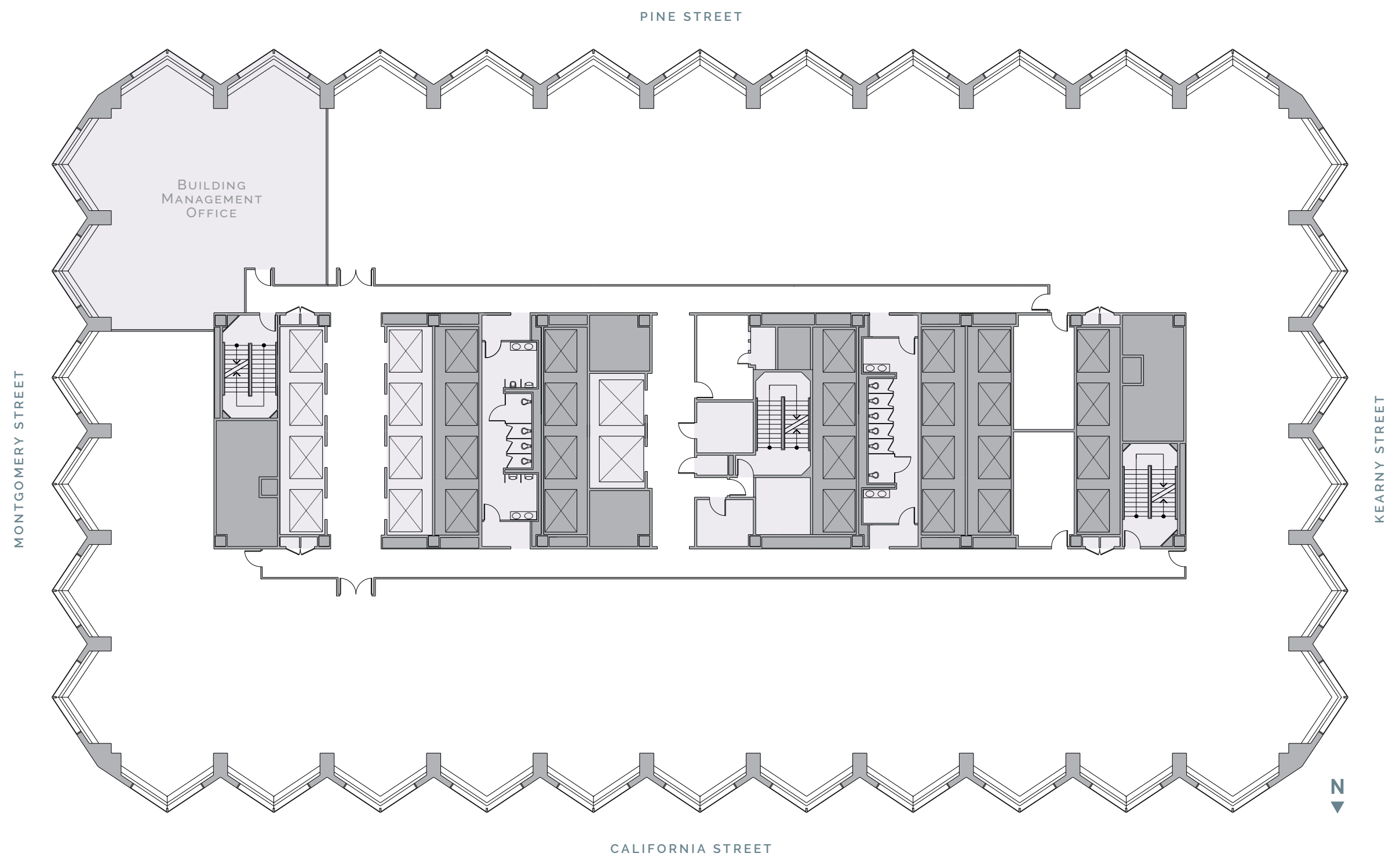
61,862 RSF
BLOCK
INTERCONNECTING STAIR

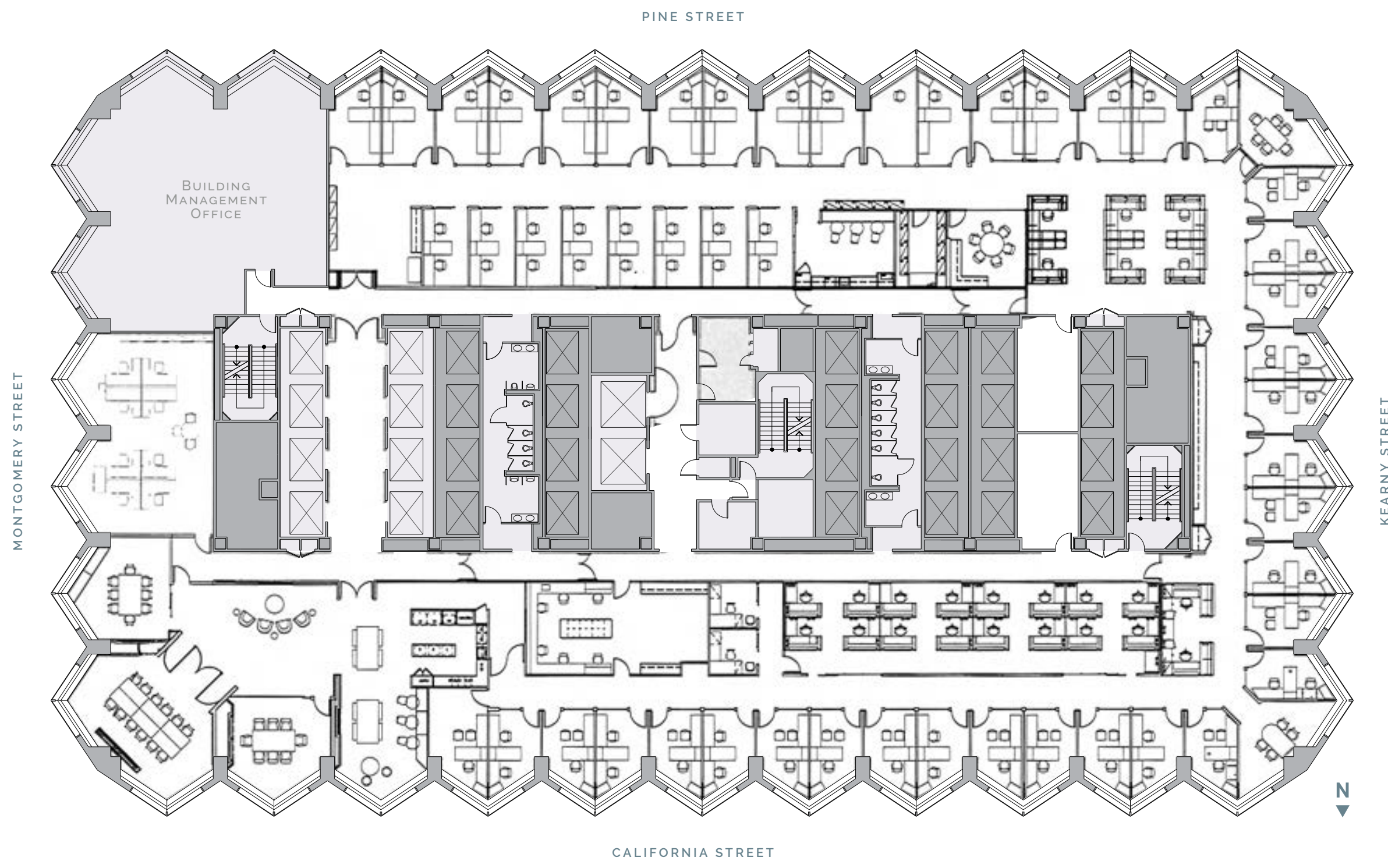


| | |
|--------------------------|-----|
| PROGRAMMING | |
| WORKSTATIONS | 125 |
| LARGE CONFERENCE | 1 |
| MEDIUM CONFERENCE | 5 |
| HUDDLE ROOMS | 7 |
| OFFICE | 22 |



| | |
|--------------------|----|
| PROGRAMMING | |
| WORKSTATIONS | 20 |
| LARGE CONFERENCE | 3 |
| MEDIUM CONFERENCE | 6 |
| HUDDLE ROOMS | 4 |
| OFFICE | 46 |





PROGRAMMING

| | |
|---------------------------|----|
| WORKSTATIONS | 25 |
| LARGE CONFERENCE | 1 |
| MEDIUM CONFERENCE | 4 |
| OFFICE | 52 |
| OPEN COLLABORATION | 2 |



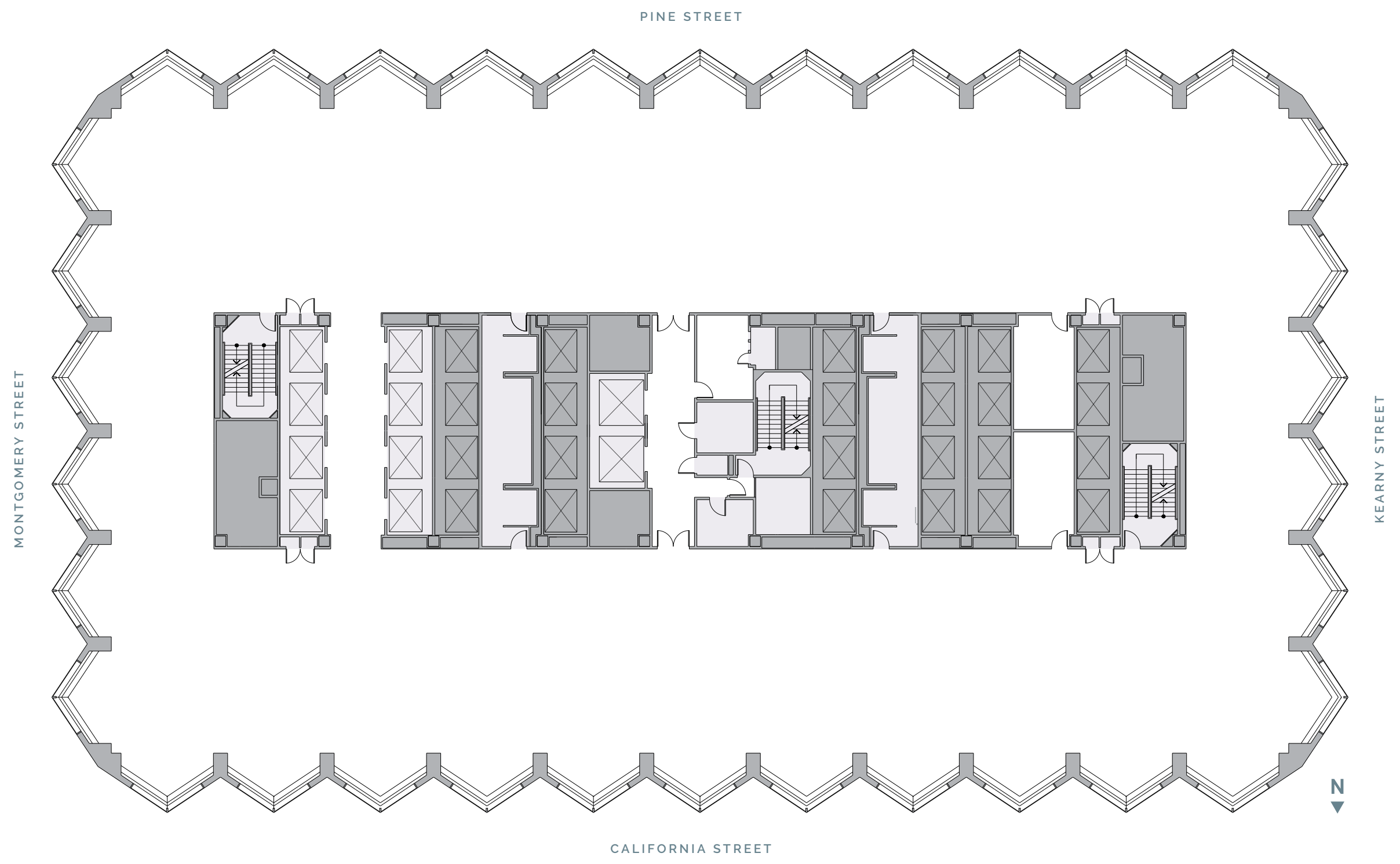
NORTHWEST

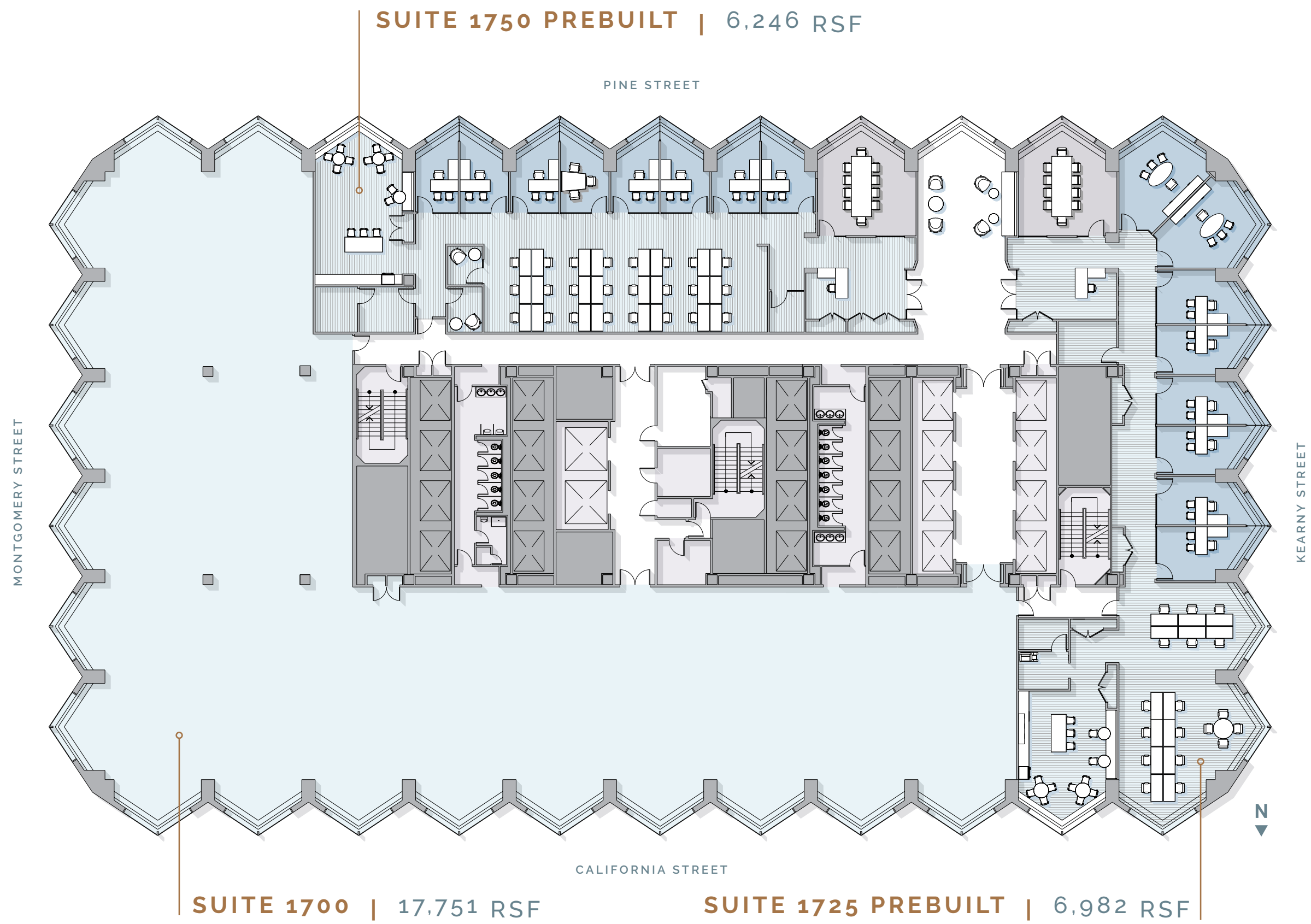


NORTH



CONFERENCE ROOM



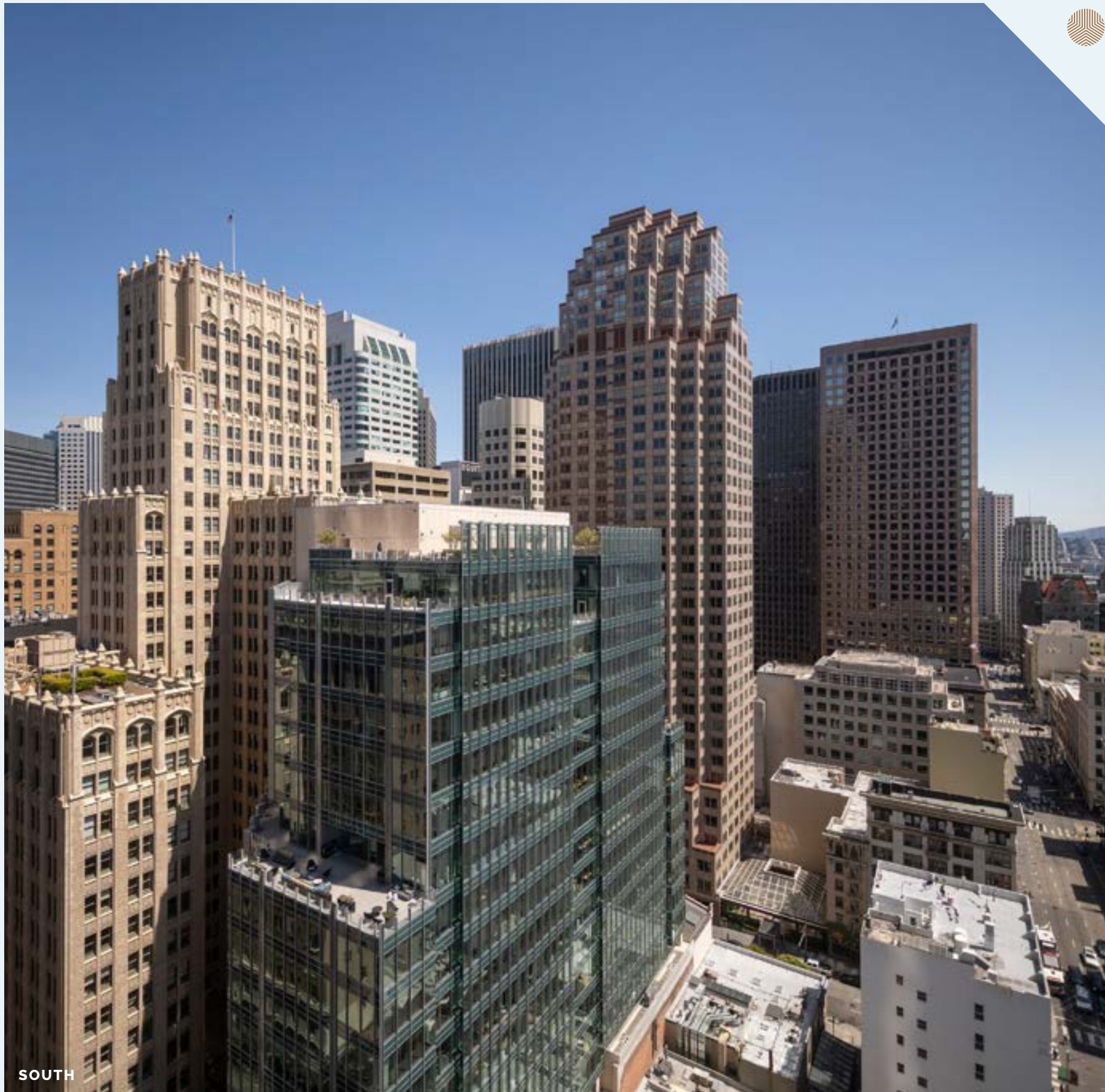


17TH FLOOR | 17,751 RSF + 6,982 RSF + 6,246 RSF





WEST

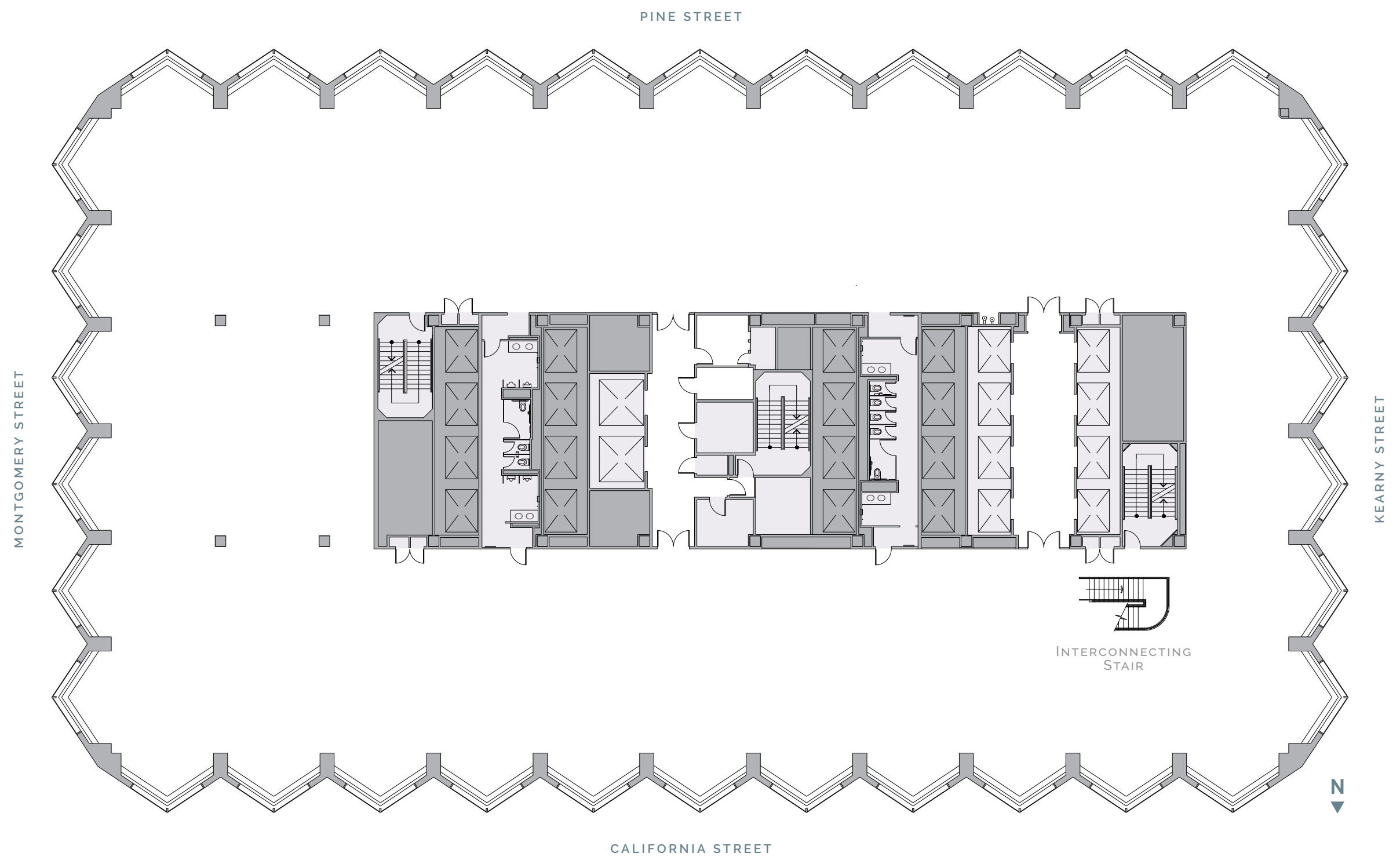


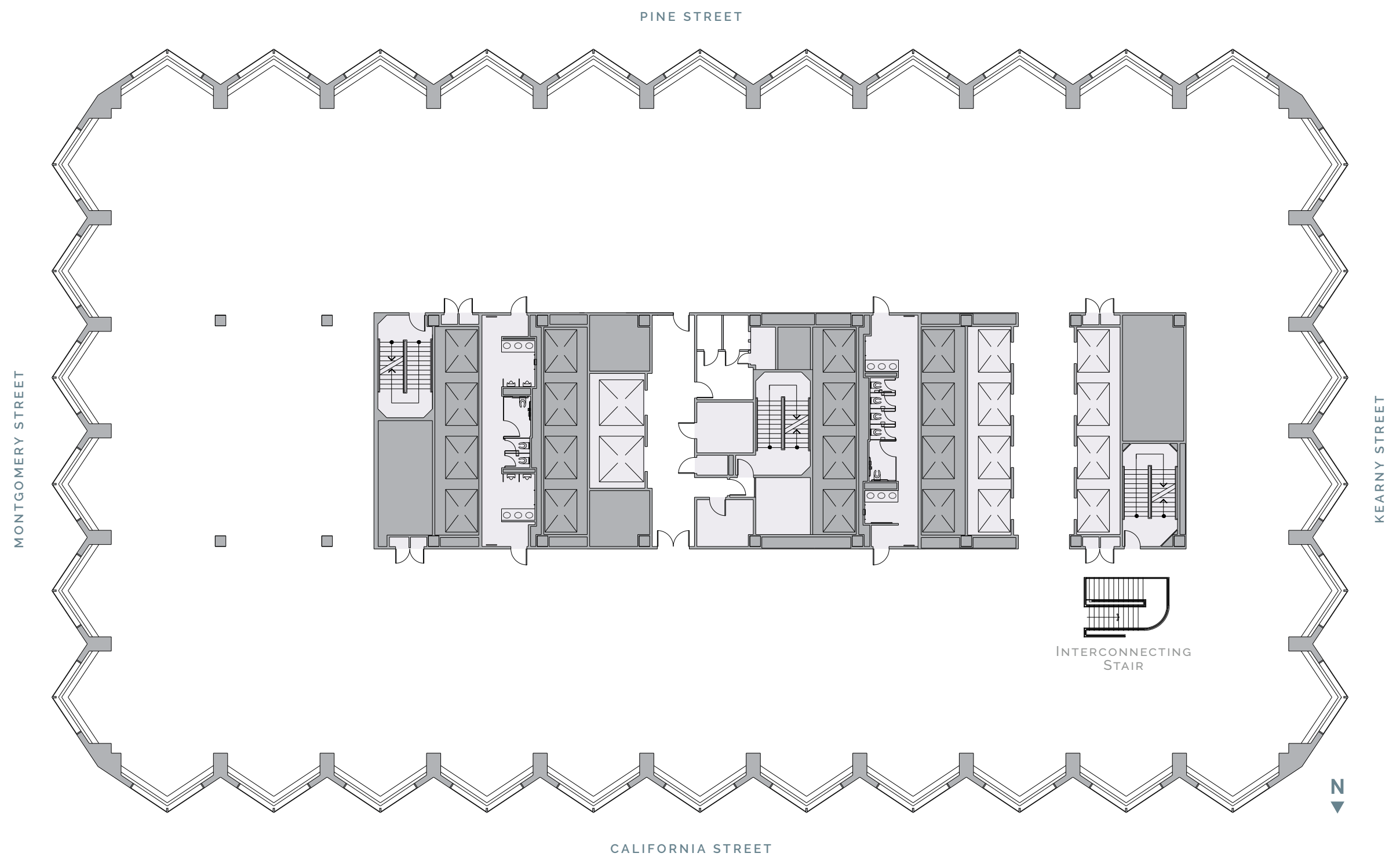
SOUTH



NORTH

17TH FLOOR | VIEWS







NORTH

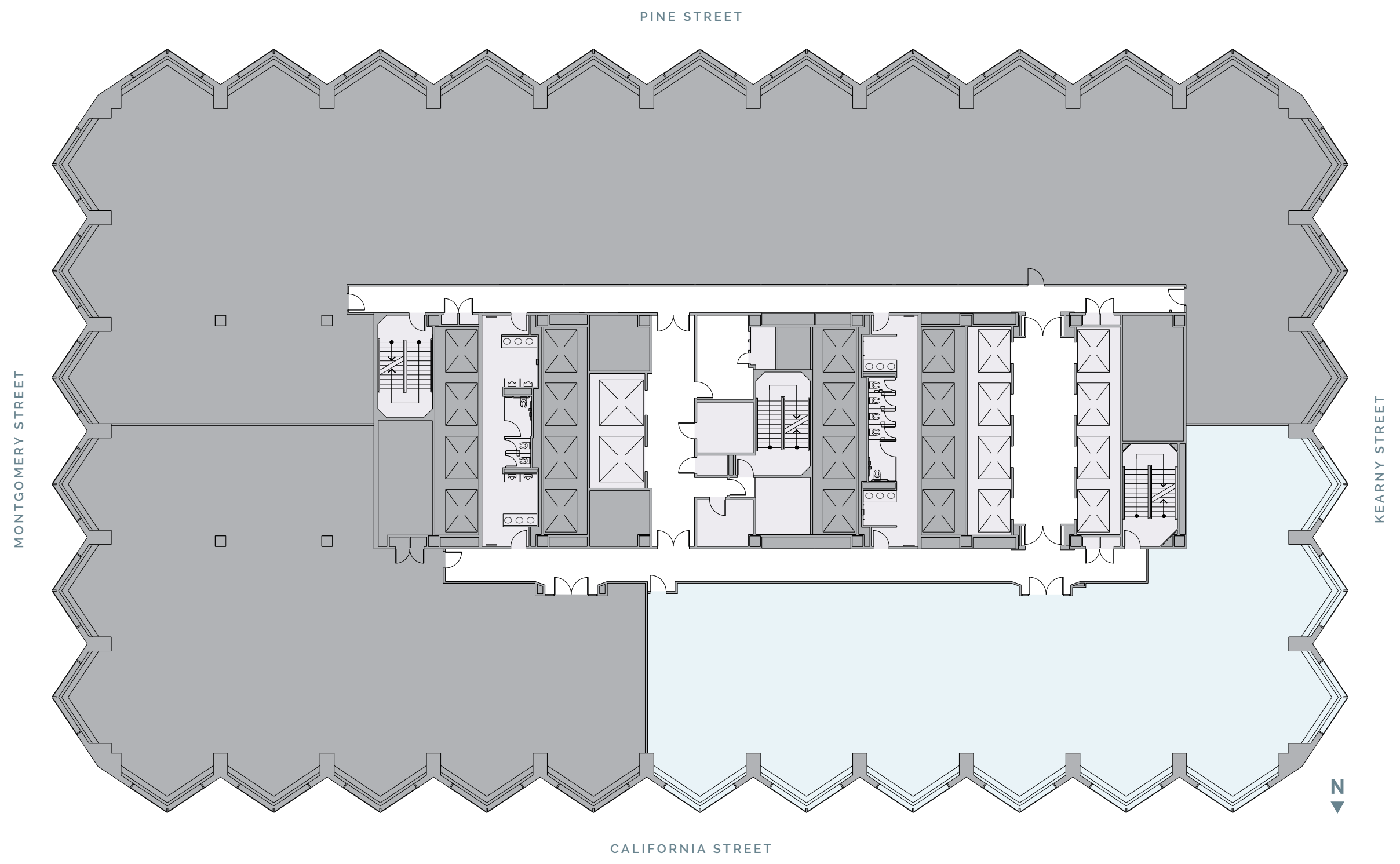


EAST



NORTH

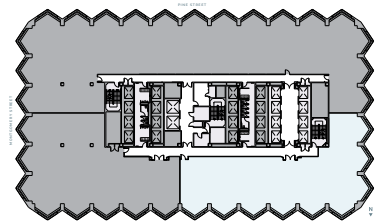
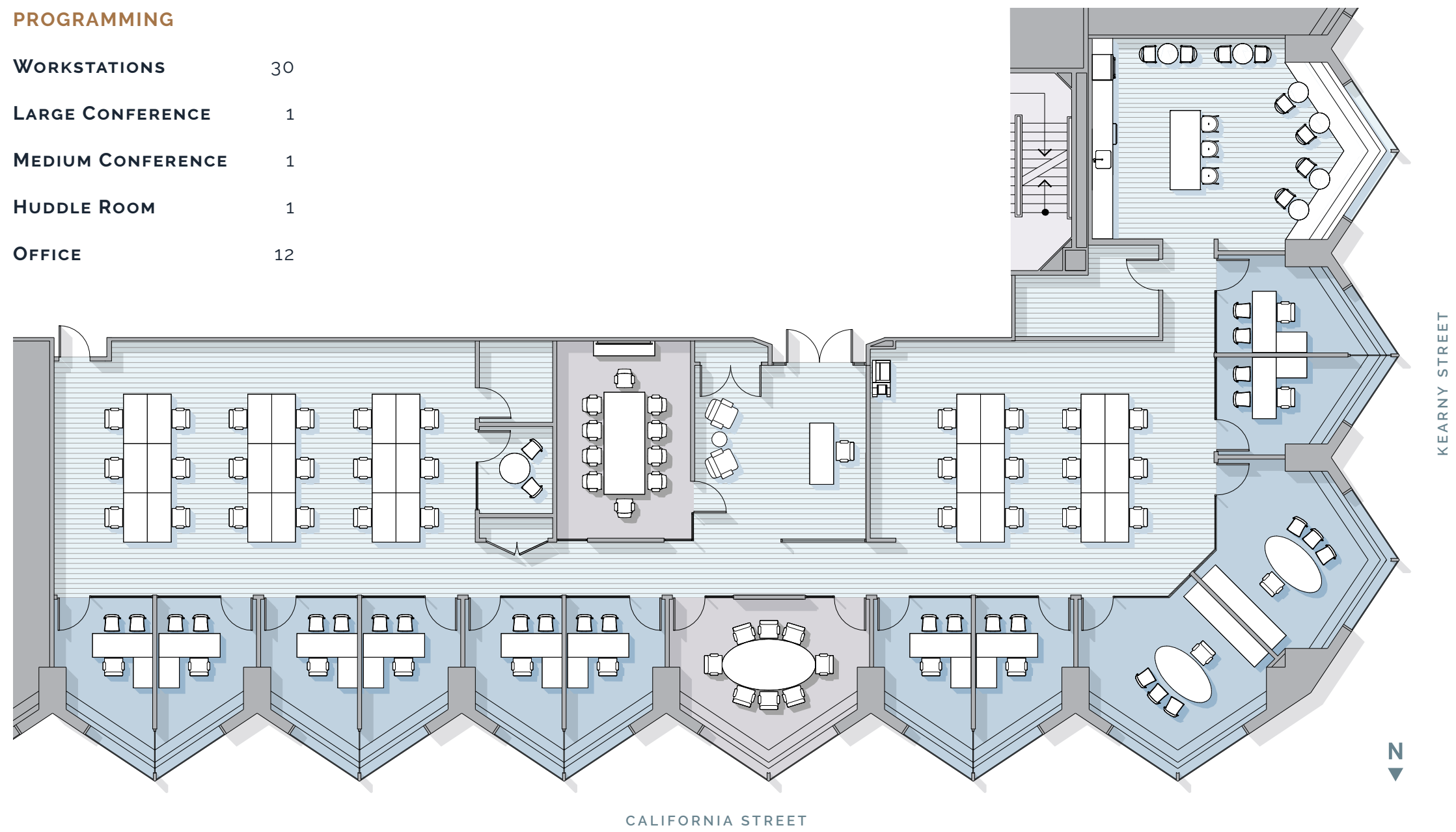
20TH FLOOR | VIEWS





PROGRAMMING

| | |
|--------------------------|----|
| WORKSTATIONS | 30 |
| LARGE CONFERENCE | 1 |
| MEDIUM CONFERENCE | 1 |
| HUDDLE ROOM | 1 |
| OFFICE | 12 |

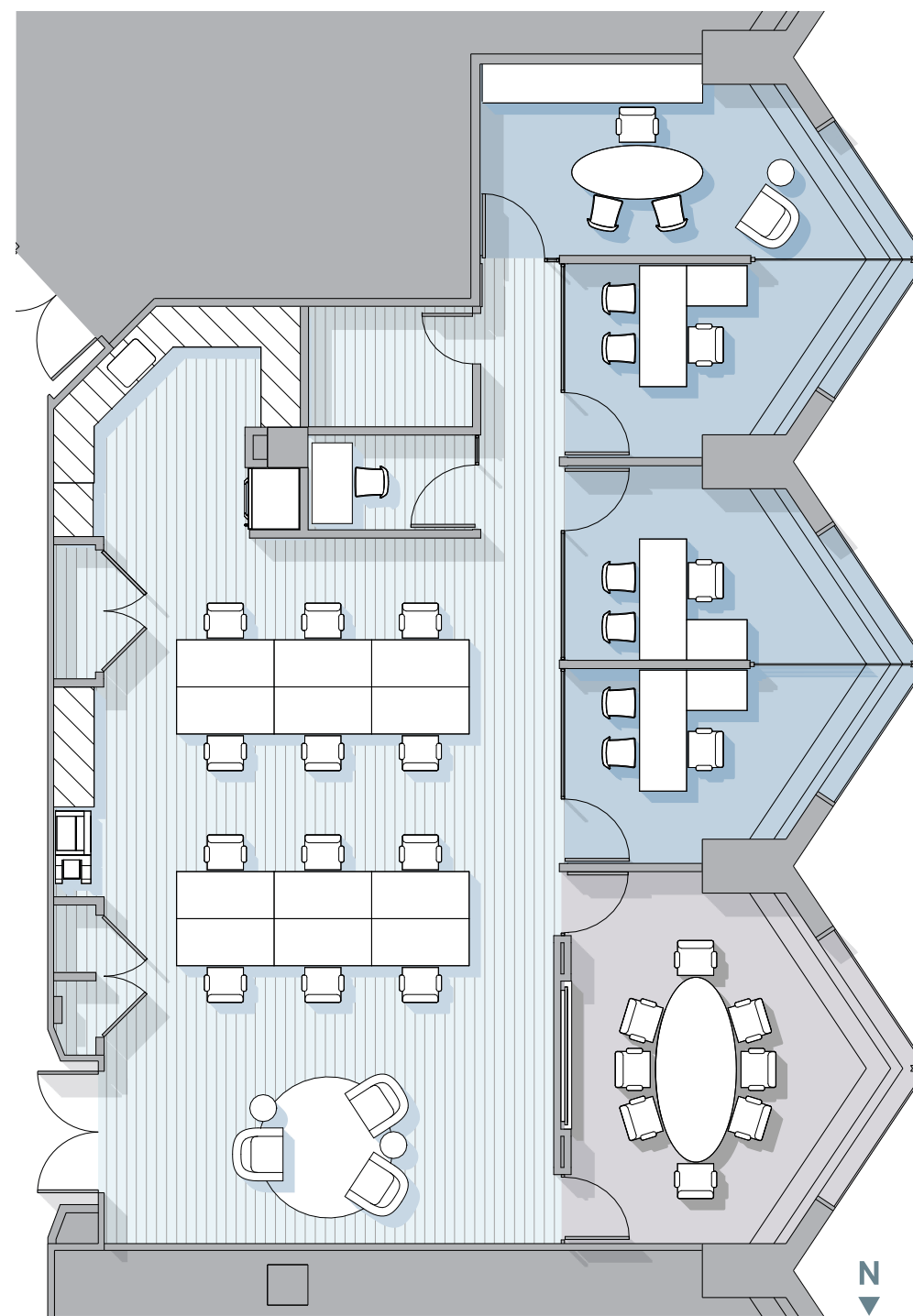
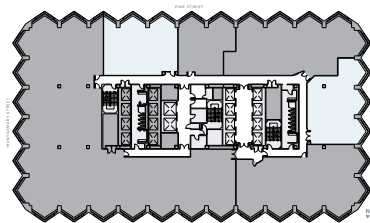




PINE STREET



SUITE 3310 | 2,565 RSF



KEARNY STREET



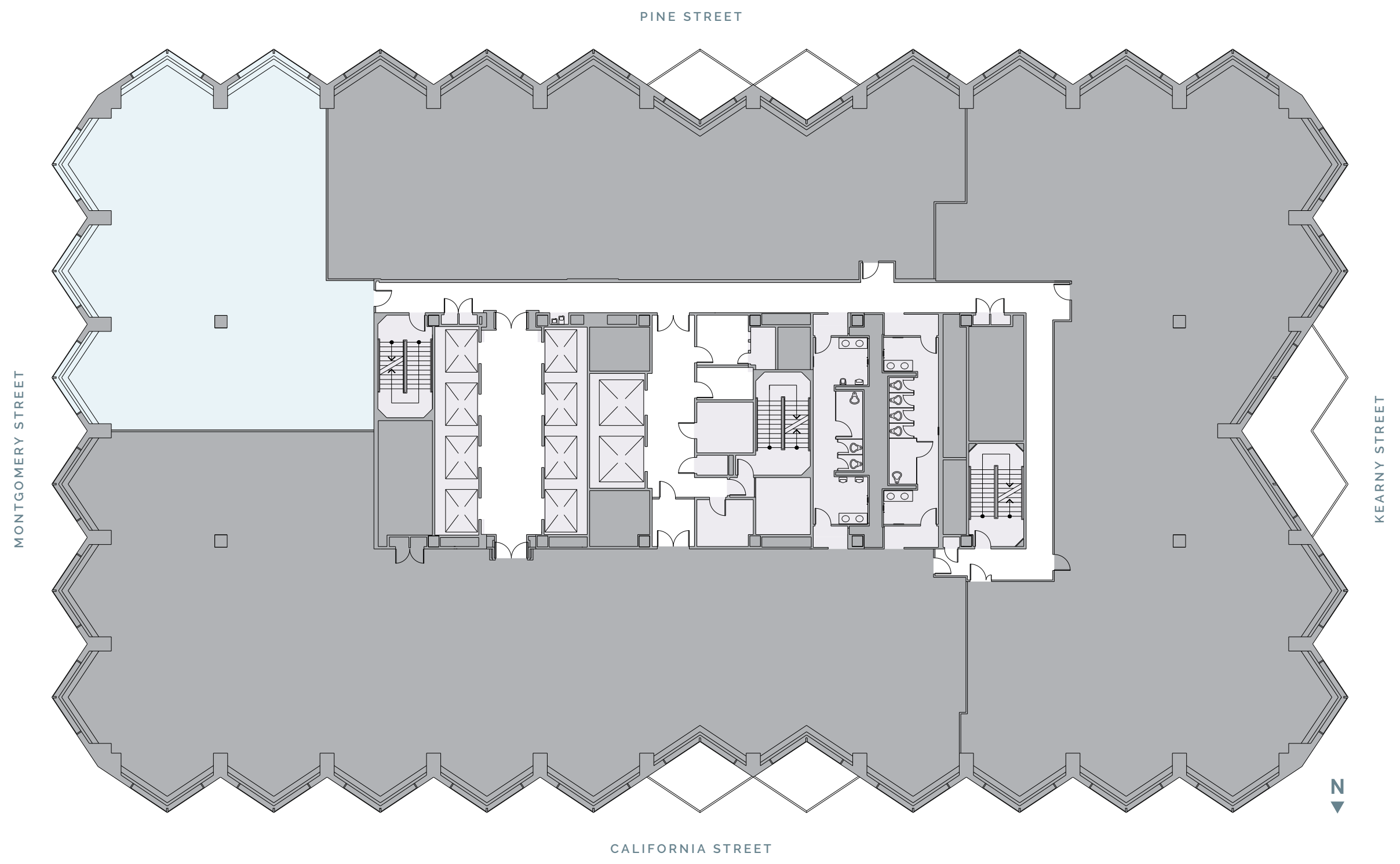
SUITE 3360 | 2,618 RSF

33RD FLOOR PREBUILTS | 2,565 RSF + 2,618 RSF



33RD FLOOR - SUITE 3310 | PREBUILT INTERIOR

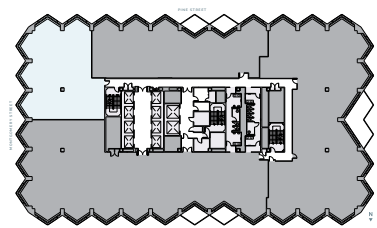
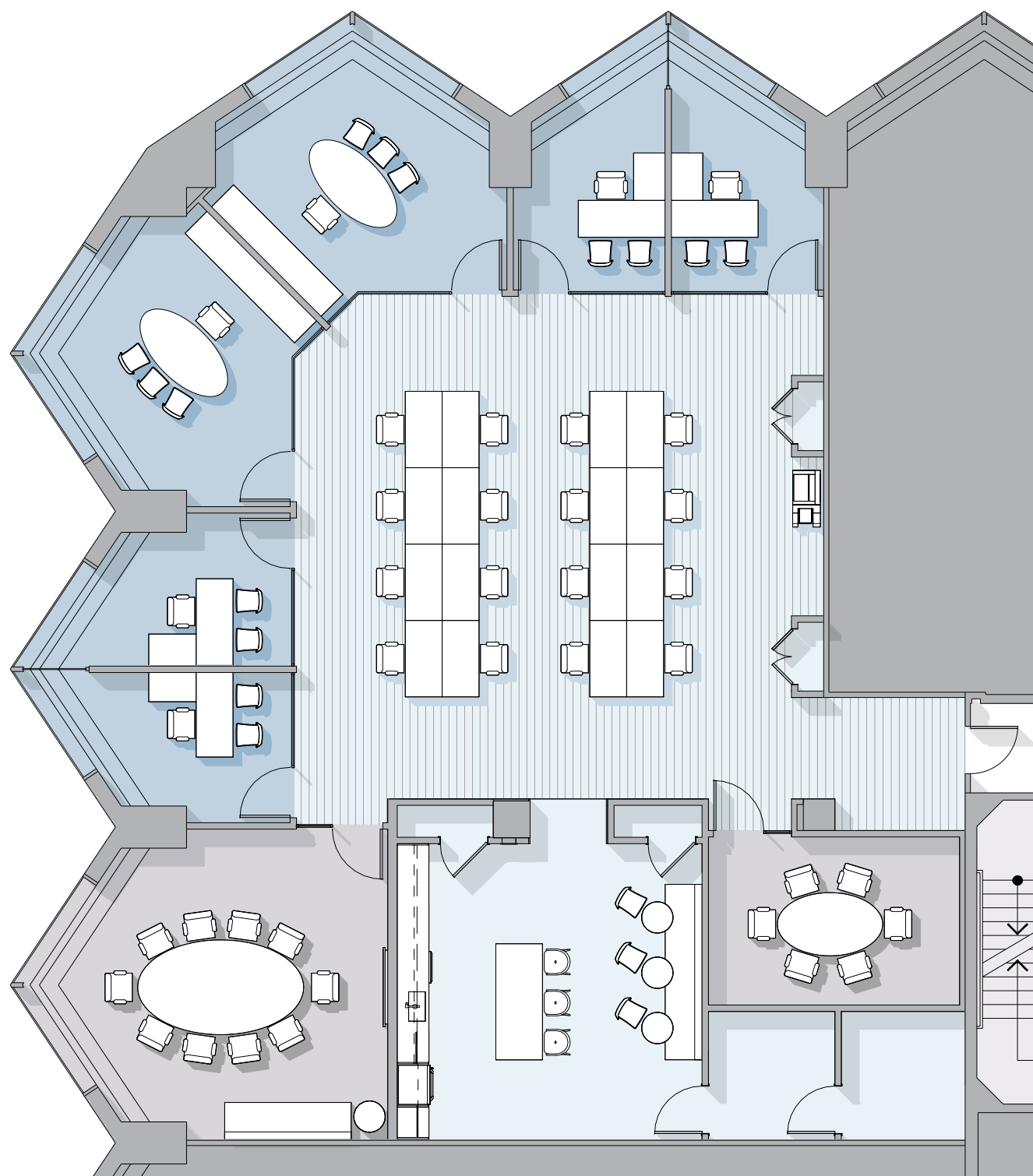






PINE STREET

MONTGOMERY STREET



NEXT GENERATION URBAN CAMPUS



315 555 345

AN INTERCONNECTED COMPLEX OF
DISTINCT BUILDINGS 555 CALIFORNIA STREET,
315 AND 345 MONTGOMERY STREET SEAMLESSLY
JOINED BY A NEWLY MODERNIZED CONCOURSE
AND VAST OUTDOOR SPACE.





315 555 345

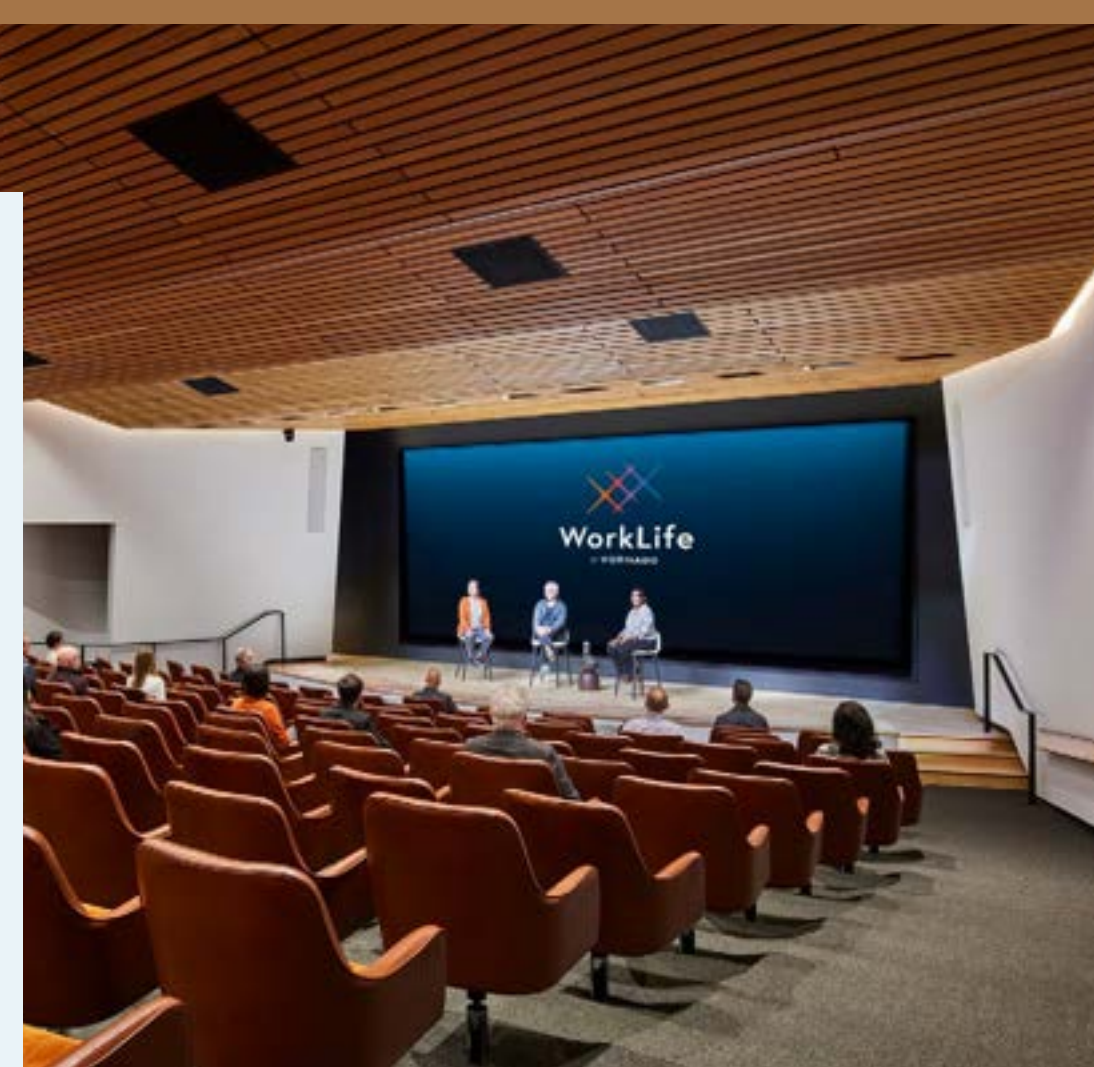
WorkLife

BY VORNADO

WorkLife is an amenity ecosystem for Vornado tenants that allows you to focus on both work and self-care, driven by the convenience of the LIVE. WORK. DO. app.

WorkLife:
Solving For Your Day.

worklifebyvornado.com



WorkLife

BY VORNADO

THE CONCOURSE CONNECTS ALL THREE BUILDINGS AND PROVIDES TENANTS WITH A PLACE TO WORK, GRAB A COFFEE, HOST A CASUAL MEETING OR A BUSINESS LUNCH.

WorkLife STATE-OF-THE-ART
TOWN HALL 150+ SEAT TOWN HALL

dock 713 PARKING SPACES
 68 BIKE PARKING SPACES

Bay Club 20,500 SF MODERN FITNESS
 AND WELLNESS CENTER

Bright Horizons A TRUSTED EDUCATIONAL
 CHILDCARE PROGRAM

THE VAULT A MODERN STEAKHOUSE WITH
 NIGHTLY LIVE PIANO MUSIC

THE VAULT garden A YEAR-ROUND OUTDOOR
 DINING OASIS ON THE UPPER
 555 CALIFORNIA PLAZA

POKÉ BAR **PROPER FOOD** GRAB-N-GO OPTIONS
 PERFECT FOR A QUICK
 LUNCH OR COFFEE BREAK





LIVE. WORK. DO.

THE LIVE. WORK. DO. APP BRINGS THE 555 CALIFORNIA STREET COMMUNITY RIGHT TO YOUR FINGERTIPS. DOWNLOAD FOR ACCESS TO EXCLUSIVE TENANT AMENITIES, OFFERS AND MORE.

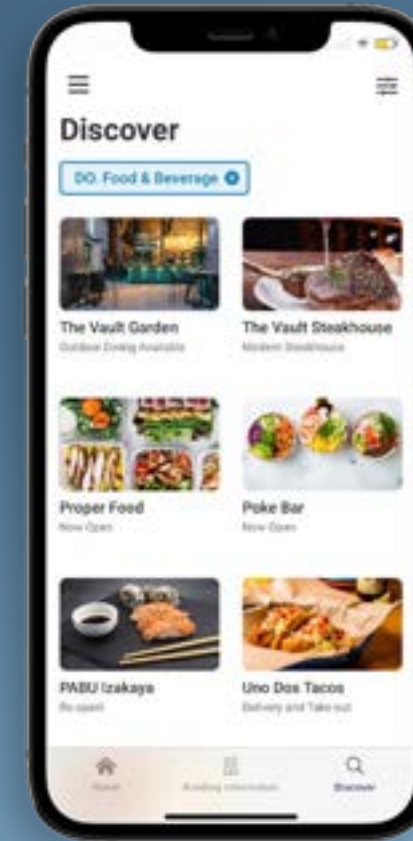
MOBILE ACCESS FOR VISITORS AND GUESTS — 2,322 ONSITE, ACTIVE USERS



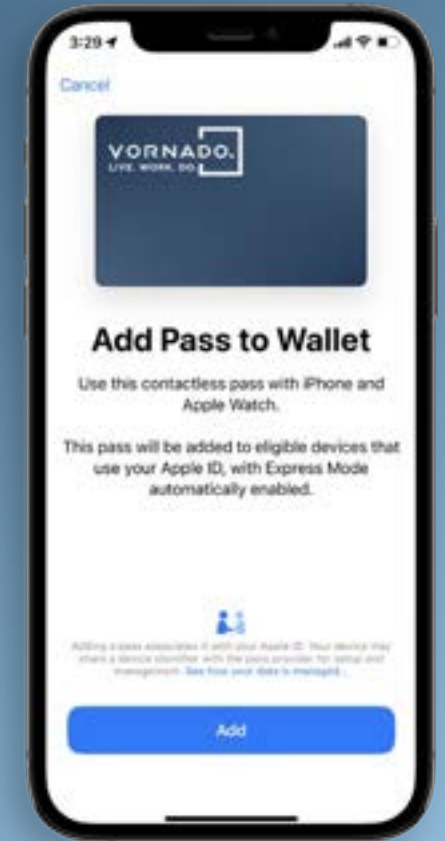
EXCLUSIVE PERKS



WELLNESS OFFERS



LOCAL DINING OPTIONS



MOBILE ACCESS & VISITOR REGISTRATION



SCAN THE CODE WITH YOUR PHONE OR

WorkLife TOWN HALL

STATE-OF-THE-ART 150+ SEAT TOWN HALL WITH CAPACITY FOR 250, AND A 550 SQUARE FOOT EXHIBITION SPACE



TOWN HALL



EXHIBITION SPACE



BACKSTAGE GREEN ROOM



MAIN ENTRANCE



FITNESS FLOOR



LOCKER ROOMS



LAUNCH
COFFEE & ICE CREAM *pad*

GRAB-N-GO OPTIONS PERFECT FOR A QUICK LUNCH OR COFFEE BREAK





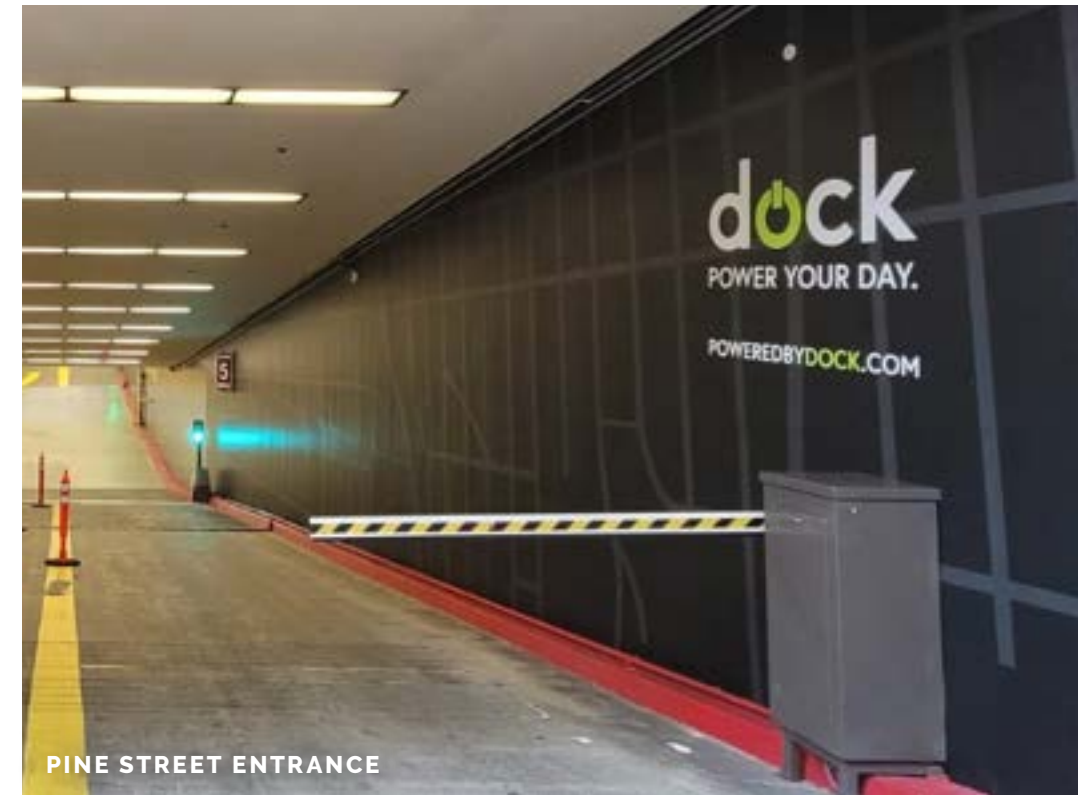
THE VAULT MAIN DINING ROOM



THE VAULT GARDEN SEATING



THE VAULT PRIVATE DINING ROOM



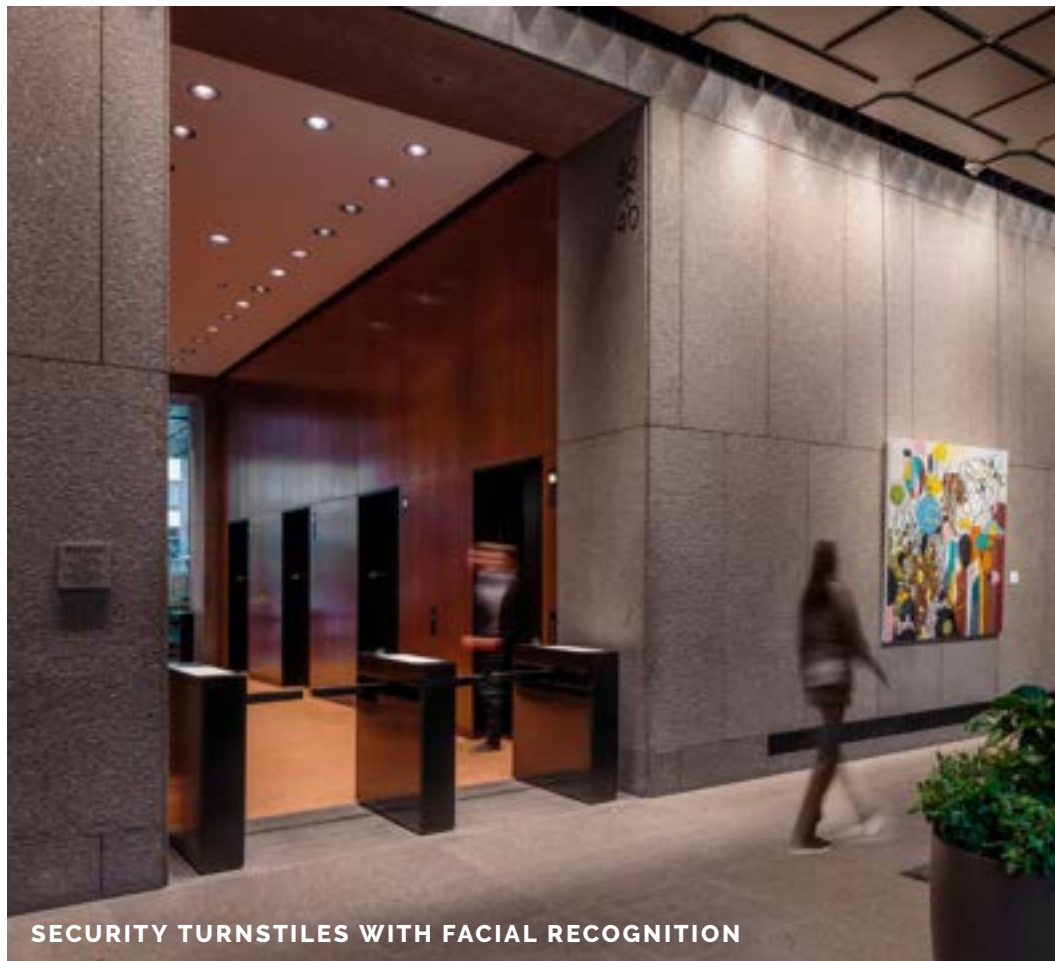
PINE STREET ENTRANCE



BIKE STORAGE



HOSPITALITY TRAINED SECURITY STAFF



SECURITY TURNSTILES WITH FACIAL RECOGNITION



INDOOR AND OUTDOOR HOSPITALITY INSPIRED LOBBY SEATING



VORNADO REALTY TRUST

VORNADO REALTY TRUST HAS BEEN THE PROUD OWNER OF THE ICONIC 555 CALIFORNIA STREET CAMPUS IN SAN FRANCISCO SINCE 2007. AS A FULLY INTEGRATED REAL ESTATE INVESTMENT TRUST ("REIT"), VORNADO MAINTAINS A PORTFOLIO OF PREMIER OFFICE AND RETAIL ASSETS IN MAJOR U.S. CITIES, WITH SAN FRANCISCO REPRESENTING A KEY MARKET ALONGSIDE NEW YORK AND CHICAGO. VORNADO IS A REAL ESTATE INDUSTRY LEADER IN SUSTAINABILITY, WITH 100% OF OUR IN-SERVICE OFFICES BUILDINGS LEED CERTIFIED AND OVER 95% CERTIFIED LEED GOLD OR PLATINUM.



555 CALIFORNIA STREET

CBRE

BILL CUMBELICH

415.291.8882
BILL.CUMBELICH@CBRE.COM

TOM POGGI

415.291.8884
TOM.POGGI@CBRE.COM

ANGUS SCOTT

415.291.4922
ANGUS.SCOTT@CBRE.COM

TRENT HOLSMAN

415.772.0130
TRENT.HOLSMAN@CBRE.COM

JACK BERITZHOFF

415.772.0334
JACK.BERITZHOFF@CBRE.COM

VORNADO
REALTY TRUST

PAUL HEINEN

312.527.7530
PHEINEN@VNO.COM

EDWARD RIGUARDI

212.894.7923
ERIGUARDI@VNO.COM