



500 HOWLAND ST

*Warehouse and office spaces for
lease, ideally located near downtown
Redwood City and US 101*

REDWOOD CITY, CA



*±4,934 SF warehouse in
prime Redwood City location*

Includes mezzanine offices of ±490 SF

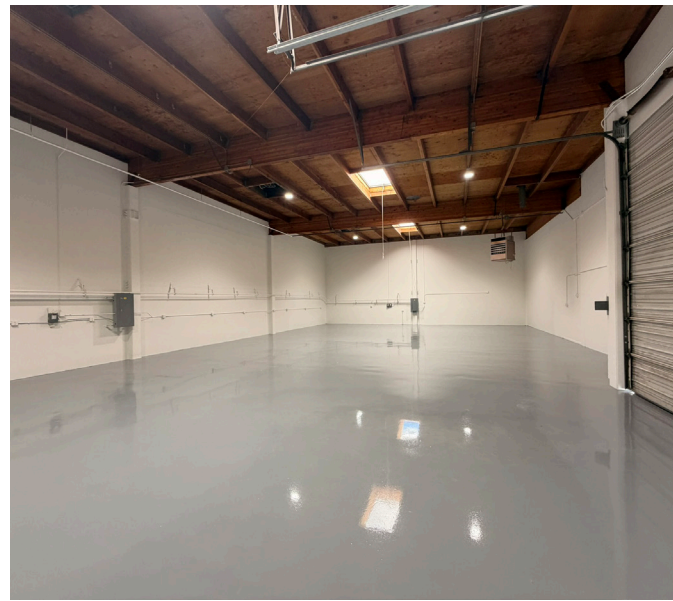
Two drive-in doors

±18' interior clear height

Walking distance to downtown
Redwood City

Quick access to US 101

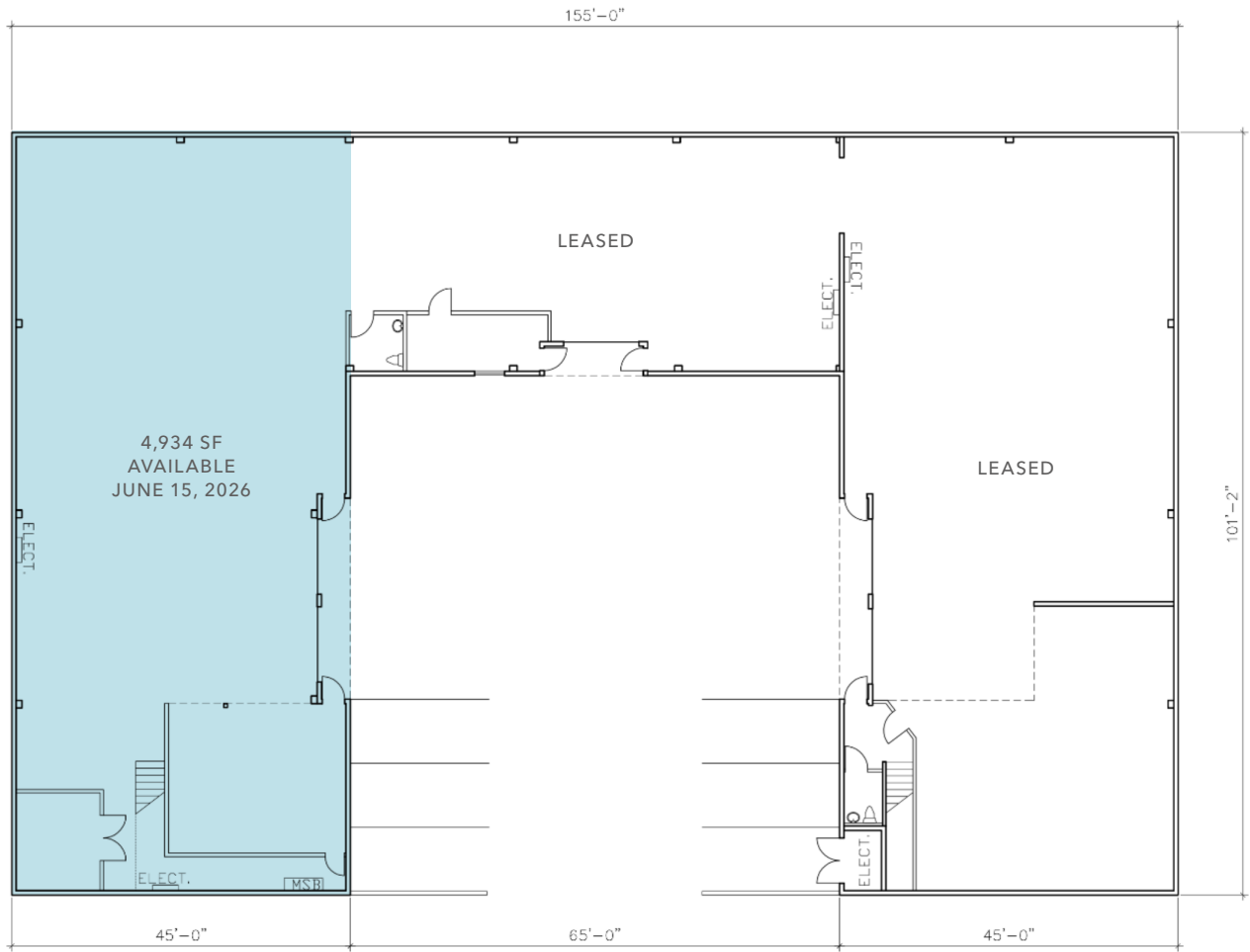
Available June 15, 2026



±18'
CLEAR HEIGHT

06/15/26
AVAILABILITY

GROUND FLOOR PLAN



\$2.65 PSF

RENTAL RATE NNN

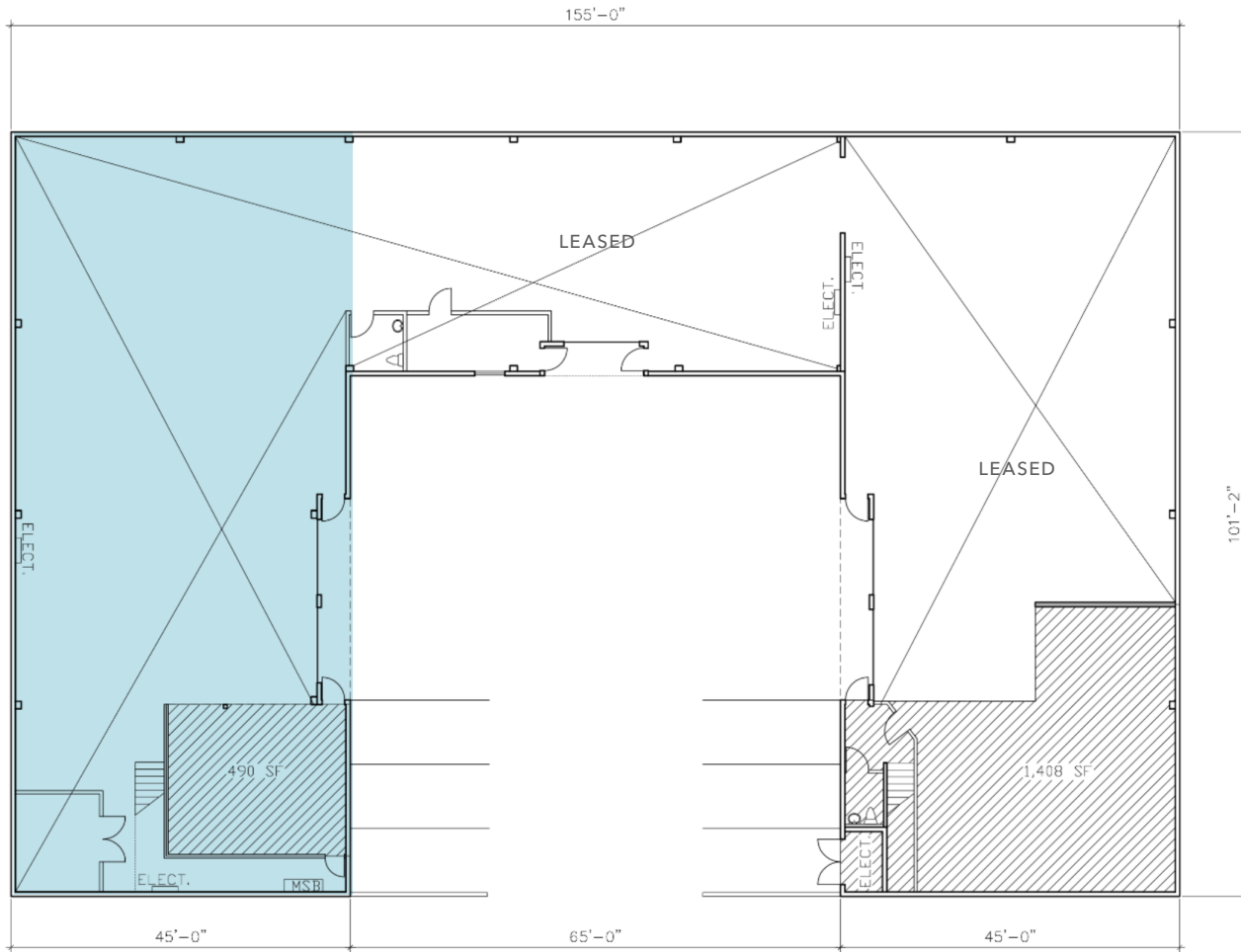
3 - 5 YRS

LEASE TERM NNN

RENTAL RATE	\$2.65 PSF NNN
LEASE TERM	3 - 5 years NNN
AS-IS NNN'S	±\$0.15 PSF
CLEAR HEIGHT	±18'
LOADING DOORS	Two
AVAILABLE	June 15, 2026
SPACE USE	Warehouse/office
SPACE TYPE	Lease

FLOOR PLAN NOT TO SCALE

SECOND FLOOR PLAN



±4,934 SF

AVAILABLE

TWO

LOADING DOORS

18'

CLEAR HEIGHT

FLOOR PLAN NOT TO SCALE



NEARBY AMENITIES

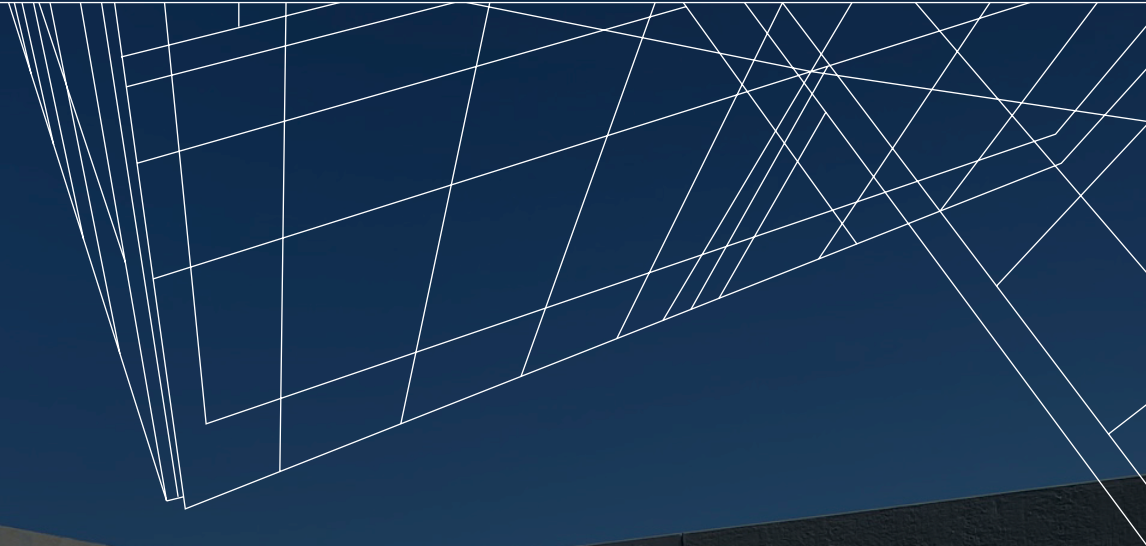
RESTAURANTS & BARS

- | | |
|------------------------------|-----------------------------|
| 01 Estampas Peruanas | 22 Rocknwraps & Kabobs |
| 02 I Dumpling | 23 Zareen's |
| 03 Crouching Tiger | 24 Vino Santo |
| 04 Kemuri Japanese Bar | 25 Vesta |
| 05 Carnitas El Rincon | 26 Milagros Latin Kitchen |
| 06 Panda Express | 27 The Patty Shack |
| 07 La Cocina De La Abuelita | 28 Angelicas |
| 08 Mademoiselle Colette | 29 Las Chiquitas |
| 09 Broadway Masala | 30 La Viga Seafood & Cocina |
| 10 Noah's Ny Bagels | 31 Sizzler |
| 11 Go Fish Poke Bar | 32 Applebees |
| 12 CRU WIN and Bar | 33 Supreme Crab |
| 13 Curry Pizza House | 34 In N Out Burger |
| 14 Qunito Sol | 35 Taco Bell |
| 15 Sakura Teppanyaki & Sushi | 36 L&L Hawaiiin Barbecue |
| 16 Five Guys | |
| 17 Pizza My Heart | |
| 18 Marufuku Ramen | |
| 19 Timber & Salt | |
| 20 The Habi Burger Grill | |
| 21 Talk of Broadway | |

RETAIL

- | |
|--------------------|
| 01 Safeway |
| 02 Whole Foods |
| 03 Kohl's |
| 04 Sports Basement |
| 05 Party City |

500 HOWLAND ST



For more information, contact

BRETT WEBER
650.771.3000
brett.weber@kidder.com
LIC N° 00901454

DREW RAMIREZ
650.430.1433
drew.ramirez@kidder.com
LIC N° 02209477

JOHN MCLELLAN
415.418.9880
john.mclellan@kidder.com
LIC N° 01869489

KIDDER.COM

This information supplied herein is from sources we deem reliable. It is provided without any representation, warranty, or guarantee, expressed or implied as to its accuracy. Prospective Buyer or Tenant should conduct an independent investigation and verification of all matters deemed to be material, including, but not limited to, statements of income and expenses. Consult your attorney, accountant, or other professional advisor. All Kidder Mathews designs are the sole property of Kidder Mathews. Branded materials and layouts are not authorized for use by any other firm or person.

