

**FOR LEASE**  
PROFESSIONAL OFFICE SPACES

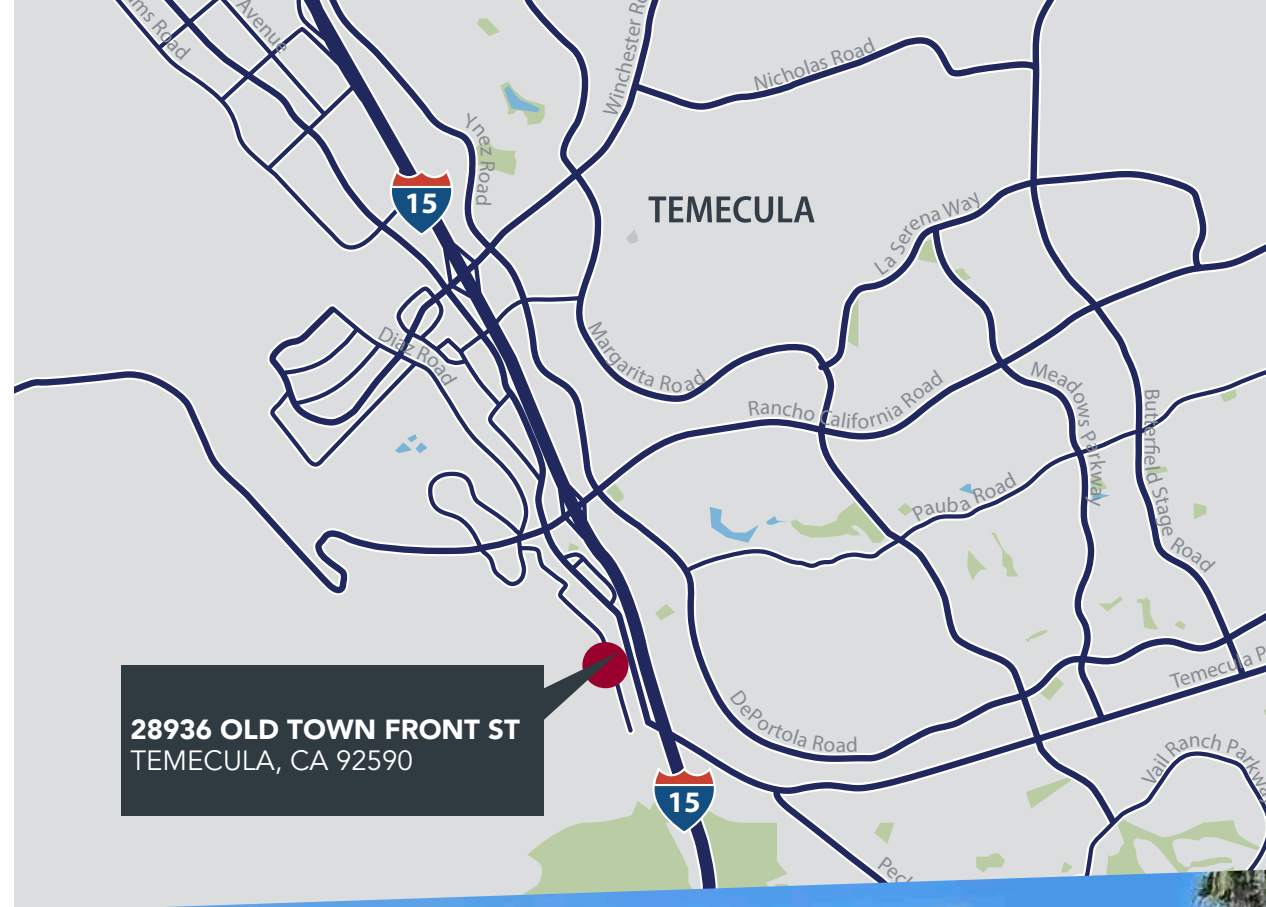


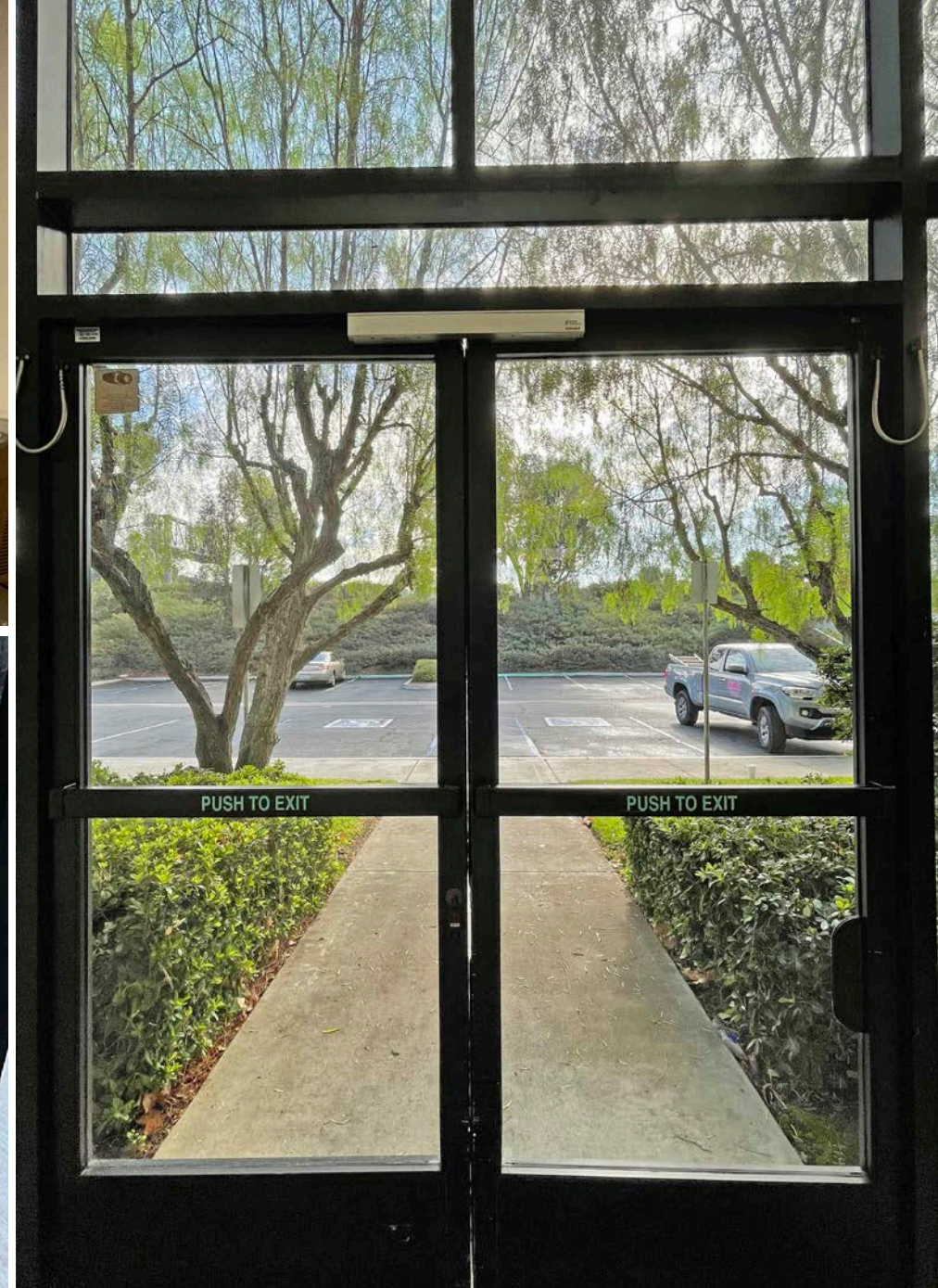
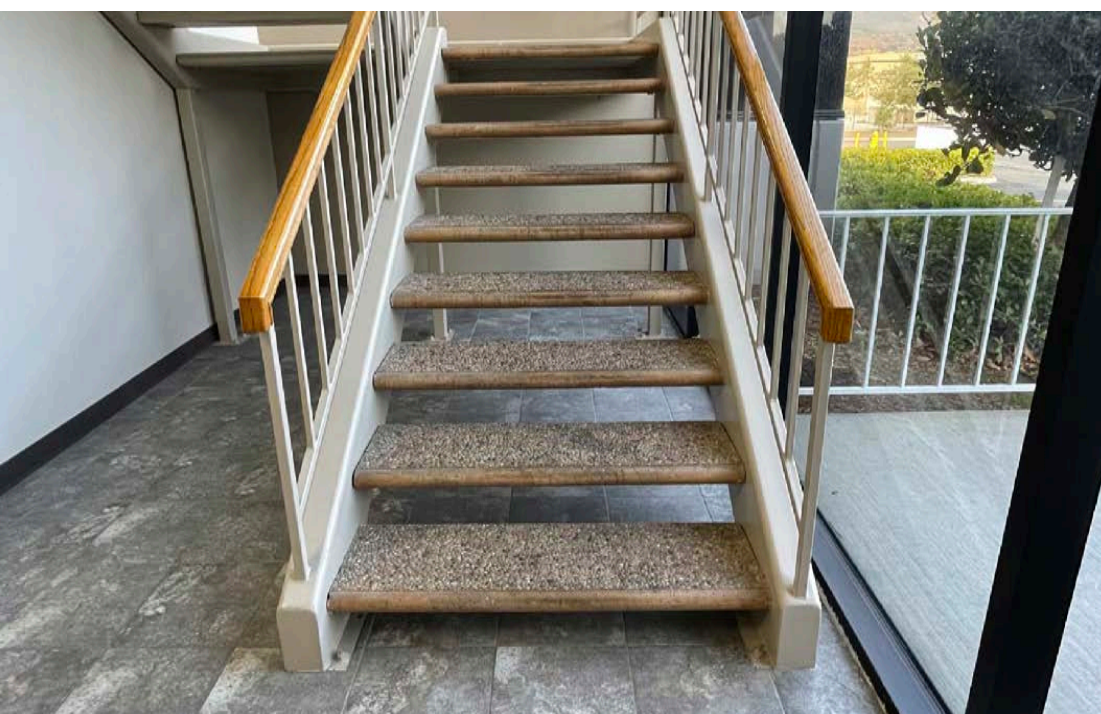
**28936 OLD TOWN FRONT ST**  
TEMECULA, CA 92590

**LA** LEE &  
ASSOCIATES  
COMMERCIAL REAL ESTATE SERVICES

# PROPERTY HIGHLIGHTS

- Suite 201 - 711 SF
- Suite 205 - 1,155 SF, Immediately Available
- Located on Old Town Front St.
- Great visibility and access off of the 15 FWY
- Within close walking proximity to restaurants and other local amenities
- Ample amounts of parking.





**MATT SHAW, CCIM**  
Vice President  
951.445.4502  
mshaw@leetemecula.com  
DRE# 01917622

**BLAKE VALDEZ**  
Vice President  
951.445.4509  
bvaldez@leetemecula.com  
DRE# 02107941

No warranty or representation has been made to the accuracy of the foregoing information. Terms of sale or lease and availability are subject to change or withdrawal without notice. Lee & Associates Commercial Real Estate Services, Inc. - Riverside. 25240 Hancock Avenue, Suite 100 - Murrieta, CA 92562 | Corporate ID# 01048055

# 2ND FLOOR

## SUITE 201

711 SF

Reception area and  
1 private Office

**LEASE RATE:**

**\$1.45 PSF + \$0.20 CAM**

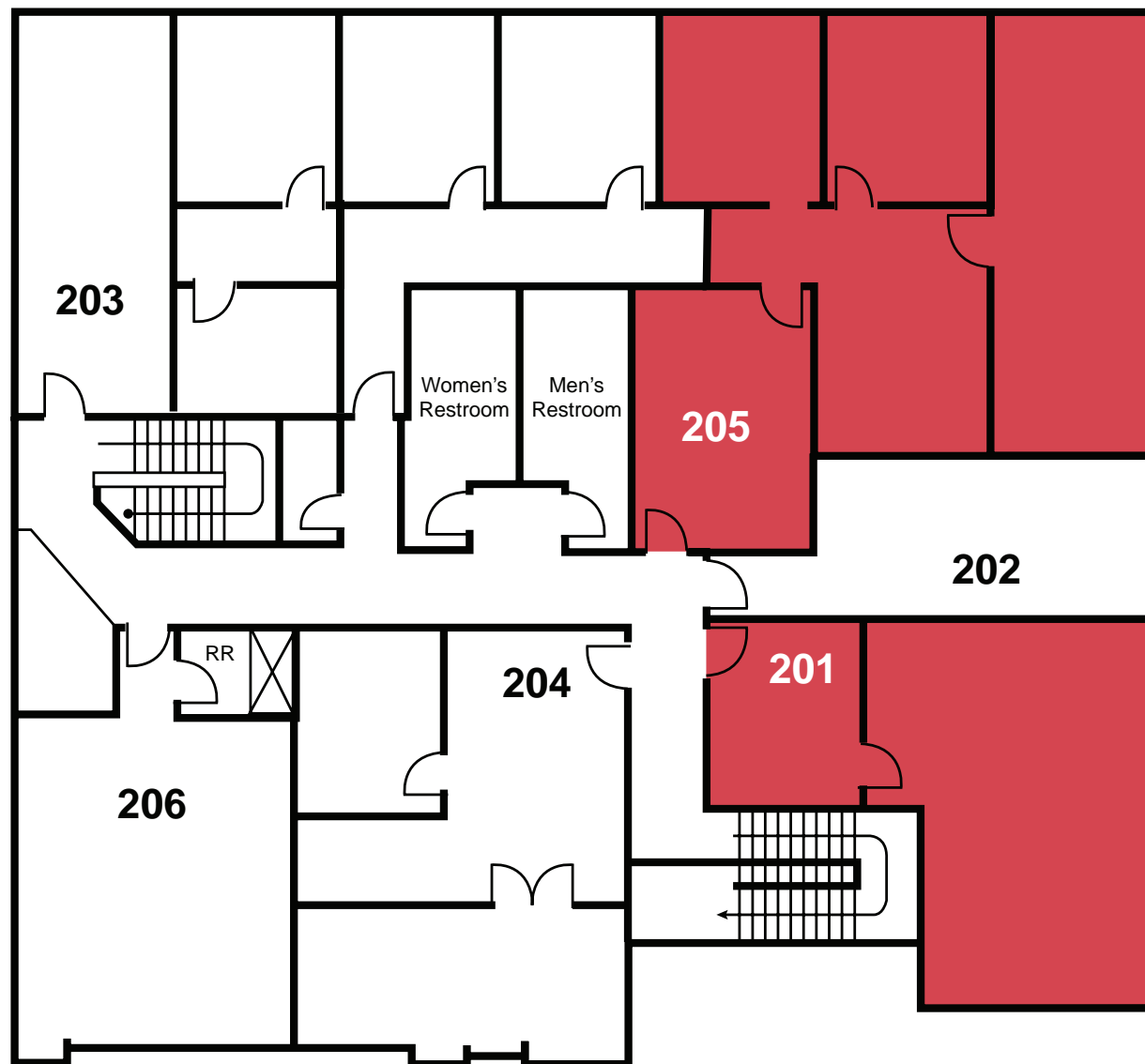
## SUITE 205

1,155 SF

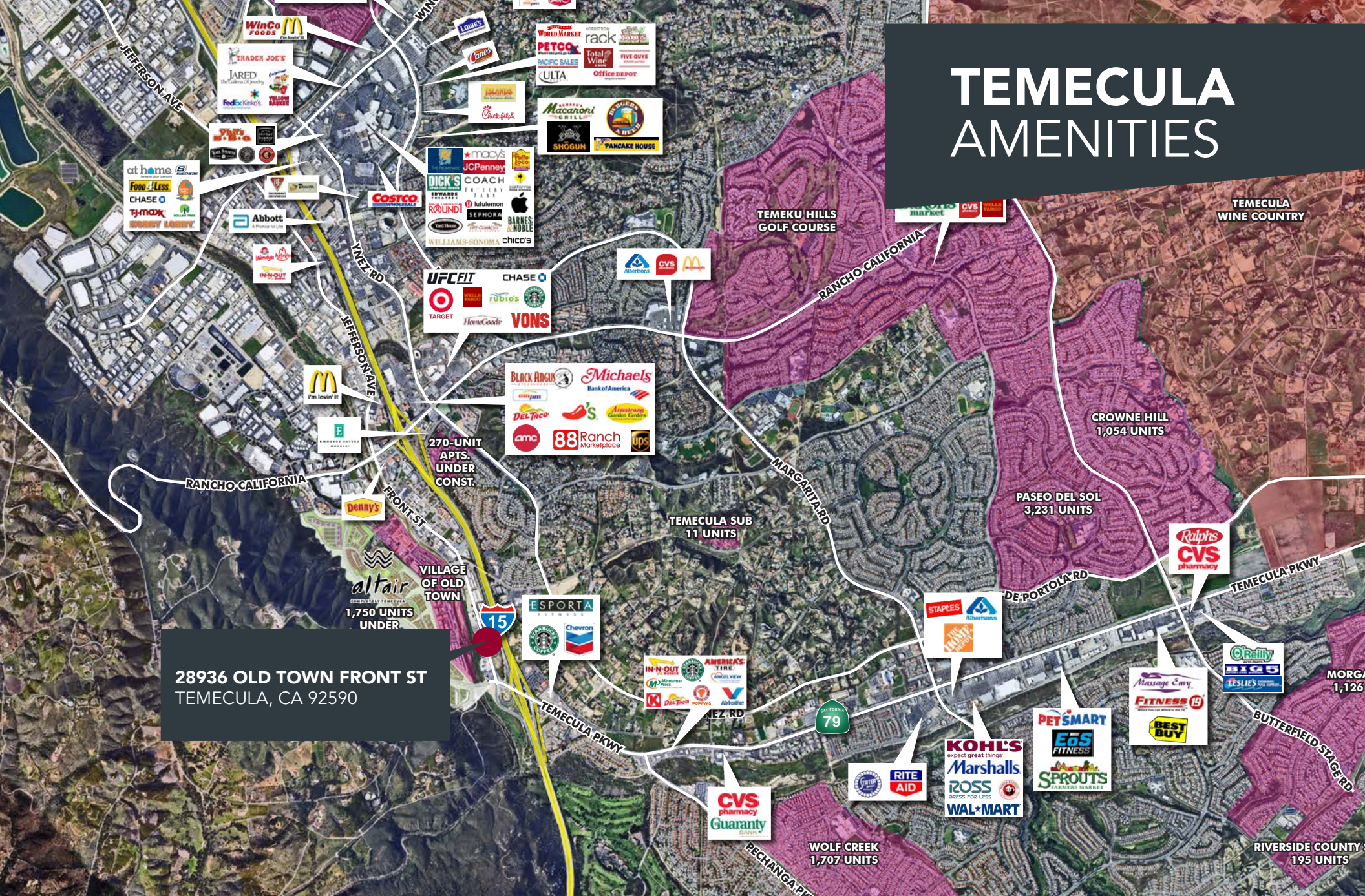
Immediately Available  
Reception, Open Work Area,  
2 Private Offices, Large  
Conference Room

**LEASE RATE:**

**\$1.45 PSF + \$0.20 CAM**



# TEMECULA AMENITIES



**MATT SHAW, CCIM**  
Vice President  
951.445.4502  
mshaw@leetemecula.com  
DRE# 01917622

**BLAKE VALDEZ**  
Vice President  
951.445.4509  
bvaldez@leetemecula.com  
DRE# 02107941

No warranty or representation has been made to the accuracy of the foregoing information. Terms of sale or lease and availability are subject to change or withdrawal without notice. Lee & Associates Commercial Real Estate Services, Inc. - Riverside. 25240 Hancock Avenue, Suite 100 - Murrieta, CA 92562 | Corporate ID# 01048055