

# FOR SUBLEASE

## 2570 N 1<sup>st</sup> St, Suite 380

San Jose, CA 95131

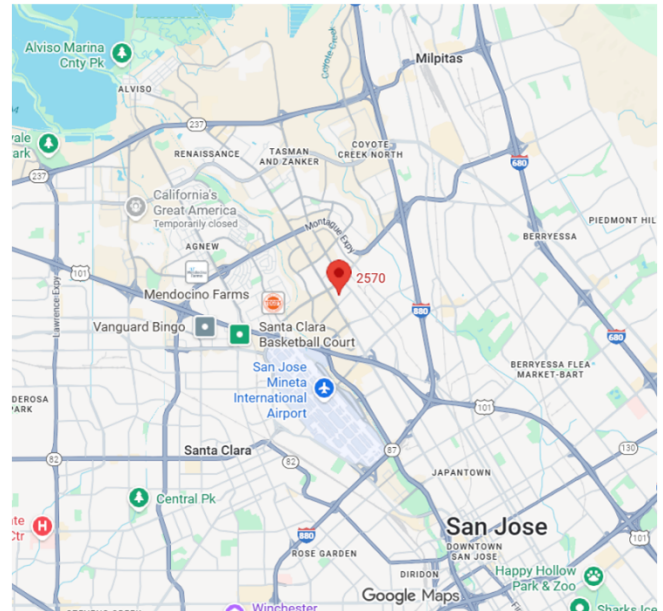


LED 08/31/2026 **Short-Term Office Sublease**

**±2,460 SF Available**

### Property Highlights

- Fully Furnished Plug & Play Office Space
- On-site Kinetic Fitness Center & Locker Rooms
- Conference Center offers 1,706 SF of meeting & training space
- On-site dining, flower shop, and cafe
- Light Rail directly across the street / Less than 1 mile to SJC Airport
- Direct Access to Hwy-101 & 880
- Furnished with 17 Workstations
- Parking: 3.33 / 1,000



5201 Great America Pkwy, Suite 455  
Santa Clara, California 95054  
Main +1 408 656 7683 | Fax +1 408 350 8369  
[www.s5cre.com](http://www.s5cre.com)

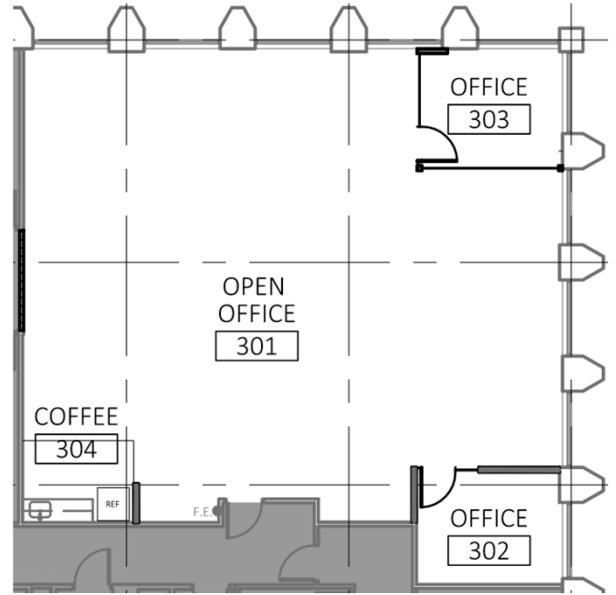
Nathan Rodriguez  
+1 559 707 3265  
nathan@s5cre.com  
Lic #02166704

Christian Sergent  
+1 831 229 9105  
christian@s5cre.com  
Lic #02163317

S5 Advisory Copyright 2022. The information contained herein was lawfully obtained from sources we consider reliable. S5 Advisory is not responsible and expressly disclaims all liability, for errors, commissions, prior sales, withdrawal from market or change in price. Seller (or Lessor, as the case may be) and broker make no representation as to the environmental condition of the property and recommend Purchaser's (or Lessee's) independent investigation.



**FOR SUBLEASE**  
**2570 N 1<sup>st</sup> St, Suite 380**  
 San Jose, CA 95131



**Floor Plan**  
 ±2,460 SF *Not to Scale*



5201 Great America Pkwy, Suite 455  
 Santa Clara, California 95054  
 Main +1 408 656 7683 | Fax +1 408 350 8369  
[www.s5cre.com](http://www.s5cre.com)

Nathan Rodriguez  
 +1 559 707 3265  
 nathan@s5cre.com  
 Lic #02166704

Christian Sergent  
 +1 831 229 9105  
 christian@s5cre.com  
 Lic #02163317

S5 Advisory Copyright 2022. The information contained herein was lawfully obtained from sources we consider reliable. S5 Advisory is not responsible and expressly disclaims all liability, for errors, commissions, prior sales, withdrawal from market or change in price. Seller (or Lessor, as the case may be) and broker make no representation as to the environmental condition of the property and recommend Purchaser's (or Lessee's) independent investigation.

**FOR SUBLEASE**  
**2570 N 1<sup>st</sup> St, Suite 380**  
San Jose, CA 95131



**Project Amenities**

- Conference Center
- Bike Racks
- EV Charging Stations
- Flower Floor
- Game Room
- Kinetic Fitness Center
- Outdoor Workspace
- Wi-Fi Enabled Workplace



5201 Great America Pkwy, Suite 455  
Santa Clara, California 95054  
Main +1 408 656 7683 | Fax +1 408 350 8369  
[www.s5cre.com](http://www.s5cre.com)

Nathan Rodriguez  
+1 559 707 3265  
nathan@s5cre.com  
Lic #02166704

Christian Sergent  
+1 831 229 9105  
christian@s5cre.com  
Lic #02163317

S5 Advisory Copyright 2022. The information contained herein was lawfully obtained from sources we consider reliable. S5 Advisory is not responsible and expressly disclaims all liability, for errors, commissions, prior sales, withdrawal from market or change in price. Seller (or Lessor, as the case may be) and broker make no representation as to the environmental condition of the property and recommend Purchaser's (or Lessee's) independent investigation.