

For Sublease

3131 Camino Del Rio North

Property specifications:

- SF: 4,605-19,079 sf
- Multiple demising options:
 - Suite 1450: 4,605sf
 - Suite 1400: ~7,000-14,474
- **Rate:** \$1.99 - \$2.49/SF/FSG
- Sublease Expiration:
December 31, 2028
- FF&E: Negotiable
- Space notes:
 - Beautiful and modern professional office with creative finishes.
 - Exposed ceiling in reception and common areas
 - Large break room



For more information, contact:

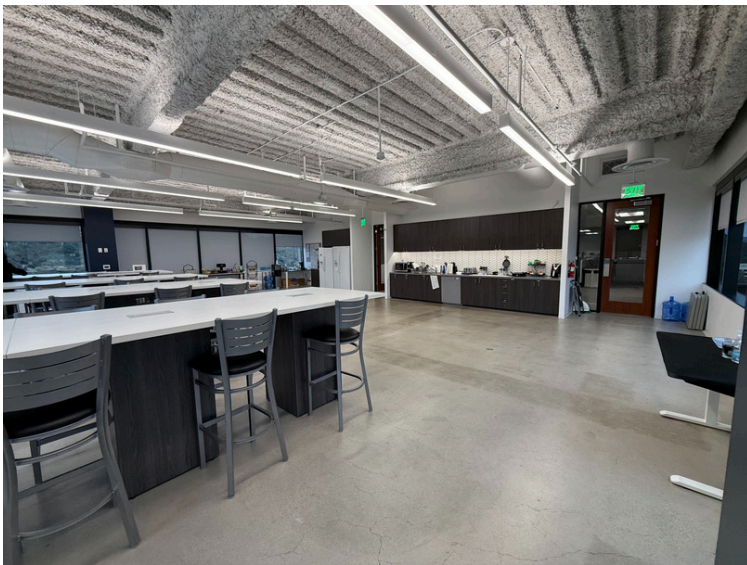
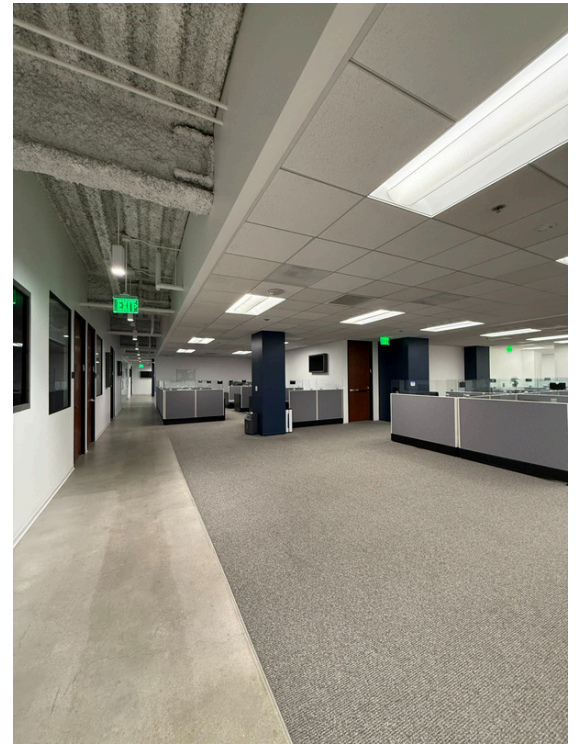
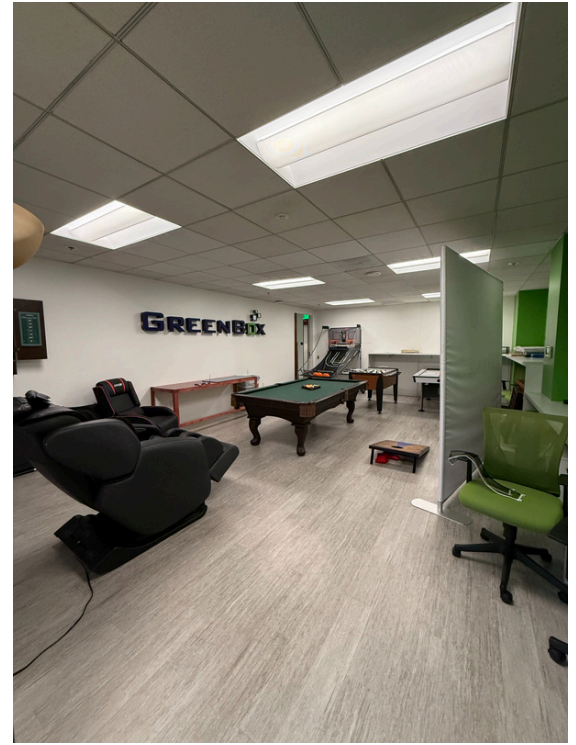
Scott Schindler

Scott.Schindler@jll.com

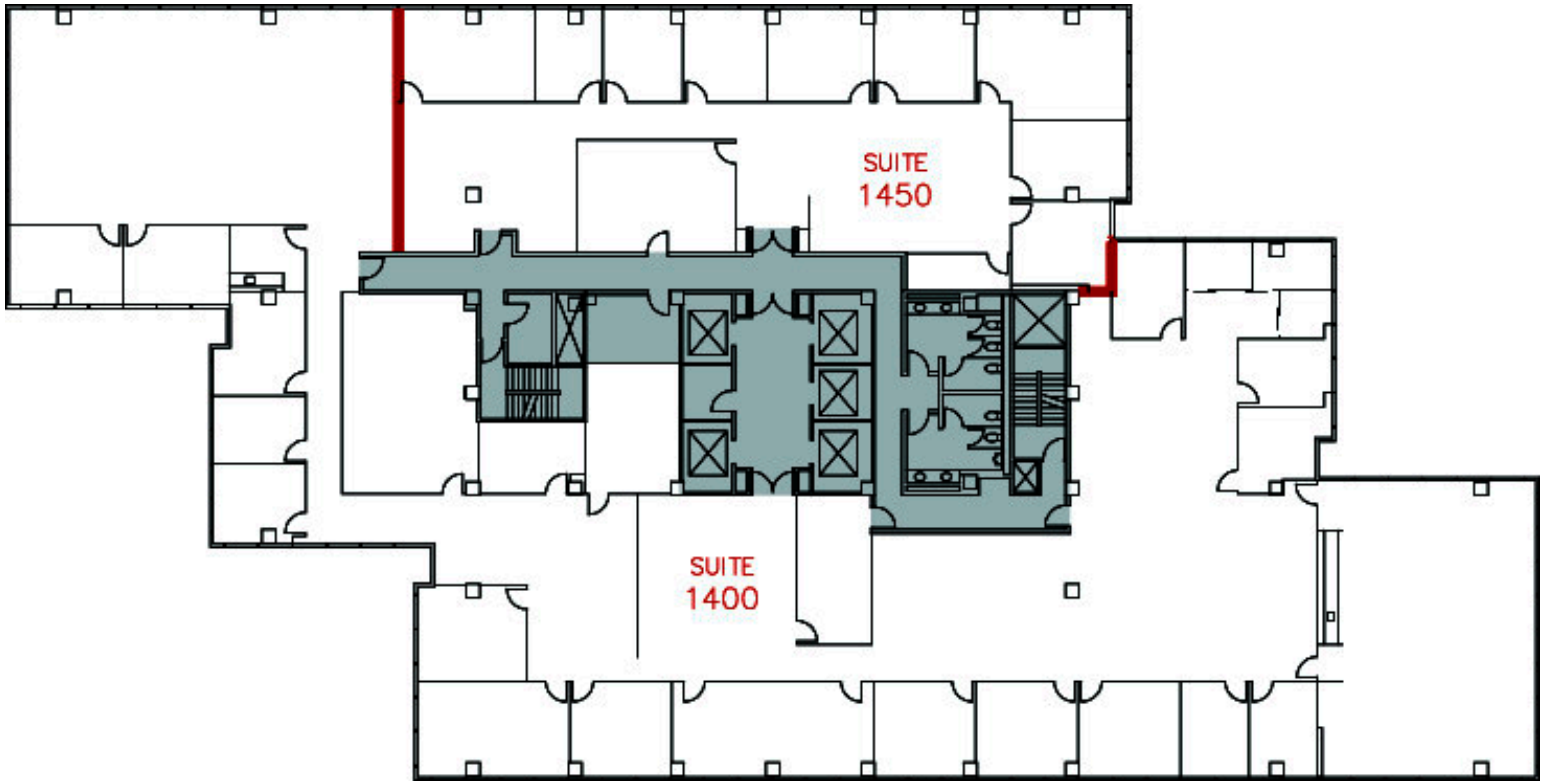
T (858) 410-6382

C (619) 742-3352

RE lic. #01982561



Although information has been obtained from sources deemed reliable, neither Owner nor JLL makes any guarantees, warranties or representations, express or implied, as to the completeness or accuracy as to the information contained herein. Any projections, opinions, assumptions or estimates used are for example only. There may be differences between projected and actual results, and those differences may be material. The Property may be withdrawn without notice. Neither Owner nor JLL accepts any liability for any loss or damage suffered by any party resulting from reliance on this information. If the recipient of this information has signed a confidentiality agreement regarding this matter, this information is subject to the terms of that agreement. ©2025. Jones Lang LaSalle IP, Inc. All rights reserved. Jones Lang LaSalle Brokerage, Inc. RE lic. #01856260



Although information has been obtained from sources deemed reliable, neither Owner nor JLL makes any guarantees, warranties or representations, express or implied, as to the completeness or accuracy as to the information contained herein. Any projections, opinions, assumptions or estimates used are for example only. There may be differences between projected and actual results, and those differences may be material. The Property may be withdrawn without notice. Neither Owner nor JLL accepts any liability for any loss or damage suffered by any party resulting from reliance on this information. If the recipient of this information has signed a confidentiality agreement regarding this matter, this information is subject to the terms of that agreement. ©2025. Jones Lang LaSalle IP, Inc. All rights reserved. Jones Lang LaSalle Brokerage, Inc. RE lic. #01856260