

1017 N. La Cienega Blvd

West Hollywood, CA 90069

**MOVE IN READY OFFICES FOR LEASE
(FULL FLOOR OPPORTUNITY)**

1017

8'-0" VEHICLE CLEARANCE BEYOND



**COMMERCIAL
ASSET GROUP**

Adam Funk

Managing Director

310.666.0124

afunk@cagre.com

Lic. 02129715

PROPERTY HIGHLIGHTS

SPACE SIZE

SUITE 200: ±2,627 RSF

SUITE 300*: ±2,644 RSF

SUITE 320*: ±2,555 RSF

(*CAN BE COMBINED FOR ±5,119 RSF)

RENTAL RATE

NEGOTIABLE

NET OF ELECTRIC

TERM

NEGOTIABLE

AVAILABILITY

IMMEDIATELY

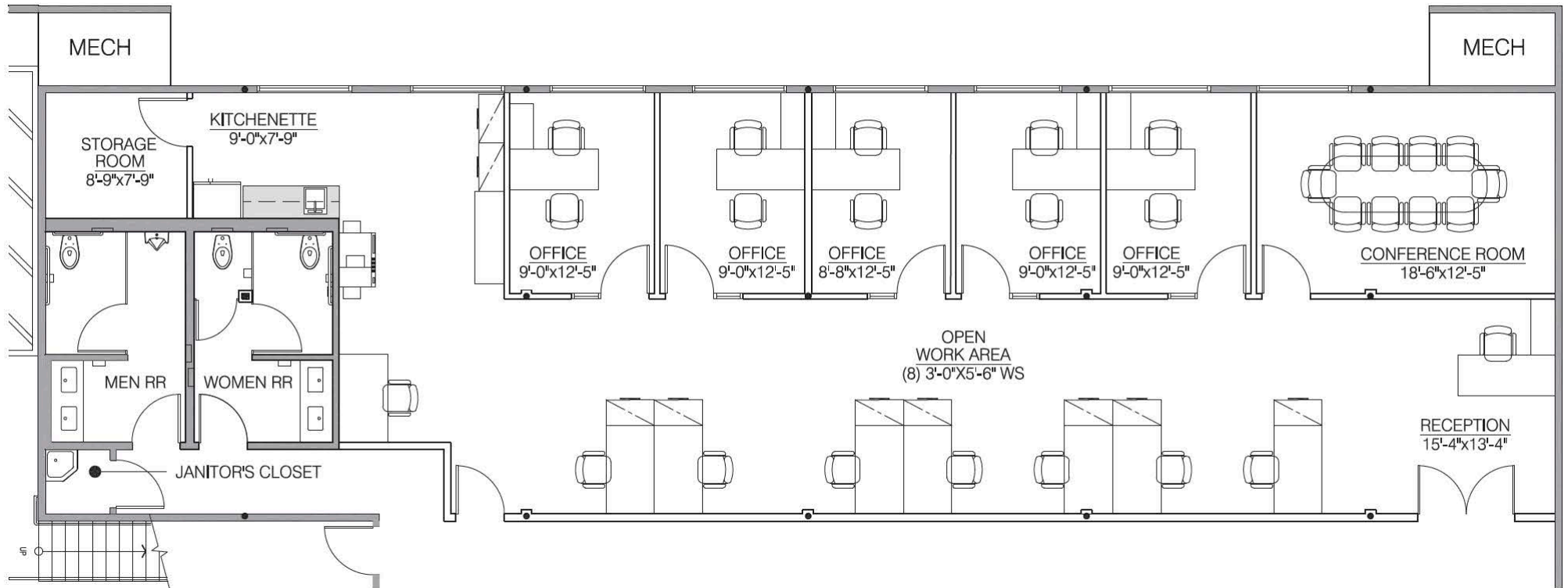
PARKING

2.5/1,000 SF

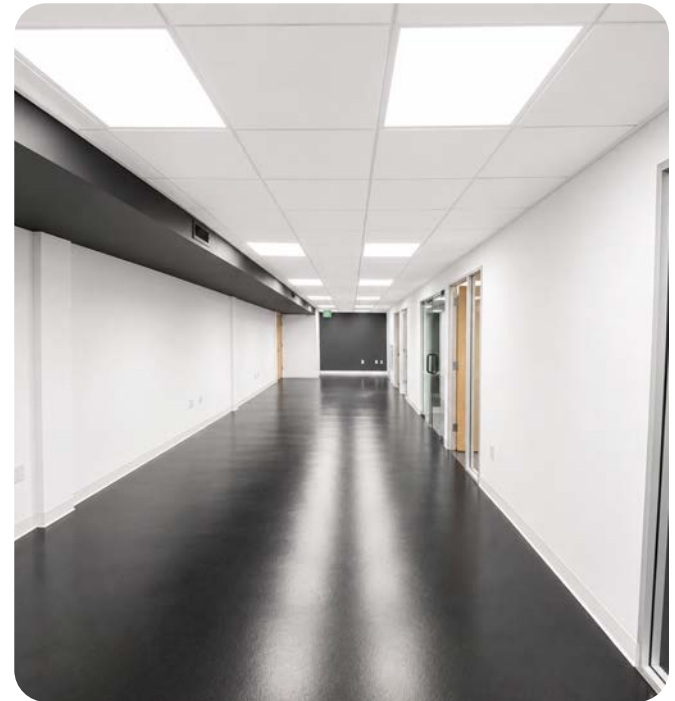
\$125/SPACE/MO

- Move-in ready ±2,627 RSF space available
- Full floor - remodeled building exterior/interior and building systems, operable windows throughout
- Highly visible location at La Cienega Blvd and Santa Monica Blvd
- Prime WeHo location, walking distance to endless restaurants and retail amenities
- Long term ownership, well-managed property
- Onsite parking facilities include gated on-grade garage and a surface lot adjacent to the building

SUITE 200 FLOOR PLAN: ±2,627 RSF

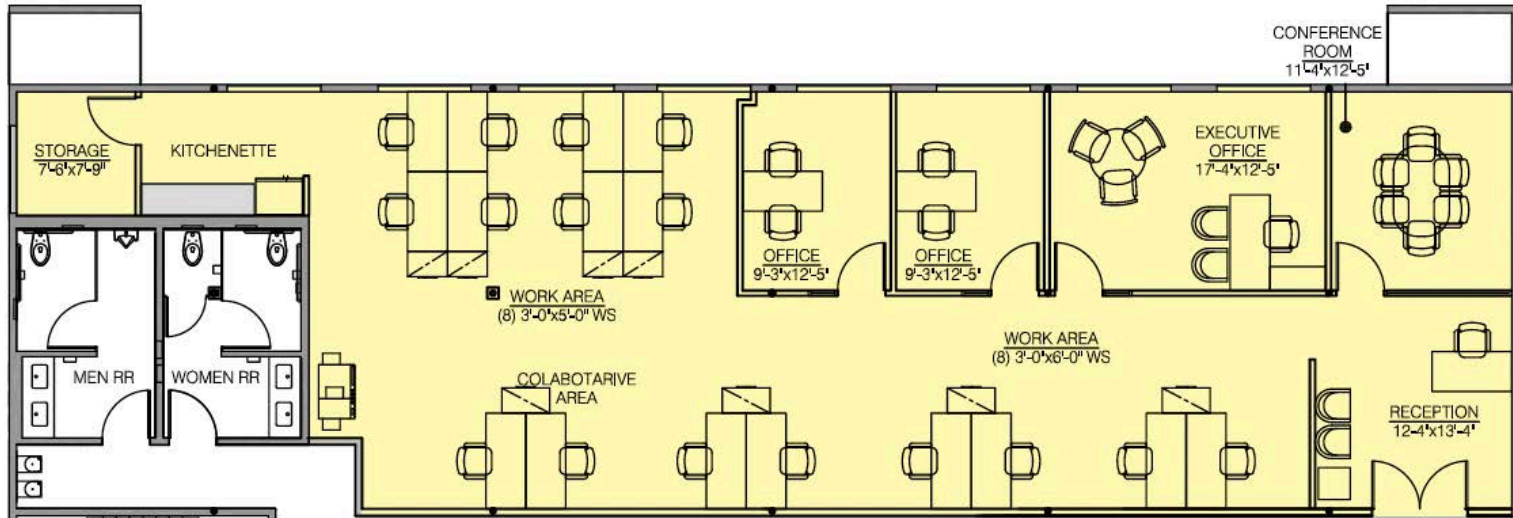


SUITE 200 PHOTOS

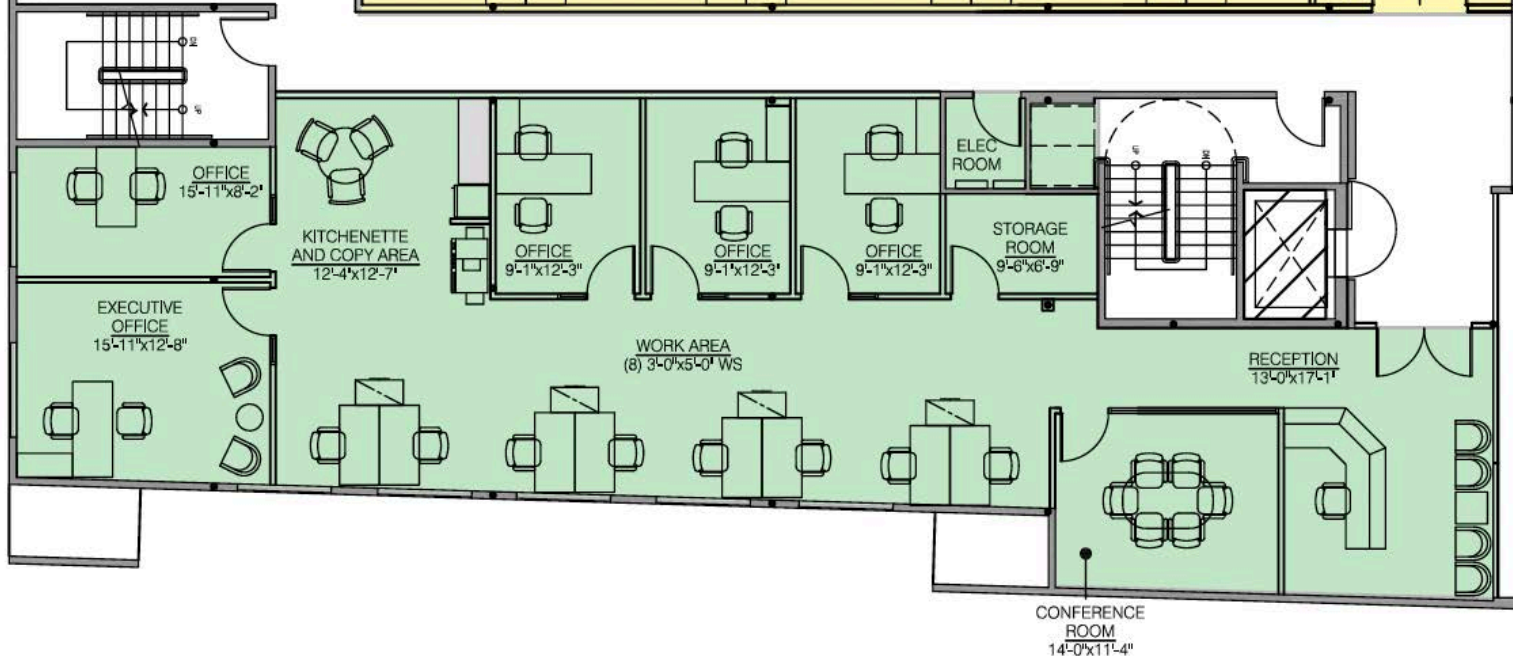


SUITE 300/320 (FULL FLOOR): ±5,199 RSF

SUITE 300:
±2,644 RSF



SUITE 320:
±2,555 RSF



SUITE 300/320 PHOTOS



AERIAL



Adam Funk
Managing Director
310.666.0124
afunk@cagre.com
Lic. 02129715



**COMMERCIAL
ASSET GROUP**

Commercial Asset Group
190 N. Canon Drive, STE 300
Beverly Hills, CA 90210
P: 310.275.8222 F: 310.275.8223
www.cagre.com Lic. 01876070



These materials are based on information and content provided by others, which we believe are accurate. No guarantee, warranty or representation is made by Commercial Asset Group, Inc. or its personnel. All interested parties must independently verify accuracy and completeness. As well, any projections, assumptions, opinion, or estimates are used for example only and do not represent the current or future performance of the identified property. Your tax, financial, legal and toxic substance advisors should conduct a careful investigation of the property and its suitability for your needs, including land use limitations. The property is subject to prior lease, sale, change in price, or withdrawal from the market without notice.