

# FOR SALE

# RETAIL/MEDICAL OFFICE SPACE



11543-11545 OLYMPIC BLVD. / 2146 S. COLBY AVE. | LOS ANGELES, CALIFORNIA

## OFFERING SUMMARY

Sale Price:	\$6,500,000
Building Size:	7,685 SF
Lot Size:	13,503 SF

## PROPERTY HIGHLIGHTS

- Within close proximity to the 10 & 405 Freeways
- 19 private parking spaces on-site
- Signalized corner
- High traffic count
- Fantastic Synergy
- Great layout

### EXCLUSIVELY LISTED BY:

#### Sam Kangavari

Senior Vice President  
310.801.0631 Direct  
skangavari@naicapital.com  
CA DRE #01846336

#### Joshua Shadpour

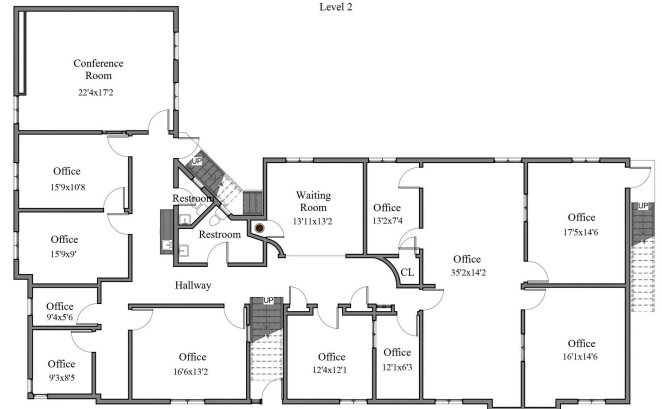
310.228.7300 Direct  
josh@shadpour.com  
CA DRE #01467689

# NAI Capital

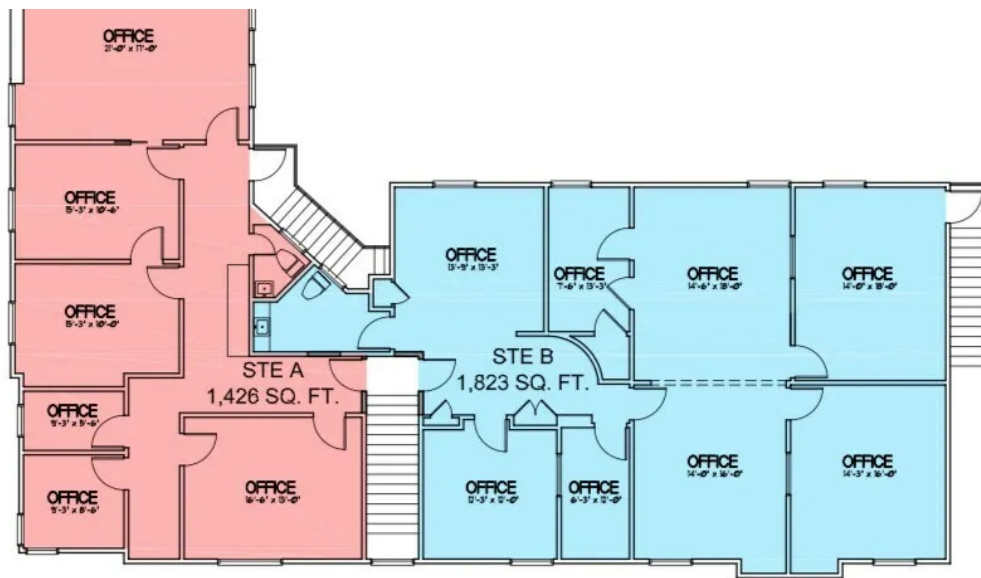
COMMERCIAL REAL ESTATE SERVICES, WORLDWIDE

[www.naicapital.com](http://www.naicapital.com)

11543 West Olympic Blvd | Los Angeles, CA 90064



All measurements are approximate and not guaranteed. This illustration is provided for marketing and convenience only. All information should be verified independently. Room count.



	P.O. Box 800315	DRAWING TITLE <b>11545 OLYMPIC BLVD</b> LOS ANGELES, CA	DATE 2023FEB11
		PROJECT NUMBER	

©NAI Capital Commercial, Inc. Content in this document may include AI generated or altered text, images and/or analysis. No warranty, express or implied, is made as to the accuracy of the information contained herein. This information is submitted subject to errors, omissions, change of price, rental or other conditions, withdrawal without notice, and is subject to any special listing conditions imposed by our principals. Cooperating brokers, buyers, tenants and other parties who receive this document should not rely on it, but should use it as a starting point of analysis, and should independently confirm the accuracy of the information contained herein through a due diligence review of the books, records, files and documents that constitute reliable sources of the information described herein. Unedited images viewable at [naicapital.com](http://naicapital.com) | Cal DRE Lic #02130474

**Sam Kangavari**

Senior Vice President  
310.801.0631 Direct

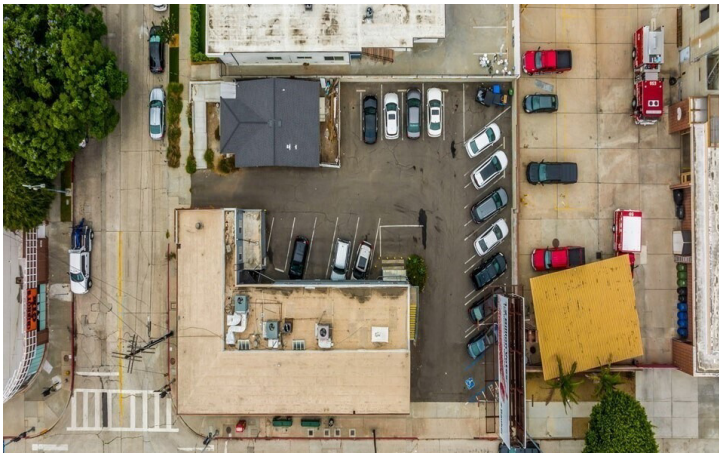
[skangavari@naicapital.com](mailto:skangavari@naicapital.com)

**Joshua Shadpour**

310.228.7300 Direct

[josh@shadpour.com](mailto:josh@shadpour.com)

NAI Capital | 1150 Santa Monica Blvd. | Suite 1550 | Los Angeles, CA 90025



©NAI Capital Commercial, Inc. Content in this document may include AI generated or altered text, images and/or analysis. No warranty, express or implied, is made as to the accuracy of the information contained herein. This information is submitted subject to errors, omissions, change of price, rental or other conditions, withdrawal without notice, and is subject to any special listing conditions imposed by our principals. Cooperating brokers, buyers, tenants and other parties who receive this document should not rely on it, but should use it as a starting point of analysis, and should independently confirm the accuracy of the information contained herein through a due diligence review of the books, records, files and documents that constitute reliable sources of the information described herein. Unedited images viewable at naicapital.com | Cal DRE Lic #02130474

**Sam Kangavari**

Senior Vice President  
 310.801.0631 Direct

skangavari@naicapital.com

**Joshua Shadpour**

310.228.7300 Direct

josh@shadpour.com

NAI Capital | 1150 Santa Monica Blvd. | Suite 1550 | Los Angeles, CA 90025