



28-30 Hythe Road

London, NW10 6RR

Prime Open Storage Yard

5,425 sq ft
(504 sq m)

- Flexible terms available at competitive rents
- Close proximity to A40/A406
- Palisade fencing compound
- Away from residential area

28-30 Hythe Road, London, NW10 6RR

Summary

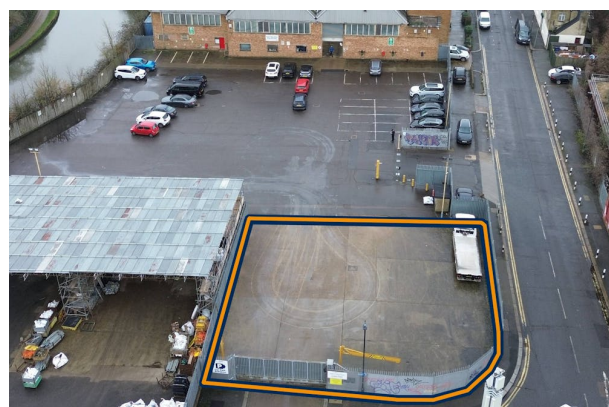
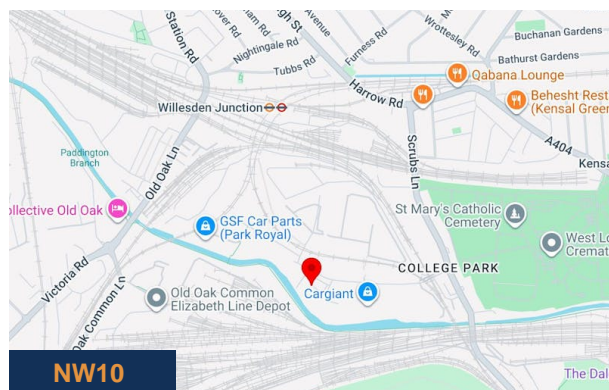
Available Size	5,425 sq ft
Rent	£54,252 per annum
Business Rates	Upon Enquiry
VAT	Applicable
Legal Fees	Each party to bear their own costs
EPC Rating	EPC exempt - No building present

Description

Secure open Yard available to let in Hythe Road, ideal for a variety of different uses. Flexible terms available at competitive rates.

Location

Situated within Apex Industrial Estate in Park Royal and is accessed via the A40 with excellent links to major motorways and Willesden Junction and White City Train Stations being close by offering good public transport links into Central London and beyond.



Viewing & Further Information



Tom O'Malley

020 8429 9005 | 07522 700 508

tom@davidcharles.co.uk

The above information contained within this email is sent subject to contract. These particulars are for general information only and do not constitute any part of an offer or contract. All statements contained therein are made without responsibility on the part of the vendors or lessors and are not to be relied upon as statement or representation of fact. Intending purchasers or lessees must satisfy themselves, by inspection, or otherwise, as to the correctness of each of the statements of dimensions contained in these particulars. Generated on 17/04/2026