

# For Sublease

# 3040 Rosslyn St Los Angeles | CA



Presented By:

**Chris Rohrer**

818.624.1180

chris@pacwestonline.com

DRE#02018754

**Ron Rohrer**

818.309.0628

ron@pacwestonline.com

DRE#01918399

**Scott Cox**

818.244.3000

scott@pacwestonline.com

DRE#01070703

**Randy Rohrer**

818.244.3000

randy@pacwestonline.com

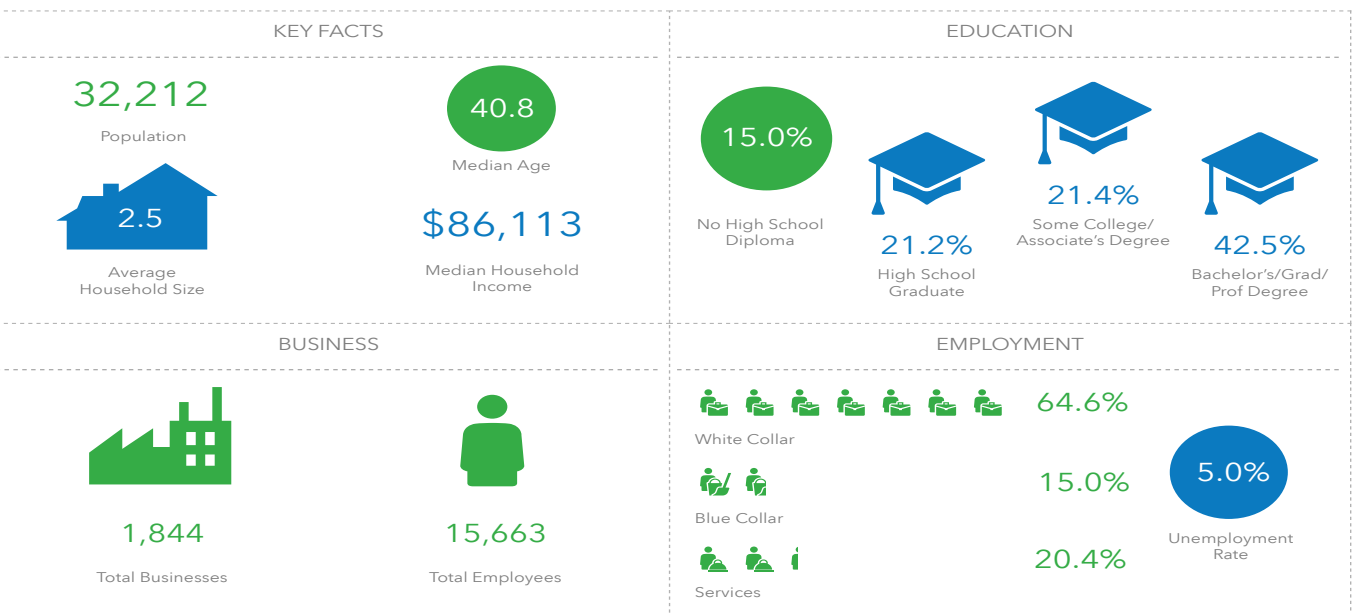
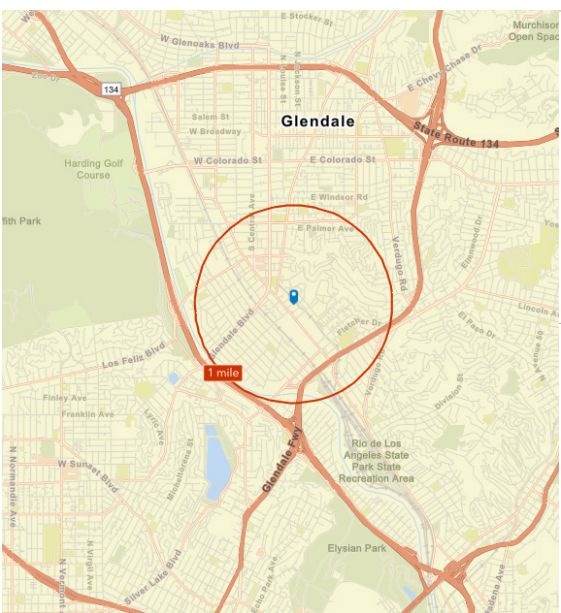
DRE#00672287



# Property Information

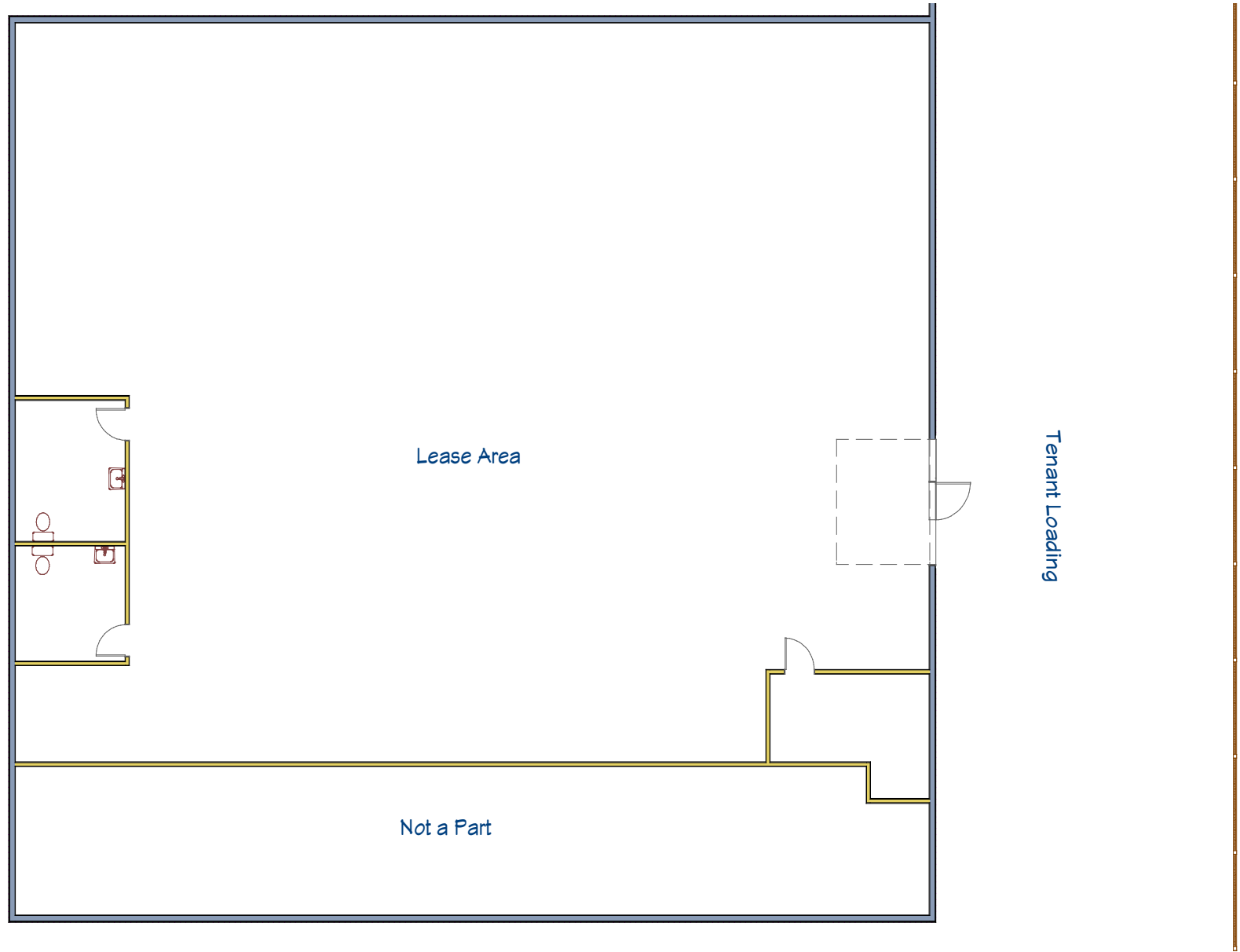
Available SF: ± 4,800 SF  
 Asking Price: \$8,160 (\$1.70/sf)  
 Land SF: POL  
 Zoning: M1-1  
 Parking: Three (3)  
 Year Built: 1954  
 Power: 600 A; 240 V; 3 Ph

- › Sublease through June 2027
- › Walkable to Quat LA
- › 1 GL Door: 10' x 10'
- › 12' Clearance
- › Gated Parking
- › Great Warehousing Space



The facts contained herein, while not guaranteed as to accuracy, are accurate to the best of our knowledge and belief.

# Floor Plan



Lease Area

Not a Part

Tenant Loading

Rosslyn Street

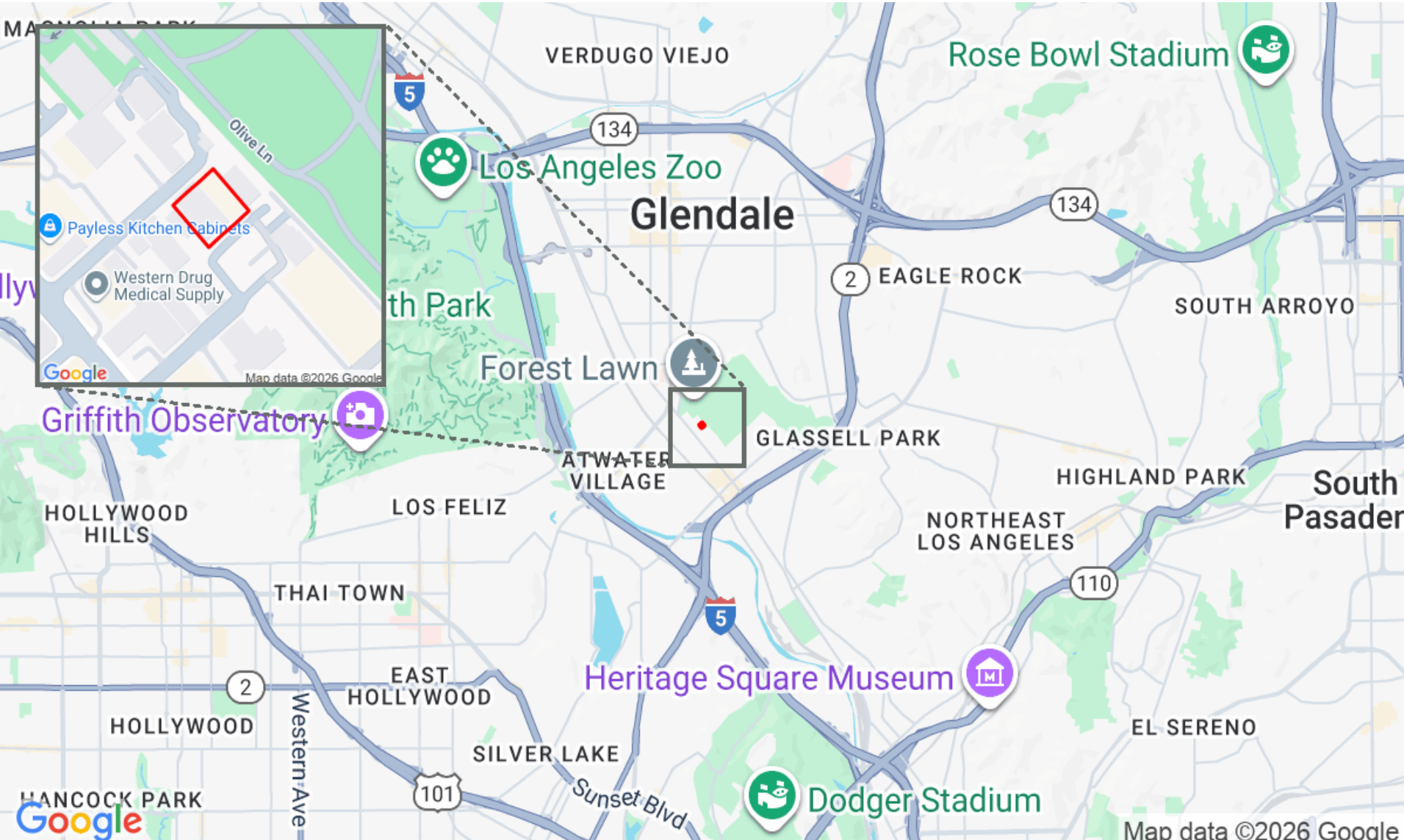
# Map Location



## 3040 Rosslyn St

Pacific West Business Properties, Inc.

6624 San Fernando Road Glendale, CA 91201 | 818-244-3000



Map data ©2026 Google

# Pictures



# Pictures



# Pictures

