



Keegan & Coppin
COMPANY, INC.

FOR LEASE

1317 SCOTT STREET
PETALUMA, CA

TURNKEY CONDO WAREHOUSE



Go beyond broker.

PRESENTED BY:

RUSS MAYER, PARTNER
LIC# 01260916 707-664-1400, EXT 353
RMAYER@KEEGANCOPPIN.COM

DEMI BASILIADES, SREA
LIC# 02080190 707-664-1400, EXT 305
DBASILIADES@KEEGANCOPPIN.COM

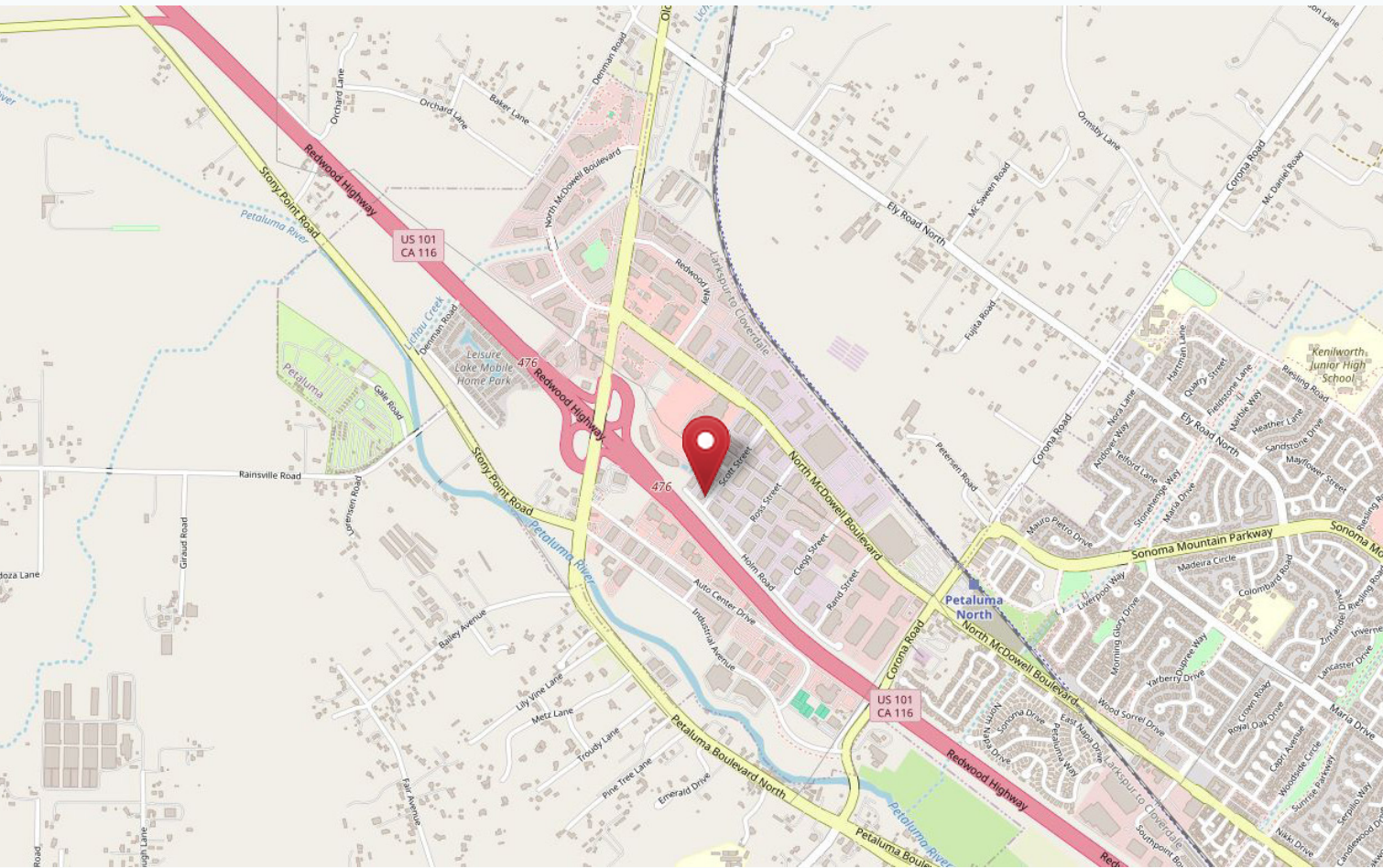


PROPERTY DESCRIPTION



1317 SCOTT STREET
PETALUMA, CA

**TURNKEY CONDO
WAREHOUSE**



PROPERTY DESCRIPTION

LEASE TERMS

3-Year Lease
\$2,485/Month Gross
Available July 1, 2026

HIGHLIGHTS

- 1,680+/- SF Warehouse with Bonus Mezzanine Storage and Office
- Kitchenette
- Bathroom
- Heated and Cooled Offices
- Heated Warehouse
- Two (2) Grade-Level Roll-up Doors
- 400 Amps Power
- Security System Available

PRESENTED BY:

RUSS MAYER
PARTNER
LIC # 01260916
RMAYER@KEEGANCOPPIN.COM

DEMI BASILIADES
SREA
LIC # 02080190
DBASILIADES@KEEGANCOPPIN.COM

Keegan & Coppin Company, Inc.
The above information, while not guaranteed, has been secured from sources we believe to be reliable. Submitted subject to error, change or withdrawal. An interested party should verify the status of the property and the information herein.



AERIAL IMAGE



1317 SCOTT STREET
PETALUMA, CA

TURNKEY CONDO
WAREHOUSE



PRESENTED BY:

RUSS MAYER
PARTNER
LIC # 01260916
RMAYER@KEEGANCOPPIN.COM

DEMI BASILIADES
SREA
LIC # 02080190
DBASILIADES@KEEGANCOPPIN.COM

Keegan & Coppin Company, Inc.
The above information, while not guaranteed, has been secured from sources we believe to be reliable. Submitted subject to error, change or withdrawal. An interested party should verify the status of the property and the information herein.

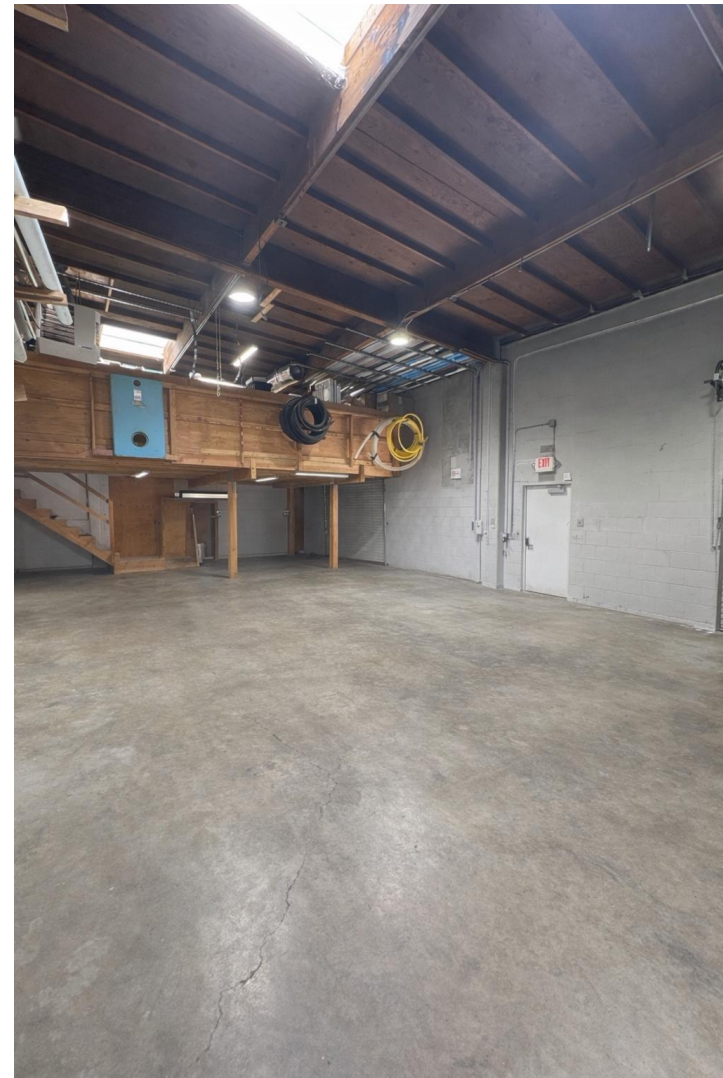


PROPERTY PHOTOS



1317 SCOTT STREET
PETALUMA, CA

TURNKEY CONDO
WAREHOUSE



PRESENTED BY:

RUSS MAYER
PARTNER
LIC # 01260916
RMAYER@KEEGANCOPPIN.COM

DEMI BASILIADES
SREA
LIC # 02080190
DBASILIADES@KEEGANCOPPIN.COM

Keegan & Coppin Company, Inc.
The above information, while not guaranteed, has been secured from sources we believe to be reliable. Submitted subject to error, change or withdrawal. An interested party should verify the status of the property and the information herein.



ABOUT US



1317 SCOTT STREET
PETALUMA, CA

TURNKEY CONDO
WAREHOUSE



Your partner in commercial real estate in the North Bay & beyond since 1976.

Keegan & Coppin has served our communities in the North Bay for well over 40 years. But our unmatched local experience is only part of what makes us the area's most trusted name in commercial real estate. At Keegan & Coppin, we bring together a range of services that go beyond traditional brokerage. That depth of knowledge and diverse skillset allows us to clarify and streamline all aspects of your transaction, giving you the confidence of knowing that we can help with anything that comes up through all phases of a project.

Keegan & Coppin Company, Inc.

The above information, while not guaranteed, has been secured from sources we believe to be reliable. Submitted subject to error, change or withdrawal. An interested party should verify the status of the property and the information herein.