

297 Kinderkamack Road, Oradell, NJ



FOR LEASE – +/-1,200SF

Prime Kinderkamack Road Location

On Site Parking

Signage

Plus Street Parking

Nina Bianco, Agent | O 201.336.1211 | M 201.615.5102 | NBianco@NIANationalRealty.com

NIA National Realty | 66 Route 17 North, Suite 900 | Paramus, NJ 07652 | 201.845.6606 | www.NIANationalRealty.com

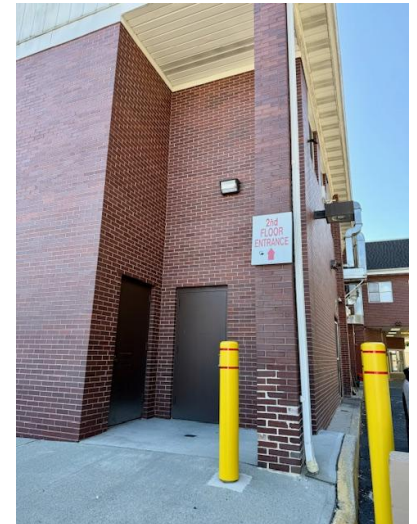
Subject to errors, omissions, changes, prior sale or withdrawal, all without notice.

297 Kinderkamack Road, Oradell, NJ

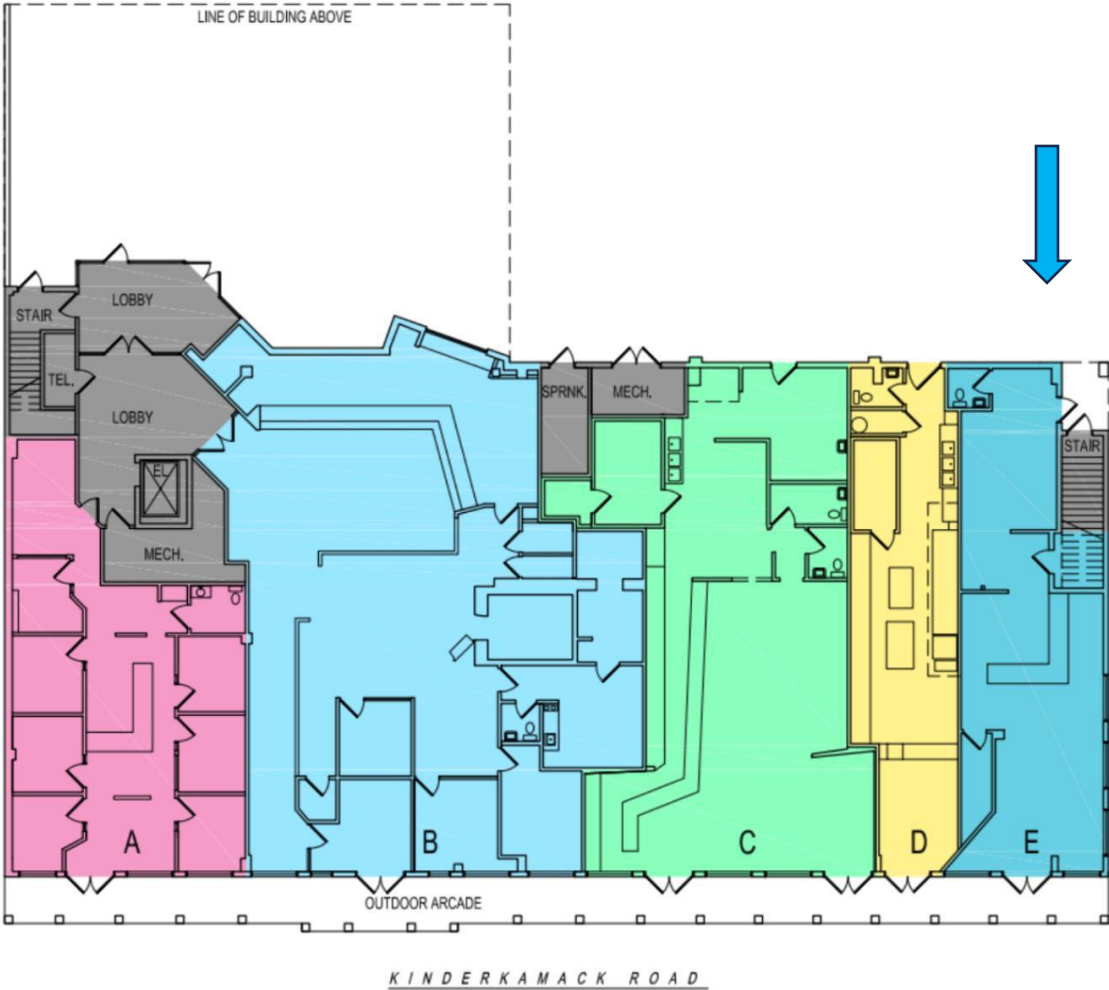


Prominent retail/office space in downtown Oradell! On-site and free customer parking available. Front and rear (parking lot entrances). Join Chinese food restaurant, a Bagel shop, ReMax and more! 2nd Floor consists of Medical & Professional Offices. Across the street from “Ora”, a vibrant new restaurant, and the Bergen County Players Theatre!

Total SF Suite 205	+/-1,200 RSF
Total SF	22,400
Heat	Gas
Parking Spaces	3.5/1,000 +Street
Zoning	Retail
Lease/SF	\$34.00
CAM (incl. Taxes)	\$15.00 PRSF



297 Kinderkamack Road, Oradell, NJ



LOCATED – Easy access on the east side of Kinderkamack Road; across from The Little Firehouse Theatre, near two crosswalks in beautiful historic Oradell, home of the famous Blauvault Art Museum and Mansion.

ADJACENT TO – Jade Dragon Chinese food, Sunrise Bagels, ReMax, Pizzerias, Salons, Restaurants, Medical Offices, Pharmacies & Banks.

2024 STATISTICS: 2 MILE RADIUS

Population = 56,971

Household Average Income = \$152,289

Daytime Business Employment = 20,047 people

TRANSIT – Walking distance to both the Oradell and Emerson Train Stations; NJ Transit bus stop. 22 – 27 miles to Newark & LaGuardia

ATTRACTIONS – Hackensack Country & Golf Club