

RAIL HEAD INDUSTRIAL PARK

1455 Rail Head Boulevard | Naples, FL 34110
Industrial For Lease



LQ Commercial
REAL ESTATE SERVICES

LQCRE.COM



\$16.00-\$19.00
PSF



\$5.13
CAM PSF



885-3,630 SF
UNITS



39,682 SF
RBA



2000
BUILT

- Unit 16 is an 885 SF warehouse with an 8' x 10' overhead door.
- Unit 4 is 2,105 SF including 1,020 SF of warehouse space and a 8' x 10' door.
- Unit 6 is 3,630 SF including 1,500 SF of warehouse space and a 8' x 10' door.
- Available for immediate occupancy.
- Three-year minimum term (no short term occupancy).
- Conveniently positioned along Old-41, connecting Bonita Beach Road in Bonita Springs to US-41 in Naples.



PROPERTIES.LQCRE.COM/RAIL-HEAD-INDUSTRIAL



TOTAL POPULATION
112,942



AVERAGE HH INCOME
\$175,190



EMPLOYEES
58,158

 **LQ Commercial**
REAL ESTATE SERVICES
3555 Kraft Rd #260
Naples, FL 34105
LQCRE.COM

Mike Concilla
Principal
D: 239.275.4922 x405
C: 239.823.9882
mconcilla@lqcre.com

Edward Larsen
Associate
D: 239.494.3659
C: 239.200.8194
elarsen@lqcre.com

Nick Matson
Associate
D: 239.275.4922 x408
C: 239.351.0137
nmatson@lqcre.com

RAIL HEAD INDUSTRIAL PARK

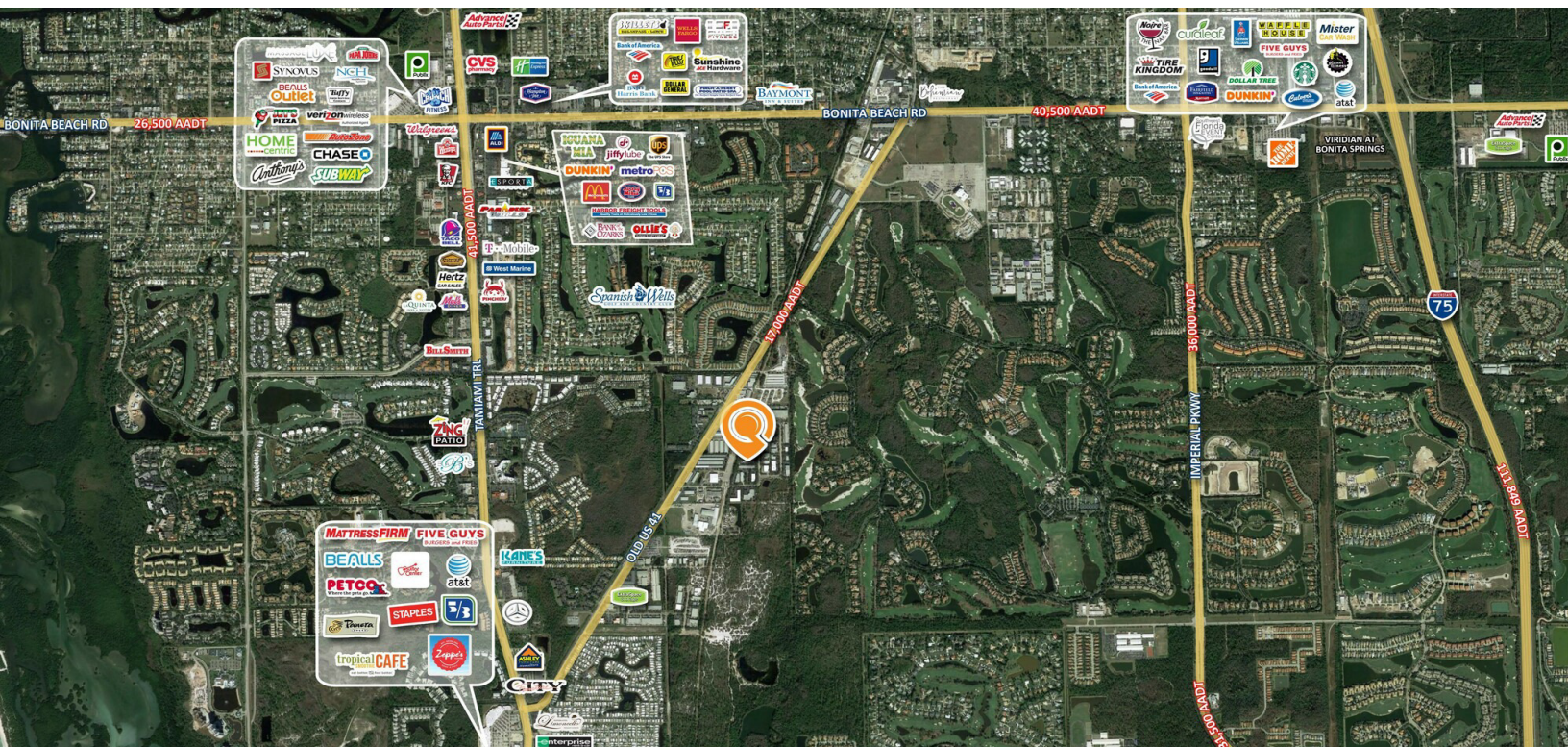
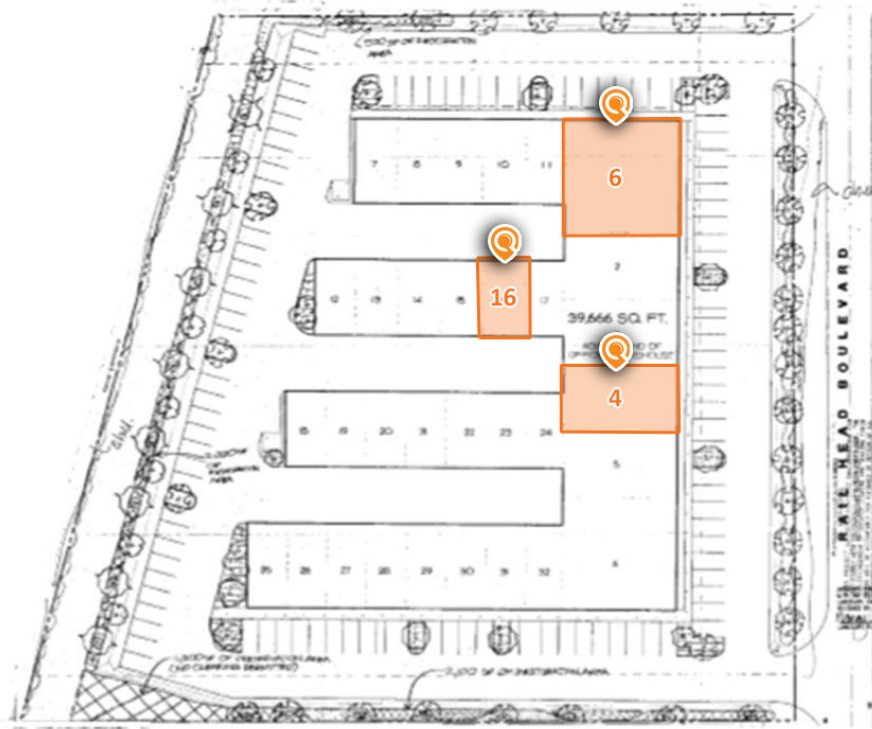
1455 Rail Head Boulevard | Naples, FL 34110

Industrial For Lease



LQ Commercial
REAL ESTATE SERVICES

LQCRE.COM



 **LQ Commercial**
REAL ESTATE SERVICES
3555 Kraft Rd #260
Naples, FL 34105
LQCRE.COM

Mike Concilla
Principal
D: 239.275.4922 x405
C: 239.823.9882
mconcilla@lqcre.com

Edward Larsen
Associate
D: 239.494.3659
C: 239.200.8194
elarsen@lqcre.com

Nick Matson
Associate
D: 239.275.4922 x408
C: 239.351.0137
nmatson@lqcre.com

RAIL HEAD INDUSTRIAL PARK

1455 Rail Head Boulevard | Naples, FL 34110

Industrial For Lease



LQ Commercial
REAL ESTATE SERVICES

LQCRE.COM



 **LQ Commercial**
REAL ESTATE SERVICES
3555 Kraft Rd #260
Naples, FL 34105
LQCRE.COM

Mike Concilla
Principal
D: 239.275.4922 x405
C: 239.823.9882
mconcilla@lqcre.com

Edward Larsen
Associate
D: 239.494.3659
C: 239.200.8194
elarsen@lqcre.com

Nick Matson
Associate
D: 239.275.4922 x408
C: 239.351.0137
nmatson@lqcre.com

Information obtained from owner(s) or other sources deemed reliable. We have no reason to doubt its accuracy, but cannot guarantee it. All properties subject to change or withdrawal without notice.