

PRICE | \$3.7M



FOR SALE + LEASE

2 & 18 LONE PINE

BLOOMFIELD HILLS, MICHIGAN





# Executive Summary

Cushman & Wakefield is pleased to present a truly rare opportunity in the heart of Bloomfield Hills – the offering of 2 & 18 Lone Pine Road. Rich in history, these landmark properties represent some of the oldest and most storied buildings in the area, meticulously maintained over the course of decades. Originally known as the Lone Pine Tea House and Inn, this site stands as a testament to the legacy of Bloomfield Hill’s early development. The one-of-a-kind property is an opportunity to own a piece of history in one of Southeast Michigan’s most prestigious communities.

## Historic Heritage

**1830**

The Pine Cottage is built at the corner of Woodward Avenue and Lone Pine Road.

**1910**

George Booth purchases the Lone Pine Cottage and in 1912 the Booth family, along with others, form a private school on the property known as the Bloomfield Hills Seminary.

**1922**

The Tea House in the dining room of the Inn becomes the first eatery in the area.

**1924**

The “lone pine” tree was relocated on property to create room for a wider Woodward Avenue.

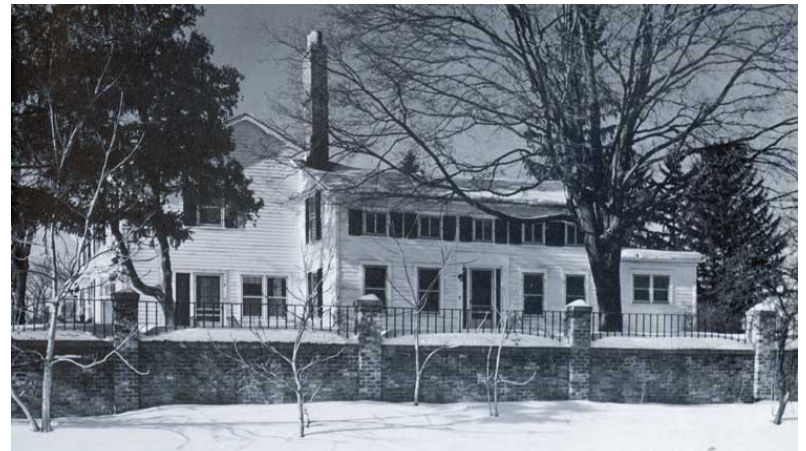
**1930**

Cranbrook Foundation becomes the owner of the property and in 1942 the former Inn is utilized as faculty dorms until 1975 when the building was sold as commercial property.

“

*Standing alone, the only tree of its kind for acres around, it had long been known as the Lone Pine. Eventually, when the nearby road running East and West needed a name, naturally, it became Lone Pine Rd.*

”







---



# 2 & 18 LONE PINE

BLOOMFIELD HILLS, MICHIGAN

**Garrett Keais**

Executive Managing Director  
248 358 6112  
garrett.keais@cushwake.com

**John VanNoord**

Senior Associate  
248 358 6106  
john.vannoord@cushwake.com

27777 Franklin Road, Suite 1050  
Southfield, MI 48034  
248 358 6100



**CUSHMAN &  
WAKEFIELD**