

AVAILABLE FOR LEASE



Unique and Flexible Retail Opportunities **at** PANORAMA TOWER



1100 BRICKELL BAY DR. MIAMI, FL 33131

P
A
N
O
R
A
M
A



Retail Opportunity at Panorama Brickell

MIAMI'S PREMIER URBAN CORE

Located at the base of the iconic **PANORAMA TOWER**, these prime spaces offer unmatched visibility, convenience, and access in one of the city's most dynamic neighborhoods. Ideally suited for high-end retailers, restaurants, showrooms, or service-based businesses.

- Suite 106 - **4,626 RSF**
 - Ground Floor
 - \$90/RSF NNN
- Suite 115 - **3,326 RSF**
 - Ground floor access / private elevator
 - \$75/RSF NNN
- Suite 108-109 - **8,501 RSF**
 - Ground floor access / private elevator
 - \$65/RSF NNN

Set within the luxurious, mixed-use **PANORAMA TOWER**, the tallest building in Florida, this space delivers the foot traffic and energy of Brickell's thriving scene.

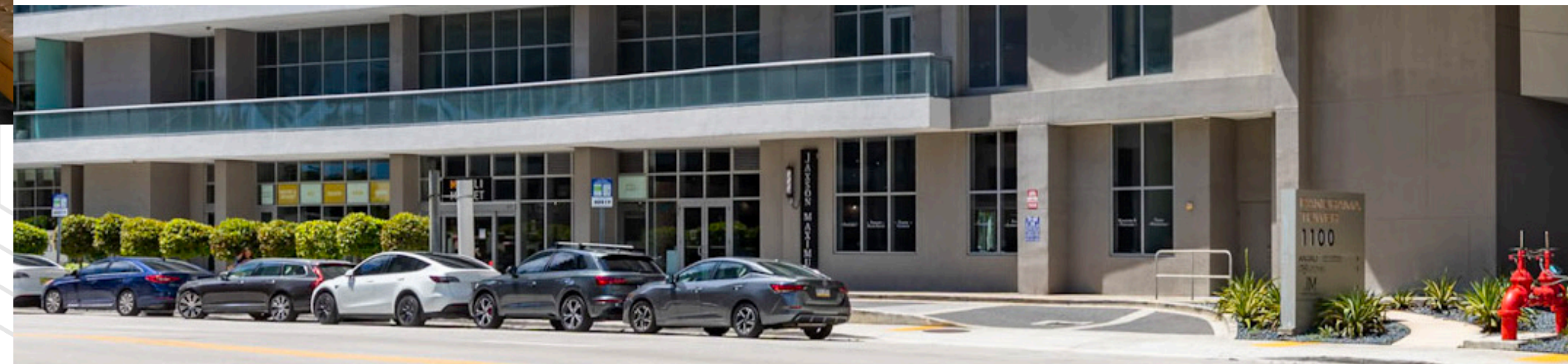
PROPERTY FEATURES

Soaring 15-foot ceiling height creates an open, airy atmosphere

Expansive windows and **exterior visibility** for natural light and branding

Eyebrow signage opportunity to maximize street level awareness

Private drive-through offers convenience and a potential valet drop-off zone





FLOORPLAN

Suite 106
4,626 RSF

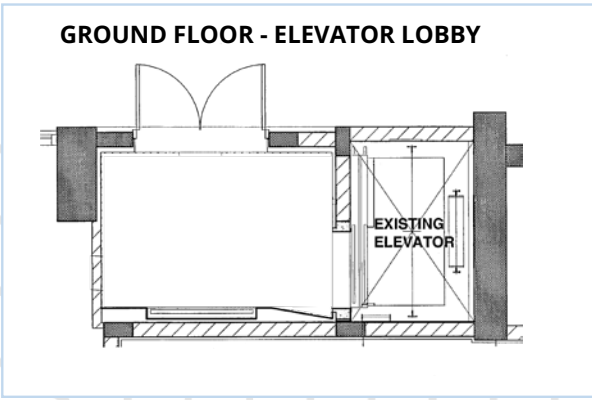
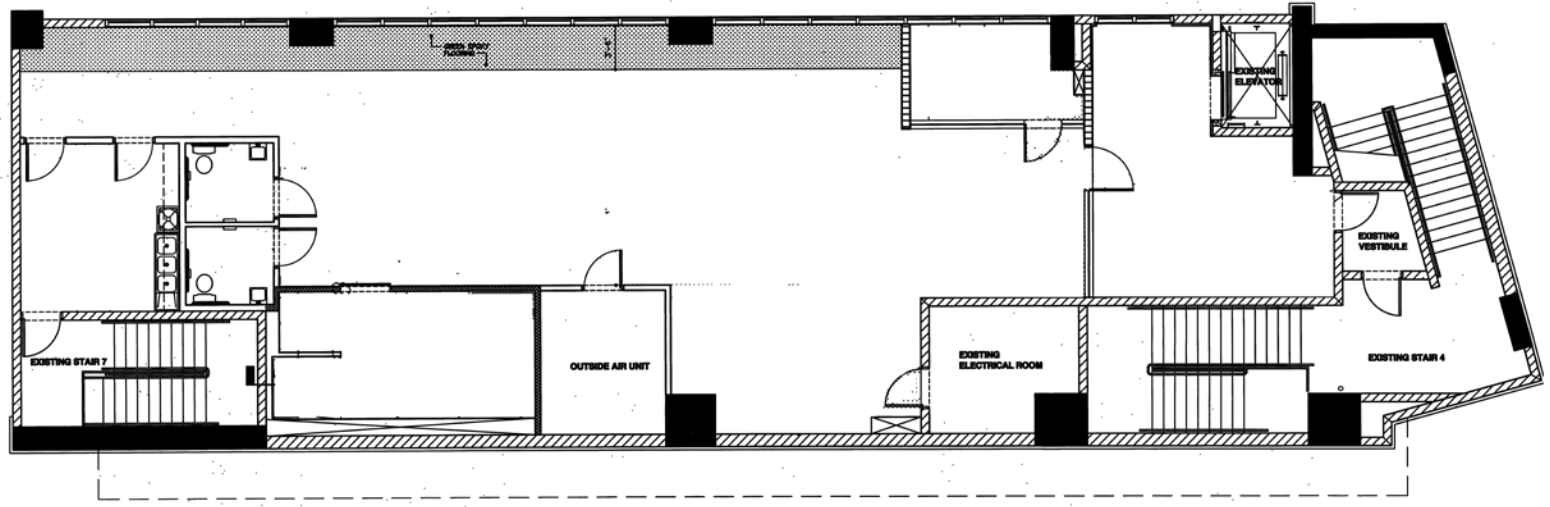


SUITE 106

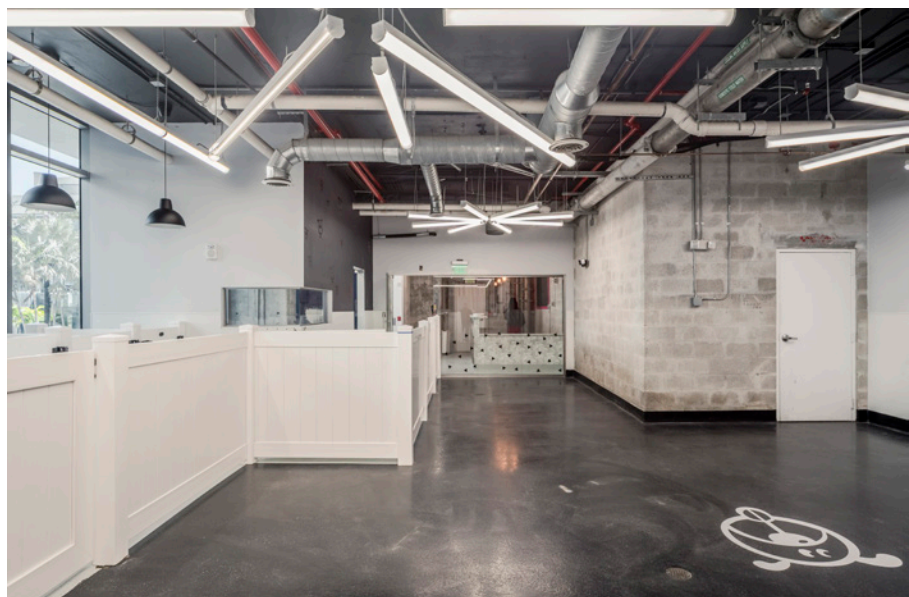


FLOORPLAN

Suite 115 | 3,326 RSF | Not Divisible



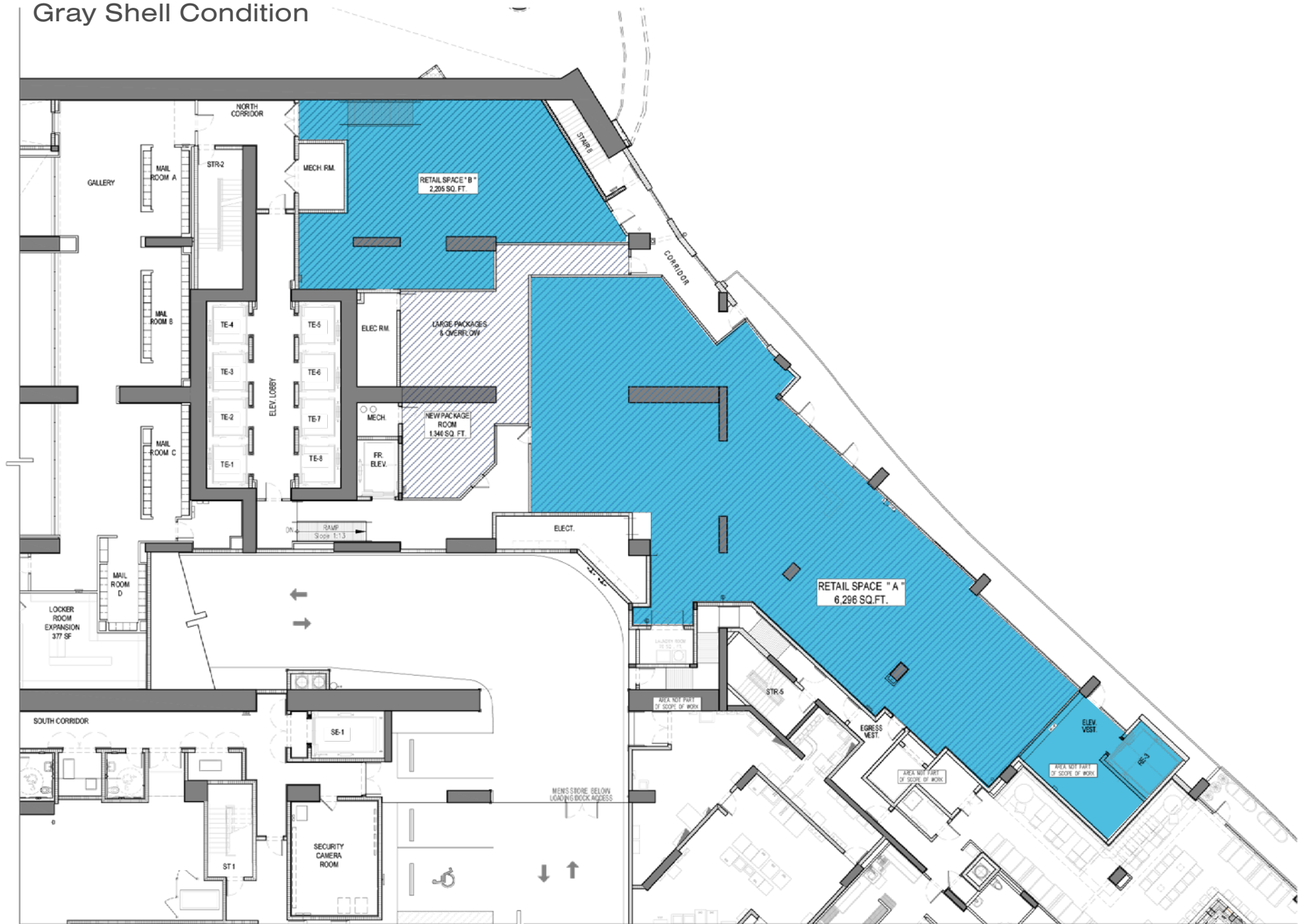
SUITE 115



FLOORPLAN

Suite 108 & 109 | 8,501 RSF

Gray Shell Condition





EXPERIENCE THE ENERGY OF PANORAMA TOWER

Tenants will benefit from direct integration with Panorama Tower's premier amenities and foot traffic.

- Onsite Hyatt Centric Hotel draws consistent hospitality footfall
- Café and banking services on premises
- Integrated with over 800 luxury residences and offices
- Heavily amenitized tower with consistent daily activity
- Strong co-tenancy and premium brand positioning

Whether you're an upscale retailer or experiential brand, this location places you at the center of it all.

PANORAMA

LOCATED IN THE THRIVING HEART OF BRICKELL

- Excellent central Brickell location with unmatched connectivity
- Surrounded by luxury condos, Class A office towers, and world-class dining
- High foot traffic from nearby office workers, hotel guests, and visitors
- Dense daytime and nighttime population ensures consistent traffic.
- One of Miami's most walkable neighborhoods with year-round tourism
- Convenient access to I-95, Metrorail, and the Metromover



47,000+
Population



\$142,000+
Average Household Income



100,000+
Daytime Population



\$460M+
Annual Retail Spending





Business and hospitality drivers make Brickell one of the most active commercial and lifestyle hubs in South Florida.

Brickell is Miami's financial district, with some of the city's most prestigious Class A office towers, creating a dense weekday population with strong lunchtime, after-work, and convenience-driven demand for retail and services.



Brickell is home to several high-end hotels that attract business travelers, tourists, and event-goers — all potential retail and dining customers.



AVAILABLE FOR LEASE



Unique and Flexible Retail Opportunity **at** PANORAMA TOWER



P
A
N
O
R
A
M
A

Jake Freeman

631.745.2964

jake.freeman@colliers.com

Maggie Guajardo Kurtz

305.776.1442

maggie.kurtz@colliers.com

Kevin Gonzalez

305.896.3900

kevin.gonzalez@colliers.com

Jonathan Carter

305.215.4522

jonathan.carter@colliers.com

Ryan Brodsky

954.695.8376

ryan.brodsky@colliers.com

This document/email has been prepared by Colliers for advertising and general information only. Colliers makes no guarantees, representations or warranties of any kind, expressed or implied, regarding the information including, but not limited to, warranties of content, accuracy and reliability. Any interested party should undertake their own inquiries as to the accuracy of the information. Colliers excludes unequivocally all inferred or implied terms, conditions and warranties arising out of this document and excludes all liability for loss and damages arising there from. This publication is the copyrighted property of Colliers and /or its licensor(s). © 2026. All rights reserved. This communication is not intended to cause or induce breach of an existing listing agreement. Colliers International Florida, LLC.