

899 ELLIS STREET

FOR LEASE | HARD CORNER OFFICE BUILDING

TCP
TOUCHSTONE
COMMERCIAL PARTNERS



WWW.TCPRE.COM

ZACH HAUPERT zhaupert@tcpre.com
D 415.539.1121 | C 415.812.1219

MICHAEL SANBERG msanberg@tcpre.com
D 415.539.1103 | C 415.697.6088

899 ELLIS STREET

PROPERTY SUMMARY

ADDRESS

899 Ellis Street, San Francisco, CA 94109

AVAILABLE SPACE

Second Floor +/- 2,356 Square Feet

Ground Floor +/- 2,355 Square Feet

TOTAL +/- 4,711 Square Feet

**Floors Can Be Leased Together or Separately*

RENTAL RATE

Low \$30s / Square Foot / Year, Industrial Gross

AVAILABLE

Immediately

BUILDING ATTRIBUTES

- + One (1) Large Conference Room
- + Ten (10) Office or Meeting Rooms
- + Kitchenette & Break Area
- + Full HVAC
- + Three (3) Restrooms
- + Internal Staircases Connect All Floors
- + Exposed Brick & Hardwood Floor Throughout

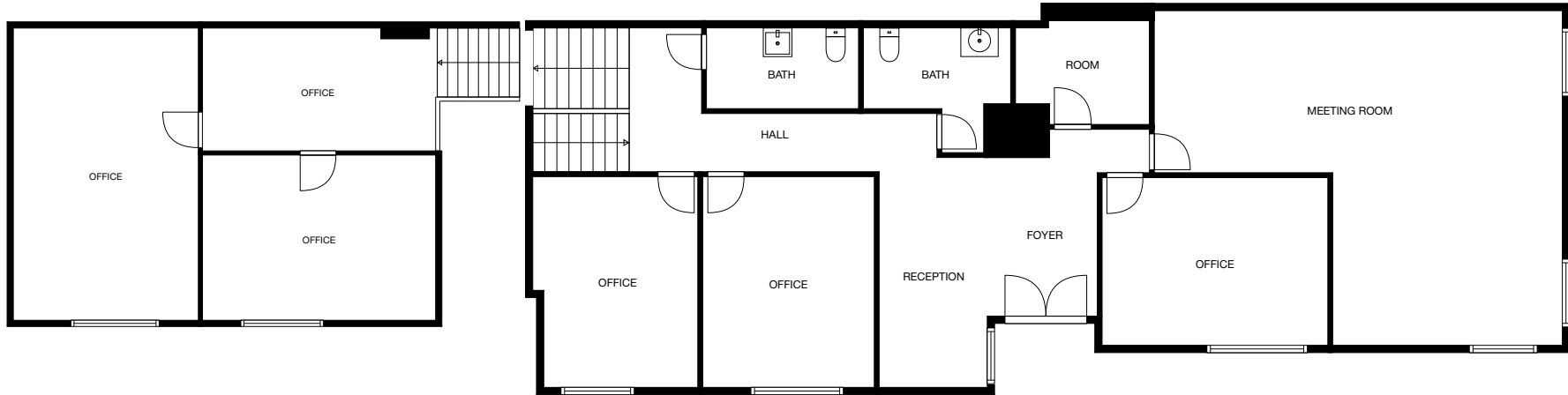


899 ELLIS STREET



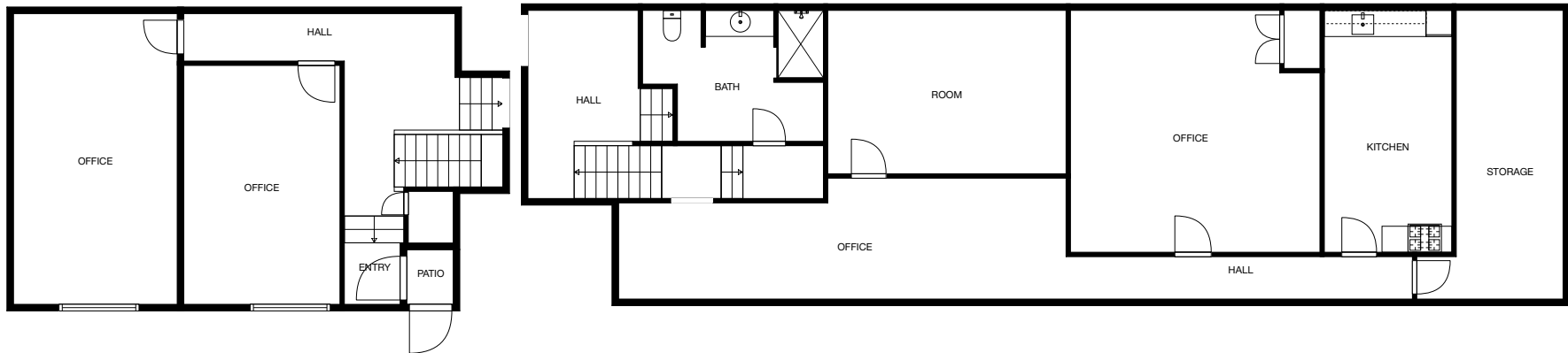
2ND FLOOR

+/- 2,356 Square Feet



GROUND FLOOR

+/- 2,355 Square Feet



899 ELLIS STREET

LOCATION OVERVIEW

Desirable Opera Plaza location, walkable to nearby amenities, public transportation and to surrounding neighborhoods.



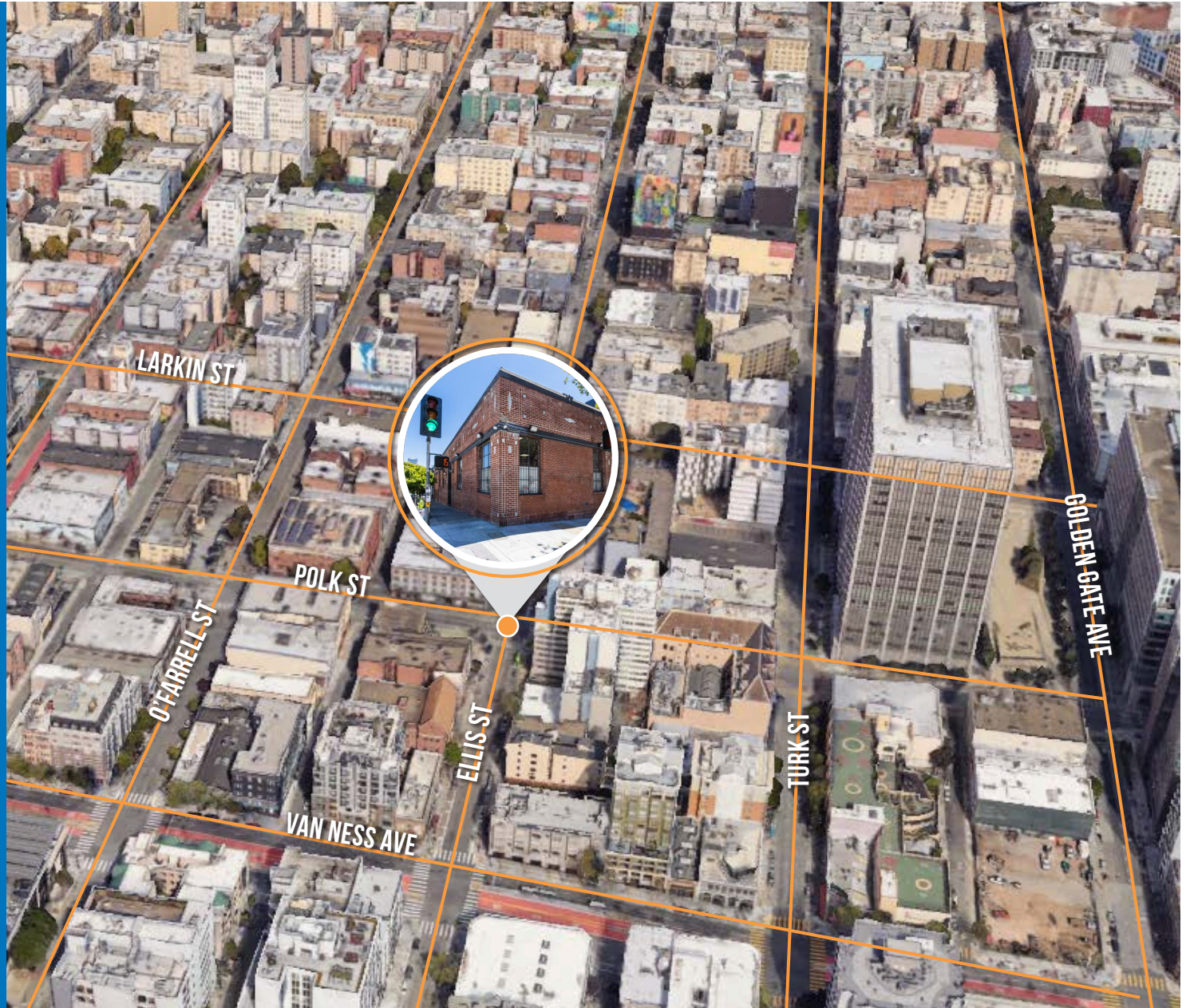
10 MIN to Civic Center BART
09 MIN to MUNI Market & 8th St Station



08 MIN to Financial District
09 MIN to SOMA
14 MIN to Mission District



06 MIN to I-80
07 MIN to I-280
08 MIN to US-101



899 ELLIS STREET

NEARBY AMENITIES

- 1.....CVS
- 2.....Hinata
- 3.....Opera Plaza Cinemas
- 4.....Peet's Coffee
- 5.....Max's Opera Cafe
- 6.....Brenda's French Soul Food
- 7.....Son and Garden
- 8.....Zen Yai
- 9.....City College of San Francisco
- 10.....Round Table Pizza
- 11.....MINI of San Francisco
- 12.....Music Exchange Piano Store
- 13.....Tesla
- 14.....Land Rover San Francisco
- 15.....Sutter Health - CPMC/PAMF
- 16.....Burger King
- 17.....Taco Bell
- 18.....Van Ness Market
- 19.....Salty's
- 20.....Books Inc.
- 21.....Emergency Dentist SF
- 22.....Unexpected Era Cafe
- 23.....Van Ness Cafe & Gyros
- 24.....Gladstone Market
- 25.....Metro by T-Mobile
- 26.....SF Federal Credit Union
- 27.....Sam's Bakery
- 28.....Bread & Butter Market & Deli
- 29.....Great American Music Hall
- 30.....Tobacco Barn



899 ELLIS STREET



899 ELLIS
STREET



TCP
TOUCHSTONE
COMMERCIAL PARTNERS

Corp. Lic. 01112906
www.tcpre.com

ZACH HAUPERT

D 415.539.1121 C 415.812.1219
zhaupert@tcpre.com DRE # 01822907

MICHAEL SANBERG

D 415.539.1103 C 415.697.6088
msanberg@tcpre.com DRE # 01930041

This document has been prepared by Touchstone Commercial Partners for advertising and general information only. Touchstone Commercial Partners makes no guarantees, representations or warranties of any kind, expressed or implied, regarding the information including, but not limited to, warranties of content, accuracy and reliability. Any interested party should undertake their own inquiries as to the accuracy of the information. Touchstone Commercial Partners excludes unequivocally all inferred or implied terms, conditions and warranties arising out of this document and excludes all liability for loss and damages arising there from. This publication is the copyrighted property of Touchstone Commercial Partners and/or its licensor(s). ©2025. All rights reserved.