

# Medical

2 Bennett Ave.  
4000sf



## FOR LEASE

**NaviTimes**  
Licensed Real Estate Brokers

Northern Manhattan Commercial Real Estate

## 2 Bennett Ave.

### Medical Professional Space

- 4,000 SF
- New Full Size 2500lbs Elevator
- Share floor with Article 28 Surgical Center
- 181st Street
- 14' Ceilings
- Floor to ceiling windows.
- Rent \$55 per RSF per annum.

For more information or for an immediate tour  
Please contact exclusive broker. Navahjo Stoller

**(212) 928-5050**

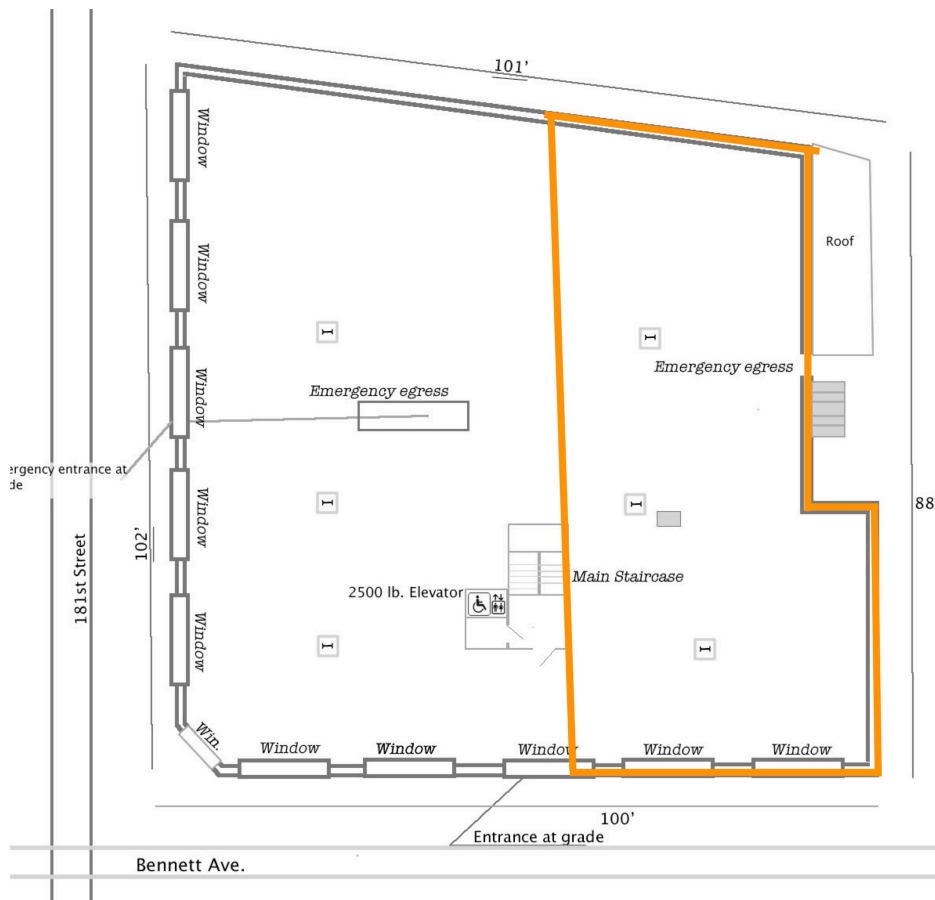
**navi@navitimes.com**

Positioned at the heart of Washington Heights, this top-floor **4,000 SF shell space** offers a rare opportunity to design a custom medical or professional environment in a highly accessible and established healthcare corridor.

The space features **two means of egress** and is serviced by a **new full-size elevator**, ensuring functionality and compliance for a wide range of medical uses. Located directly adjacent to a surgical center, the property benefits from built-in synergy with surrounding healthcare providers.

Conveniently situated at **181st Street and Bennett Avenue**, the location provides immediate access to the A Train express service, the 1 Train, the George Washington Bridge Bus Terminal, and multiple MTA bus lines—making it easily accessible for both patients and staff.

## NAVI'S SNAPSHOT™



Space is being rented as-is and all measurements even-though deemed reliable are approximate and shall be treated as such. All prospects are responsible for their own due diligence.

### DISCLAIMER

Copyright © 2003–2025 Navi Times CRE, Inc. All rights reserved.

All data referenced in this report is sourced from government agencies. No independent verification or validation of the data has been performed.

No representation is made regarding the accuracy, completeness, or reliability of the information contained herein.

This report should not be relied upon for investment decisions. For authoritative and up-to-date information, consult the original government sources from which the data was obtained.