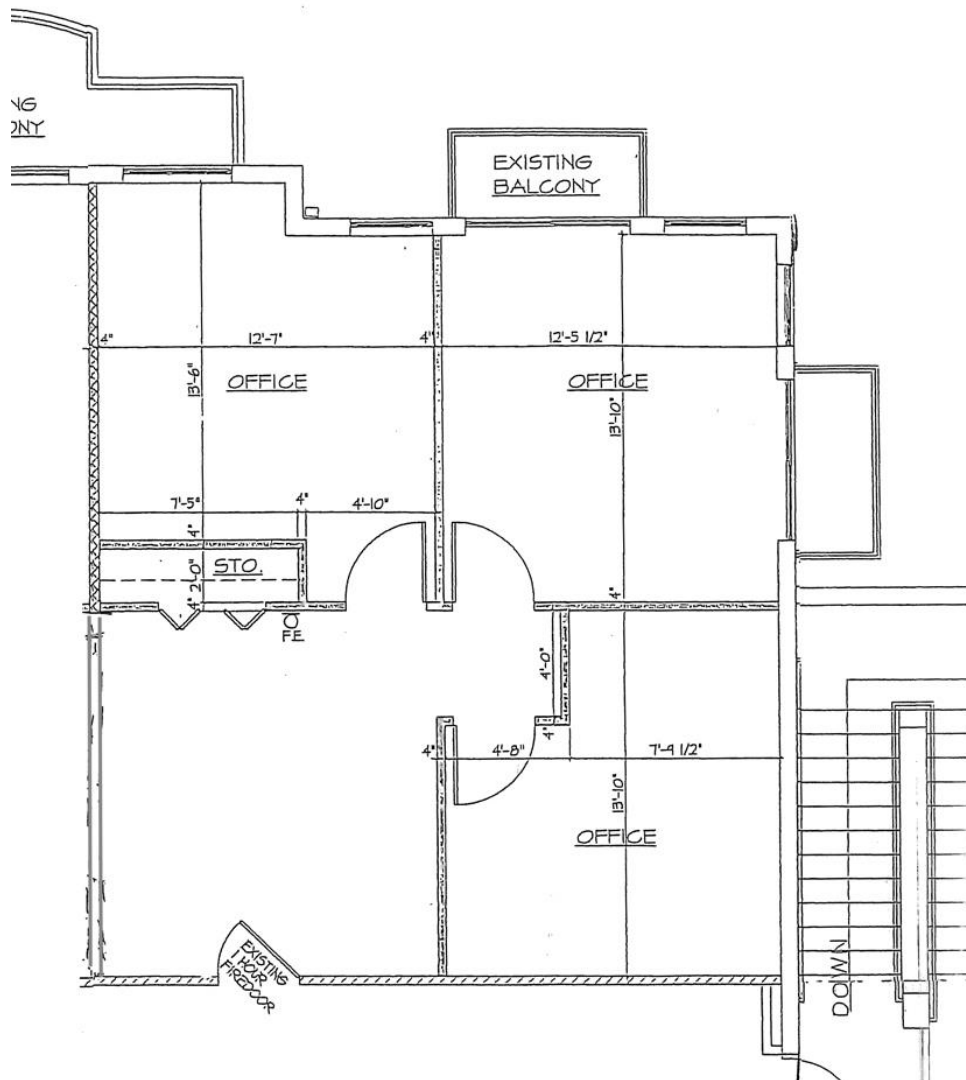




PGA COMMONS

4540 PGA Boulevard
Palm Beach Gardens, FL 33418

Suite 208
954 RSF



Contact Information:

Seth Spiegel, Vice President of Leasing

seth@channingcorporation.com

Channing Corporation

5100 PGA Boulevard, Suite 209

Palm Beach Gardens, FL 33418

561.630.8630