

FOR LEASE

ARROWHEAD COMMERCE CENTER

5768 - 5772 Arrowhead Drive | Virginia Beach, VA 23462



S.L. NUSBAUM
REALTY CO.



PIERCE JACOBSON
Partner | Shopping Center Leasing
O. 757.452.6141
pjacobson@slnusbaum.com

MICHAEL GOOD
Senior Associate
C. 757.646.0525
O. 757.640.2217
mgood@slnusbaum.com

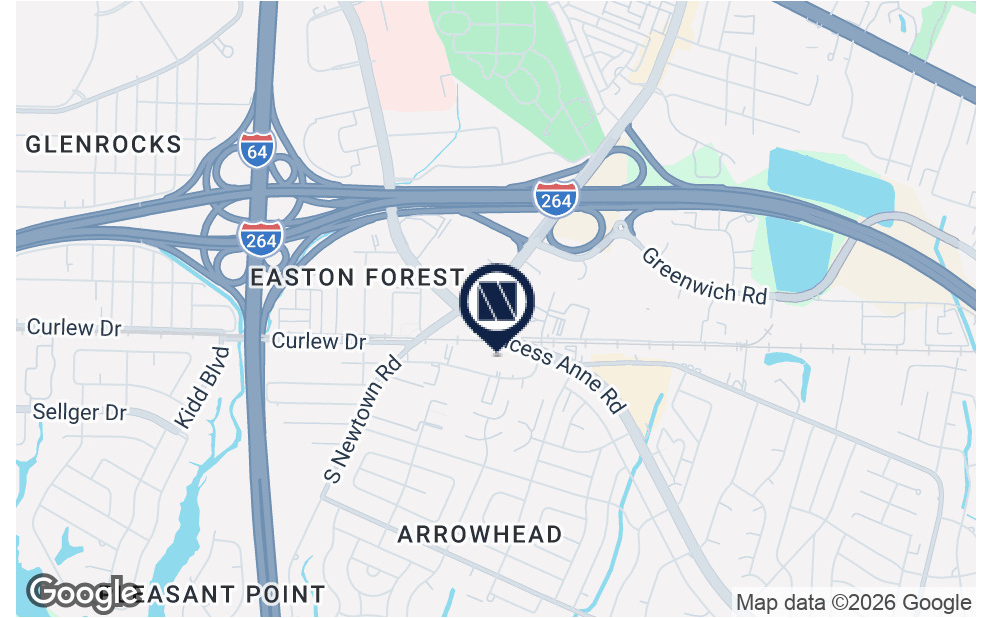
EXECUTIVE SUMMARY

ARROWHEAD COMMERCE CENTER

5768 - 5772 Arrowhead Drive | Virginia Beach, VA 23462



S.L. NUSBAUM
REALTY CO.



OFFERING SUMMARY

Lease Rate:	\$15 SF/yr (Modified Gross, net of utilities)
Building Size:	31,740 SF
Available SF:	1,800 - 3,000 SF
Zoning:	I-1 (Light Industrial District)

PROPERTY OVERVIEW

Arrowhead Commerce Center is a very ideal location for a user looking for a centrally located property with excellent interstate access. Monument and building signage are available.

PROPERTY HIGHLIGHTS

- Grade level doors
- 16' - 18' clear ceiling height

SPACES

LEASE RATE

SPACE SIZE

DATE AVAILABLE

5768 Arrowhead Drive, Suite B	\$15.00 SF/yr	1,800 SF	Immediately
5772 Arrowhead Drive, Suite C-2	\$15.00 SF/yr	3,000 SF	Within 60 days

PROPERTY DETAILS

ARROWHEAD COMMERCE CENTER

5768 - 5772 Arrowhead Drive | Virginia Beach, VA 23462



S.L. NUSBAUM
REALTY CO.

5768 ARROWHEAD DRIVE, SUITE B

- 1,800 square feet
- One (1) 12' x 14' grade level door
- One (1) restroom
- 16' clear ceiling height
- 1-phase, 150-amp electrical service
- 100% warehouse
- Warehouse has heat; No A/C

5772 ARROWHEAD DRIVE, SUITE C-2

- 3,000 square feet
- One (1) 12' x 14' grade level door
- 18' clear ceiling height
- Two (2) single-phase electric service panels
- LED lighting in warehouse
- Three (3) parking spaces
- 85% warehouse + 15% office on two floors
- Warehouse has heat and A/C



FLOOR PLANS

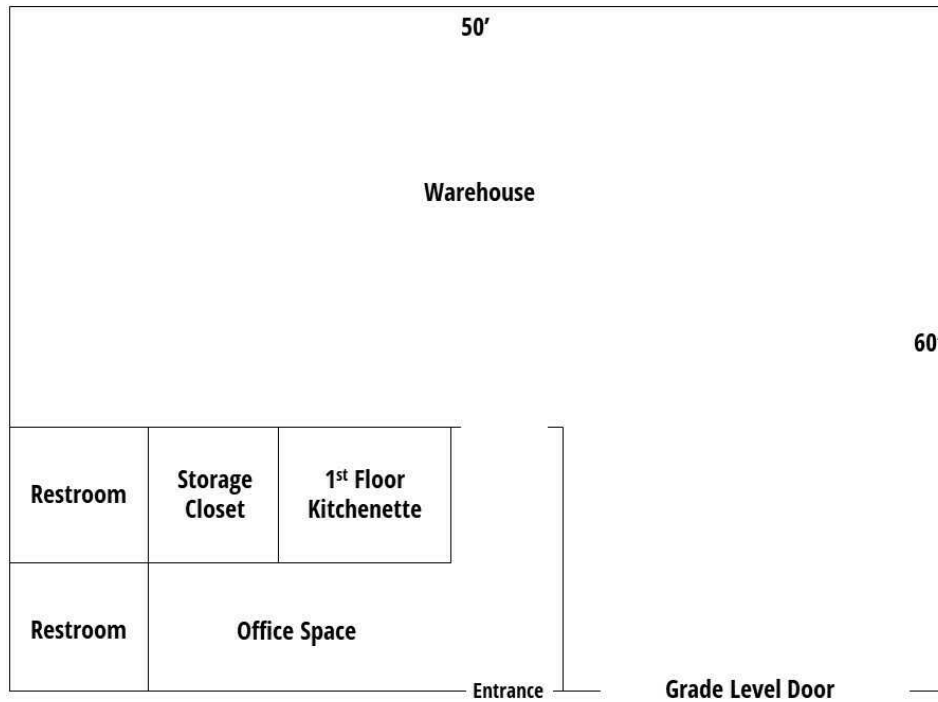
ARROWHEAD COMMERCE CENTER

5768 - 5772 Arrowhead Drive | Virginia Beach, VA 23462

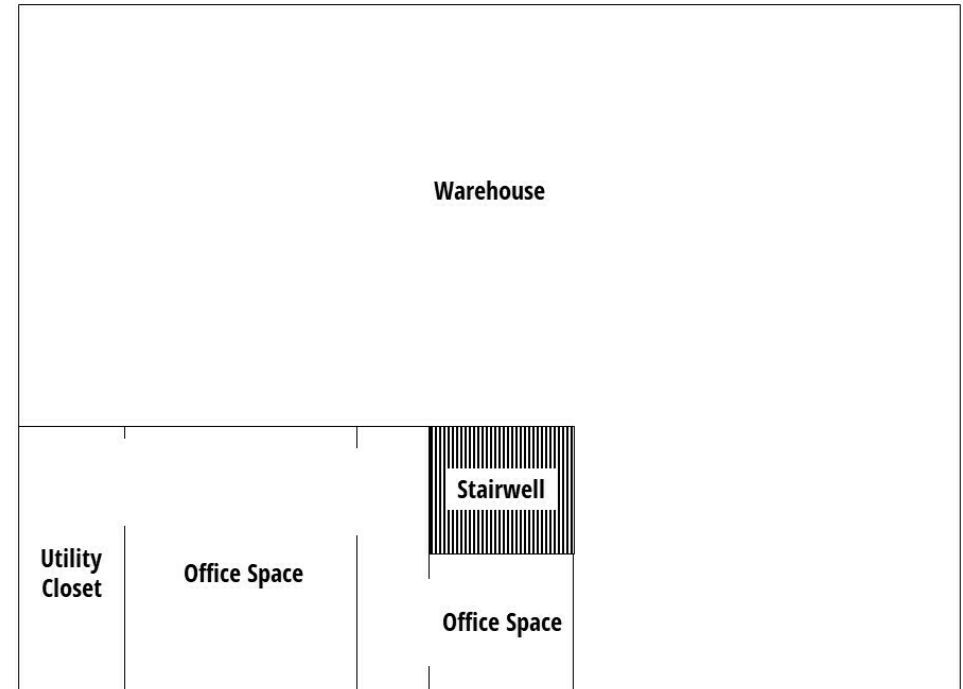


S.L. NUSBAUM
REALTY CO.

FIRST FLOOR



SECOND FLOOR



5772 ARROWHEAD DRIVE – SUITE C-2

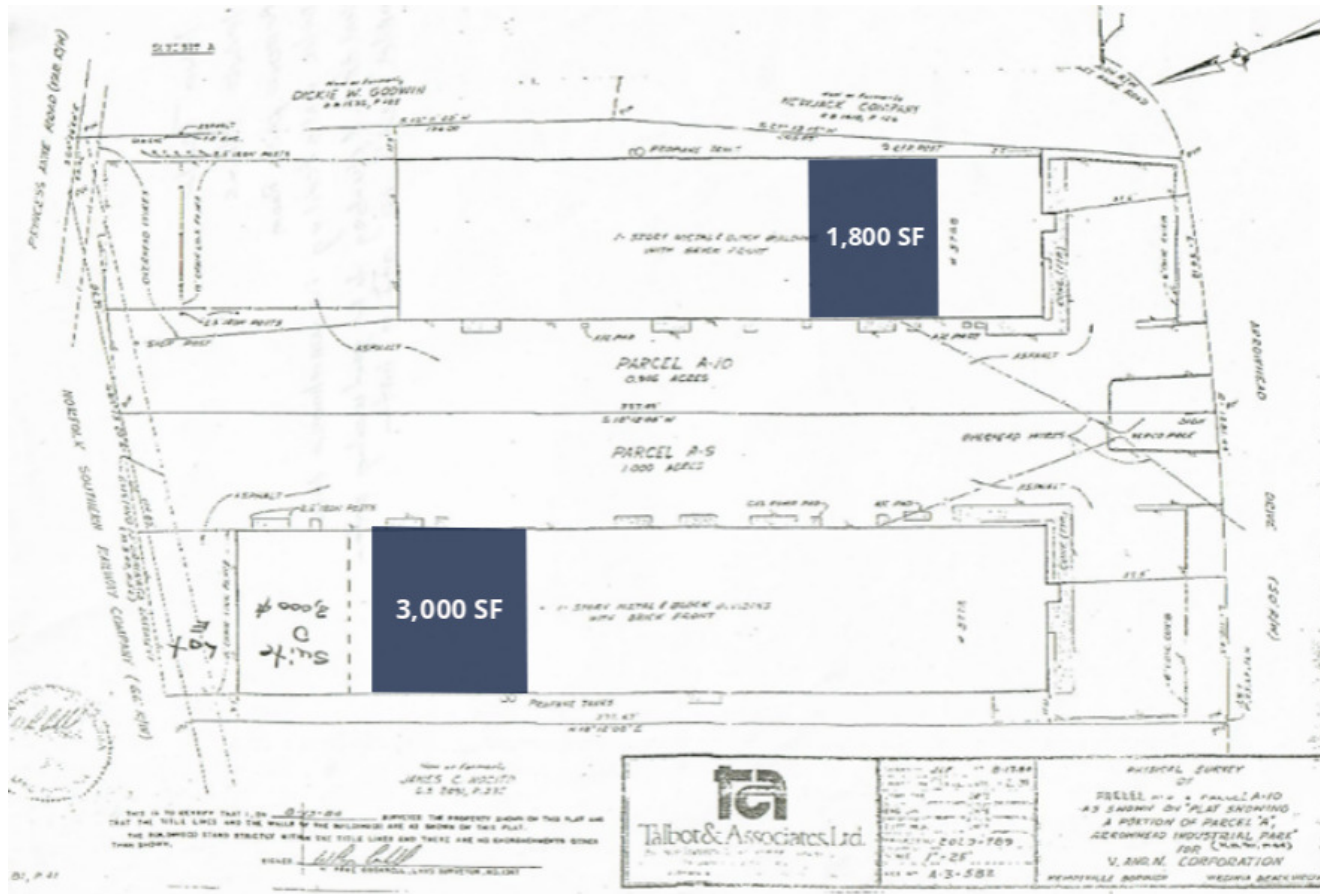
SURVEY

ARROWHEAD COMMERCE CENTER

5768 - 5772 Arrowhead Drive | Virginia Beach, VA 23462



S.L. NUSBAUM
REALTY CO.



LEASE INFORMATION

Lease Type:	Modified Gross, net of utilities	Lease Term:	Negotiable
Total Space:	1,800 - 3,000 SF	Lease Rate:	\$15 SF/yr

LOCATION MAP

ARROWHEAD COMMERCE CENTER

5768 - 5772 Arrowhead Drive | Virginia Beach, VA 23462



S.L. NUSBAUM
REALTY CO.



Map data ©2025 Google Imagery ©2025 Airbus, Maxar Technologies

DEMOGRAPHICS MAP & REPORT

ARROWHEAD COMMERCE CENTER

5768 - 5772 Arrowhead Drive | Virginia Beach, VA 23462

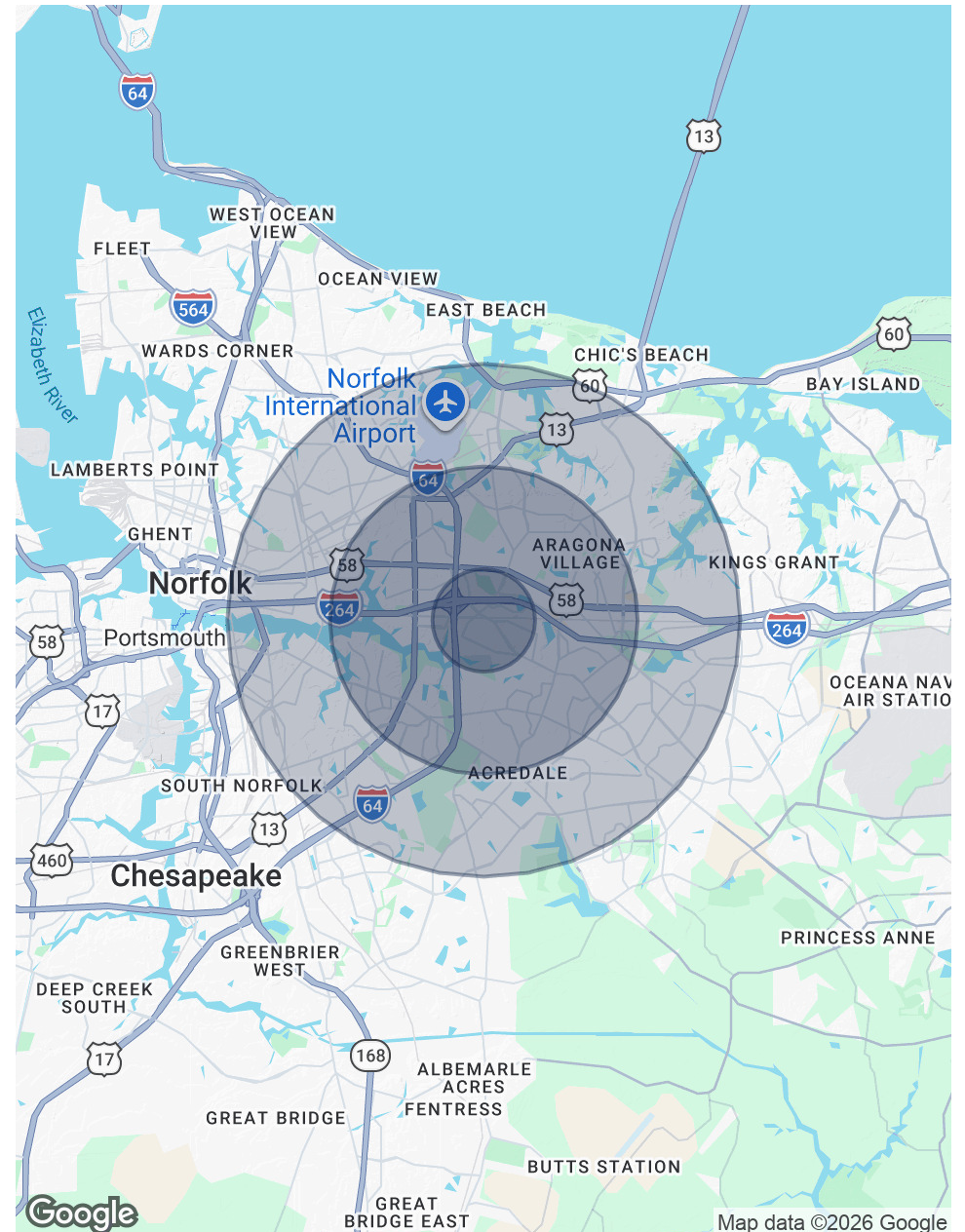


S.L. NUSBAUM
REALTY CO.

POPULATION	1 MILE	3 MILES	5 MILES
Total Population	8,668	107,639	308,361
Average Age	39.10	38.00	37.20
Average Age (Male)	31.4	33.2	33.7
Average Age (Female)	39.4	38.3	36.5

HOUSEHOLDS & INCOME	1 MILE	3 MILES	5 MILES
Total Households	3,122	41,599	116,519
# Of Persons Per HH	2.7	2.5	2.6
Average HH Income	\$79,080	\$79,739	\$79,921
Average House Value	\$239,282	\$236,913	\$238,670

2020 American Community Survey (ACS)



CONTACT INFORMATION

ARROWHEAD COMMERCE CENTER
5768 - 5772 Arrowhead Drive | Virginia Beach, VA 23462



S.L. NUSBAUM
REALTY CO.

PIERCE JACOBSON

Partner | Shopping Center

Leasing

O. 757.452.6141

pjacobson@slnusbaum.com

MICHAEL GOOD

Senior Associate

O. 757.640.2217

C. 757.646.0525

mgood@slnusbaum.com



COMMITMENT. INTEGRITY. EXCELLENCE. SINCE 1906.

Serving the Southeast and Mid-Atlantic region for well over a century, S.L. Nusbaum Realty Co. continues to provide a comprehensive experience for our clients and customers in all aspects of the multifamily and commercial real estate industry.

[CLICK HERE TO LEARN MORE](#)

DISCLAIMER:

No warranty or representation, expressed or implied, is made to the accuracy or completeness of the information contained herein, and same is submitted subject to errors, omissions, change of price, rental or other conditions, withdrawal without notice, and to any special listing conditions imposed by the property owner(s). As applicable, we make no representation as to the condition of the property (or properties) in question or the property's (or properties') compliance with applicable laws, regulations, and codes.